

- NOTES:**
- REFER TO SPECIFICATION E# BARRIER CURB AND REVERSED GUTTER FOR ASPHALT PAVEMENT OF THE TENDER DOCUMENT
 - TRANSVERSE JOINT SAW CUT EVERY 3.0m TO A MAXIMUM DEPTH OF 25mm

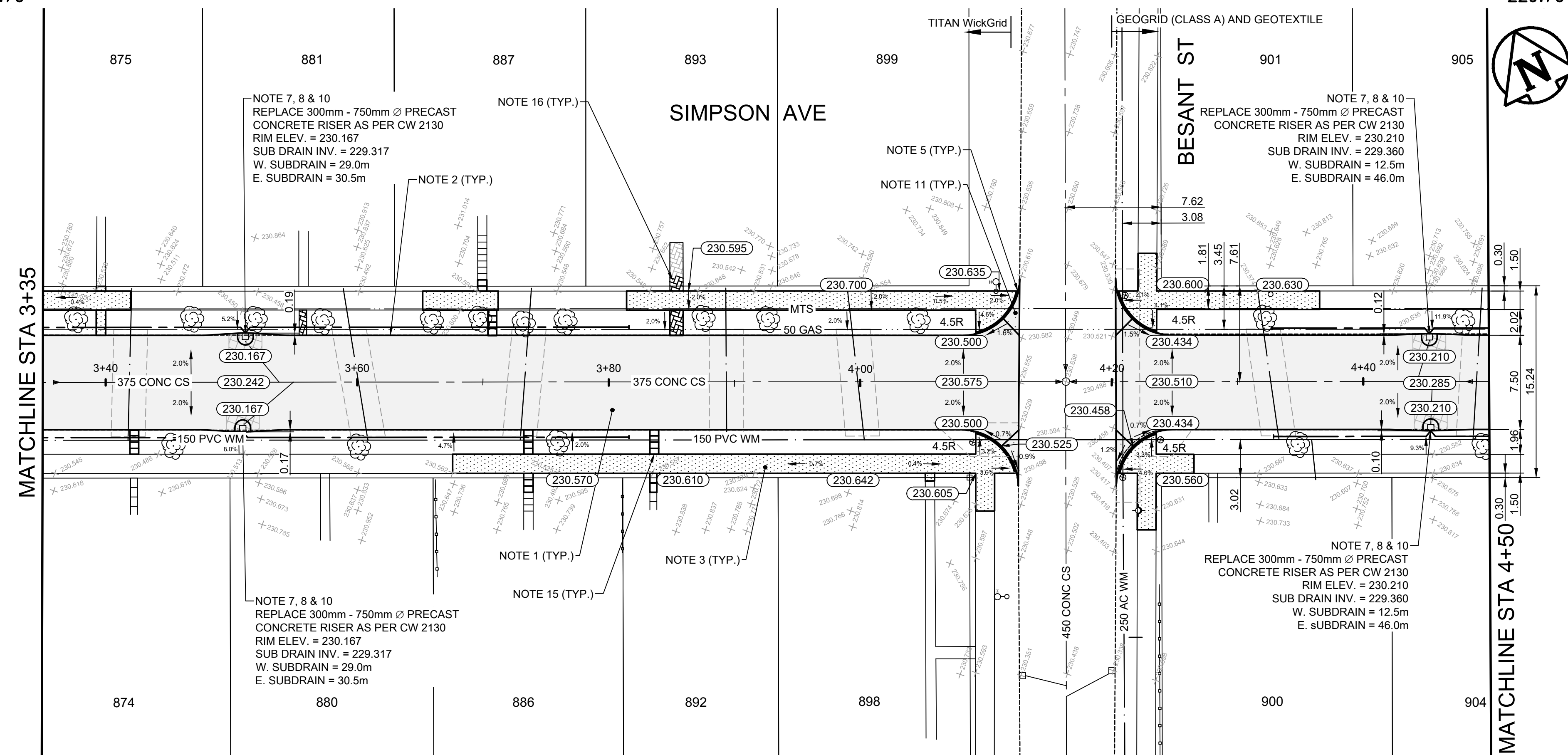
TABLE A - GEOSYNTHETICS/ GEOTEXTILE MATERIAL

TYPE	START (STA.)	END (STA.)
MIRAFI H2RI	STA. 1+00	STA. 1+88
TerrTex® DriBase	STA. 1+88	STA. 2+93
TITAN WickGrid	STA. 2+93	STA. 4+12
GEOTEX (CLASS A) AND GEOTEXTILE SEPARATION/FILTRATION	STA. 4+20	STA. 6+75
GEOTEX (CLASS A) NO GEOTEXTILE SEPARATION/FILTRATION	STA. 6+75	STA. 7+29.3

NOTE: SEE E23 AND APPENDIX 'E' OF THE TENDER DOCUMENT FOR INSTALLATION SPECIFICATIONS

- CONSTRUCTION NOTES**
- REMOVE EXISTING PAVEMENT AND CONSTRUCT NEW 115mm ASPHALT PAVEMENT
 - CONSTRUCT NEW CONCRETE CURB AND REVERSED GUTTER FOR ASPHALT PAVEMENT (SD-200AA, E19)
 - RENEW EXISTING CONCRETE SIDEWALK (SD-228A)
 - INSTALL NEW DETECTABLE WARNING SURFACE TILE (SD-229E)
 - CONSTRUCT NEW CURB RAMP (SD-229F, E19)
 - INSTALL NEW FRAME AND SOLID COVER (AP-006, AP-007) AND ADJUST TO GRADE
 - INSTALL NEW CURB AND GUTTER INLET FRAME AND COVER (E24) AND ADJUST TO GRADE
 - INSTALL 150mm Ø SUB DRAINS (BOTH SIDES), CONNECT TO CATCH BASIN (SD-245) AND CAP ENDS AS PER CW 3120
 - MILL EXISTING ASPHALT AND OVERLAY WITH NEW TYPE MS1 ASPHALT
 - CONSTRUCT MIN. 150mm CONCRETE ISOLATION AND INSTALL TYPE B PAVEMENT REPAIR FABRIC (SD-220D, E11)
 - CONSTRUCT 150mm REINFORCED CONCRETE PAVEMENT
 - LIMIT OF RECONSTRUCTION
 - REMOVE EXISTING APPROACH AND CONSTRUCT NEW 150mm REINFORCED CONCRETE APPROACH WITH 75mm LIP CURB WITH INTEGRAL APPROACH FOR ASPHALT PAVEMENT (SD-202CA, SD-235, E19)
 - LIGHT STANDARD TO BE RELOCATED BY OTHERS
 - RE-GRADE EXISTING PRECAST SIDEWALK BLOCKS
 - RE-GRADE EXISTING PAVING STONES
 - CONSTRUCT 1.0m CURB CUT WITH 25mm REVEAL

- GENERAL NOTES**
- PAVEMENT DIMENSIONS ARE TO BACK OF CURB
 - ALL CURB RADI UNDER 15.0m SHALL BE MODIFIED (SD-203C, E19)
 - CURB REPLACEMENT AS DIRECTED BY CONTRACT ADMINISTRATOR
 - CONTRACTOR TO CONFIRM THE LOCATION OF ALL UTILITIES/SERVICES IN THE FIELD PRIOR TO CONSTRUCTION
 - ADJUST ALL EXISTING WATER VALVES AND CURB STOPS TO GRADE
 - PAVEMENT REPAIRS SHOWN ARE A REPRESENTATIVE SAMPLE OF THE TENDER QUANTITIES
 - ALL WATER SERVICES WITHIN THE LIMITS OF THE RECONSTRUCTION SHALL BE INSULATED AS PER SD-018



EXISTING	LEGEND - PLAN	PROPOSED	EXISTING	LEGEND - PLAN	PROPOSED	EXISTING	LEGEND - PROFILE	PROPOSED
⊕	HYDRANT	⊕	---	LDS/WWS	---	▭	CONCRETE	▭
⊗	VALVE	⊗	---	WATERMAIN	---	▨	CONCRETE SIDEWALK	▨
⊙	CURB STOP	⊙	---	GAS	---	▩	ASPHALT	▩
○	MANHOLE	●	---	TRAFFIC SIGNALS	---	▧	PAVING STONES	▧
□	CATCH BASIN	■	---	HYDRO/STREET LIGHT	---	▦	PAVEMENT REPAIR FABRIC	▦
△	CATCH PIT/CURB INLET	▲	---	MTS/SHAW	---	▤	WATER SERVICE INSULATION	▤
○	HYDRO POLE	●	---	CURB RENEWAL	---	▥	SUB DRAINS	▥
○	LIGHT STANDARD	●	---	PROPERTY LINE	---	---	NORTH GUTTER	---
○	TRAFFIC SIGNAL POLE	●	---	RAMP CURB	---	---	CENTER LINE	---
+	SURVEY BAR	+	---	ELEVATIONS	(231.000)	---	SOUTH GUTTER	---
⊕	GEODETIC BENCH MARK	⊕	---	TREE	---	---		---

LOCATION APPROVED UNDERGROUND STRUCTURES

DATE: _____

NOTE: LOCATION OF UNDERGROUND STRUCTURES AS SHOWN ARE BASED ON THE BEST INFORMATION AVAILABLE. BUT NO GUARANTEE IS GIVEN THAT ALL EXISTING UTILITIES ARE SHOWN OR THAT THE GIVEN LOCATIONS ARE EXACT. CONFIRMATION OF EXISTENCE AND EXACT LOCATION OF ALL SERVICES MUST BE OBTAINED FROM THE INDIVIDUAL UTILITIES BEFORE PROCEEDING WITH CONSTRUCTION.

B.M. ELEV. 230.598

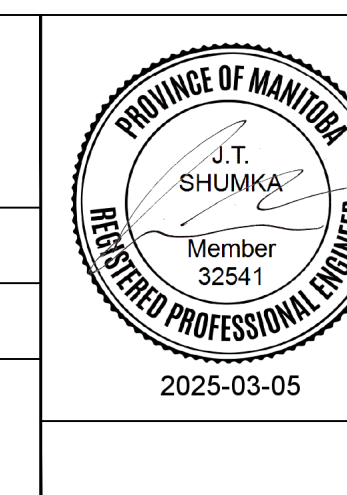
IB @ S.W. CORNER BESANT & SIMPSON

ENGINEERING DIVISION
TECHNOLOGY SERVICES BRANCH
106 - 1155 PACIFIC AVE

DESIGNED BY V.S. CHECKED BY G.K., R.W.
DRAWN BY V.S. APPROVED BY J.T.S.

HOR. SCALE: 1 : 250
VERTICAL: 1 : 10

DATE: 2025/03/05



METRIC
WHOLE NUMBERS INDICATE MILLIMETERS
DECIMALIZED NUMBERS INDICATE METERS

ISSUED FOR TENDER
NOT TO BE USED FOR CONSTRUCTION

TENDER NO. 11-2025

THE CITY OF WINNIPEG
PUBLIC WORKS DEPARTMENT

SIMPSON AVENUE
FROM LONDON ST TO LOUELDA ST
ASPHALT RECONSTRUCTION AND ASSOCIATED WORKS
FROM STA. 3+35 TO STA. 4+50

CITY DRAWING NUMBER SE-25-419
SHEET 20 OF 23

3