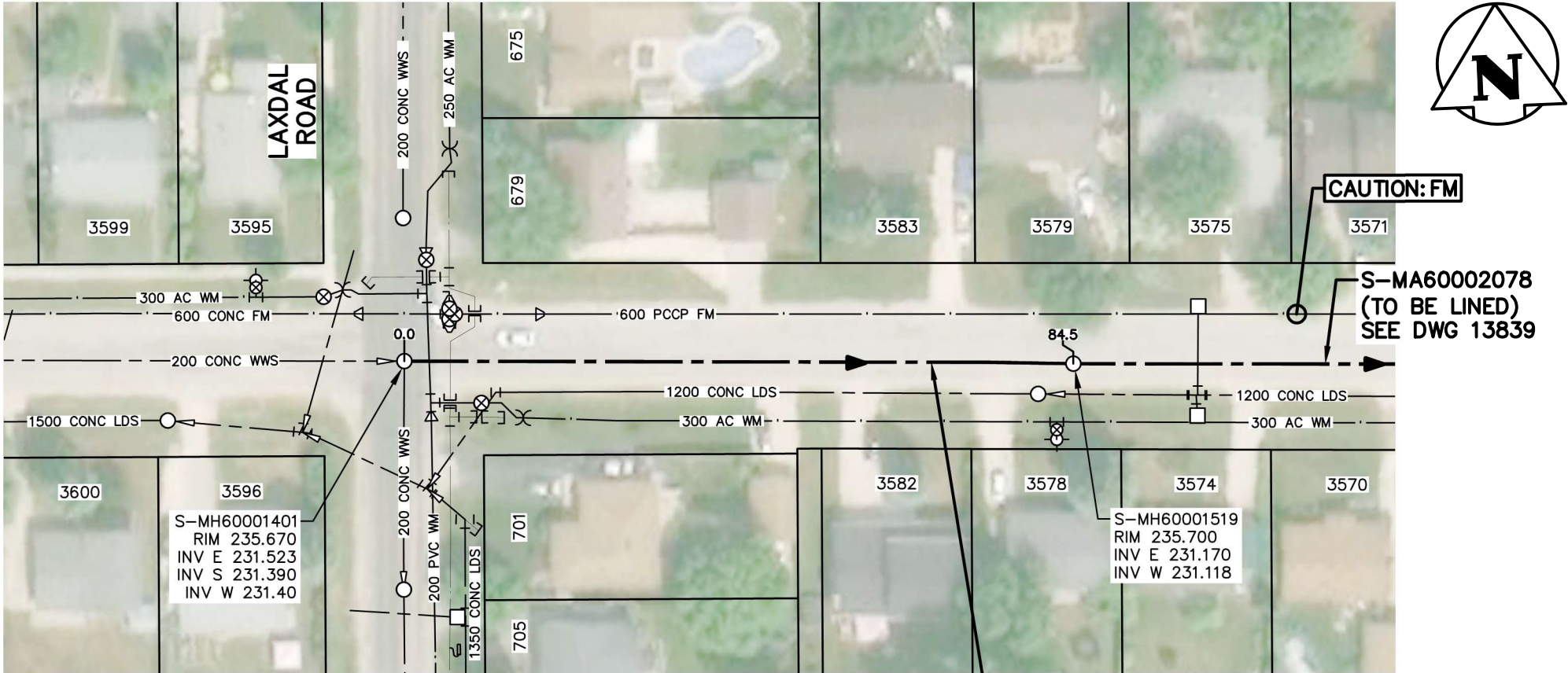


ELDRIDGE AVENUE



CAUTION: FM

S-MA60002078
(TO BE LINED)
SEE DWG 13839

84.5 OF 250 CONC WWS TO
BE LINED S-MA60001920
(FULLY DETERIORATED)

SEWER JUNCTION INFORMATION FROM SEWER VIDEO INSPECTION		
SEWER ID S-MA60001920		
DISTANCE FROM S-MH60001401		
DISTANCE	DIAMETER	CLOCK
61.5	150	2:00
63.2	150	2:00
64.7	150	10:00
77.6	150	2:00
79.8	150	11:00

WARNING

IF POWER EQUIPMENT OR EXPLOSIVES ARE TO BE USED FOR EXCAVATION ON THIS PROJECT THE CONTRACTOR MUST:
1) NOTIFY THE GAS COMPANY OF THE PROPOSED LOCATION OF EXCAVATION.
2) TAKE PRECAUTION TO AVOID DAMAGE TO GAS COMPANY INSTALLATIONS.
SEE PROVINCIAL REGULATION 140/92 FOR DETAILS



Certificate of Authorization
Stantec Consulting Ltd.
No. 1301

FOR INDEX SEE
13826

TENDER NO. 1137-2025



METRIC

WHOLE NUMBERS INDICATE MILLIMETRES
DECIMALIZED NUMBERS INDICATE METRES

LOCATION APPROVED
UNDERGROUND STRUCTURES

SUPV. U/G STRUCTURES _____ DATE _____
COMMITTEE

NOTE:
LOCATION OF UNDERGROUND STRUCTURES AS SHOWN ARE BASED ON THE BEST INFORMATION AVAILABLE BUT NO GUARANTEE IS GIVEN THAT ALL EXISTING UTILITIES ARE SHOWN OR THAT THE GIVEN LOCATIONS ARE EXACT. CONFIRMATION OF EXISTENCE AND EXACT LOCATION OF ALL SERVICES MUST BE OBTAINED FROM THE INDIVIDUAL UTILITIES BEFORE PROCEEDING WITH CONSTRUCTION.

B.M. ELEV.			
0	ISSUED FOR CONSTRUCTION	26.03.04	NK
NO.	REVISIONS	DATE	BY



Stantec

311 Portage Avenue, Winnipeg, Manitoba
Tel 204-489-5900 Fax 204-453-9012

DESIGNED BY	NK	CHECKED BY	RS
DRAWN BY	MR	APPROVED BY	NK
HOR. SCALE:	1:750	RELEASED FOR CONSTRUCTION:	S. COURNOYER, P. ENG.
VERTICAL:		DATE	26.03.03
DATE	26.02.13		

ENGINEER'S SEAL



CONSULTANT DRAWING NO.
C-II2



THE CITY OF WINNIPEG
WATER AND WASTE DEPARTMENT

2025 SEWER MAIN RENEWALS BY CIPP LINING
CONTRACT 4
ELDRIDGE AVENUE
MH AT LAXDAL ROAD TO
1ST MH E OF LAXDAL ROAD

SHEET	OF
14	48
CAD FILE DRAWING NUMBER 20976c-109-116.dwg	
CITY DRAWING NUMBER 13838	