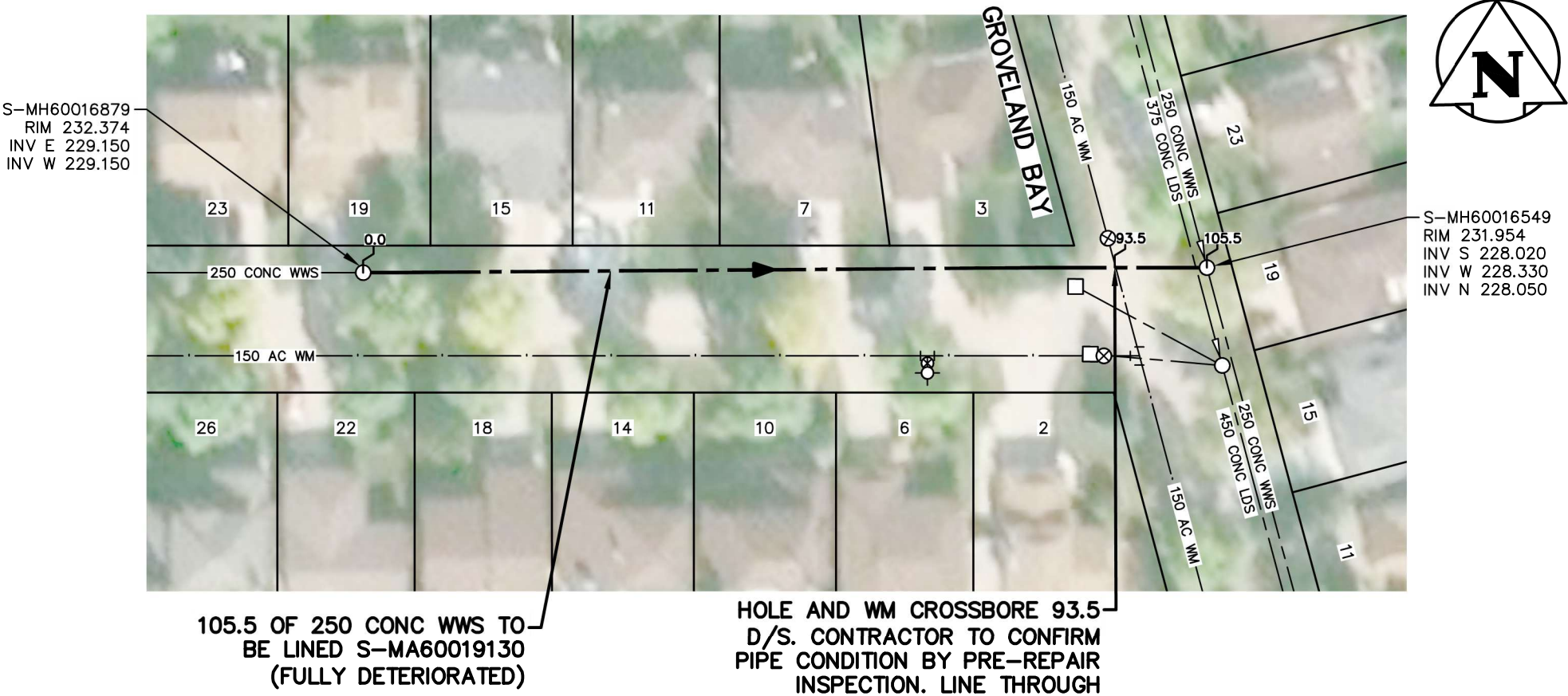


HAZEL PARK DRIVE (N LEG)



SEWER JUNCTION INFORMATION FROM SEWER VIDEO INSPECTION		
SEWER ID S-MA60019130		
DISTANCE FROM S-MH60016879		
DISTANCE	DIAMETER	CLOCK
1.0	150	10:00
18.4	150	10:00
19.1	150	2:00
37.7	150	2:00
38.2	150	10:00
54.8	150	10:00
55.9	150	2:00
68.4	150	2:00
76.5	150	10:00
85.0	150	2:00

WARNING

IF POWER EQUIPMENT OR EXPLOSIVES ARE TO BE USED FOR EXCAVATION ON THIS PROJECT THE CONTRACTOR MUST:
1) NOTIFY THE GAS COMPANY OF THE PROPOSED LOCATION OF EXCAVATION.
2) TAKE PRECAUTION TO AVOID DAMAGE TO GAS COMPANY INSTALLATIONS.
SEE PROVINCIAL REGULATION 140/92 FOR DETAILS

**ENGINEERS
GEOSCIENTISTS
MANITOBA**

Certificate of Authorization
Stantec Consulting Ltd.
No. 1301

FOR INDEX SEE
13826

TENDER NO. 1137-2025



METRIC

WHOLE NUMBERS INDICATE MILLIMETRES
DECIMALIZED NUMBERS INDICATE METRES

LOCATION APPROVED
UNDERGROUND STRUCTURES

SUPV. U/G STRUCTURES COMMITTEE DATE

NOTE:
LOCATION OF UNDERGROUND STRUCTURES AS SHOWN ARE BASED ON THE BEST INFORMATION AVAILABLE BUT NO GUARANTEE IS GIVEN THAT ALL EXISTING UTILITIES ARE SHOWN OR THAT THE GIVEN LOCATIONS ARE EXACT. CONFIRMATION OF EXISTENCE AND EXACT LOCATION OF ALL SERVICES MUST BE OBTAINED FROM THE INDIVIDUAL UTILITIES BEFORE PROCEEDING WITH CONSTRUCTION.

B.M. ELEV.			
0	ISSUED FOR CONSTRUCTION	26.03.04	NK
NO.	REVISIONS	DATE	BY

**Stantec**


311 Portage Avenue, Winnipeg, Manitoba
Tel 204-489-5900 Fax 204-453-9012

DESIGNED BY	NK	CHECKED BY	RS
DRAWN BY	MR	APPROVED BY	NK
HOR. SCALE:	1:750	RELEASED FOR CONSTRUCTION:	S. COURNOYER, P. ENG.
VERTICAL:		DATE	26.03.03
DATE	26.02.13		

ENGINEER'S SEAL



CONSULTANT DRAWING NO.
C-IIB

**THE CITY OF WINNIPEG**
WATER AND WASTE DEPARTMENT

2025 SEWER MAIN RENEWALS BY CIPP LINING
CONTRACT 4
HAZEL PARK DRIVE (N LEG)
IST MH W OF GROVELAND BAY (E LEG) TO
MH AT GROVELAND BAY (E LEG)

SHEET OF
20 48
CAD FILE DRAWING NUMBER
20976c-117-124.dwg
CITY DRAWING NUMBER
13844