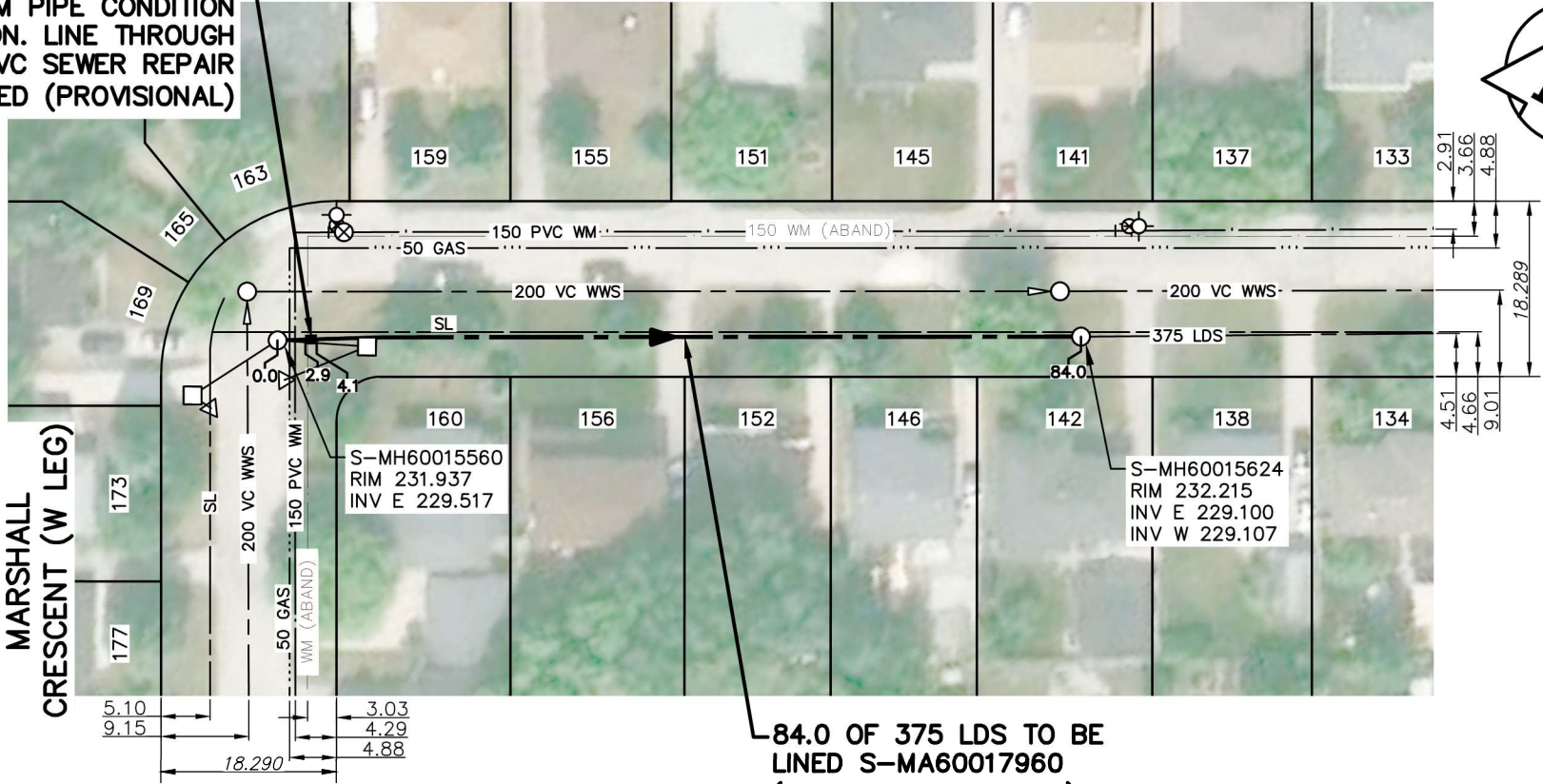


MARSHALL CRESCENT (N LEG)

HOLE W/ INTRUDING PIPE DEBRIS 3.1 D/S
CONTRACTOR TO CONFIRM PIPE CONDITION
BY PRE-REPAIR INSPECTION. LINE THROUGH
IF POSSIBLE. 1.2 OF 375 PVC SEWER REPAIR
(SD-022A) IF REQUIRED (PROVISIONAL)



84.0 OF 375 LDS TO BE
LINED S-MA60017960
(FULLY DETERIORATED)

SEWER JUNCTION INFORMATION FROM SEWER VIDEO INSPECTION		
SEWER ID S-MA60017960		
DISTANCE FROM S-MH60015560		
DISTANCE	DIAMETER	CLOCK
NO SERVICE JUNCTIONS		

WARNING

IF POWER EQUIPMENT OR EXPLOSIVES ARE TO BE USED
FOR EXCAVATION ON THIS PROJECT THE CONTRACTOR
MUST:
1) NOTIFY THE GAS COMPANY OF THE PROPOSED LOCATION
OF EXCAVATION.
2) TAKE PRECAUTION TO AVOID DAMAGE TO GAS COMPANY
INSTALLATIONS.
SEE PROVINCIAL REGULATION 140/92 FOR DETAILS

**ENGINEERS
GEOSCIENTISTS
MANITOBA**

Certificate of Authorization
Stantec Consulting Ltd.
No. 1301

FOR INDEX SEE
13826
TENDER NO. 1137-2025



METRIC

WHOLE NUMBERS INDICATE MILLIMETRES
DECIMALIZED NUMBERS INDICATE METRES

LOCATION APPROVED
UNDERGROUND STRUCTURES

SUPV. U/G STRUCTURES DATE
COMMITTEE

NOTE:
LOCATION OF UNDERGROUND STRUCTURES AS
SHOWN ARE BASED ON THE BEST INFORMATION
AVAILABLE BUT NO GUARANTEE IS GIVEN
THAT ALL EXISTING UTILITIES ARE SHOWN OR
THAT THE GIVEN LOCATIONS ARE EXACT.
CONFIRMATION OF EXISTENCE AND EXACT
LOCATION OF ALL SERVICES MUST BE
OBTAINED FROM THE INDIVIDUAL UTILITIES
BEFORE PROCEEDING WITH CONSTRUCTION.

B.M. ELEV.			
0	ISSUED FOR CONSTRUCTION	26.03.04	NK
NO.	REVISIONS	DATE	BY

**Stantec**

311 Portage Avenue, Winnipeg, Manitoba
Tel 204-489-5900 Fax 204-453-9012

DESIGNED BY	NK	CHECKED BY	RS
DRAWN BY	MR	APPROVED BY	NK
HOR. SCALE:	1:750	RELEASED FOR CONSTRUCTION:	S. COURNOYER, P. ENG.
VERTICAL:		DATE	26.03.03
DATE	26.02.13		

ENGINEER'S SEAL

2026-03-05

CONSULTANT DRAWING NO.
C-131

**THE CITY OF WINNIPEG**
WATER AND WASTE DEPARTMENT

2025 SEWER MAIN RENEWALS BY CIPP LINING CONTRACT 4		SHEET OF 33 48
MARSHALL CRESCENT (N LEG)		CAD FILE DRAWING NUMBER 20976c-125-131.dwg
MH AT MARSHALL CRESCENT (W LEG) TO 1ST MH E OF MARSHALL CRESCENT (W LEG)		CITY DRAWING NUMBER 13857