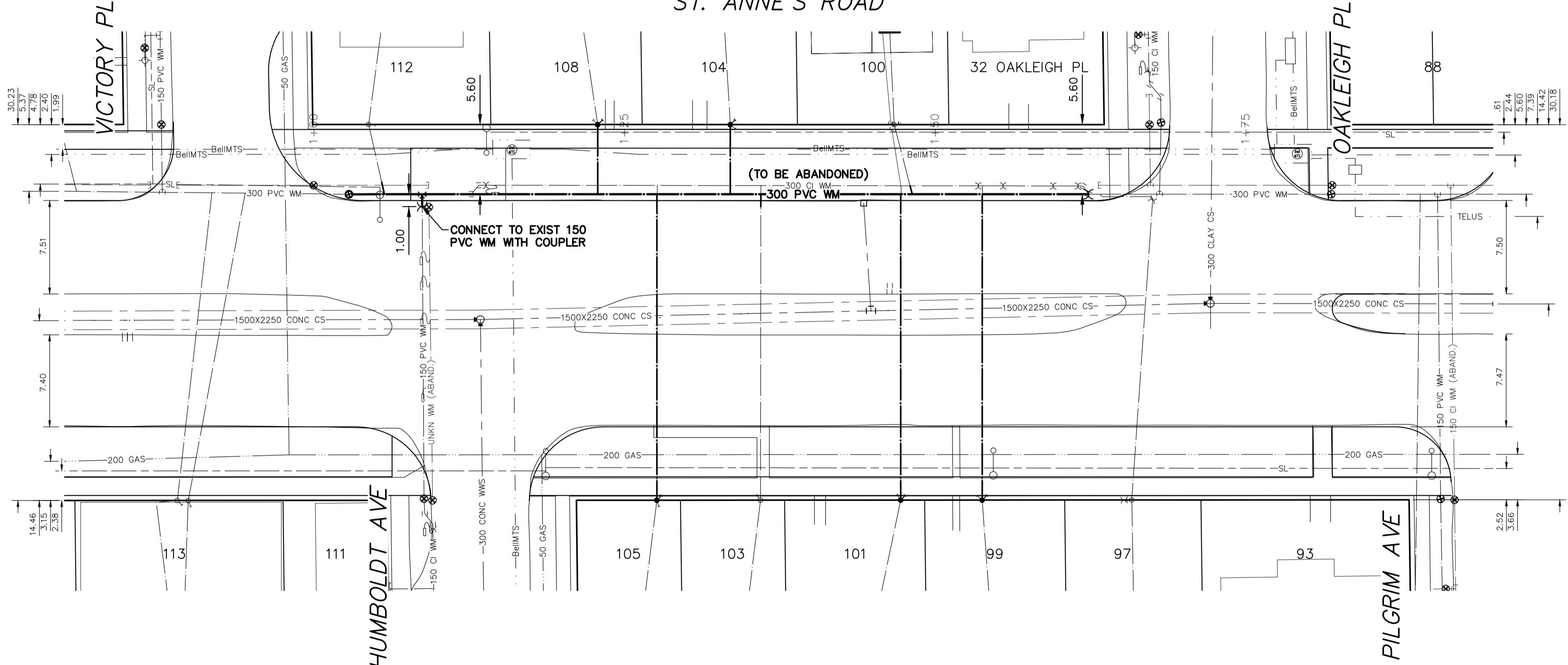


NOTE: CHAINAGES SHOWN ARE ALONG W.P. OF ST. ANNE'S RD



ST. ANNE'S ROAD



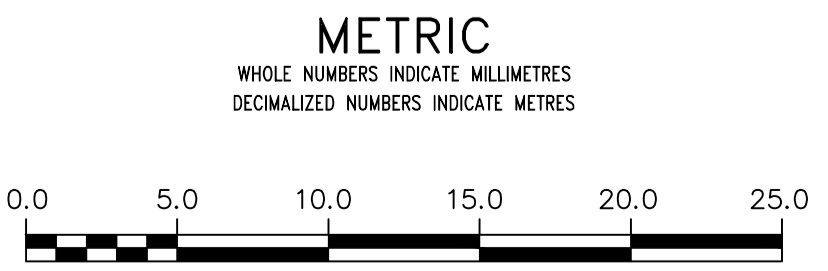
WATER SERVICE INFORMATION

ADDRESS	SIZE (mm) MATERIAL (STREET)	SIZE (mm) MATERIAL (PROP.)	SHORT & LONG MEASUREMENT	CORP. LOCATION	REMARKS
93 ST. ANNE'S ROAD	38	38	0.54 WEL HSE	0.6 N OF S/C	--
97 ST. ANNE'S ROAD	12	12	2.63 NSL HSE	2.6 S OF S/C	--
99 ST. ANNE'S ROAD	UNKN	12	5.41 SNL HSE	OPP S/C	RENEW TO P
100 ST. ANNE'S ROAD	UNKN	CU	9.797 SSL OAKLEIGH PL	OPP S/C	RECONNECT SERVICE
101 ST. ANNE'S ROAD	UNKN	12	0.69 SNL HSE	OPP S/C	RENEW TO P
103 ST. ANNE'S ROAD	UNKN	20	1.13 SNL HSE	OPP S/C	RECONNECT SERVICE
104 ST. ANNE'S ROAD	UNKN	CU	27.637 SSL OAKLEIGH PL	OPP S/C	RENEW TO P
105 ST. ANNE'S ROAD	UNKN	12	0.69 SNL HSE	OPP S/C	RENEW TO P
108 ST. ANNE'S ROAD	UNKN	12	0.35 SNL HSE	OPP S/C	RENEW TO P
112 ST. ANNE'S ROAD	UNKN	CU	27.701>NNL VICTORY PL	OPP S/C	RECONNECT SERVICE
113 ST. ANNE'S ROAD	UNKN	UNKN	8.37 SNL HSE	2.8 N OF S/C	--
113 ST. ANNE'S ROAD	UNKN	UNKN	4.338 NSL VICTORY PL	4.6 N OF S/C	--
113 ST. ANNE'S ROAD	UNKN	UNKN	7.49 SNL HSE	4.6 N OF S/C	--
113 ST. ANNE'S ROAD	UNKN	UNKN	5.214 NSL VICTORY PL	4.6 N OF S/C	--

\*SERVICES TO BE RENEWED TO P. ALL OTHERS TO BE RECONNECTED

**ENGINEERS**  
**GEOSCIENTISTS**  
**MANITOBA**  
 Certificate of Authorization  
 WSP Canada Inc.  
 No. 5750

NOTE: ALL VALVES TO BE INSTALLED CLOCKWISE TO CLOSE



**WARNING**  
 IF POWER EQUIPMENT OR EXPLOSIVES ARE TO BE USED FOR EXCAVATION ON THIS PROJECT THE CONTRACTOR MUST:  
 1) NOTIFY THE GAS COMPANY OF THE PROPOSED LOCATION OF EXCAVATION.  
 2) TAKE PRECAUTION TO AVOID DAMAGE TO GAS COMPANY INSTALLATIONS.  
 SEE PROVINCIAL REGULATION 210/72 FOR DETAILS

**LOCATION APPROVED**  
 UNDERGROUND STRUCTURES  
 SUPV. U/G STRUCTURES COMMITTEE DATE  
 NOTE:  
 LOCATION OF UNDERGROUND STRUCTURES AS SHOWN ARE BASED ON THE BEST INFORMATION AVAILABLE BUT NO GUARANTEE IS GIVEN THAT ALL EXISTING UTILITIES ARE SHOWN OR THAT THE GIVEN LOCATIONS ARE EXACT. CONFIRMATION OF EXISTENCE AND EXACT LOCATION OF ALL SERVICES MUST BE OBTAINED FROM THE INDIVIDUAL UTILITIES BEFORE PROCEEDING WITH CONSTRUCTION.

B.M. ELEV.			
G			
F			
E			
D			
C			
B	ISSUED FOR TENDER	2025/02/18	N.T.
A	PRELIMINARY DESIGN	2025/01/27	N.T.
NO.	REVISIONS	DATE	BY

**wsp**  
 1600 Buffalo Place  
 Winnipeg, Manitoba  
 R3T 6B8 Canada  
 Phone: 204-477-6650  
 Fax: 204-474-2864  
 wsp.com

DESIGNED BY: N.T.  
 CHECKED BY: K.G.  
 DRAWN BY: N.T.  
 APPROVED BY: S.M.  
 RELEASED FOR CONSTRUCTION  
 DATE: 2025 02 18

ENGINEER'S SEAL  
 CONSULTANT DRAWING NUMBER  
**CA0043377.5914-12**

**THE CITY OF WINNIPEG**  
 WATER AND WASTE DEPARTMENT  
 ENGINEERING DIVISION  
 2025 ST. ANNE'S WATERMAIN RENEWAL  
 ST. ANNE'S ROAD  
 4.8 WEL VICTORY PL TO  
 13.0 EEL OAKLEIGH PL

SHEET **03** OF **09**  
 CITY DRAWING NUMBER  
**D-17180**