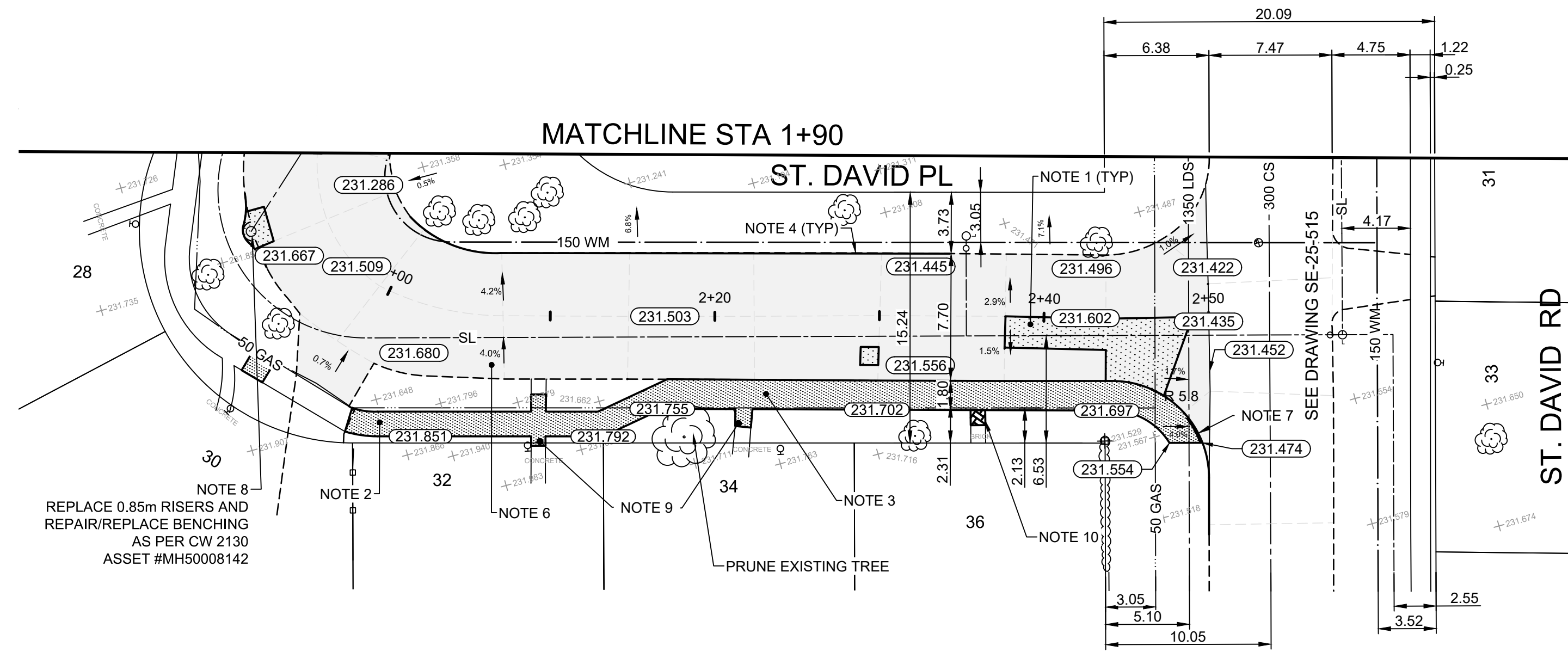


- CONSTRUCTION NOTES**
1. REMOVE EXISTING PAVEMENT AND CONSTRUCT NEW 150mm REINFORCED CONCRETE PAVEMENT
  2. CONSTRUCT NEW 100mm CONCRETE SIDEWALK (SD-228A, SD-228AA, E24)
  3. REMOVE EXISTING CURB AND CONSTRUCT NEW CONCRETE MONLITHIC CURB AND SIDEWALK (SD-228B)
  4. REMOVE EXISTING CURB AND CONSTRUCT NEW BARRIER CURB (SD-205)
  5. REMOVE EXISTING CURB INLET AND INSTALL NEW CURB INLET FRAME WITH INLET BOX AND COVER, CONNECT TO EXISTING CATCH BASIN (SD-222)
  6. CONSTRUCT NEW 80mm (TYP.) ASPHALT PAVEMENT OVERLAY (TYPE MS1)
  7. CONSTRUCT NEW CURB RAMP (SD-229D)
  8. ADJUST FRAME AND COVER TO GRADE AS PER CW 3210
  9. REPLACE 100mm CONCRETE PRIVATE WALK
  10. RE-GRADE EXISTING PAVING STONES
  11. RE-GRADE EXISTING PRECAST CONCRETE SIDEWALK BLOCKS



- GENERAL NOTES**
- A. PAVEMENT DIMENSIONS ARE TO BACK OF CURB
  - B. ALL CURB RADII UNDER 15.0m SHALL BE MODIFIED (SD-203B)
  - C. CURB REPLACEMENT AS DIRECTED BY CONTRACT ADMINISTRATOR
  - D. CONTRACTOR TO CONFIRM THE LOCATION OF ALL UTILITIES/SERVICES IN THE FIELD PRIOR TO CONSTRUCTION
  - E. ADJUST ALL EXISTING WATER VALVES AND CURB STOPS TO GRADE
  - F. PAVEMENT REPAIRS SHOWN ARE A REPRESENTATIVE SAMPLE OF THE TENDER QUANTITIES
  - G. ASPHALT TIE-INS ON APPROACHES TO BE DETERMINED IN FIELD BY THE CONTRACT ADMINISTRATOR

**ISSUED FOR TENDER**  
NOT TO BE USED FOR CONSTRUCTION

**METRIC**  
WHOLE NUMBERS INDICATE MILLIMETERS  
DECIMALIZED NUMBERS INDICATE METERS  
TENDER NO. 13-2025

EXISTING	LEGEND - PLAN	PROPOSED	EXISTING	LEGEND - PLAN	PROPOSED	EXISTING	LEGEND - PROFILE	PROPOSED
	HYDRANT			FLOW ARROW			BOREHOLE LOCATION	
	VALVE			LDS/WWS			CONCRETE	
	CURB STOP			WATERMAIN			CONCRETE SIDEWALK	
	MANHOLE			GAS			ASPHALT	
	CATCH BASIN			TRAFFIC SIGNALS			GRAVEL	
	CATCH PIT/CURB INLET			HYDRO/STREET LIGHT			BRICK	
	HYDRO POLE			MTS/SHAW			PAVEMENT REPAIR FABRIC	
	LIGHT STANDARD			CURB RENEWAL			FENCE	
	UTILITY BOX			PROPERTY LINE			SOUTH GUTTER	
	UTILITY MAN HOLE			RAMP CURB			CENTER LINE	
	SURVEY BAR			ELEVATIONS			NORTH GUTTER	
	SHRUBS			TREE				

**LOCATION APPROVED**  
UNDERGROUND STRUCTURES

IB SOUTH WEST CORNER AT ST.DAVID RD  
B.M. ELEV. 231.529

ENGINEERING DIVISION  
TECHNOLOGY SERVICES BRANCH  
106 - 1155 PACIFIC AVE

DESIGNED BY J.W. CHECKED BY A.K., E.H., R.W.  
DRAWN BY J.W. APPROVED BY J.T.S.

3. ADDENDUM 1 2025/03/24 J.W.  
2. ISSUED FOR TENDER 2025/03/13 J.W.  
1. SUBMIT FOR PLAN APPROVAL 2025/02/07 J.W.

NO. REVISIONS DATE BY

DATE 2025/03/19

ENGINEER'S SEAL  
PROVINCE OF MANITOBA  
J.T. SHUMKA  
Member 32541  
REGISTERED PROFESSIONAL ENGINEER  
2025-03-21

**THE CITY OF WINNIPEG**  
PUBLIC WORKS DEPARTMENT

ST DAVID PLACE  
FROM ST DAVID RD TO ST DAVID RD  
CONCRETE PAVEMENT REHABILITATION AND ASSOCIATED WORKS  
FROM STA. 1+90 TO STA. 2+50

CITY DRAWING NUMBER SE-25-513  
SHEET 14 OF 25  
2