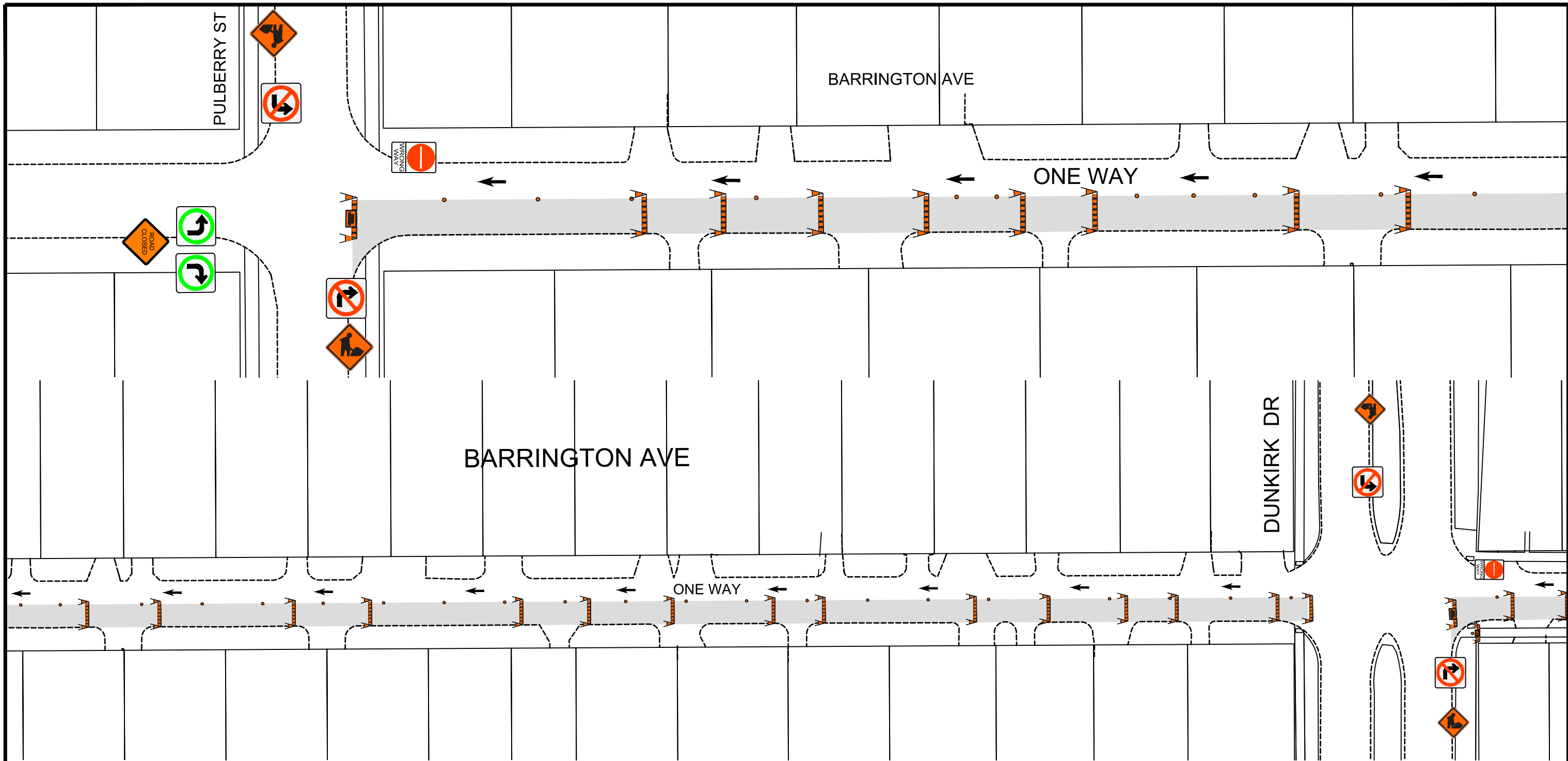







APPENDIX 'B' – TEMPORARY TRAFFIC CONTROL SIGNAGE DRAWINGS







TEMPORARY TRAFFIC CONTROL SIGNAGE DRAWINGS FOR:

Barrington Avenue from Pulberry Street to St Marys Road – Concrete Pavement Rehabilitation
St David Place from St David Road to St David Road – Concrete Pavement Rehabilitation
St David Road from Fermor Avenue to Havelock Avenue – Concrete Pavement Rehabilitation
Thorndale Avenue from St David Road to St Marys Road – Concrete Pavement Rehabilitation
Hastings Avenue from Dunkirk Drive to West Limit – Asphalt Pavement Reconstruction
Bronstone Boulevard from St Marys Road to West Fernwood Avenue – Sidewalk Reconstruction
Carey Park from Kingston Row to Elm Park Road – New Asphalt Pathway
Southdale Pathway from Lakewood Boulevard to Park Grove Drive



TRAFFIC SIGNAGE

- TC-2 ROADWORK 
- RB-11 (L/R) TURN PROHIBITED 
- C 46 SIDEWALK CLOSED 
- WRONG WAY SIGN 
- RB-14 (R/L) TURN ONLY 

- ROAD CLOSED BARRICADE 
- BARRICADE 
- TRAFFIC DIRECTION 
- ADVANCED SIDEWALK CLOSURE 
- WORK AREA 
- POLY POST 

NOTES:

1. ALL TRAFFIC SIGNAGE AND TEMPORARY TRAFFIC CONTROL TO CONFORM WITH THE LATEST REVISION OF THE CITY OF WINNIPEG MANUAL OF TEMPORARY TRAFFIC CONTROL ON CITY STREETS.
2. CONTRACTOR SHALL MAINTAIN SAFE PEDESTRIAN ACCESS AND CROSSINGS. WHERE SIDEWALKS ARE LOCATED ON BOTH SIDES OF THE STREET, CONTRACTOR MUST MAINTAIN PEDESTRIAN ACCESS ON ONE SIDE AT ALL TIMES. CONTRACTOR MUST SUBMIT A SITE ACCESSIBILITY PLAN.
3. CONSTRUCTION TO BE COMPLETED LANE AT A TIME WITH TRAFFIC TO BE MAINTAINED IN ONE DIRECTION. WHEN CONSTRUCTION IS COMPLETE IN FIRST LANE, TRAFFIC WILL BE MOVED TO THE COMPLETED LANE AND TRAFFIC CONTROL MIRRORED.
4. ACCESS TO PUBLIC LANES TO BE MAINTAINED AT ALL TIMES DURING CONSTRUCTION EXCEPT DURING ASPHALT OPERATIONS.
5. PARKING TO BE REMOVED AT TIME OF CONSTRUCTION.
6. ALL TRAFFIC SIGNAGE ON THIS DRAWING IS IN REPRESENTATIVE LOCATION. FOR PROPER SPACING REFER TO THE MANUAL OF TEMPORARY TRAFFIC CONTROL.



FOR INFORMATION ONLY TENDER NO. 13-2025

THE CITY OF WINNIPEG
PUBLIC WORKS DEPARTMENT

BARRINGTON AVENUE
FROM PULBERRY ST TO ST. MARY'S RD
TEMPORARY TRAFFIC SIGNAGE

ENGINEERING DIVISION
TECHNOLOGY SERVICES BRANCH
106 - 1155 PACIFIC AVE

DUNKIRK DR

BARRINGTON AVE






ONE WAY







BARRINGTON AVE

ONE WAY

ST. MARY'S RD

TRAFFIC SIGNAGE

- TC-2 ROADWORK 
- RB-11 (L/R) TURN PROHIBITED 
- C 46 SIDEWALK CLOSED 
- WRONG WAY SIGN 
- RB-14(R/L) TURN ONLY 

- ROAD CLOSED BARRICADE 
- BARRICADE 
- TRAFFIC DIRECTION 
- ADVANCED SIDEWALK CLOSURE 
- WORK AREA 
- POLY POST 

NOTES:

1. ALL TRAFFIC SIGNAGE AND TEMPORARY TRAFFIC CONTROL TO CONFORM WITH THE LATEST REVISION OF THE CITY OF WINNIPEG MANUAL OF TEMPORARY TRAFFIC CONTROL ON CITY STREETS.
2. CONTRACTOR SHALL MAINTAIN SAFE PEDESTRIAN ACCESS AND CROSSINGS. WHERE SIDEWALKS ARE LOCATED ON BOTH SIDES OF THE STREET, CONTRACTOR MUST MAINTAIN PEDESTRIAN ACCESS ON ONE SIDE AT ALL TIMES. CONTRACTOR MUST SUBMIT A SITE ACCESSIBILITY PLAN.
3. CONSTRUCTION TO BE COMPLETED LANE AT A TIME WITH TRAFFIC TO BE MAINTAINED IN ONE DIRECTION. WHEN CONSTRUCTION IS COMPLETE IN FIRST LANE, TRAFFIC WILL BE MOVED TO THE COMPLETED LANE AND TRAFFIC CONTROL MIRRORED.
4. ACCESS TO PUBLIC LANES TO BE MAINTAINED AT ALL TIMES DURING CONSTRUCTION EXCEPT DURING ASPHALT OPERATIONS.
5. PARKING TO BE REMOVED AT TIME OF CONSTRUCTION.
6. ALL TRAFFIC SIGNAGE ON THIS DRAWING IS IN REPRESENTATIVE LOCATION. FOR PROPER SPACING REFER TO THE MANUAL OF TEMPORARY TRAFFIC CONTROL.

FOR INFORMATION ONLY

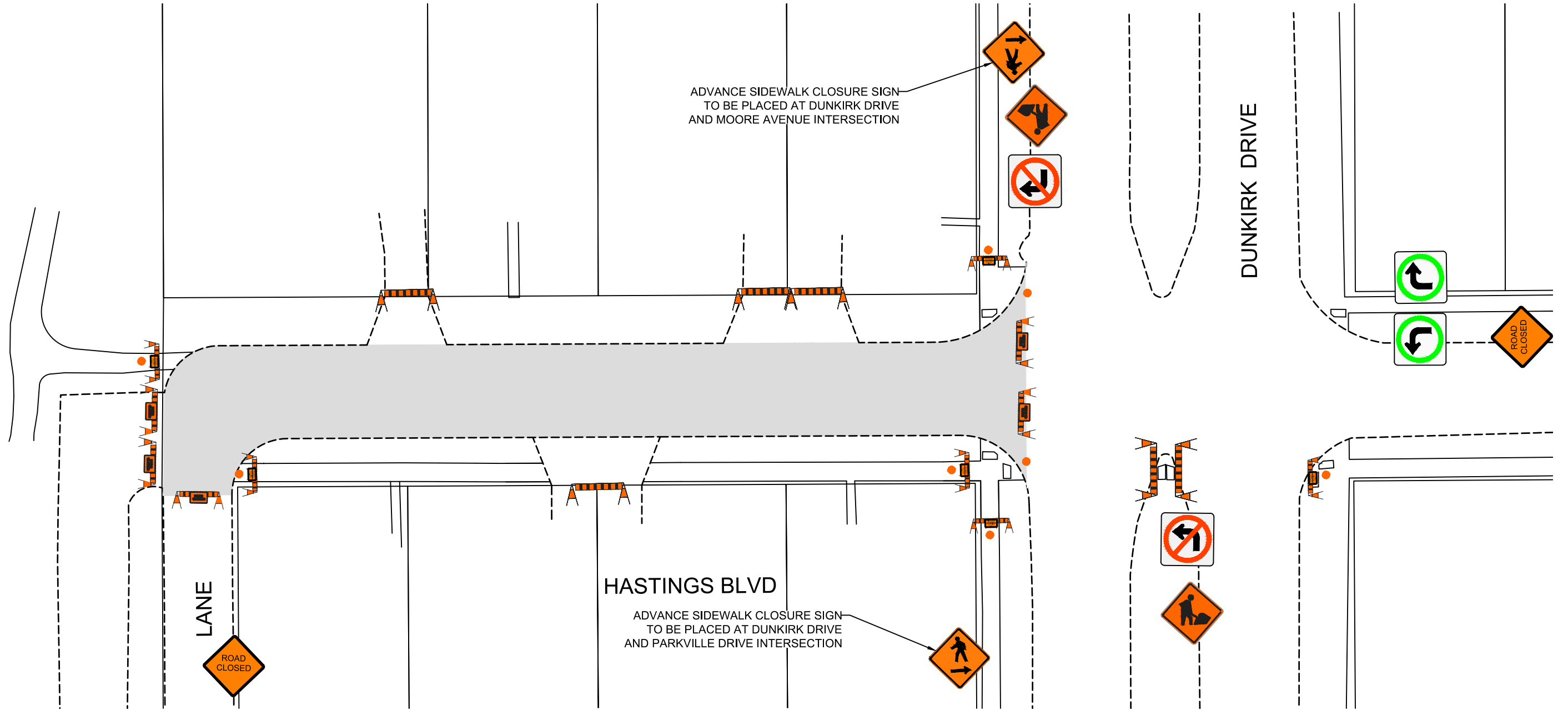
TENDER NO. 13-2025

THE CITY OF WINNIPEG
PUBLIC WORKS DEPARTMENT

BARRINGTON AVENUE
FROM PULBERRY ST TO ST. MARY'S RD
TEMPORARY TRAFFIC SIGNAGE

ENGINEERING DIVISION
TECHNOLOGY SERVICES BRANCH
106 - 1155 PACIFIC AVE





TRAFFIC SIGNAGE

- TC-2 ROADWORK
- RB-11 (L/R) TURN PROHIBITED
- C 46 SIDEWALK CLOSED
- WRONG WAY SIGN
- RB-14(R/L) TURN ONLY



- ROAD CLOSED BARRICADE
- BARRICADE
- TRAFFIC DIRECTION
- ADVANCED SIDEWALK CLOSURE
- WORK AREA
- POLY POST



NOTES:

1. ALL TRAFFIC SIGNAGE AND TEMPORARY TRAFFIC CONTROL TO CONFORM WITH THE LATEST REVISION OF THE CITY OF WINNIPEG MANUAL OF TEMPORARY TRAFFIC CONTROL ON CITY STREETS.
2. CONTRACTOR SHALL MAINTAIN SAFE PEDESTRIAN ACCESS AND CROSSINGS. WHERE SIDEWALKS ARE LOCATED ON BOTH SIDES OF THE STREET, CONTRACTOR MUST MAINTAIN PEDESTRIAN ACCESS ON ONE SIDE AT ALL TIMES. CONTRACTOR MUST SUBMIT A SITE ACCESSIBILITY PLAN.
3. CONSTRUCTION TO BE COMPLETED LANE AT A TIME WITH TRAFFIC TO BE MAINTAINED IN ONE DIRECTION. WHEN CONSTRUCTION IS COMPLETE IN FIRST LANE, TRAFFIC WILL BE MOVED TO THE COMPLETED LANE AND TRAFFIC CONTROL MIRRORED.
4. ACCESS TO PUBLIC LANES TO BE MAINTAINED AT ALL TIMES DURING CONSTRUCTION EXCEPT DURING ASPHALT OPERATIONS.
5. PARKING TO BE REMOVED AT TIME OF CONSTRUCTION.
6. ALL TRAFFIC SIGNAGE ON THIS DRAWING IS IN REPRESENTATIVE LOCATION. FOR PROPER SPACING REFER TO THE MANUAL OF TEMPORARY TRAFFIC CONTROL.

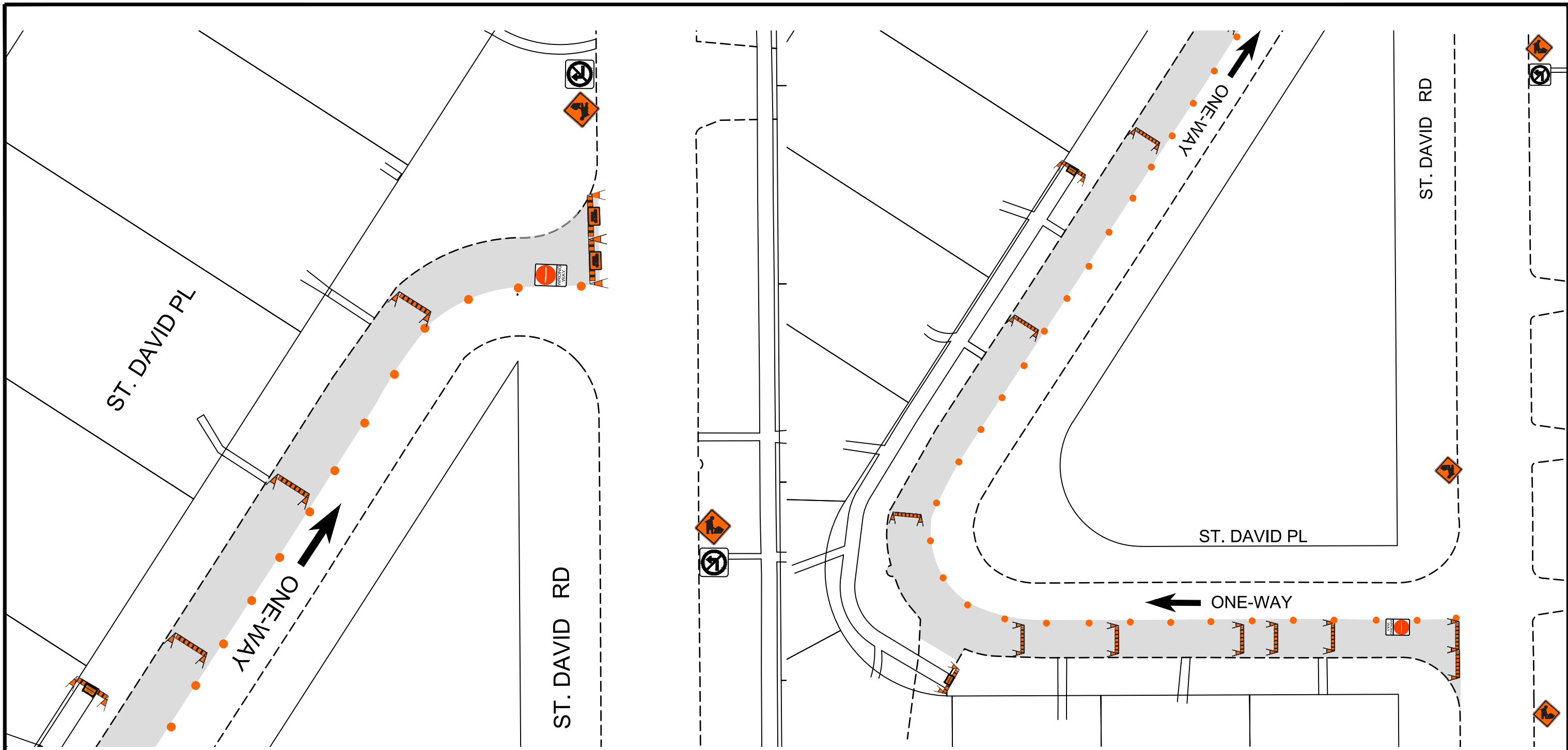


FOR INFORMATION ONLY TENDER NO. 13-2025

THE CITY OF WINNIPEG
PUBLIC WORKS DEPARTMENT

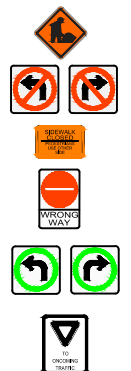
HASTINGS BOULEVARD
FROM LANE TO DUNKIRK DR
TEMPORARY TRAFFIC SIGNAGE

ENGINEERING DIVISION
TECHNOLOGY SERVICES BRANCH
106 - 1155 PACIFIC AVE



TRAFFIC SIGNAGE

- TC-2 ROADWORK
- RB-11 (L/R) TURN PROHIBITED
- C 46 SIDEWALK CLOSED
- WRONG WAY SIGN
- RB-14(R/L) TURN ONLY
- TC-17 YIELD TO ONCOMING TRAFFIC



- ROAD CLOSED BARRICADE
- BARRICADE
- TRAFFIC DIRECTION
- ADVANCED SIDEWALK CLOSURE
- WORK AREA
- POLY POST
- RB-25 KEEP RIGHT/LEFT



NOTES:

1. ALL TRAFFIC SIGNAGE AND TEMPORARY TRAFFIC CONTROL TO CONFORM WITH THE LATEST REVISION OF THE CITY OF WINNIPEG MANUAL OF TEMPORARY TRAFFIC CONTROL ON CITY STREETS.
2. CONTRACTOR SHALL MAINTAIN SAFE PEDESTRIAN ACCESS AND CROSSINGS. WHERE SIDEWALKS ARE LOCATED ON BOTH SIDES OF THE STREET, CONTRACTOR MUST MAINTAIN PEDESTRIAN ACCESS ON ONE SIDE AT ALL TIMES. CONTRACTOR MUST SUBMIT A SITE ACCESSIBILITY PLAN.
3. CONSTRUCTION TO BE COMPLETED LANE AT A TIME WITH TRAFFIC TO BE MAINTAINED IN ONE DIRECTION. WHEN CONSTRUCTION IS COMPLETE IN FIRST LANE, TRAFFIC WILL BE MOVED TO THE COMPLETED LANE AND TRAFFIC CONTROL MIRRORED.
4. PARKING TO BE REMOVED AT TIME OF CONSTRUCTION.
5. ALL TRAFFIC SIGNAGE ON THIS DRAWING IS IN REPRESENTATIVE LOCATION. FOR PROPER SPACING REFER TO THE MANUAL OF TEMPORARY TRAFFIC CONTROL.

FOR INFORMATION ONLY

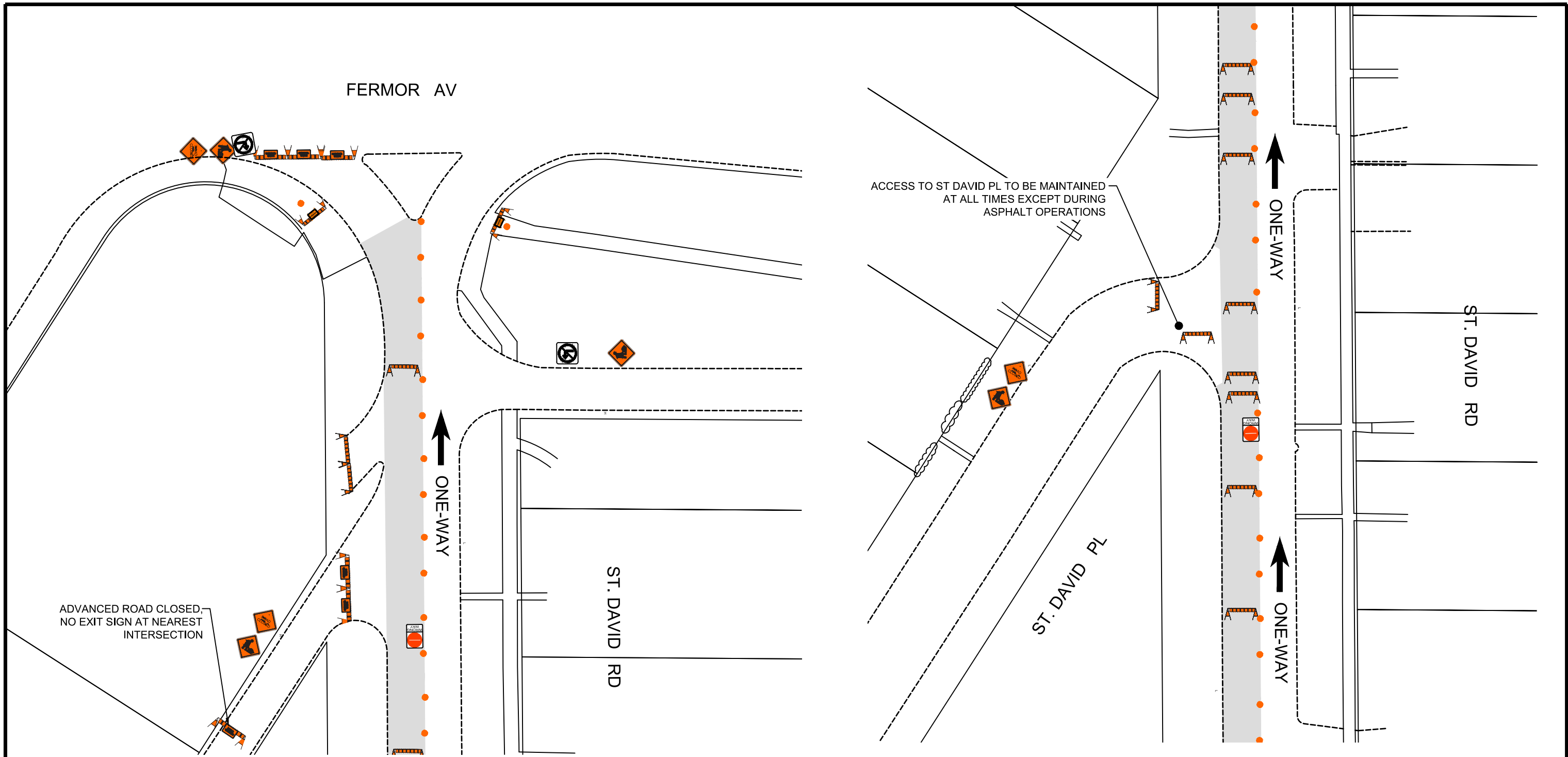
TENDER NO. 13-2025



THE CITY OF WINNIPEG
PUBLIC WORKS DEPARTMENT

ST. DAVID PLACE
FROM FERMOR AVE TO HAVELOCK AVE
TEMPORARY TRAFFIC SIGNAGE

ENGINEERING DIVISION
TECHNOLOGY SERVICES BRANCH
106 - 1155 PACIFIC AVE



TRAFFIC SIGNAGE

- TC-2 ROADWORK
- RB-11 (L/R) TURN PROHIBITED
- C 46 SIDEWALK CLOSED
- WRONG WAY SIGN
- RB-14(R/L) TURN ONLY
- TC-17 YIELD TO ONCOMING TRAFFIC



ROAD CLOSED BARRICADE

- BARRICADE
- TRAFFIC DIRECTION
- ADVANCED SIDEWALK CLOSURE
- WORK AREA
- POLY POST
- RB-25 KEEP RIGHT/LEFT



NOTES:

1. ALL TRAFFIC SIGNAGE AND TEMPORARY TRAFFIC CONTROL TO CONFORM WITH THE LATEST REVISION OF THE CITY OF WINNIPEG MANUAL OF TEMPORARY TRAFFIC CONTROL ON CITY STREETS.
2. CONTRACTOR SHALL MAINTAIN SAFE PEDESTRIAN ACCESS AND CROSSINGS. WHERE SIDEWALKS ARE LOCATED ON BOTH SIDES OF THE STREET, CONTRACTOR MUST MAINTAIN PEDESTRIAN ACCESS ON ONE SIDE AT ALL TIMES. CONTRACTOR MUST SUBMIT A SITE ACCESSIBILITY PLAN.
3. CONSTRUCTION TO BE COMPLETED LANE AT A TIME WITH TRAFFIC TO BE MAINTAINED IN ONE DIRECTION. WHEN CONSTRUCTION IS COMPLETE IN FIRST LANE, TRAFFIC WILL BE MOVED TO THE COMPLETED LANE AND TRAFFIC CONTROL MIRRORED.
4. ACCESS TO PUBLIC LANES TO BE MAINTAINED AT ALL TIMES DURING CONSTRUCTION EXCEPT DURING ASPHALT OPERATIONS.
5. PARKING TO BE REMOVED AT TIME OF CONSTRUCTION.
6. ALL TRAFFIC SIGNAGE ON THIS DRAWING IS IN REPRESENTATIVE LOCATION. FOR PROPER SPACING REFER TO THE MANUAL OF TEMPORARY TRAFFIC CONTROL.

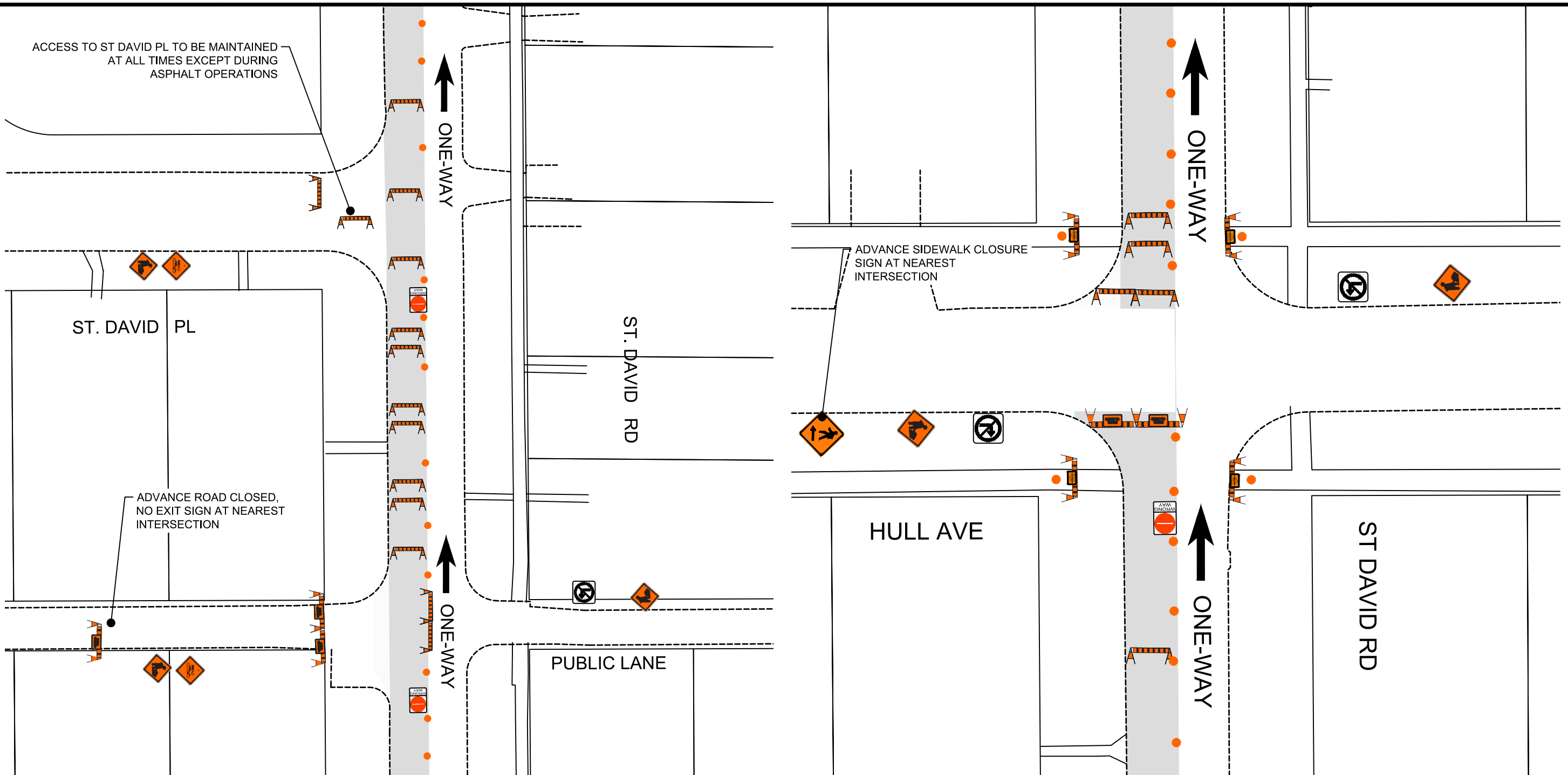
ENGINEERING DIVISION
TECHNOLOGY SERVICES BRANCH
106 - 1155 PACIFIC AVE

FOR INFORMATION ONLY TENDER NO. 13-2025

THE CITY OF WINNIPEG
PUBLIC WORKS DEPARTMENT

ST. DAVID ROAD
FROM FERMOR AVE TO HAVELOCK AVE
TEMPORARY TRAFFIC SIGNAGE





TRAFFIC SIGNAGE

- TC-2 ROADWORK
- RB-11 (L/R) TURN PROHIBITED
- C 46 SIDEWALK CLOSED
- WRONG WAY SIGN
- RB-14(R/L) TURN ONLY
- TC-17 YIELD TO ONCOMING TRAFFIC

- ROAD CLOSED BARRICADE
- BARRICADE
- TRAFFIC DIRECTION
- ADVANCED SIDEWALK CLOSURE
- WORK AREA
- POLY POST
- RB-25 KEEP RIGHT/LEFT

NOTES:

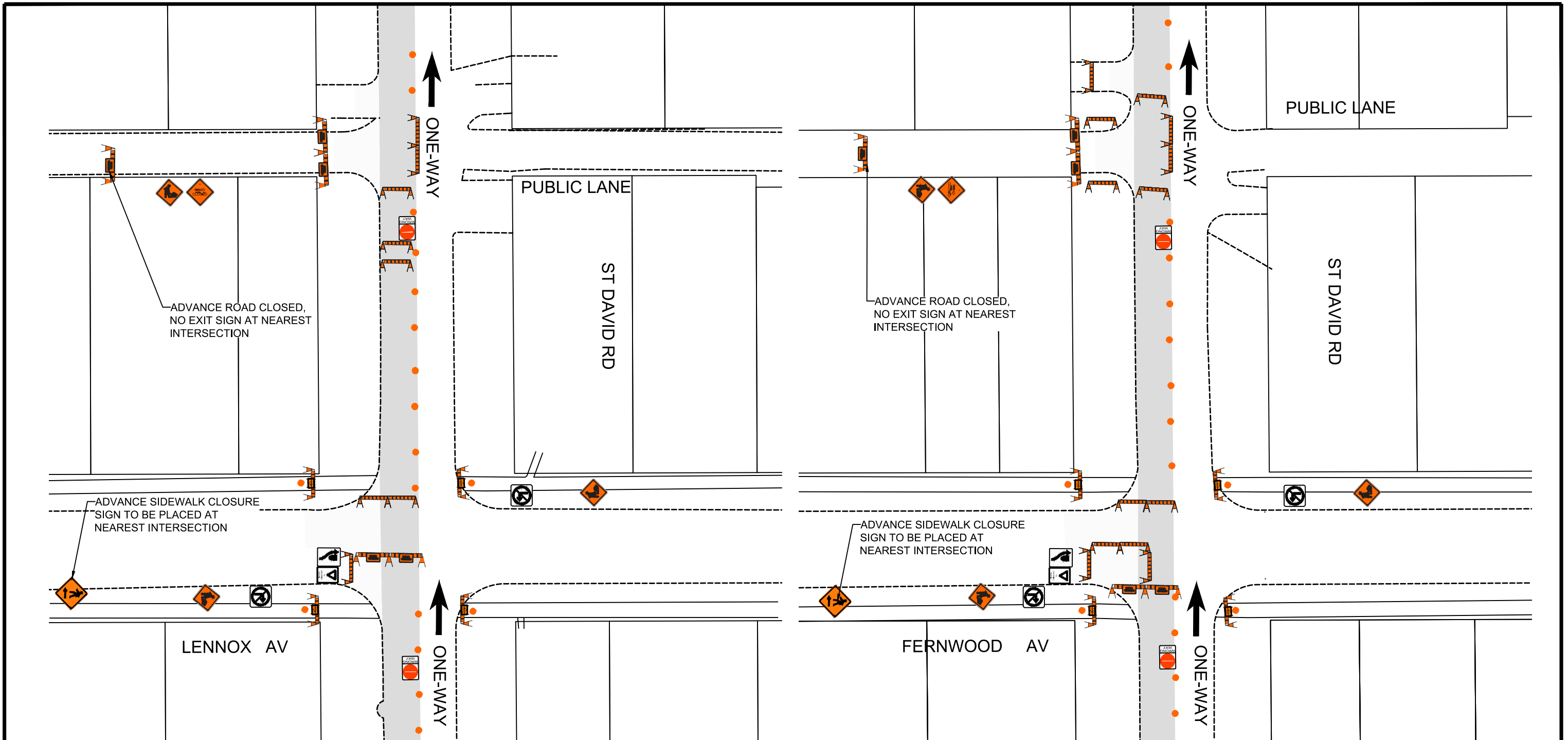
1. ALL TRAFFIC SIGNAGE AND TEMPORARY TRAFFIC CONTROL TO CONFORM WITH THE LATEST REVISION OF THE CITY OF WINNIPEG MANUAL OF TEMPORARY TRAFFIC CONTROL ON CITY STREETS.
2. CONTRACTOR SHALL MAINTAIN SAFE PEDESTRIAN ACCESS AND CROSSINGS. WHERE SIDEWALKS ARE LOCATED ON BOTH SIDES OF THE STREET, CONTRACTOR MUST MAINTAIN PEDESTRIAN ACCESS ON ONE SIDE AT ALL TIMES. CONTRACTOR MUST SUBMIT A SITE ACCESSIBILITY PLAN.
3. CONSTRUCTION TO BE COMPLETED LANE AT A TIME WITH TRAFFIC TO BE MAINTAINED IN ONE DIRECTION. WHEN CONSTRUCTION IS COMPLETE IN FIRST LANE, TRAFFIC WILL BE MOVED TO THE COMPLETED LANE AND TRAFFIC CONTROL MIRRORED.
4. PARKING TO BE REMOVED AT TIME OF CONSTRUCTION.
5. ALL TRAFFIC SIGNAGE ON THIS DRAWING IS IN REPRESENTATIVE LOCATION. FOR PROPER SPACING REFER TO THE MANUAL OF TEMPORARY TRAFFIC CONTROL.

ENGINEERING DIVISION
TECHNOLOGY SERVICES BRANCH
106 - 1155 PACIFIC AVE

FOR INFORMATION ONLY TENDER NO. 13-2025

THE CITY OF WINNIPEG
PUBLIC WORKS DEPARTMENT

ST. DAVID ROAD
FROM FERMOR AVE TO HAVELOCK AVE
TEMPORARY TRAFFIC SIGNAGE



TRAFFIC SIGNAGE

- TC-2 ROADWORK
- RB-11 (L/R) TURN PROHIBITED
- C 46 SIDEWALK CLOSED
- WRONG WAY SIGN
- RB-14(R/L) TURN ONLY
- TC-17 YIELD TO ONCOMING TRAFFIC



ROAD CLOSED BARRICADE

- BARRICADE
- TRAFFIC DIRECTION
- ADVANCED SIDEWALK CLOSURE
- WORK AREA
- POLY POST
- RB-25 KEEP RIGHT/LEFT



NOTES:

1. ALL TRAFFIC SIGNAGE AND TEMPORARY TRAFFIC CONTROL TO CONFORM WITH THE LATEST REVISION OF THE CITY OF WINNIPEG MANUAL OF TEMPORARY TRAFFIC CONTROL ON CITY STREETS.
2. CONTRACTOR SHALL MAINTAIN SAFE PEDESTRIAN ACCESS AND CROSSINGS. WHERE SIDEWALKS ARE LOCATED ON BOTH SIDES OF THE STREET, CONTRACTOR MUST MAINTAIN PEDESTRIAN ACCESS ON ONE SIDE AT ALL TIMES. CONTRACTOR MUST SUBMIT A SITE ACCESSIBILITY PLAN.
3. CONSTRUCTION TO BE COMPLETED LANE AT A TIME WITH TRAFFIC TO BE MAINTAINED IN ONE DIRECTION. WHEN CONSTRUCTION IS COMPLETE IN FIRST LANE, TRAFFIC WILL BE MOVED TO THE COMPLETED LANE AND TRAFFIC CONTROL MIRRORED.
4. ACCESS TO PUBLIC LANES TO BE MAINTAINED AT ALL TIMES DURING CONSTRUCTION EXCEPT DURING ASPHALT OPERATIONS.
5. PARKING TO BE REMOVED AT TIME OF CONSTRUCTION.
6. ALL TRAFFIC SIGNAGE ON THIS DRAWING IS IN REPRESENTATIVE LOCATION. FOR PROPER SPACING REFER TO THE MANUAL OF TEMPORARY TRAFFIC CONTROL.

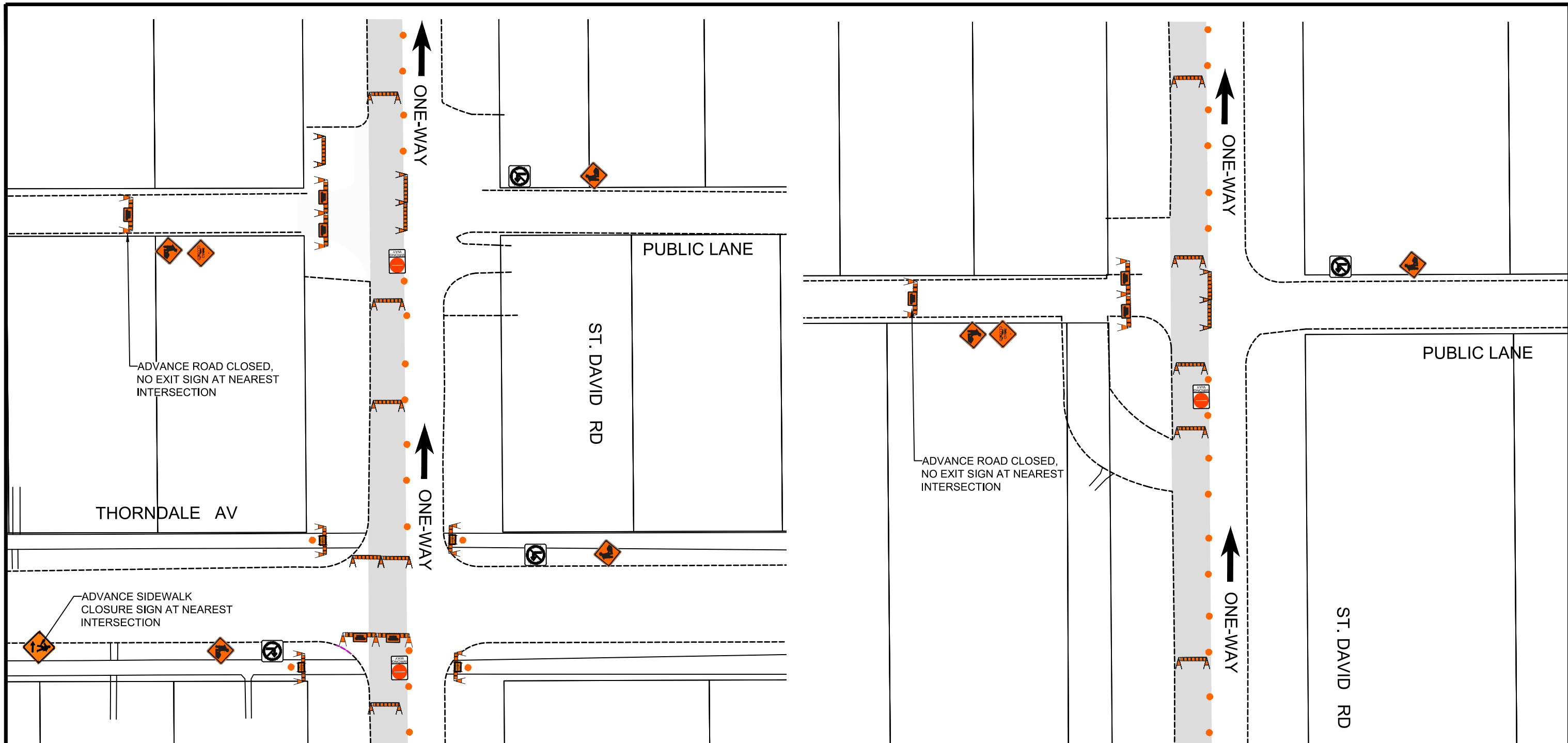


FOR INFORMATION ONLY TENDER NO. 13-2025

THE CITY OF WINNIPEG
PUBLIC WORKS DEPARTMENT

ST. DAVID ROAD
FROM FERMOR AVE TO HAVELOCK AVE
TEMPORARY TRAFFIC SIGNAGE

ENGINEERING DIVISION
TECHNOLOGY SERVICES BRANCH
106 - 1155 PACIFIC AVE



TRAFFIC SIGNAGE

- TC-2 ROADWORK
- RB-11 (L/R) TURN PROHIBITED
- C 46 SIDEWALK CLOSED
- WRONG WAY SIGN
- RB-14 (R/L) TURN ONLY
- TC-17 YIELD TO ONCOMING TRAFFIC

- ROAD CLOSED BARRICADE
- BARRICADE
- TRAFFIC DIRECTION
- ADVANCED SIDEWALK CLOSURE
- WORK AREA
- POLY POST
- RB-25 KEEP RIGHT/LEFT

NOTES:

1. ALL TRAFFIC SIGNAGE AND TEMPORARY TRAFFIC CONTROL TO CONFORM WITH THE LATEST REVISION OF THE CITY OF WINNIPEG MANUAL OF TEMPORARY TRAFFIC CONTROL ON CITY STREETS.
2. CONTRACTOR SHALL MAINTAIN SAFE PEDESTRIAN ACCESS AND CROSSINGS. WHERE SIDEWALKS ARE LOCATED ON BOTH SIDES OF THE STREET, CONTRACTOR MUST MAINTAIN PEDESTRIAN ACCESS ON ONE SIDE AT ALL TIMES. CONTRACTOR MUST SUBMIT A SITE ACCESSIBILITY PLAN.
3. CONSTRUCTION TO BE COMPLETED LANE AT A TIME WITH TRAFFIC TO BE MAINTAINED IN ONE DIRECTION. WHEN CONSTRUCTION IS COMPLETE IN FIRST LANE, TRAFFIC WILL BE MOVED TO THE COMPLETED LANE AND TRAFFIC CONTROL MIRRORED.
4. ACCESS TO PUBLIC LANES TO BE MAINTAINED AT ALL TIMES DURING CONSTRUCTION EXCEPT DURING ASPHALT OPERATIONS.
5. PARKING TO BE REMOVED AT TIME OF CONSTRUCTION.
6. ALL TRAFFIC SIGNAGE ON THIS DRAWING IS IN REPRESENTATIVE LOCATION. FOR PROPER SPACING REFER TO THE MANUAL OF TEMPORARY TRAFFIC CONTROL.

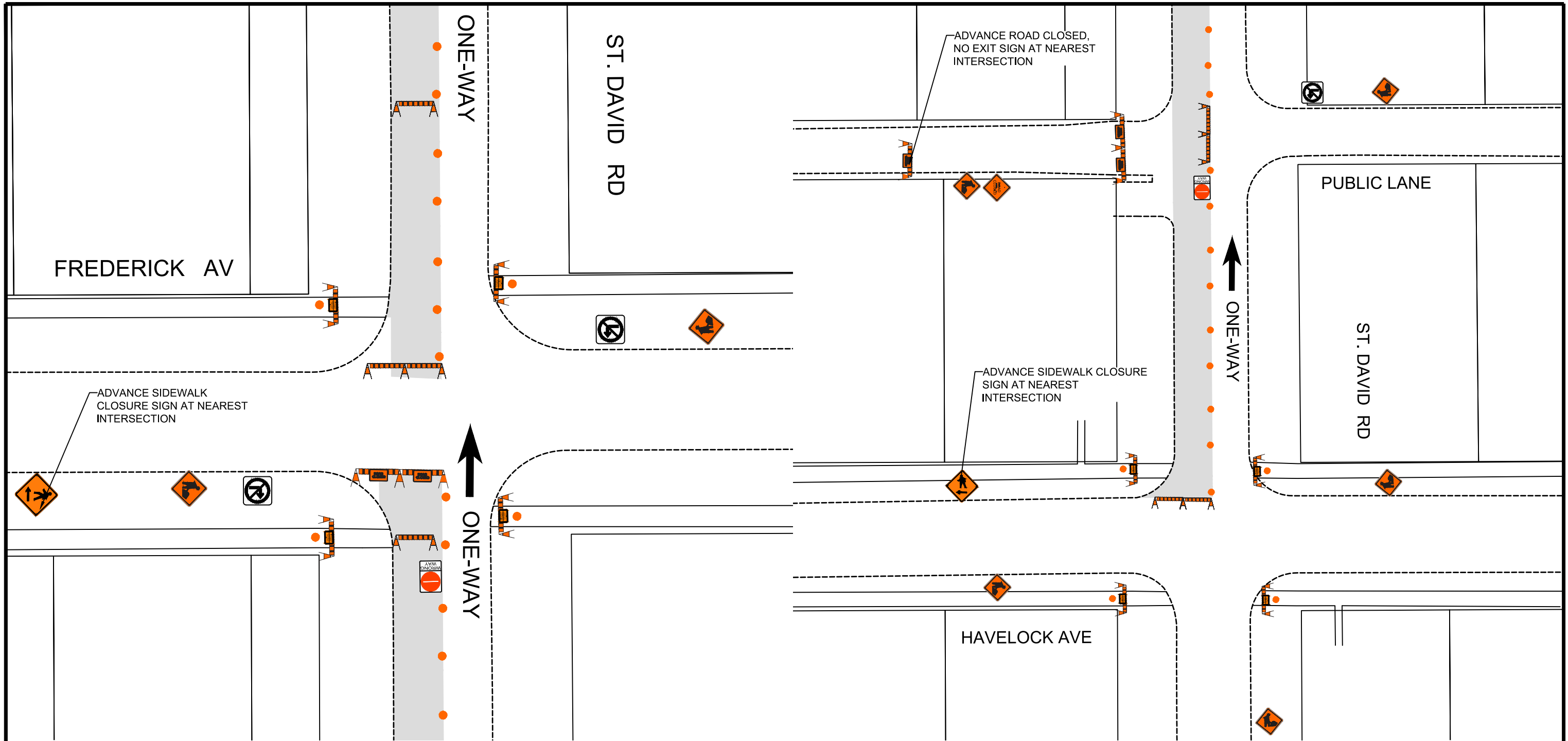


FOR INFORMATION ONLY TENDER NO. 13-2025







THE CITY OF WINNIPEG
PUBLIC WORKS DEPARTMENT

ST. DAVID ROAD
FROM FERMOR AVE TO HAVELOCK AVE
TEMPORARY TRAFFIC SIGNAGE








ENGINEERING DIVISION
TECHNOLOGY SERVICES BRANCH
106 - 1155 PACIFIC AVE



TRAFFIC SIGNAGE

- TC-2 ROADWORK 
- RB-11 (L/R) TURN PROHIBITED 
- C 46 SIDEWALK CLOSED 
- WRONG WAY SIGN 
- RB-14(R/L) TURN ONLY 
- TC-17 YIELD TO ONCOMING TRAFFIC 



- ROAD CLOSED BARRICADE 
- BARRICADE 
- TRAFFIC DIRECTION 
- ADVANCED SIDEWALK CLOSURE 
- WORK AREA 
- POLY POST 
- RB-25 KEEP RIGHT/LEFT 



NOTES:

1. ALL TRAFFIC SIGNAGE AND TEMPORARY TRAFFIC CONTROL TO CONFORM WITH THE LATEST REVISION OF THE CITY OF WINNIPEG MANUAL OF TEMPORARY TRAFFIC CONTROL ON CITY STREETS.
2. CONTRACTOR SHALL MAINTAIN SAFE PEDESTRIAN ACCESS AND CROSSINGS. WHERE SIDEWALKS ARE LOCATED ON BOTH SIDES OF THE STREET, CONTRACTOR MUST MAINTAIN PEDESTRIAN ACCESS ON ONE SIDE AT ALL TIMES. CONTRACTOR MUST SUBMIT A SITE ACCESSIBILITY PLAN.
3. CONSTRUCTION TO BE COMPLETED LANE AT A TIME WITH TRAFFIC TO BE MAINTAINED IN ONE DIRECTION. WHEN CONSTRUCTION IS COMPLETE IN FIRST LANE, TRAFFIC WILL BE MOVED TO THE COMPLETED LANE AND TRAFFIC CONTROL MIRRORED.
4. ACCESS TO PUBLIC LANES TO BE MAINTAINED AT ALL TIMES DURING CONSTRUCTION EXCEPT DURING ASPHALT OPERATIONS.
5. PARKING TO BE REMOVED AT TIME OF CONSTRUCTION.
6. ALL TRAFFIC SIGNAGE ON THIS DRAWING IS IN REPRESENTATIVE LOCATION. FOR PROPER SPACING REFER TO THE MANUAL OF TEMPORARY TRAFFIC CONTROL.

ENGINEERING DIVISION
TECHNOLOGY SERVICES BRANCH
106 - 1155 PACIFIC AVE

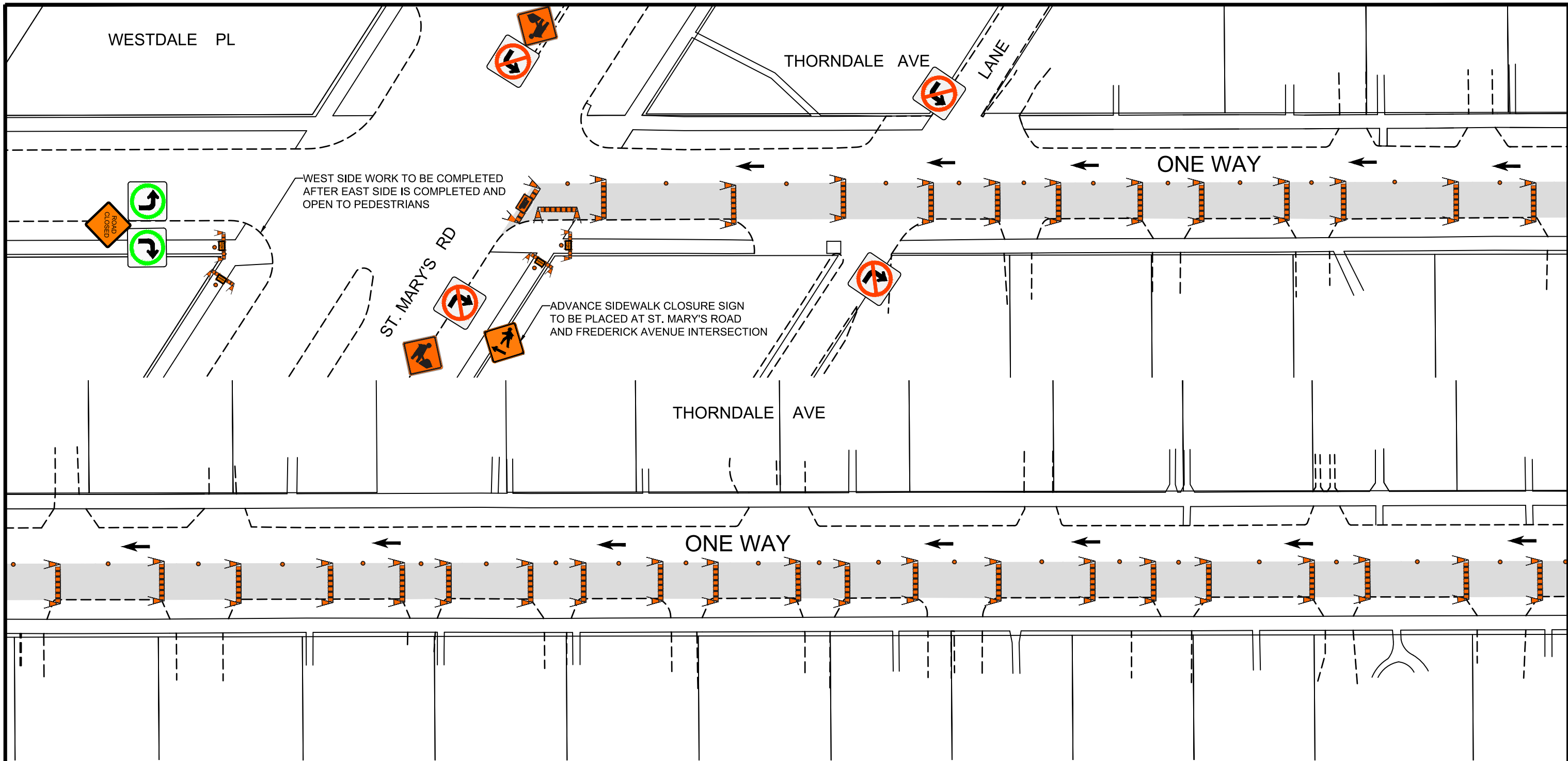
FOR INFORMATION ONLY

TENDER NO. 13-2025



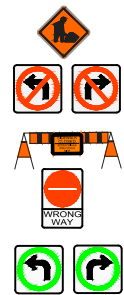
THE CITY OF WINNIPEG
PUBLIC WORKS DEPARTMENT

ST. DAVID ROAD
FROM FERMOR AVE TO HAVELOCK AVE
TEMPORARY TRAFFIC SIGNAGE

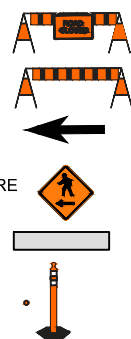


TRAFFIC SIGNAGE

- TC-2 ROADWORK
- RB-11 (L/R) TURN PROHIBITED
- C 46 SIDEWALK CLOSED
- WRONG WAY SIGN
- RB-14(R/L) TURN ONLY



- ROAD CLOSED BARRICADE
- BARRICADE
- TRAFFIC DIRECTION
- ADVANCED SIDEWALK CLOSURE
- WORK AREA
- POLY POST



NOTES:

1. ALL TRAFFIC SIGNAGE AND TEMPORARY TRAFFIC CONTROL TO CONFORM WITH THE LATEST REVISION OF THE CITY OF WINNIPEG MANUAL OF TEMPORARY TRAFFIC CONTROL ON CITY STREETS.
2. CONTRACTOR SHALL MAINTAIN SAFE PEDESTRIAN ACCESS AND CROSSINGS. WHERE SIDEWALKS ARE LOCATED ON BOTH SIDES OF THE STREET, CONTRACTOR MUST MAINTAIN PEDESTRIAN ACCESS ON ONE SIDE AT ALL TIMES. CONTRACTOR MUST SUBMIT A SITE ACCESSIBILITY PLAN.
3. CONSTRUCTION TO BE COMPLETED LANE AT A TIME WITH TRAFFIC TO BE MAINTAINED IN ONE DIRECTION. WHEN CONSTRUCTION IS COMPLETE IN FIRST LANE, TRAFFIC WILL BE MOVED TO THE COMPLETED LANE AND TRAFFIC CONTROL MIRRORED.
4. ACCESS TO PUBLIC LANES TO BE MAINTAINED AT ALL TIMES DURING CONSTRUCTION EXCEPT DURING ASPHALT OPERATIONS.
5. PARKING TO BE REMOVED AT TIME OF CONSTRUCTION.
6. ALL TRAFFIC SIGNAGE ON THIS DRAWING IS IN REPRESENTATIVE LOCATION. FOR PROPER SPACING REFER TO THE MANUAL OF TEMPORARY TRAFFIC CONTROL.

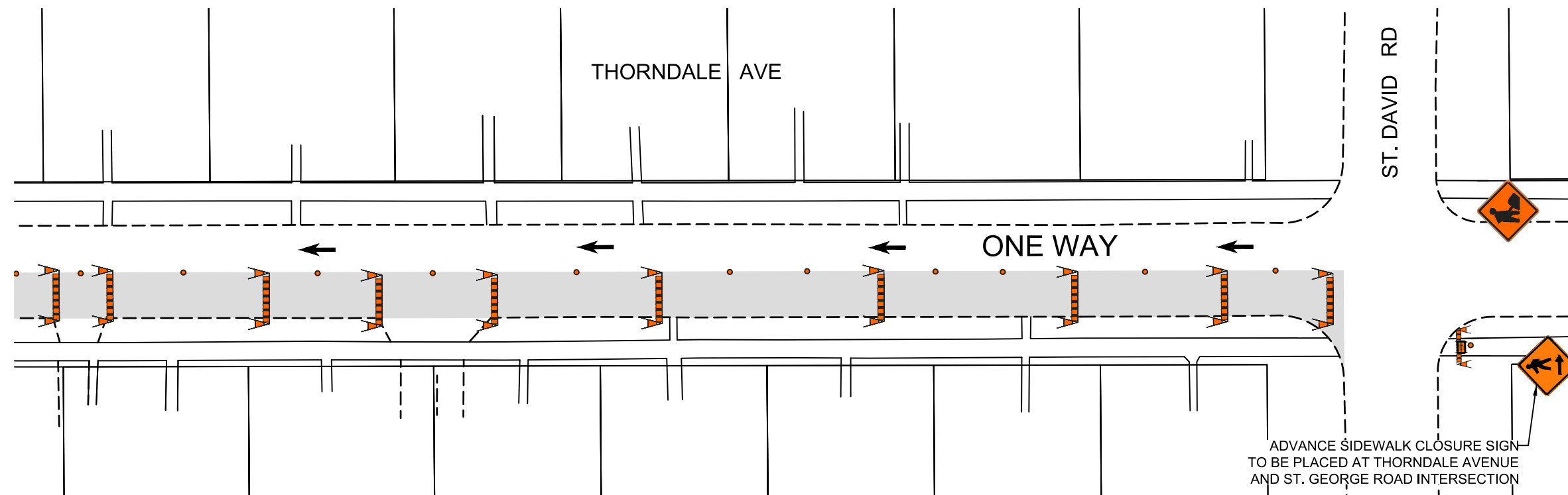


FOR INFORMATION ONLY TENDER NO. 13-2025

THE CITY OF WINNIPEG
PUBLIC WORKS DEPARTMENT

THORNDALE AVENUE
FROM ST. MARY'S RD TO ST. DAVID RD
TEMPORARY TRAFFIC SIGNAGE

ENGINEERING DIVISION
TECHNOLOGY SERVICES BRANCH
106 - 1155 PACIFIC AVE



TRAFFIC SIGNAGE

- TC-2 ROADWORK
- RB-11 (L/R) TURN PROHIBITED
- C 46 SIDEWALK CLOSED
- WRONG WAY SIGN
- RB-14(R/L) TURN ONLY



- ROAD CLOSED BARRICADE
- BARRICADE
- TRAFFIC DIRECTION
- ADVANCED SIDEWALK CLOSURE
- WORK AREA
- POLY POST



NOTES:

1. ALL TRAFFIC SIGNAGE AND TEMPORARY TRAFFIC CONTROL TO CONFORM WITH THE LATEST REVISION OF THE CITY OF WINNIPEG MANUAL OF TEMPORARY TRAFFIC CONTROL ON CITY STREETS.
2. CONTRACTOR SHALL MAINTAIN SAFE PEDESTRIAN ACCESS AND CROSSINGS. WHERE SIDEWALKS ARE LOCATED ON BOTH SIDES OF THE STREET, CONTRACTOR MUST MAINTAIN PEDESTRIAN ACCESS ON ONE SIDE AT ALL TIMES. CONTRACTOR MUST SUBMIT A SITE ACCESSIBILITY PLAN.
3. CONSTRUCTION TO BE COMPLETED LANE AT A TIME WITH TRAFFIC TO BE MAINTAINED IN ONE DIRECTION. WHEN CONSTRUCTION IS COMPLETE IN FIRST LANE, TRAFFIC WILL BE MOVED TO THE COMPLETED LANE AND TRAFFIC CONTROL MIRRORED.
4. ACCESS TO PUBLIC LANES TO BE MAINTAINED AT ALL TIMES DURING CONSTRUCTION EXCEPT DURING ASPHALT OPERATIONS.
5. PARKING TO BE REMOVED AT TIME OF CONSTRUCTION.
6. ALL TRAFFIC SIGNAGE ON THIS DRAWING IS IN REPRESENTATIVE LOCATION. FOR PROPER SPACING REFER TO THE MANUAL OF TEMPORARY TRAFFIC CONTROL.



FOR INFORMATION ONLY TENDER NO. 13-2025

THE CITY OF WINNIPEG
PUBLIC WORKS DEPARTMENT

THORNDALE AVENUE
FROM ST. MARY'S RD TO ST. DAVID RD
TEMPORARY TRAFFIC SIGNAGE

ENGINEERING DIVISION
TECHNOLOGY SERVICES BRANCH
106 - 1155 PACIFIC AVE