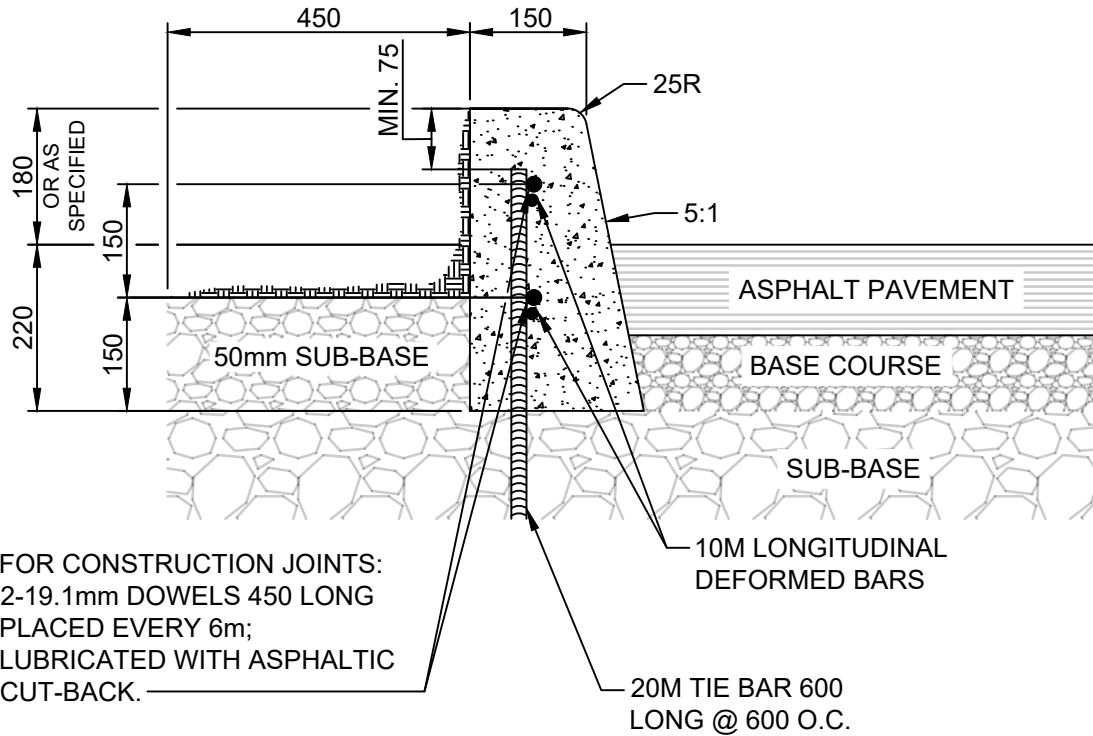


**APPENDIX 'E' – STANDARD DETAIL DRAWINGS FOR CONSTRUCTION OF  
VARIOUS CURB TYPES FOR ASPHALT PAVEMENT**



NOTES:

1. TRANSVERSE SAW CUT EVERY 3m OR AT PAVEMENT JOINTS
2. TRANSVERSE SAW CUTS ARE TO BE A MAXIMUM DEPTH OF 25mm

DIMENSIONS IN MILLIMETRES



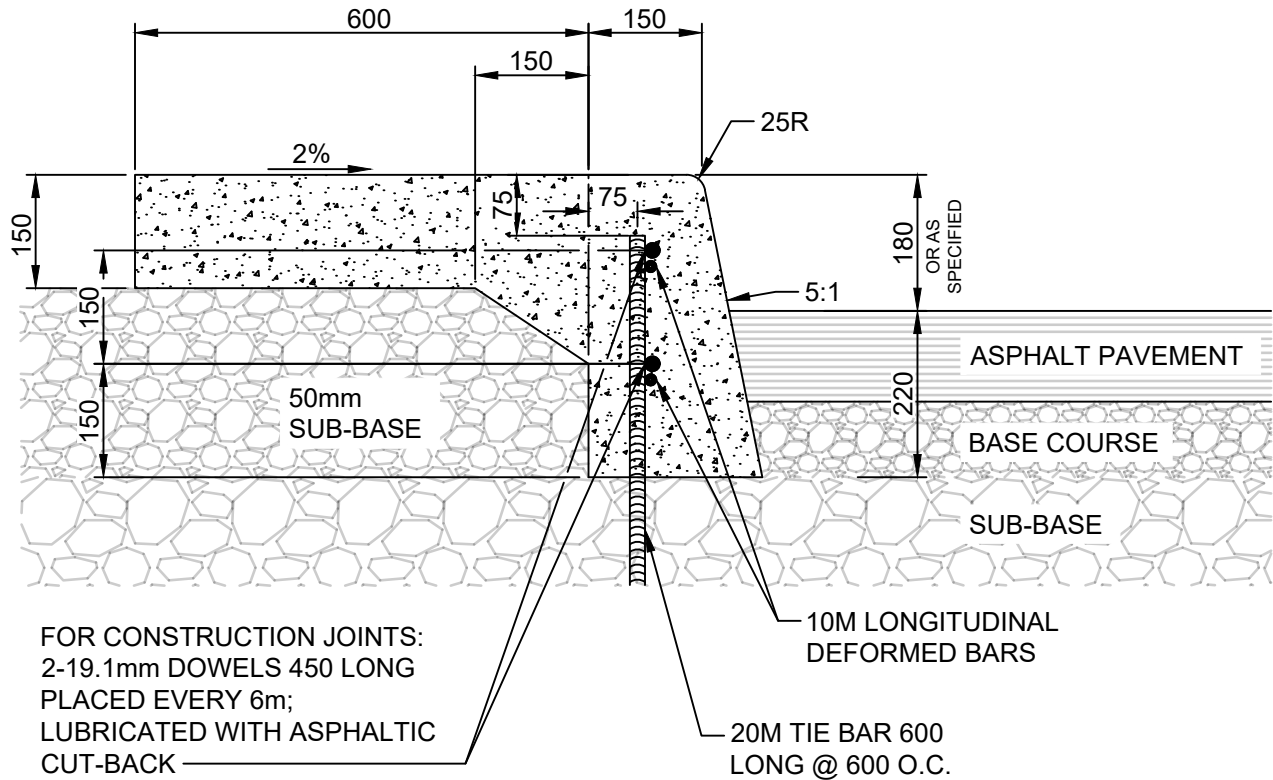
**THE CITY OF WINNIPEG**  
PUBLIC WORKS DEPARTMENT

Reference Spec. No.  
CW 3325

**BARRIER CURB FOR  
ASPHALT PAVEMENT**

Revisions			
No.	Date	Description	By


Designed By: A.G.	Drawn By: R.B.	Scale : <b>N.T.S</b>
Checked By: B.K.	Date: 2024-10-01	
Approved: PAVEMENT MANAGEMENT BRANCH		Drawing No. <b>SD-200A</b>

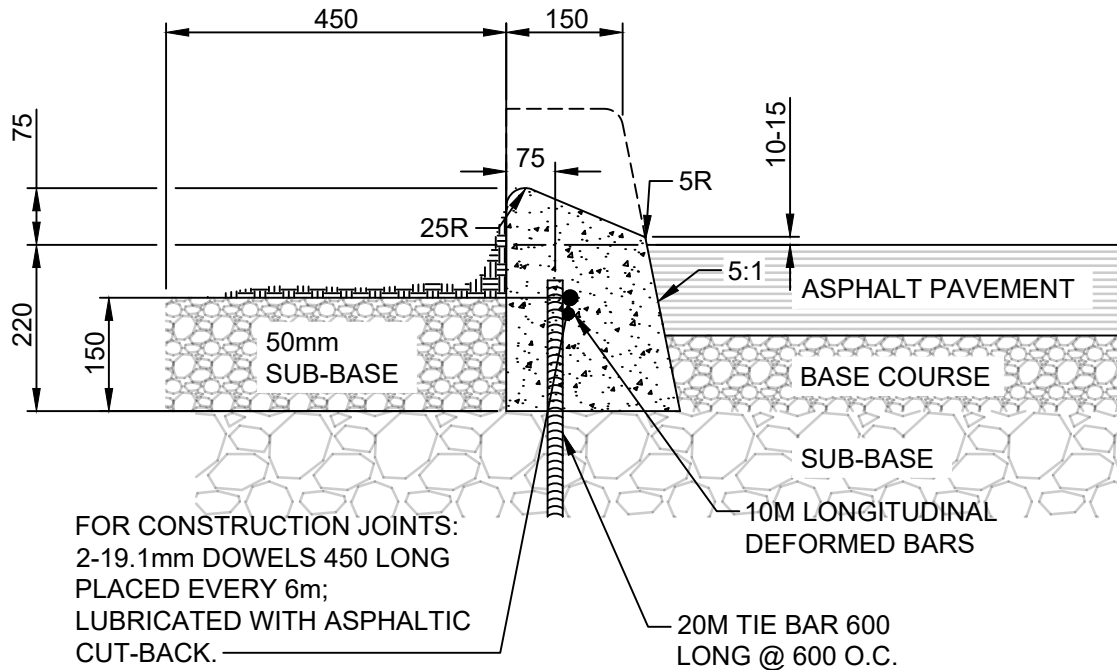


NOTES:

1. TRANSVERSE SAW CUT EVERY 3m OR AT PAVEMENT JOINTS
2. TRANSVERSE SAW CUTS ARE TO BE A MAXIMUM DEPTH OF 25mm

DIMENSIONS IN MILLIMETRES

 <b>THE CITY OF WINNIPEG</b> PUBLIC WORKS DEPARTMENT	Revisions		
Reference Spec. No. CW 3325			
<b>BARRIER CURB WITH INTEGRAL          SPLASH STRIP FOR ASPHALT          PAVEMENT</b>	No.    Date    Description    By		
	Designed By: A.G.	Drawn By: R.B.	Scale : <b>N.T.S</b>
	Checked By: B.K.	Date: 2024-10-01	Drawing No. <b>SD-200B</b>
Approved: PAVEMENT MANAGEMENT BRANCH			



NOTES:

1. TRANSVERSE SAW CUT EVERY 3m OR AT PAVEMENT JOINTS
2. TRANSVERSE SAW CUTS ARE TO BE A MAXIMUM DEPTH OF 25mm

DIMENSIONS IN MILLIMETRES



**THE CITY OF WINNIPEG**  
PUBLIC WORKS DEPARTMENT

Reference Spec. No.  
CW 3325

Revisions

No.	Date	Description	By

**75 mm LIP CURB FOR  
ASPHALT PAVEMENT**

Designed By:  
A.G.

Drawn By:  
R.B.

Scale :  
**N.T.S**

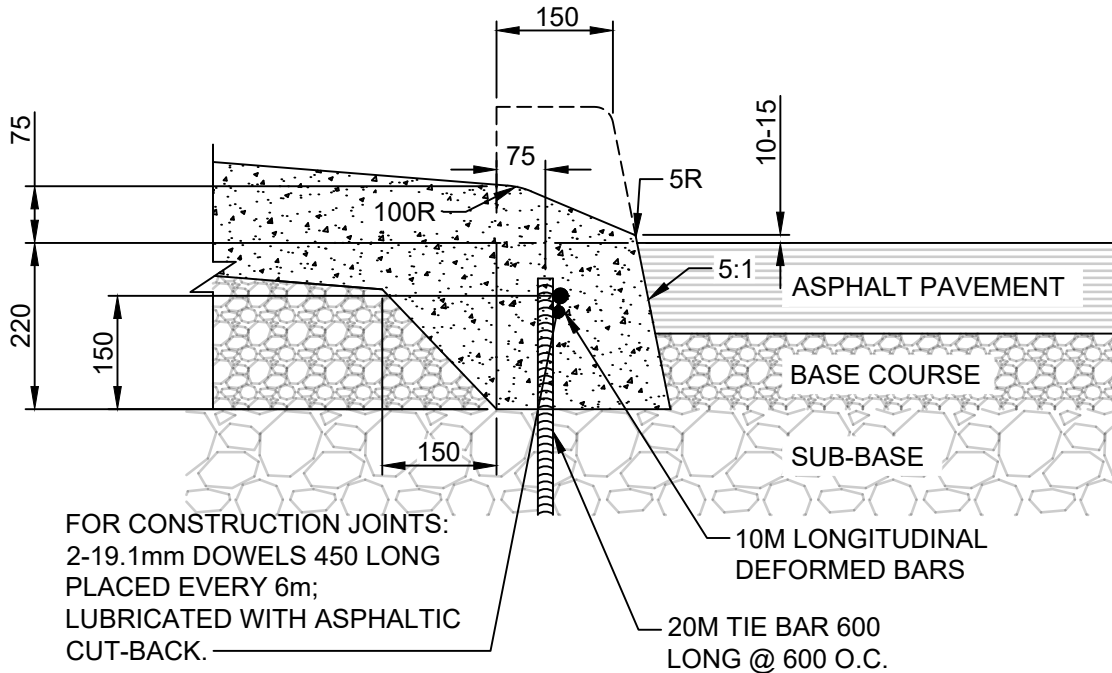
Checked By:  
B.K.

Date:  
2024-10-01

Drawing No.

Approved:  
PAVEMENT MANAGEMENT BRANCH

**SD-202B**



NOTES:

1. TRANSVERSE SAW CUT EVERY 3m OR AT PAVEMENT JOINTS
2. TRANSVERSE SAW CUTS ARE TO BE A MAXIMUM DEPTH OF 25mm

DIMENSIONS IN MILLIMETRES



**THE CITY OF WINNIPEG**  
PUBLIC WORKS DEPARTMENT

Reference Spec. No.  
CW 3325

Revisions

No.	Date	Description	By

**75 mm LIP CURB WITH  
INTEGRAL APPROACH  
FOR ASPHALT PAVEMENT**

Designed By:  
A.G.

Drawn By:  
R.B.

Scale :  
**N.T.S**

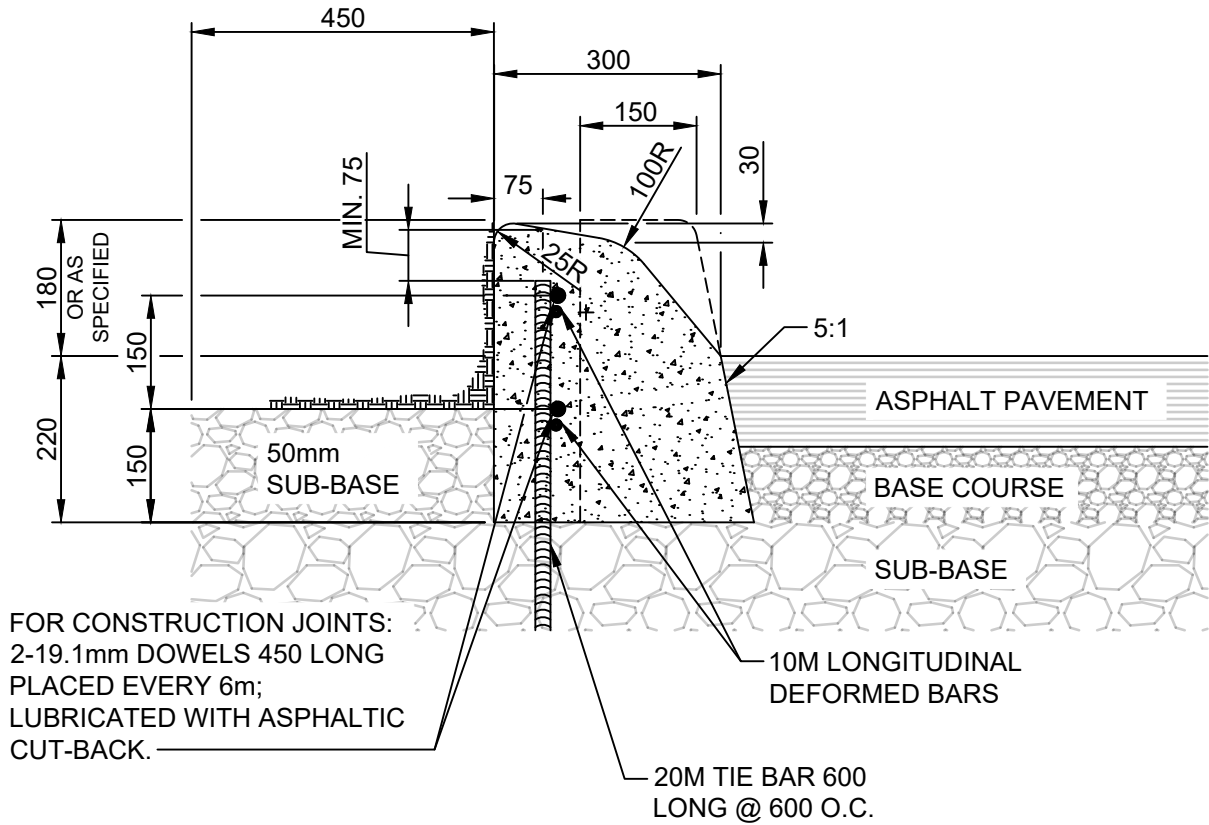
Checked By:  
B.K.

Date:  
2024-10-01

Drawing No.

Approved:  
PAVEMENT MANAGEMENT BRANCH

**SD-202C**



NOTES:

1. TRANSVERSE SAW CUT EVERY 3m OR AT PAVEMENT JOINTS
2. TRANSVERSE SAW CUTS ARE TO BE A MAXIMUM DEPTH OF 25mm

DIMENSIONS IN MILLIMETRES



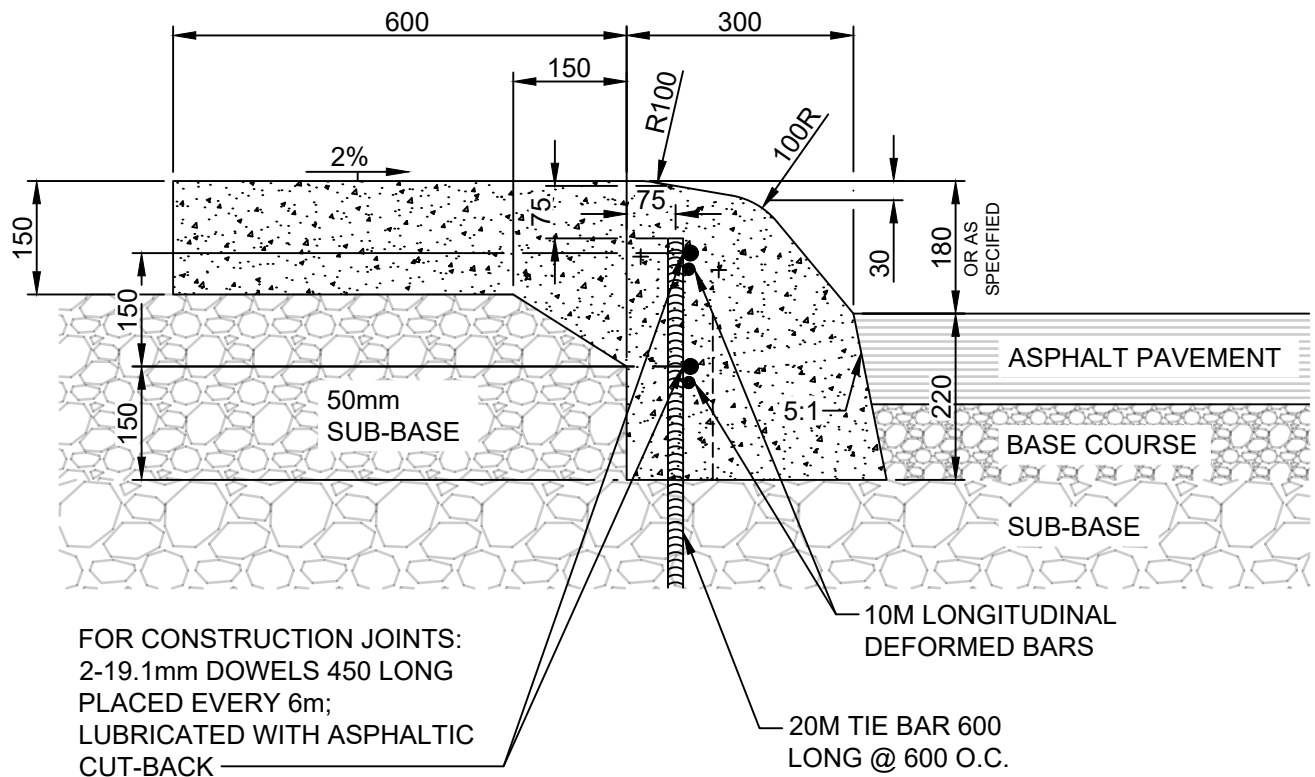
**THE CITY OF WINNIPEG**  
 PUBLIC WORKS DEPARTMENT

Reference Spec. No.  
 CW 3325

Revisions			
No.	Date	Description	By

**MODIFIED BARRIER CURB  
 FOR ASPHALT PAVEMENT**

Designed By: A.G.	Drawn By: R.B.	Scale : <b>N.T.S</b>
Checked By: B.K.	Date: 2024-10-01	Drawing No. <b>SD-203C</b>
Approved: PAVEMENT MANAGEMENT BRANCH		



NOTES:

1. TRANSVERSE SAW CUT EVERY 3m OR AT PAVEMENT JOINTS
2. TRANSVERSE SAW CUTS ARE TO BE A MAXIMUM DEPTH OF 25mm

DIMENSIONS IN MILLIMETRES



**THE CITY OF WINNIPEG**  
PUBLIC WORKS DEPARTMENT

Reference Spec. No.  
CW 3325

Revisions

No.	Date	Description	By

**MODIFIED BARRIER CURB WITH  
INTEGRAL SPLASH STRIP FOR  
ASPHALT PAVEMENT**

Designed By:  
A.G.

Checked By:  
B.K.

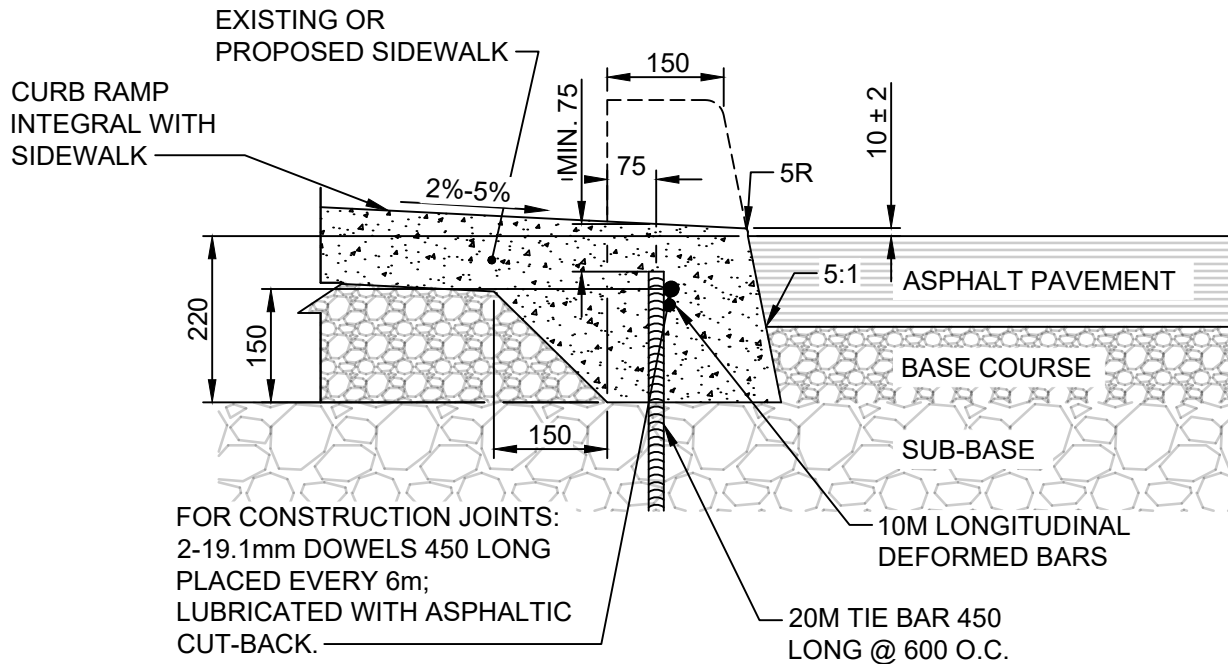
Approved:  
PAVEMENT MANAGEMENT BRANCH

Drawn By:  
R.B.

Date:  
2024-10-01

Scale :  
**N.T.S**

Drawing No.  
**SD-203D**



NOTES:

1. TRANSVERSE SAW CUT EVERY 3m OR AT PAVEMENT JOINTS
2. TRANSVERSE SAW CUTS ARE TO BE A MAXIMUM DEPTH OF 25mm

DIMENSIONS IN MILLIMETRES



**THE CITY OF WINNIPEG**  
PUBLIC WORKS DEPARTMENT

Reference Spec. No.  
CW 3325

Revisions

No.	Date	Description	By

**CURB RAMP FOR  
ASPHALT PAVEMENT**

Designed By:  
A.G.

Checked By:  
B.K.

Approved:  
PAVEMENT MANAGEMENT BRANCH

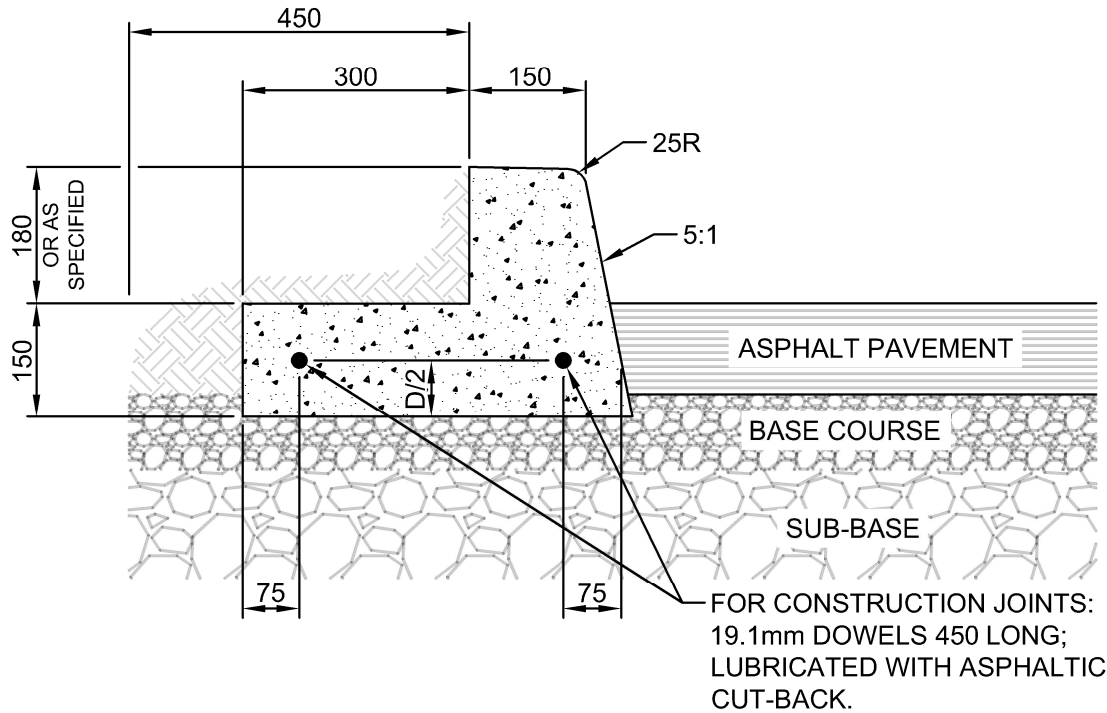
Drawn By:  
R.B.

Date:  
2024-03-19

Scale :  
**N.T.S**

Drawing No.  
**SD-229F**





NOTES:

1. TRANSVERSE SAW CUT EVERY 3m OR AT PAVEMENT JOINTS
2. TRANSVERSE SAW CUTS ARE TO BE A MAXIMUM DEPTH OF 25mm

DIMENSIONS IN MILLIMETRES



**THE CITY OF WINNIPEG**  
PUBLIC WORKS DEPARTMENT

Reference Spec. No.  
CW 3325

Revisions

No.	Date	Description	By

**BARRIER CURB AND  
REVERSED GUTTER FOR  
ASPHALT PAVEMENT**

Designed By:  
A.G.

Drawn By:  
T.K.

Scale :  
**N.T.S**

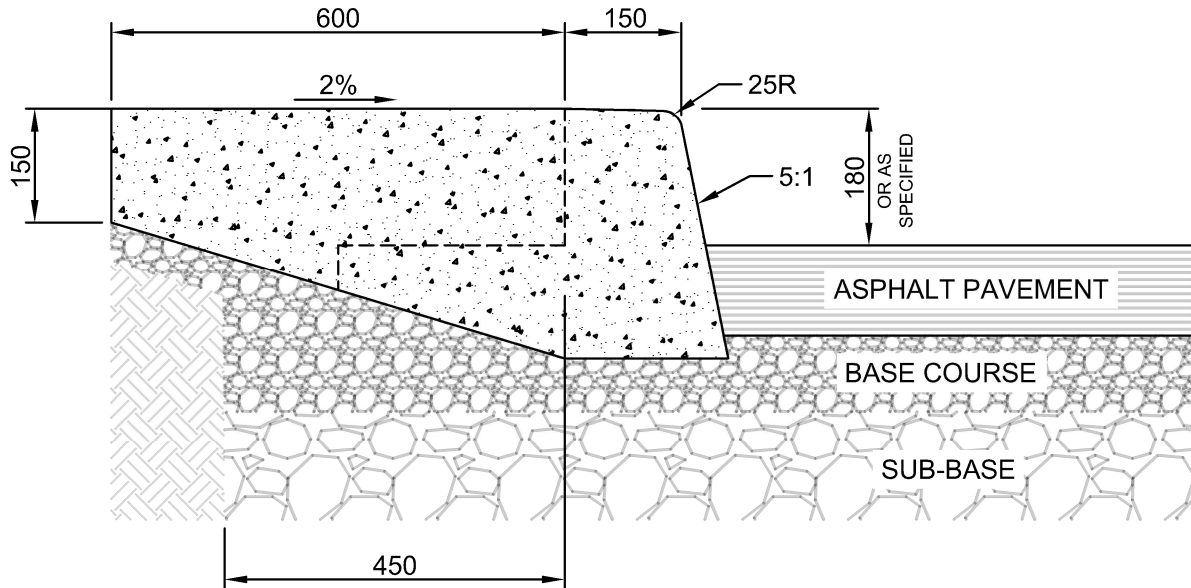
Checked By:  
B.K.

Date:  
2025-02-06

Drawing No.

Approved:  
PAVEMENT MANAGEMENT BRANCH


**SD-200AA**

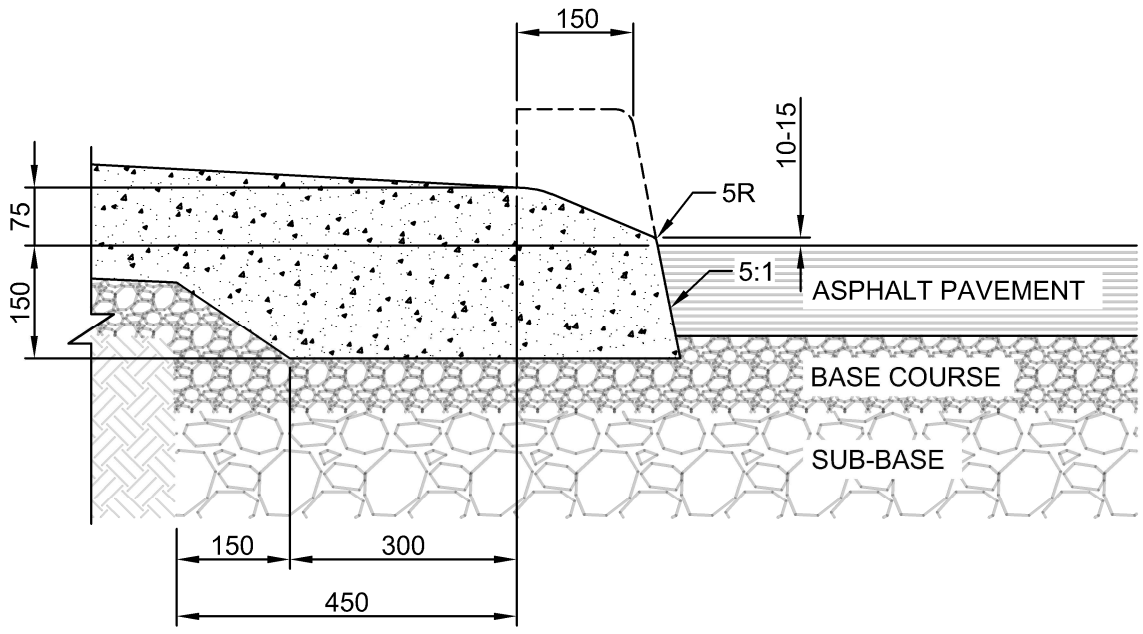


NOTES:

1. TRANSVERSE SAW CUT EVERY 3m OR AT PAVEMENT JOINTS
2. TRANSVERSE SAW CUTS ARE TO BE A MAXIMUM DEPTH OF 25mm
3. FOR CONSTRUCTION JOINTS INSTALL TWO 19.1mm DOWELS 450 LONG; LUBRICATED WITH ASPHALTIC CUT-BACK. REF SD-200AA.

DIMENSIONS IN MILLIMETRES


	<b>THE CITY OF WINNIPEG</b> PUBLIC WORKS DEPARTMENT		Revisions			
	Reference Spec. No. CW 3325					
<b>BARRIER CURB WITH INTEGRAL          SPLASH STRIP FOR ASPHALT          PAVEMENT</b>			No.	Date	Description	By
		Designed By: A.G.		Drawn By: T.K.		Scale : <b>N.T.S</b>
		Checked By: B.K.		Date: 2025-01-31		Drawing No. <b>SD-200BA</b>
		Approved: PAVEMENT MANAGEMENT BRANCH				

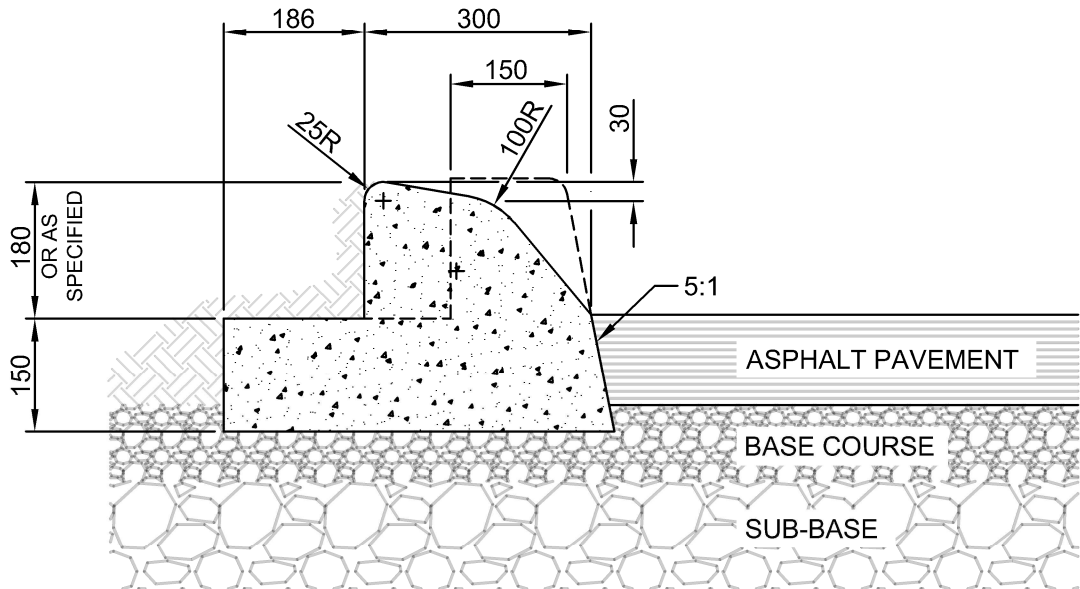


NOTES:

1. TRANSVERSE SAW CUT EVERY 3m OR AT PAVEMENT JOINTS
2. TRANSVERSE SAW CUTS ARE TO BE A MAXIMUM DEPTH OF 25mm
3. FOR CONSTRUCTION JOINTS INSTALL TWO 19.1mm DOWELS 450 LONG; LUBRICATED WITH ASPHALTIC CUT-BACK. REF SD-200AA.

DIMENSIONS IN MILLIMETRES


	<b>THE CITY OF WINNIPEG</b> PUBLIC WORKS DEPARTMENT		Revisions		
Reference Spec. No. CW 3325					
<b>75 mm LIP CURB WITH          INTEGRAL APPROACH          FOR ASPHALT PAVEMENT</b>		No.	Date	Description	By
		Designed By: A.G.	Drawn By: T.K.	Scale : <b>N.T.S</b>	
		Checked By: B.K.	Date: 2025-01-31	Drawing No. <b>SD-202CA</b>	
		Approved: PAVEMENT MANAGEMENT BRANCH			

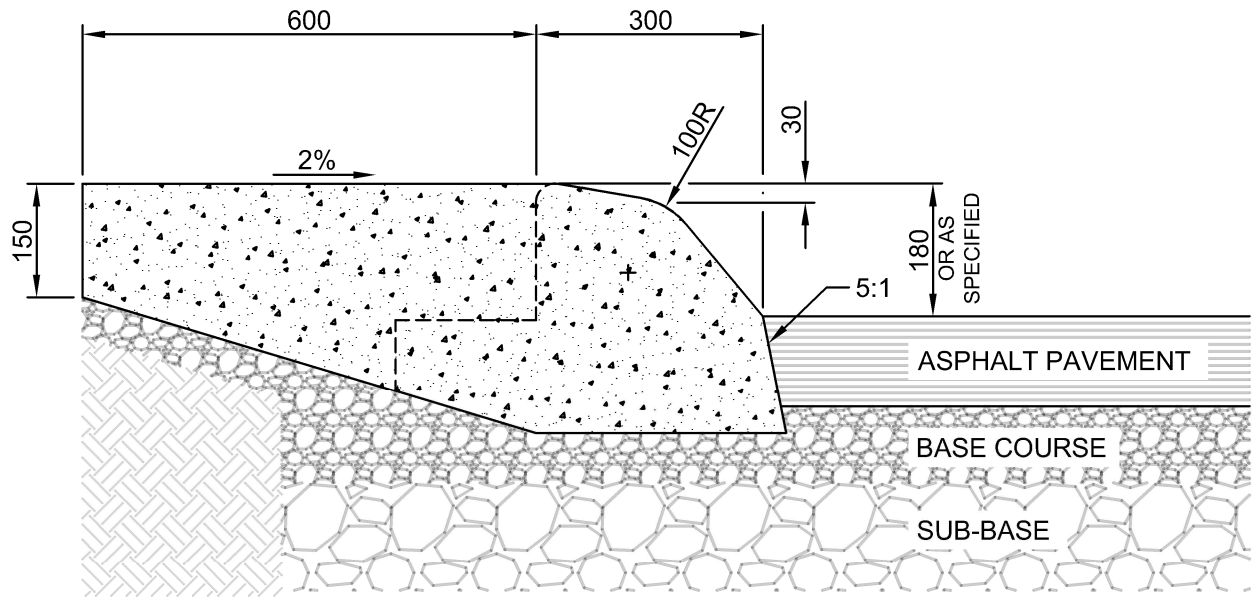


NOTES:

1. TRANSVERSE SAW CUT EVERY 3m OR AT PAVEMENT JOINTS
2. TRANSVERSE SAW CUTS ARE TO BE A MAXIMUM DEPTH OF 25mm
3. FOR CONSTRUCTION JOINTS INSTALL TWO 19.1mm DOWELS 450 LONG; LUBRICATED WITH ASPHALTIC CUT-BACK. REF SD-200AA.

DIMENSIONS IN MILLIMETRES


 <b>THE CITY OF WINNIPEG</b> PUBLIC WORKS DEPARTMENT	Revisions		
Reference Spec. No. CW 3325			
<b>MODIFIED BARRIER CURB          WITH REVERSED GUTTER          FOR ASPHALT PAVEMENT</b>	No.	Date	Description
	Designed By: A.G.	Drawn By: T.K.	Scale : <b>N.T.S</b>
	Checked By: B.K.	Date: 2025-01-31	Drawing No. <b>SD-203CA</b>
	Approved: PAVEMENT MANAGEMENT BRANCH		



NOTES:

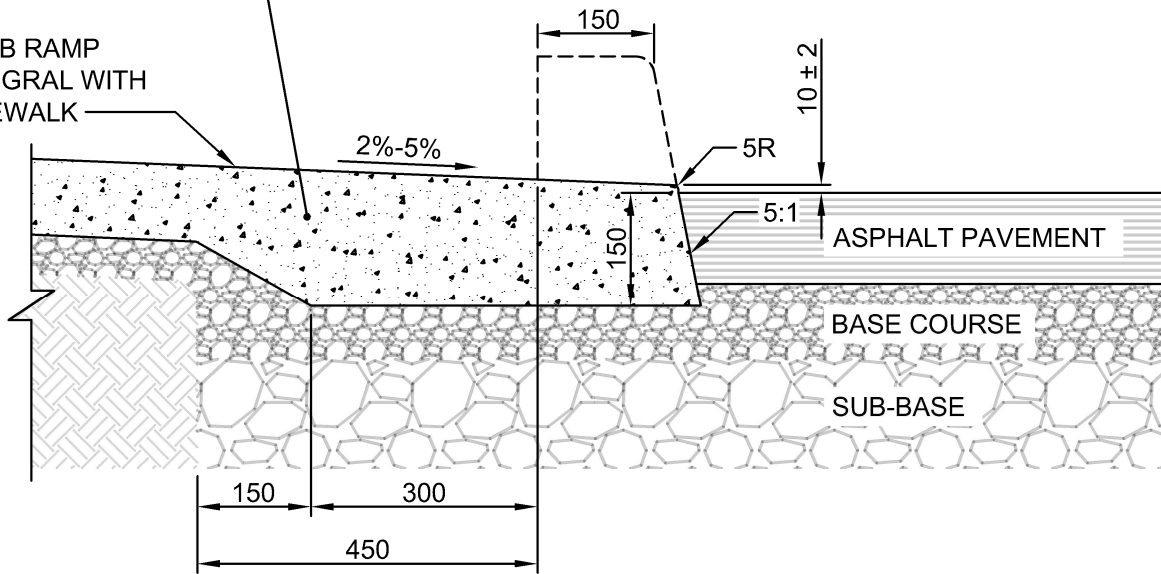
1. TRANSVERSE SAW CUT EVERY 3m OR AT PAVEMENT JOINTS
2. TRANSVERSE SAW CUTS ARE TO BE A MAXIMUM DEPTH OF 25mm
3. FOR CONSTRUCTION JOINTS INSTALL TWO 19.1mm DOWELS 450 LONG; LUBRICATED WITH ASPHALTIC CUT-BACK. REF SD-200AA.

DIMENSIONS IN MILLIMETRES

 <b>THE CITY OF WINNIPEG</b> PUBLIC WORKS DEPARTMENT	Revisions		
Reference Spec. No. CW 3325			
<b>MODIFIED BARRIER CURB WITH          INTEGRAL SPLASH STRIP FOR          ASPHALT PAVEMENT</b>	No.	Date	Description
	Designed By: A.G.	Drawn By: T.K.	Scale : <b>N.T.S</b>
	Checked By: B.K.	Date: 2025-01-31	Drawing No. <b>SD-203DA</b>
	Approved: PAVEMENT MANAGEMENT BRANCH		

EXISTING OR  
PROPOSED SIDEWALK

CURB RAMP  
INTEGRAL WITH  
SIDEWALK



NOTES:

1. TRANSVERSE SAW CUT EVERY 3m OR AT PAVEMENT JOINTS
2. TRANSVERSE SAW CUTS ARE TO BE A MAXIMUM DEPTH OF 25mm

DIMENSIONS IN MILLIMETRES



**THE CITY OF WINNIPEG**  
PUBLIC WORKS DEPARTMENT

Reference Spec. No.  
CW 3325

Revisions

No.	Date	Description	By

**CURB RAMP FOR  
ASPHALT PAVEMENT**

Designed By:  
A.G.

Drawn By:  
T.K.

Scale :  
**N.T.S**

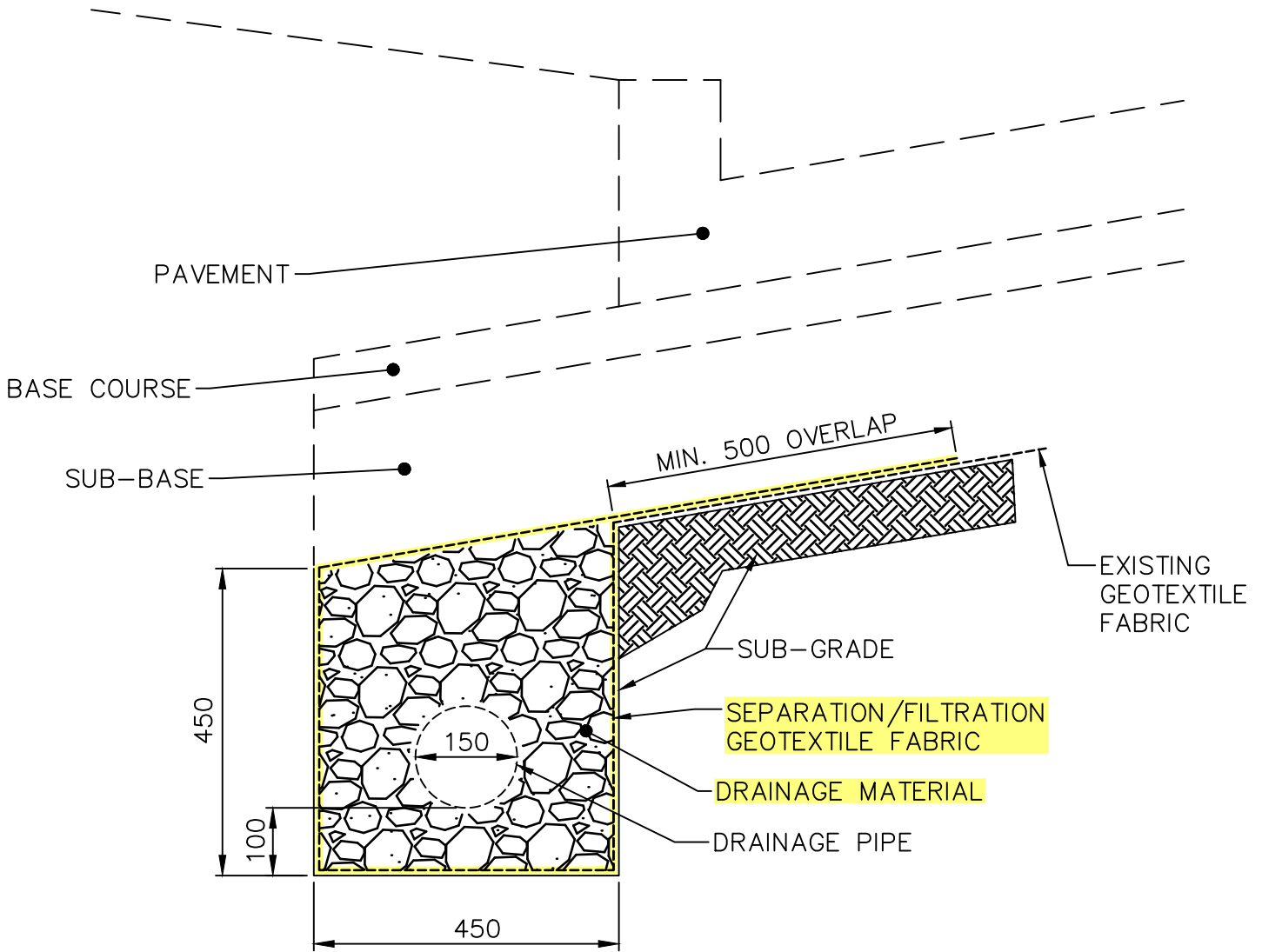
Checked By:  
B.K.

Date:  
2025-01-31

Drawing No.

Approved:  
PAVEMENT MANAGEMENT BRANCH

**SD-229FA**



DIMENSIONS IN MILLIMETRES



**THE CITY OF WINNIPEG**  
PUBLIC WORKS DEPARTMENT

Reference Spec. No.  
CW 3110, CW 3120, CW 3130

Revisions			
No.	Date	Description	By
1.	OCT 24	GENERAL REVISION	R.B.

SUBDRAIN INSTALLATION  
DETAIL

Designed By: A.G.	Drawn By: R.B.	Scale : N.T.S.
Checked By: B.K.	Date: 2024-10-01	Drawing No. SD-245
Approved: PAVEMENT MANAGEMENT BRANCH		