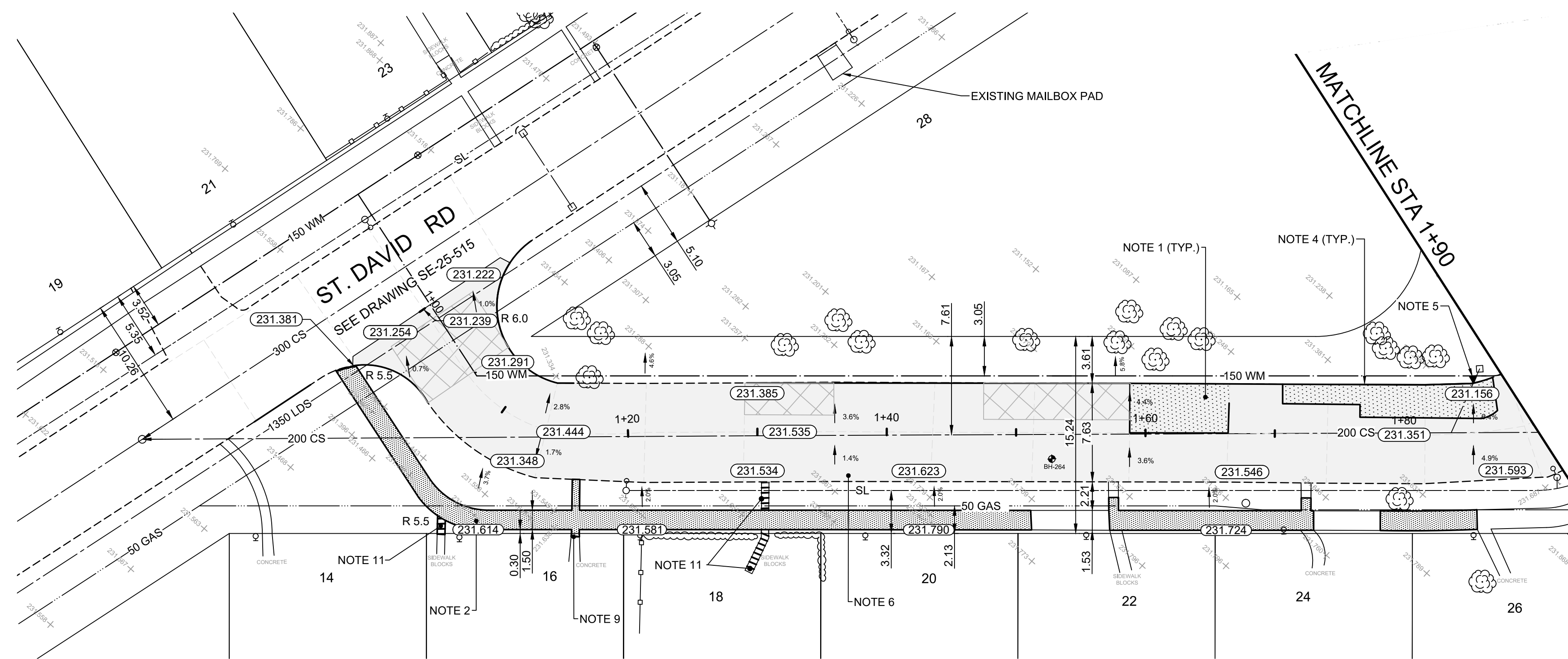


- CONSTRUCTION NOTES**
1. REMOVE EXISTING PAVEMENT AND CONSTRUCT NEW 150mm REINFORCED CONCRETE PAVEMENT
 2. CONSTRUCT NEW 100mm CONCRETE SIDEWALK (SD-228A, SD-228AA)
 3. REMOVE EXISTING CURB AND CONSTRUCT NEW CONCRETE MONOLITHIC CURB AND SIDEWALK (SD-228B)
 4. REMOVE EXISTING CURB AND CONSTRUCT NEW BARRIER CURB (SD-205)
 5. REMOVE EXISTING CURB INLET AND INSTALL NEW CURB INLET FRAME WITH INLET BOX AND COVER, CONNECT TO EXISTING CATCH BASIN (SD-222)
 6. CONSTRUCT NEW 80mm (TYP.) ASPHALT PAVEMENT OVERLAY (TYPE MS1)
 7. CONSTRUCT NEW CURB RAMP (SD-229D)
 8. ADJUST FRAME AND COVER TO GRADE AS PER CW 3210
 9. REPLACE 100mm CONCRETE PRIVATE WALK
 10. RE-GRADE EXISTING PAVING STONES
 11. RE-GRADE EXISTING PRECAST CONCRETE SIDEWALK BLOCKS



- GENERAL NOTES**
- A. PAVEMENT DIMENSIONS ARE TO BACK OF CURB
 - B. ALL CURB RADI UNDER 15.0m SHALL BE MODIFIED (SD-203B)
 - C. CURB REPLACEMENT AS DIRECTED BY CONTRACT ADMINISTRATOR
 - D. CONTRACTOR TO CONFIRM THE LOCATION OF ALL UTILITIES/SERVICES IN THE FIELD PRIOR TO CONSTRUCTION
 - E. ADJUST ALL EXISTING WATER VALVES AND CURB STOPS TO GRADE
 - F. PAVEMENT REPAIRS SHOWN ARE A REPRESENTATIVE SAMPLE OF THE TENDER QUANTITIES
 - G. ASPHALT TIE-INS ON APPROACHES TO BE DETERMINED IN FIELD BY THE CONTRACT ADMINISTRATOR

ISSUED FOR TENDER
NOT TO BE USED FOR CONSTRUCTION

METRIC
WHOLE NUMBERS INDICATE MILLIMETERS
DECIMALIZED NUMBERS INDICATE METERS

TENDER NO. 13-2025

EXISTING	LEGEND - PLAN	PROPOSED	EXISTING	LEGEND - PLAN	PROPOSED	EXISTING	LEGEND - PROFILE	PROPOSED
	HYDRANT			FLOW ARROW			BOREHOLE LOCATION	
	VALVE			LDS/WWS			CONCRETE	
	CURB STOP			WATERMAIN			CONCRETE SIDEWALK	
	MANHOLE			GAS			ASPHALT	
	CATCH BASIN			TRAFFIC SIGNALS			GRAVEL	
	CATCH PIT/CURB INLET			HYDRO/STREET LIGHT			BRICK	
	HYDRO POLE			MTS/SHAW			PAVEMENT REPAIR FABRIC	
	LIGHT STANDARD			CURB RENEWAL			FENCE	
	UTILITY BOX			PROPERTY LINE			WEST GUTTER	
	UTILITY MAN HOLE			RAMP CURB			CENTER LINE	
	SURVEY BAR			ELEVATIONS			EAST GUTTER	
	SHRUBS			TREE				

LOCATION APPROVED
UNDERGROUND STRUCTURES

DATE: _____

NOTE:
LOCATION OF UNDERGROUND STRUCTURES AS SHOWN ARE BASED ON THE BEST INFORMATION AVAILABLE. BUT NO GUARANTEE IS GIVEN THAT ALL EXISTING UTILITIES ARE SHOWN OR THAT THE GIVEN LOCATIONS ARE EXACT. CONFIRMATION OF EXISTENCE AND EXACT LOCATION OF ALL SERVICES MUST BE OBTAINED FROM THE INDIVIDUAL UTILITIES BEFORE PROCEEDING WITH CONSTRUCTION.

NO.	REVISIONS	DATE	BY
2.	ISSUED FOR TENDER	2025/03/13	J.W.
1.	SUBMIT FOR PLAN APPROVAL	2025/02/07	J.W.

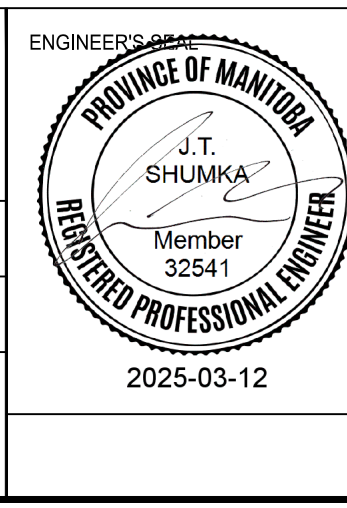
ENGINEERING DIVISION
TECHNOLOGY SERVICES BRANCH
106 - 1155 PACIFIC AVE

DESIGNED BY: J.W. CHECKED BY: A.K., E.H., R.W.

DRAWN BY: J.W. APPROVED BY: J.T.S.

HOR. SCALE: 1 : 250
VERTICAL: 1 : 10

DATE: 2025/03/07



THE CITY OF WINNIPEG
PUBLIC WORKS DEPARTMENT

ST DAVID PLACE
FROM ST DAVID RD TO ST DAVID RD
CONCRETE PAVEMENT REHABILITATION AND ASSOCIATED WORKS
FROM STA. 1+00 TO STA. 1+90

CITY DRAWING NUMBER: SE-25-512
SHEET 13 OF 25
1