

Copyright Reserved

The Contractor shall verify and be responsible for all dimensions. DO NOT scale the drawing - any errors or omissions shall be reported to Stantec without delay. The Copyrights to all designs and drawings are the property of Stantec. Reproduction or use for any purpose other than that authorized by Stantec is forbidden.

Consultants

Legend

1	ISSUED FOR ADDENDUM #6	CB	AA	25.08.15
Revision		By	Appd.	YY.MM.DD

ISSUED FOR CONSTRUCTION	CB	AA	25.06.04
Issued	By	Appd.	YY.MM.DD

File Name:		Dwn.	Chkd.	Dsgn.	YY.MM.DD
------------	--	------	-------	-------	----------

Permit-Seal

**ENGINEERS
GEOSCIENTISTS
MANITOBA**
Certificate of Authorization
Stantec Consulting Ltd.
No. 1301

Client/Project
WINNIPEG TRANSIT MAINTENANCE FACILITY
OFFICE REDEVELOPMENT

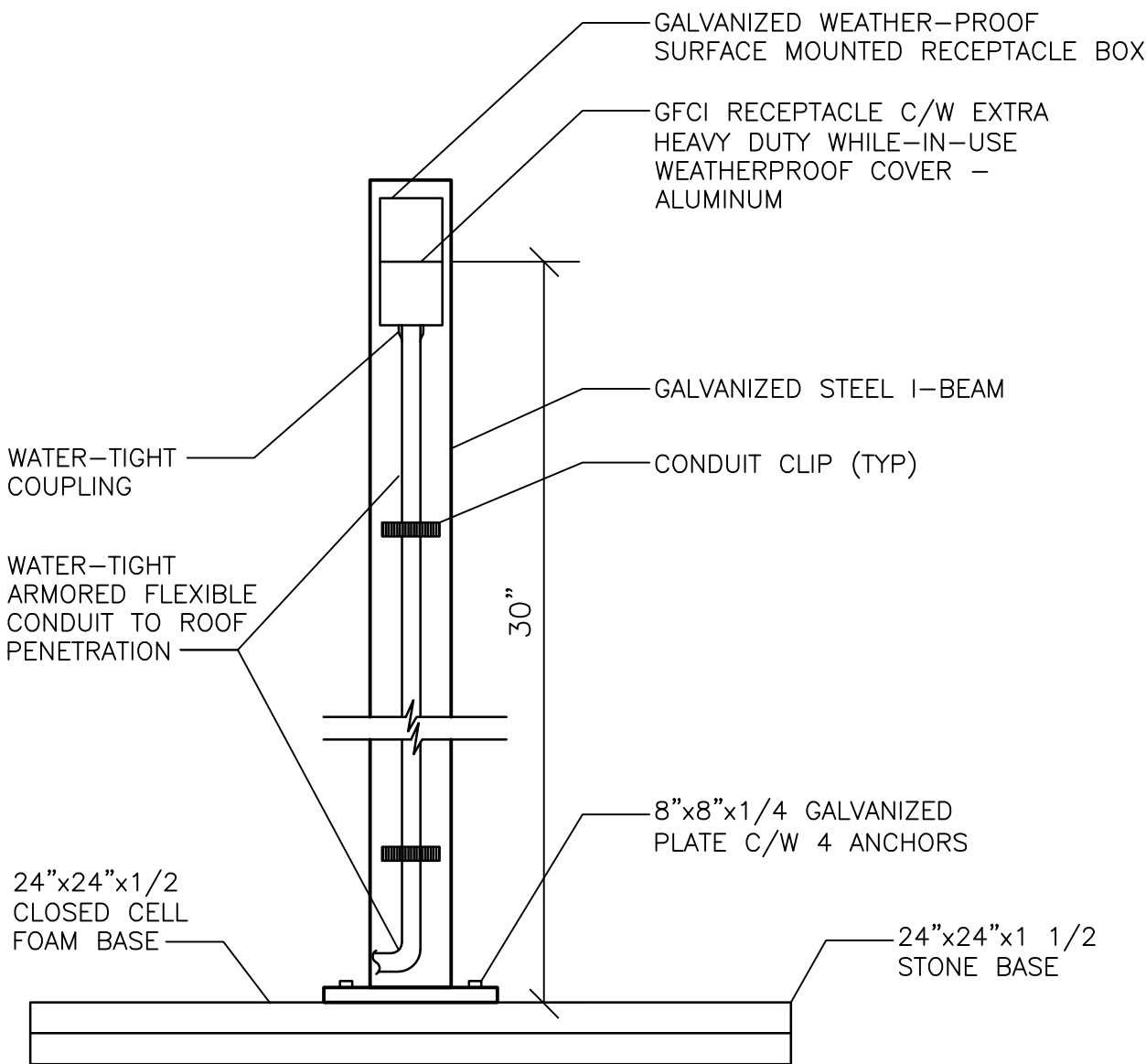
421 OSBORNE ST. SOUTH, WINNIPEG, MB

Title
ELECTRICAL DETAILS

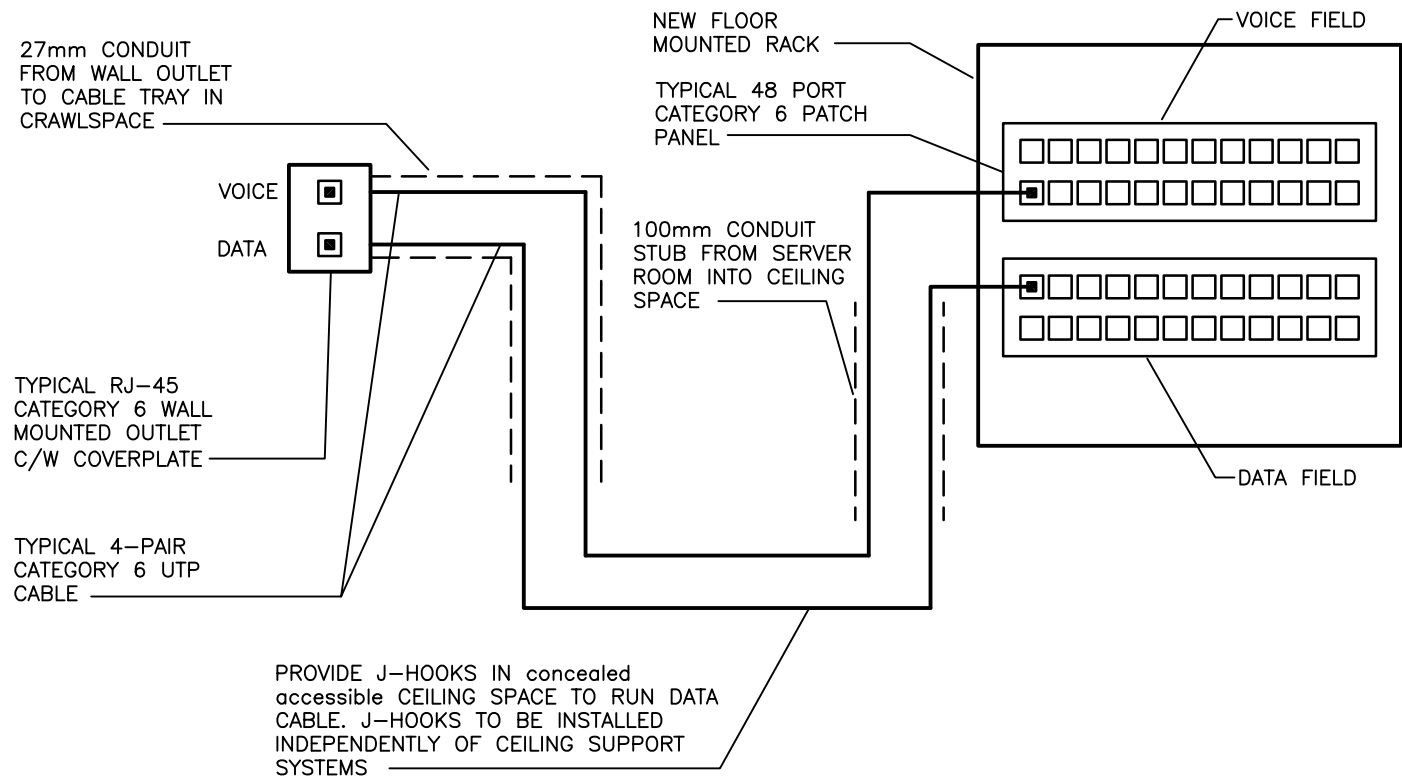
Project No.	Scale
115421006	1/8"=1'-0"

Drawing No.	Sheet	Revision
-------------	-------	----------

E-302 14 of 17 1



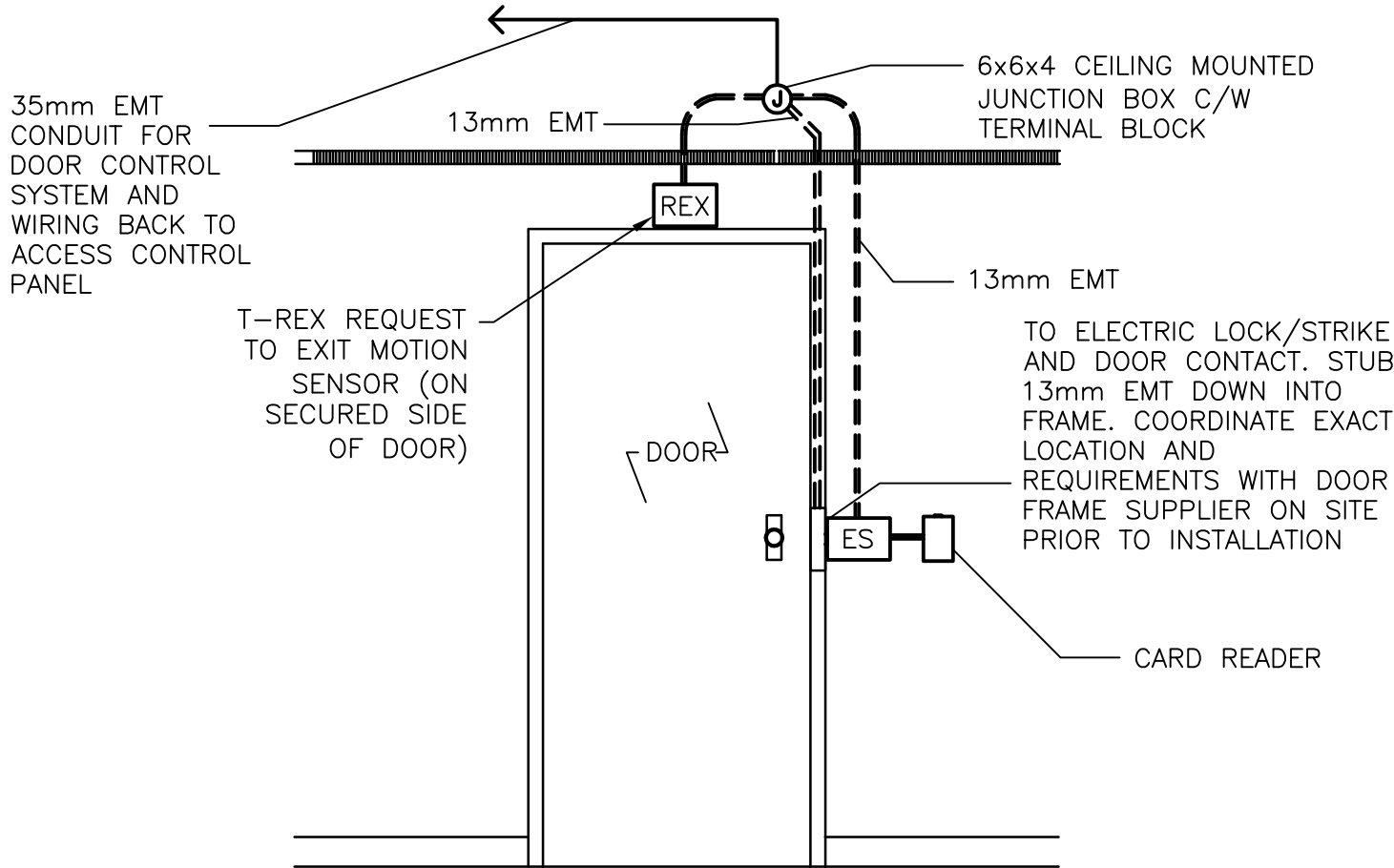
1 ROOFTOP PEDESTAL MOUNTED RECEPTACLE
E-302 NTS



3 VOICE/DATA COMMUNICATION RISER DIAGRAM
E-301 NTS

NOTE:

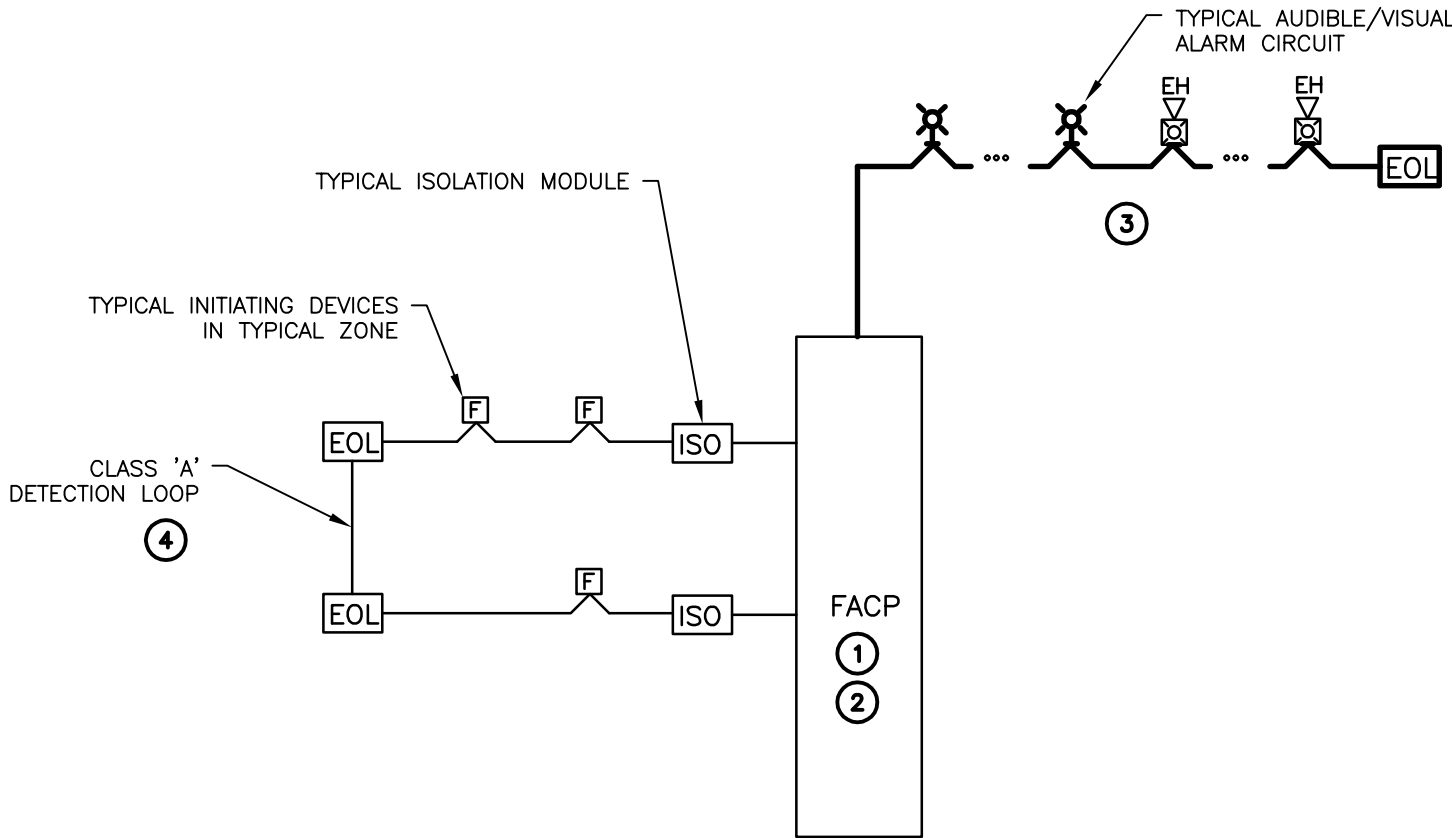
- ALL COMMUNICATION LINES ARE TO BE TESTED BY A CERTIFIED INSTALLER FOR CATEGORY 6. PERFORMANCE UPON COMPLETION OF INSTALLATION. A TESTING REPORT IS TO BE PROVIDED.
- CONTRACTOR TO SUPPLY PATCH CORDS FOR ALL CONNECTED EQUIPMENT AND ONE PATCH CORD FOR EACH DATA JACK. PATCH CORD TO BE 6'.



2 TYPICAL DOOR HARDWARE DETAIL
E-301 NTS

NOTES:

- COORDINATE REQUIREMENTS WITH DOOR HARDWARE EQUIPMENT SUPPLIER. CONTRACTORS TO PROVIDE COMMUNICATION CABLE IN CONDUIT BETWEEN CARD ACCESS CONTROL PANEL. CITY OF WINNIPEG TO PROVIDE AND INSTALL ACCESS CONTROL EQUIPMENT.
- CONTRACTOR RESPONSIBLE FOR PROVIDING CONDUIT AND WIRING TO ACCESS CONTROL SYSTEM.
- REFER TO WINNIPEG TRANSIT MASTER SECURITY STANDARD 2024 UPDATED V8 FOR ADDITIONAL DETAILS.



4 FIRE ALARM SYSTEM RISER DIAGRAM
E-301 NTS

KEY NOTES:

- ALL NEW DEVICES TO MATCH EXISTING SIEMENS (NOTIFIER) FIRE ALARM SYSTEM.
- PROVIDE BOOSTER PANELS AS REQUIRED TO ACCOMMODATE FIRE ALARM ANNUNCIATION DEVICES. CONNECT EACH BOOSTER PANEL TO A DEDICATED 120V, 15A-1P RED BREAKER C/W LOCK-ON DEVICE. COORDINATE LOCATION OF BOOSTER PANELS WITH THE OWNER PRIOR TO ROUGH-IN.
- PROVIDE NEW SIGNALING DEVICES AND CONNECT TO EXISTING FIRE ALARM SYSTEM AS SHOWN. PROVIDE VERIFICATION INSPECTION REPORT FOR ALL NEW AND RELOCATED DEVICES.
- PROVIDE DEDICATED NOTIFICATION LOOP FOR EACH OF THE TWO RENOVATION AREAS.