

Stantec Consulting Ltd.
Suite 500, 311 Portage Avenue
Winnipeg MB Canada R3B 2B9
Tel. 204.489.5900 Fax. 204.453.9012
www.stantec.com

Copyright Reserved

The Contractor shall verify and be responsible for all dimensions.
DO NOT scale the drawing - any errors or omissions shall be reported to Stantec without delay.
The Copyrights to all designs and drawings are the property of Stantec. Reproduction or use for any purpose other than that authorized by Stantec is forbidden.

Consultants

Legend

Revision	By	Appd.	YY.MM.DD
ISSUED FOR CONSTRUCTION	TL	CJE	2025.06.04
Issued	By	Appd.	YY.MM.DD

File Name:			
	Dwn.	Chkd.	Dsgn.
			YY.MM.DD

Permit-Seal

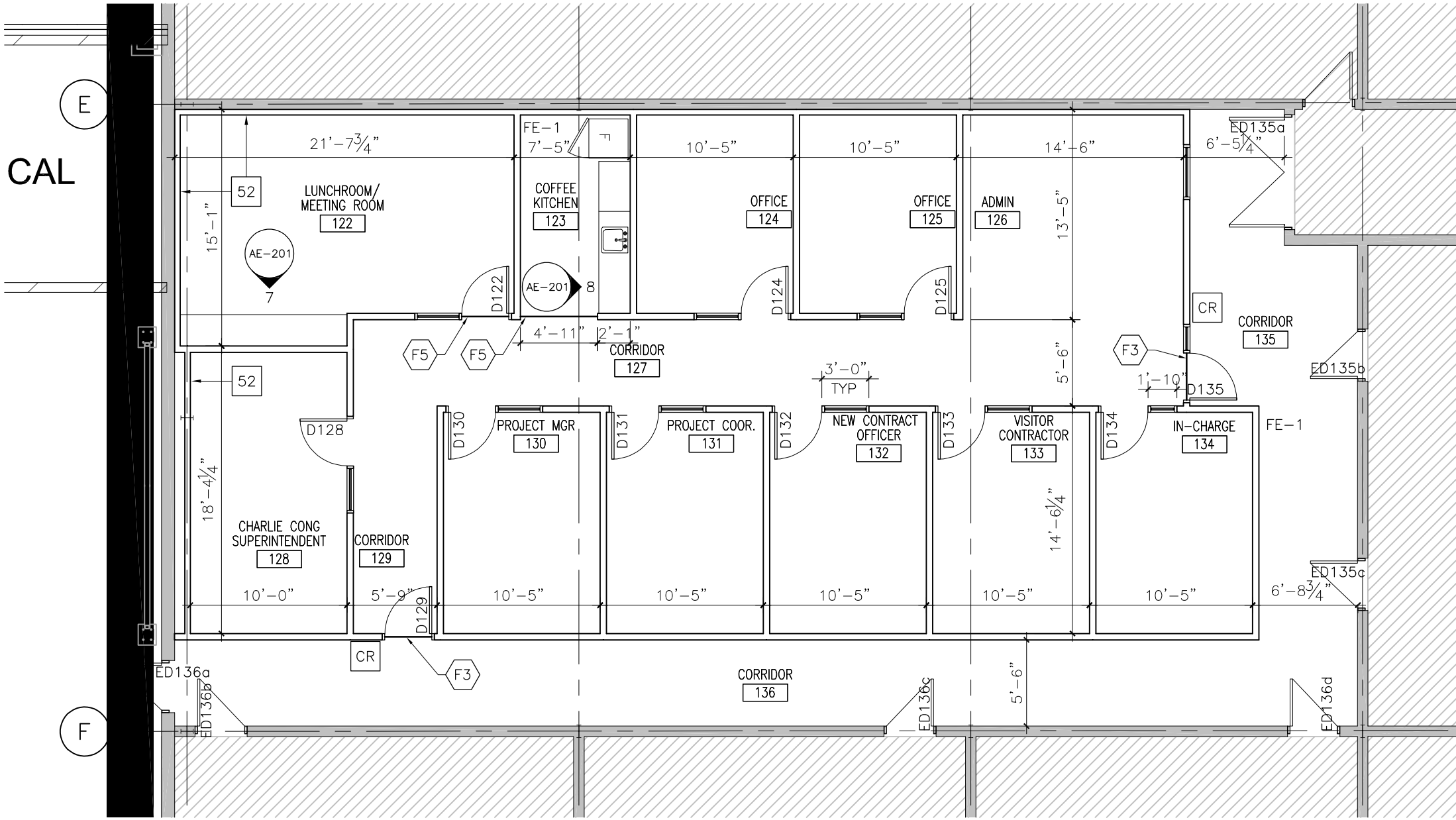


Client/Project
WINNIPEG TRANSIT MAINTENANCE FACILITY
OFFICE REDEVELOPMENT

DEPARTMENT:
FACILITIES CONTRACTS AND MAINTENANCE
421 OSBORNE ST. SOUTH, WINNIPEG, MB

Title
FLOOR PLAN

Project No. 115421006	Scale 1/8"=1'-0"	
Drawing No. AE-102	Sheet of	Revision 0



1 FLOOR PLAN
AE-102 SCALE: 1/8"=1'-0" N

INTERIOR PARTITION TYPES

-ALL INTERIOR PARTITION TO BE 50 UNLESS NOTED OTHERWISE
-ALL INTERIOR PARTITIONS THAT ARE NOT TO U/S OF STRUCTURE MUST BE BRACED TO U/S STRUCTURE FROM ABOVE THE CEILING, UNLESS NOTED OTHERWISE

PARTITION FROM FLOOR TO 12'-0" A.F.F.
50 -5/8" GYPSUM BOARD
-3 5/8" STEEL STUDS @16" O/C
-ACOUSTIC BATT INSULATION
-5/8" GYPSUM BOARD

2 HR FIRE RATED PARTITION FROM FLOOR TO U/S DECK
51 -2 LAYERS OF 5/8" TYPE X GYPSUM BOARD
-6" STEEL STUDS @16" O/C (18 GA.)
-ACOUSTIC BATT INSULATION
-2 LAYERS OF 5/8" TYPE X GYPSUM BOARD

PARTITION FROM FLOOR TO U/S DECK
52 -5/8" GYPSUM BOARD
-6" STEEL STUDS @16" O/C (18 GA.)
-ACOUSTIC BATT INSULATION
-5/8" GYPSUM BOARD

PARTITION FROM FLOOR TO 10'-0" A.F.F.
53 -5/8" GYPSUM BOARD
-3 5/8" STEEL STUDS @16" O/C
-ACOUSTIC BATT INSULATION

FLOOR PLAN KEYNOTES

- F1 6" X 6" COLUMN
- F2 COAT HOOKS
- F3 TRANSITION - CARPET TO CONCRETE
- F4 REDUCER - RSF TO CONCRETE
- F5 TRANSITION - RSF TO CARPET
- F6 WRITABLE PAINT (LEVEL 5 FINISH)