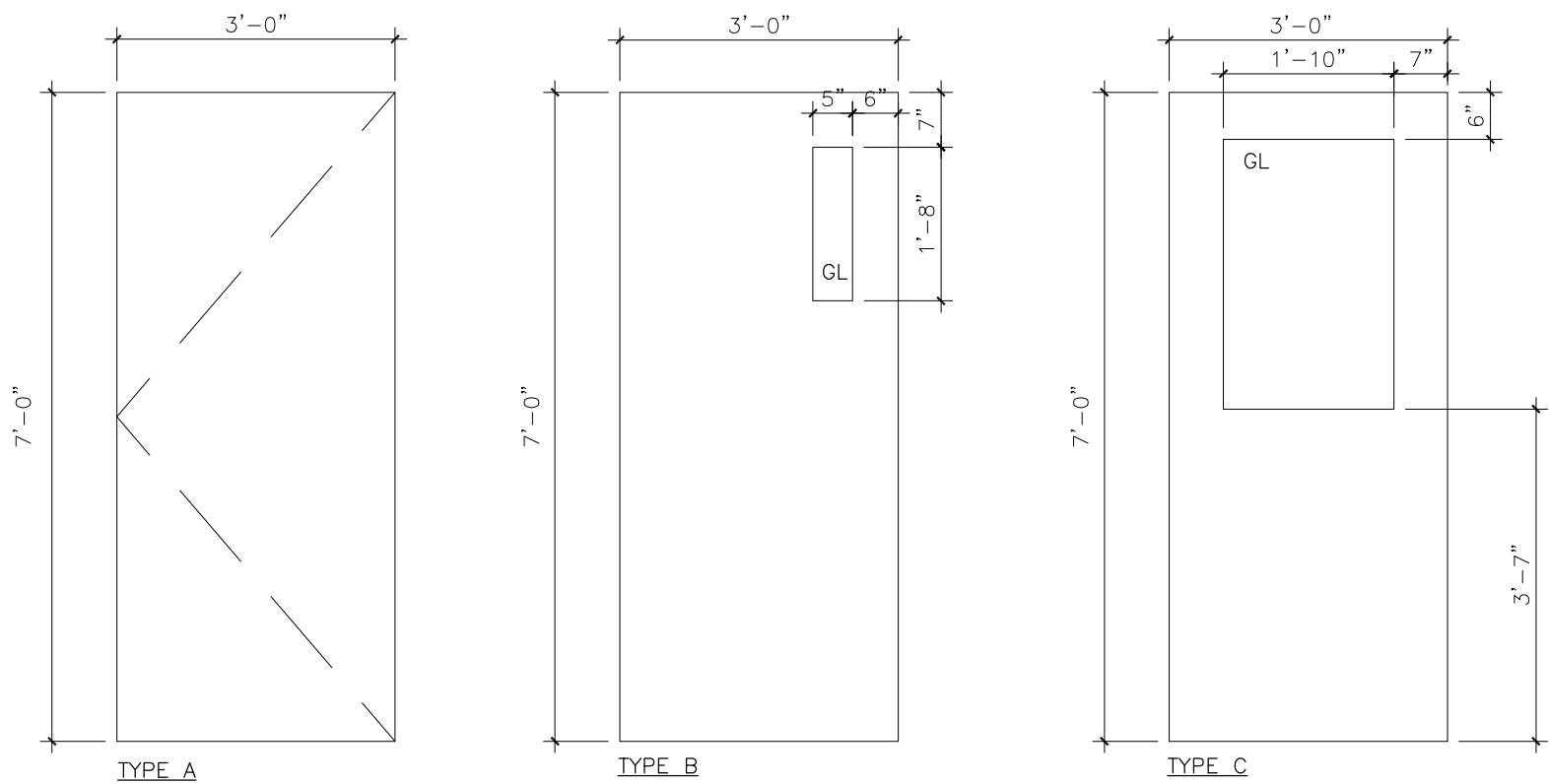


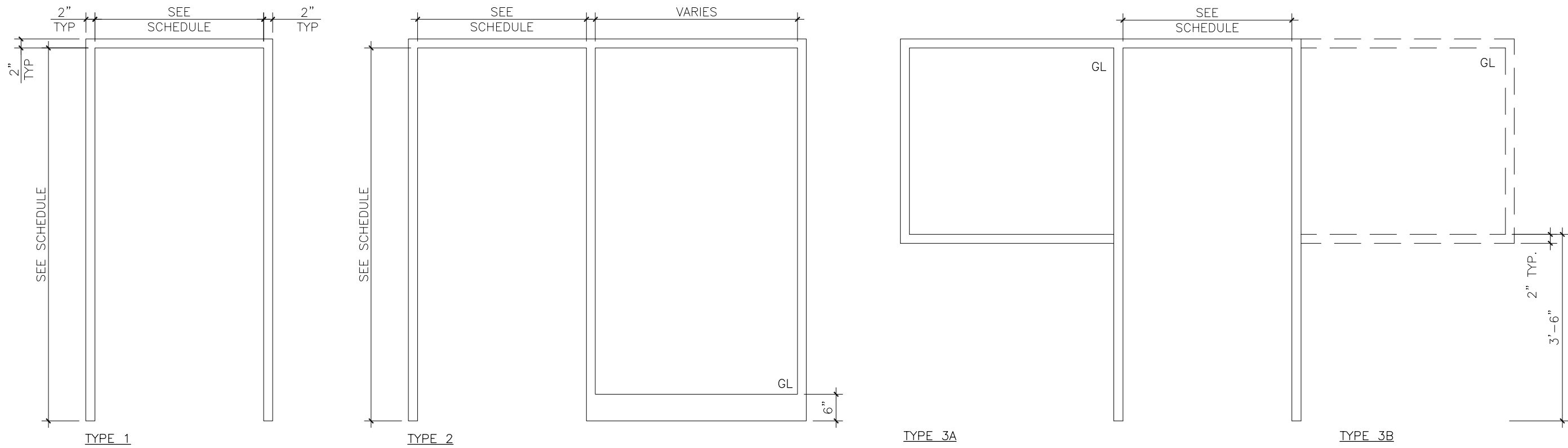
U:\115421006\02_WORKING_FILES\04_ARCHITECTURE\02_CAD\03_SHEETS\21006A_AE-701.DWG
6/4/2025 2:20 PM

ORIGINAL SHEET - ARCH C

DOOR TYPES



FRAME TYPES



Stantec Consulting Ltd.
Suite 500, 311 Portage Avenue
Winnipeg MB Canada R3B 2B9
Tel. 204.489.5900 Fax. 204.453.9012
www.stantec.com

Copyright Reserved

The Contractor shall verify and be responsible for all dimensions.
DO NOT scale the drawing - any errors or omissions shall be reported to Stantec without delay.
The Copyrights to all designs and drawings are the property of Stantec. Reproduction or use for any purpose other than that authorized by Stantec is forbidden.

Consultants

Legend

Revision	By	Appd.	YY.MM.DD
ISSUED FOR CONSTRUCTION	TL	CJE	2025.06.04
Issued	By	Appd.	YY.MM.DD

File Name:				
	Dwn.	Chkd.	Dsgn.	YY.MM.DD

Permit-Seal



Client/Project
WINNIPEG TRANSIT MAINTENANCE FACILITY
OFFICE REDEVELOPMENT

421 OSBORNE ST. SOUTH, WINNIPEG, MB

Title
DOOR AND FRAME TYPES

Project No. 115421006	Scale NTS	
Drawing No. AE-701	Sheet of	Revision 0