

Stantec Consulting Ltd.
Suite 500, 311 Portage Avenue
Winnipeg MB Canada R3B 2B9
Tel. 204.489.5900 Fax. 204.453.9012
www.stantec.com

Copyright Reserved

The Contractor shall verify and be responsible for all dimensions.
DO NOT scale the drawing - any errors or omissions shall be reported to Stantec without delay.
The Copyrights to all designs and drawings are the property of Stantec. Reproduction or use for any purpose other than that authorized by Stantec is forbidden.

Consultants

Legend

Revision	By	Appd.	YY.MM.DD
ISSUED FOR CONSTRUCTION	CB	AA	25.06.04
Issued	By	Appd.	YY.MM.DD
File Name:			
	Dwn.	Chkd.	Dsgn. YY.MM.DD

Permit-Seal



**ENGINEERS
GEOSCIENTISTS
MANITOBA**
Certificate of Authorization
Stantec Consulting Ltd.
No. 1301

Client/Project
WINNIPEG TRANSIT MAINTENANCE FACILITY
OFFICE REDEVELOPMENT

421 OSBORNE ST. SOUTH, WINNIPEG, MB

Title
PARTIAL FLOOR PLAN - LIGHTING -
DEMOLITION

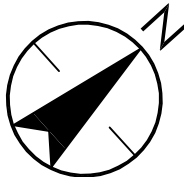
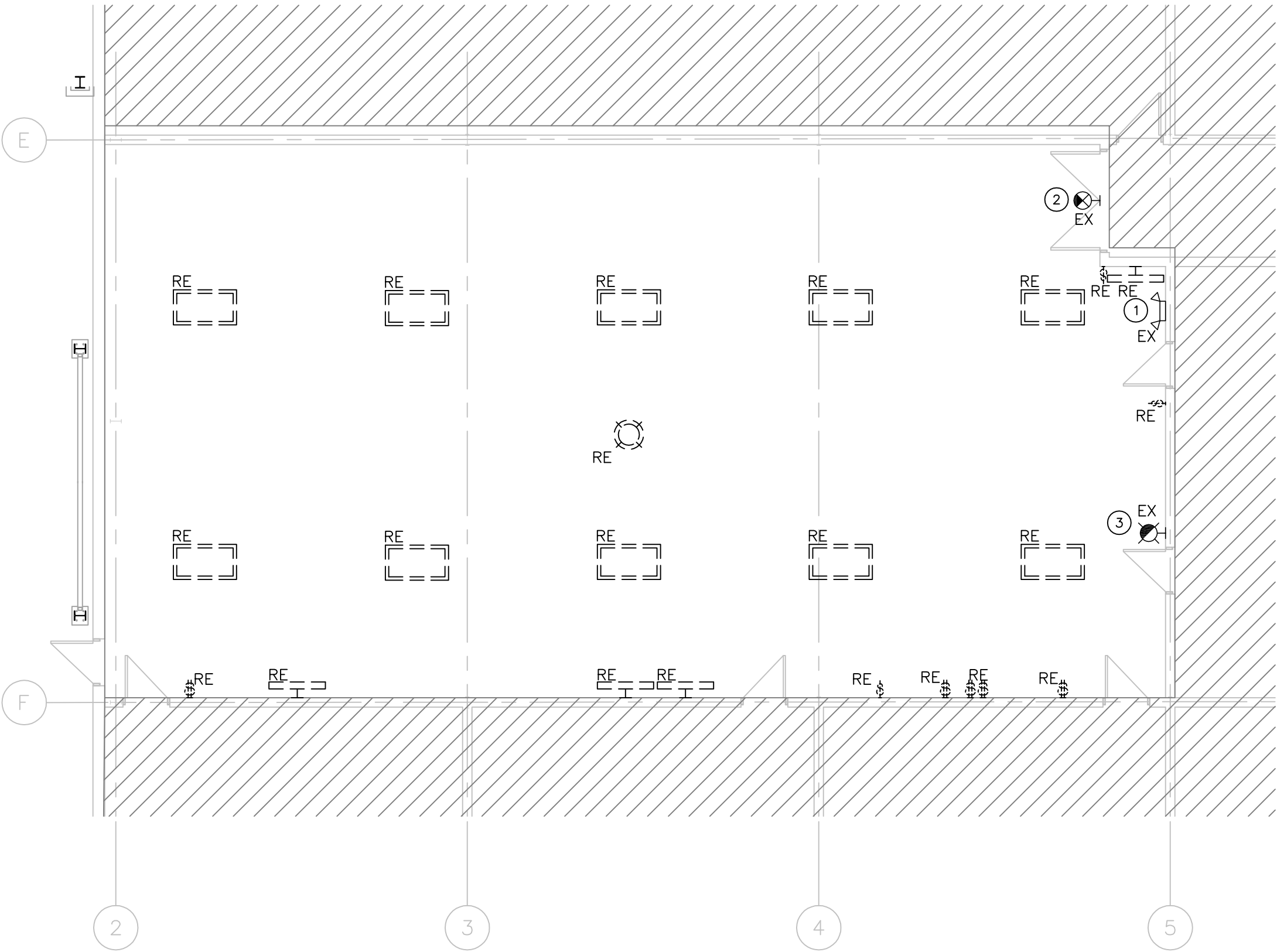
Project No. 115421006	Scale 1/8"=1'-0"	Revision 0
Drawing No. E-101	Sheet 3 of 18	

GENERAL NOTES:

- DISCONNECT AND REMOVE EXISTING LIGHT FIXTURE. REMOVE WIRE AND CONDUIT BACK TO SOURCE.TURN LED FIXTURES OVER TO OWNER.
- DISCONNECT AND REMOVE EXISTING LIGHT SWITCH NO LONGER IN USE. REMOVE WIRE AND CONDUIT BACK TO SOURCE.

KEY NOTES:

- EXISTING BATTERY BANK TO REMAIN.
- EXISTING EXIT SIGN TO REMAIN.
- EXISTING WALL MOUNTED INDICATOR LIGHT TO REMAIN.



1
E-101
PARTIAL FLOOR PLAN – LIGHTING – DEMOLITION
1/8" = 1'-0"