

Copyright Reserved

The Contractor shall verify and be responsible for all dimensions.  
DO NOT scale the drawing - any errors or omissions shall be reported to Stantec without delay.  
The Copyrights to all designs and drawings are the property of Stantec. Reproduction or use for any purpose other than that authorized by Stantec is forbidden.

Consultants

Legend

Revision

ISSUED FOR CONSTRUCTION  
Issued

File Name:

Permit-Seal



**ENGINEERS  
GEOSCIENTISTS  
MANITOBA**  
Certificate of Authorization  
Stantec Consulting Ltd.  
No. 1301

Client/Project

WINNIPEG TRANSIT MAINTENANCE FACILITY  
OFFICE REDEVELOPMENT

421 OSBORNE ST. SOUTH, WINNIPEG, MB

Title

PARTIAL FLOOR PLAN - LIGHTING -  
DEMOLITION

Project No.  
115421006

Scale  
1/8"=1'-0"

Drawing No.

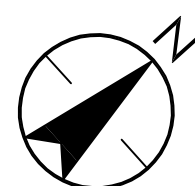
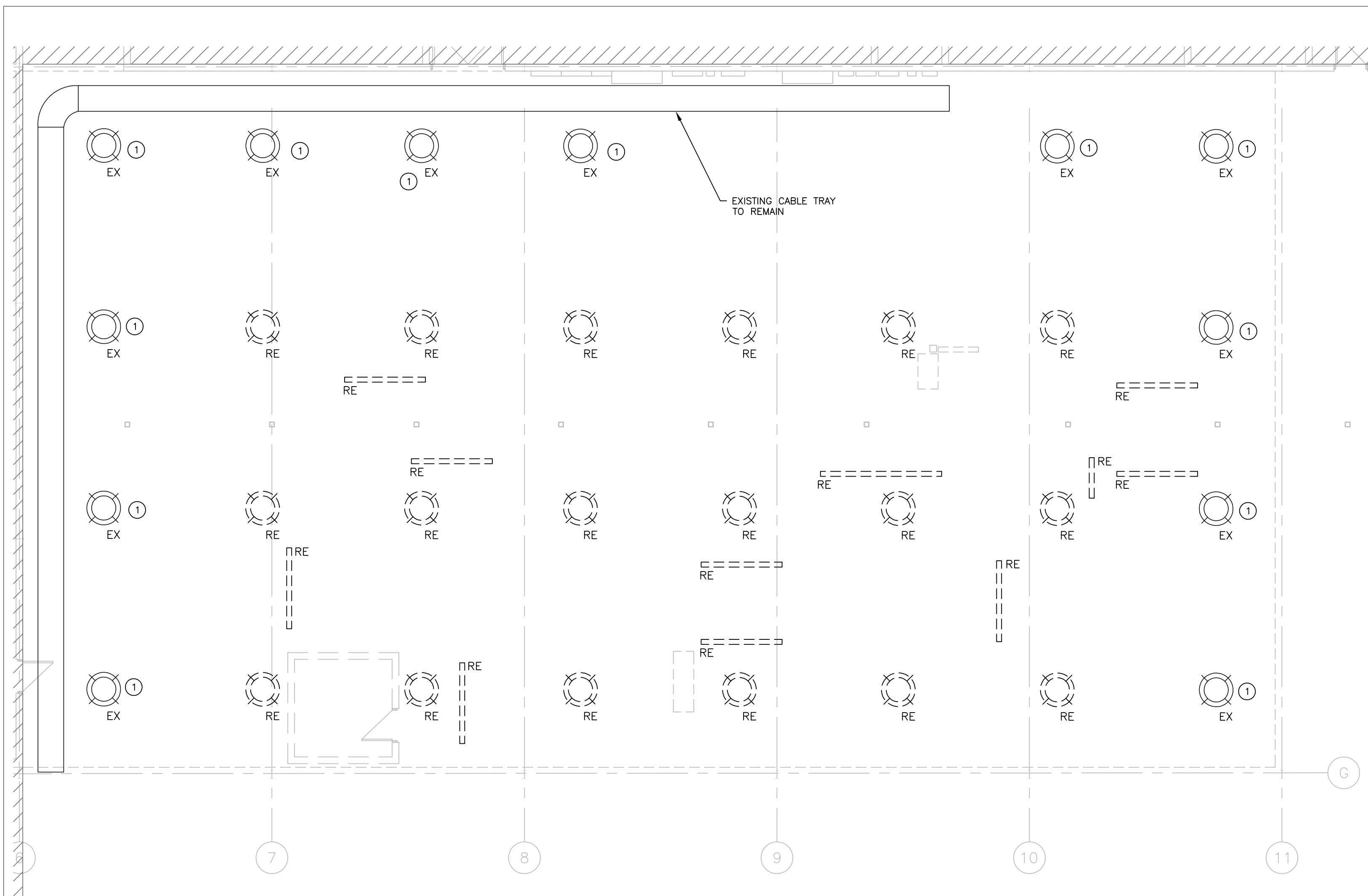
Sheet

Revision

E-102

4 of 18

0



**1**  
E-102 PARTIAL FLOOR PLAN – LIGHTING – DEMOLITION  
1/8" = 1'-0"

**GENERAL NOTES:**

1. DISCONNECT AND REMOVE EXISTING HIGH BAY FIXTURE, REMOVE WIRE AND CONDUIT BACK TO NEAREST SOURCE.
2. DISCONNECT AND REMOVE EXISTING SUSPENDED LIGHT FIXTURES IN THE AREA, REMOVE WIRE AND CONDUIT TO NEAREST SOURCE.

**KEY NOTES:**

1. CONTRACTOR TO ALLOW FOR EXISTING LIGHT FIXTURES TO BE RELOCATED TO SUIT NEW OFFICE LAYOUT. SHOULD LIGHT FIXTURES NOT INTERFERE WITH NEW OFFICE WALLS, LIGHT FIXTURES TO REMAIN IN EXISTING LOCATION.