

Copyright Reserved

The Contractor shall verify and be responsible for all dimensions.
DO NOT scale the drawing - any errors or omissions shall be
reported to Stantec without delay.
The Copyrights to all designs and drawings are the property of
Stantec. Reproduction or use for any purpose other than that
authorized by Stantec is forbidden.

Consultants

Legend

Revision	By	Appd.	YY.MM.DD
ISSUED FOR CONSTRUCTION	CB	AA	25.06.04
Issued	By	Appd.	YY.MM.DD

File Name:			
	Dwn.	Chkd.	Dsgn.
			YY.MM.DD

Permit-Seal



**ENGINEERS
GEOSCIENTISTS
MANITOBA**
Certificate of Authorization
Stantec Consulting Ltd.
No. 1301

Client/Project
WINNIPEG TRANSIT MAINTENANCE FACILITY
OFFICE REDEVELOPMENT

421 OSBORNE ST. SOUTH, WINNIPEG, MB

Title
PARTIAL FLOOR PLAN - POWER AND
SYSTEMS - DEMOLITION

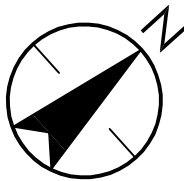
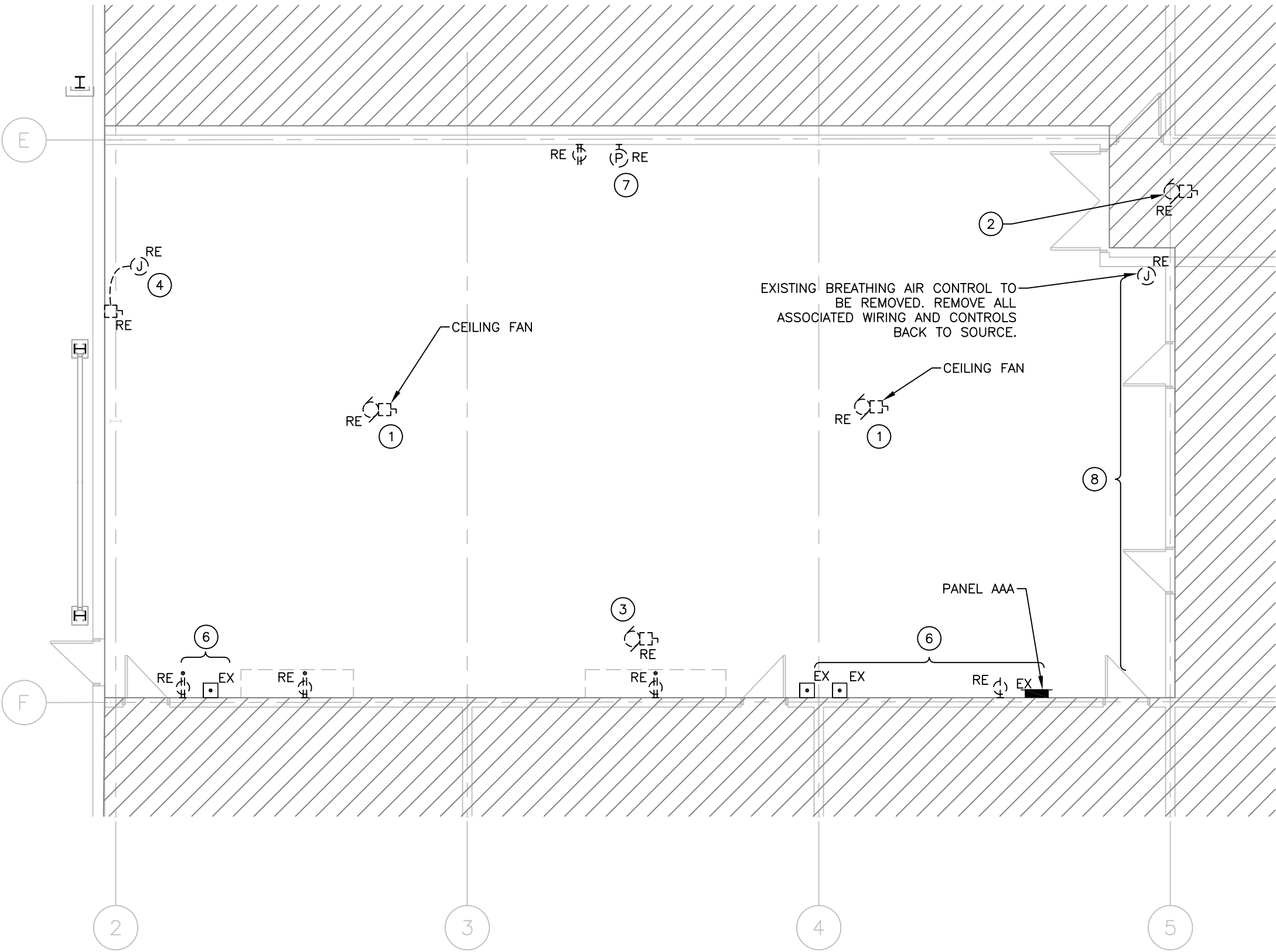
Project No. 115421006	Scale 1/8"=1'-0"	
Drawing No. E-103	Sheet 5 of 18	Revision 0

GENERAL NOTES:

- DISCONNECT AND REMOVE EXISTING RECEPTACLE. REMOVE WIRE AND CONDUIT BACK TO SOURCE.

KEY NOTES:

- CEILING FAN TO BE REMOVED BY MECHANICAL. ELECTRICAL CONTRACTOR TO REMOVE POWER, WIRE, CONDUIT, ETC. BACK TO SOURCE.
- EXISTING EXHAUST FAN TO BE REMOVED BY MECHANICAL. ELECTRICAL CONTRACTOR TO REMOVE POWER, WIRE, CONDUIT, ETC. BACK TO SOURCE.
- EXISTING EXHAUST HOOD TO BE REMOVED BY MECHANICAL. ELECTRICAL CONTRACTOR TO REMOVE POWER, WIRE, CONDUIT, ETC. BACK TO SOURCE.
- EXISTING HOT WATER TANK TO BE REMOVED BY MECHANICAL. ELECTRICAL CONTRACTOR TO REMOVE POWER, WIRE, CONDUIT, ETC. BACK TO SOURCE.
- EXISTING PANEL TO REMAIN.
- EXISTING CONTROL PANELS, PUSH BUTTONS AND EXHAUST SWITCHES SERVING PAINT BOOTHS TO REMAIN.
- DISCONNECT AND REMOVE EXISTING SPEAKER. REMOVE ALL ASSOCIATED WIRING.
- EXISTING DEVICES LOCATED ON WALL TO REMAIN.



1
E-103
PARTIAL FLOOR PLAN – POWER AND SYSTEMS – DEMOLITION
1/8" = 1'-0"