

Copyright Reserved

The Contractor shall verify and be responsible for all dimensions. DO NOT scale the drawing - any errors or omissions shall be reported to Stantec without delay. The Copyrights to all designs and drawings are the property of Stantec. Reproduction or use for any purpose other than that authorized by Stantec is forbidden.

Consultants

Legend

Revision

ISSUED FOR CONSTRUCTION
Issued

File Name:

Permit-Seal



**ENGINEERS
GEOSCIENTISTS
MANITOBA**
Certificate of Authorization
Stantec Consulting Ltd.
No. 1301

Client/Project

WINNIPEG TRANSIT MAINTENANCE FACILITY
OFFICE REDEVELOPMENT

421 OSBORNE ST. SOUTH, WINNIPEG, MB

Title

PARTIAL FLOOR PLAN - LIGHTING -
NEW CONSTRUCTION

Project No.
115421006

Scale
1/8"=1'-0"

Drawing No.

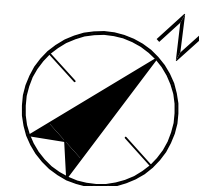
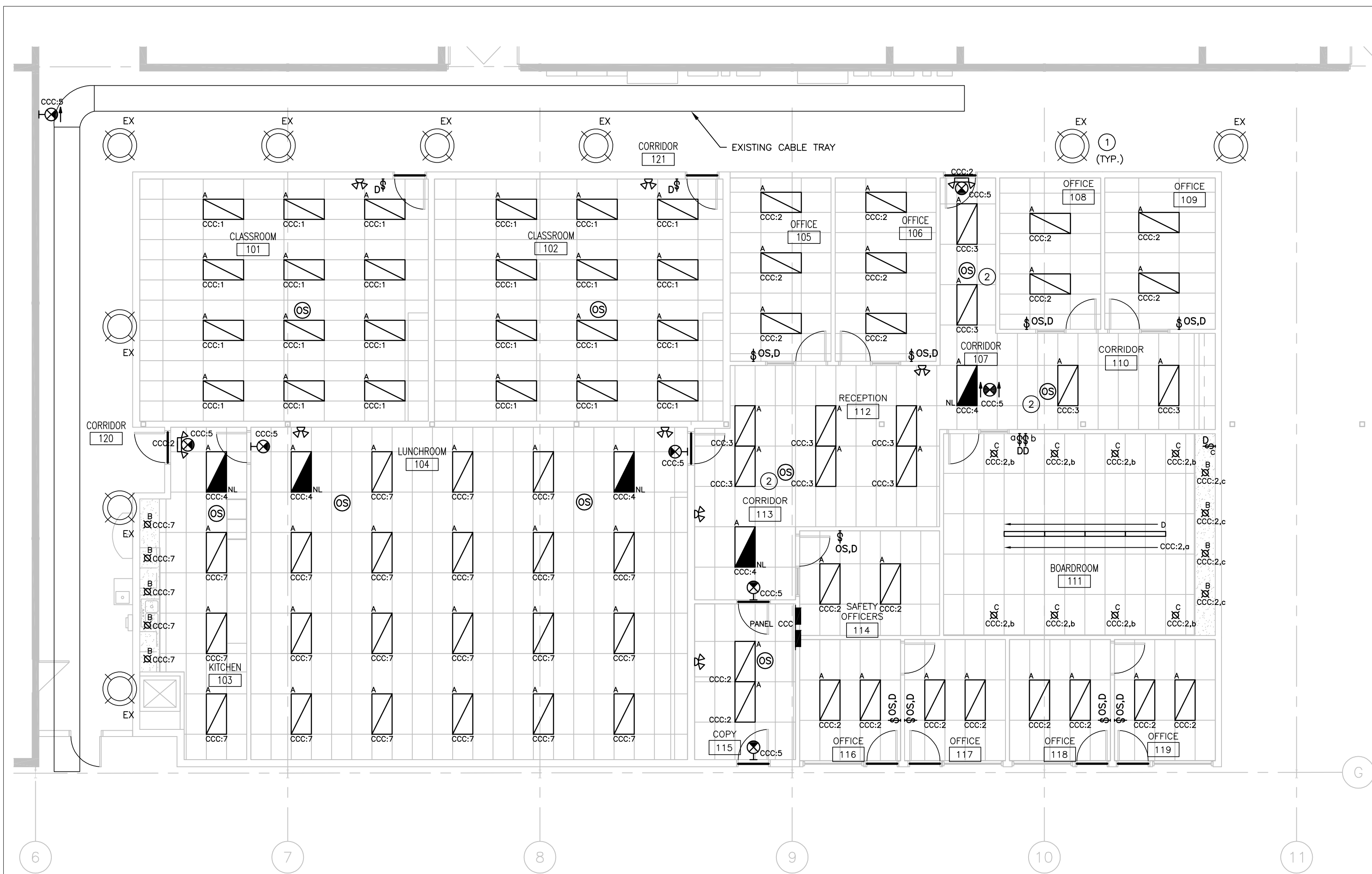
Sheet

Revision

E-202

8 of 18

0



1 PARTIAL FLOOR PLAN - LIGHTING - NEW CONSTRUCTION

E-202 1/8" = 1'-0"

GENERAL NOTES:

- ALL NEW EXIT SIGNS TO MATCH EXISTING GREEN RUNNING MAN EXIT SIGNS.
- EMERGENCY LIGHTING TESTING TO BE CONDUCTED IN ACCORDANCE WITH THE CITY OF WINNIPEG INTEGRATED LIFE SAFETY SYSTEM TESTING.
- ALL OFFICE, CLASSROOM AND KITCHEN LIGHTING SHALL BE CONTROLLED BY LINE VOLTAGE ON/OFF/DIMMER/OCCUPANCY SENSOR OR DIMMER SWITCH AND CEILING MOUNTED OCCUPANCY SENSOR. UPON ENTRY INTO ROOM, OCCUPANCY SENSOR WILL TURN ON THE LIGHTS AT THE DIMMING LEVEL THAT HAS BEEN MANUALLY SET. LIGHTS TO TURN OFF AFTER 30 MINUTES WITH NO MOTION. CONFIRM EXACT TIME OUT SETTINGS WITH OWNER.

KEY NOTES:

- ALLOW FOR THE RELOCATION OF EXISTING HIGH BAY FIXTURES SHOULD THEY INTERFERE WITH NEW OFFICE WALLS. COORDINATE ON SITE.
- OCCUPANCY SENSORS SHALL CONTROL CORRIDOR LIGHTING AND OPEN RECEPTION LIGHTING.