

Copyright Reserved

The Contractor shall verify and be responsible for all dimensions. DO NOT scale the drawing - any errors or omissions shall be reported to Stantec without delay. The Copyrights to all designs and drawings are the property of Stantec. Reproduction or use for any purpose other than that authorized by Stantec is forbidden.

Consultants

Legend

Revision

ISSUED FOR CONSTRUCTION	CB	AA	25.06.04
Issued	By	Appd.	YY.MM.DD

File Name:	Dwn.	Chkd.	Dsgn.	YY.MM.DD
------------	------	-------	-------	----------

Permit-Seal



Client/Project
WINNIPEG TRANSIT MAINTENANCE FACILITY
OFFICE REDEVELOPMENT

421 OSBORNE ST. SOUTH, WINNIPEG, MB

Title
PARTIAL FLOOR PLAN - POWER AND
SYSTEMS - NEW CONSTRUCTION

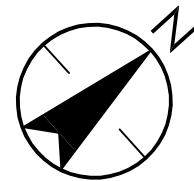
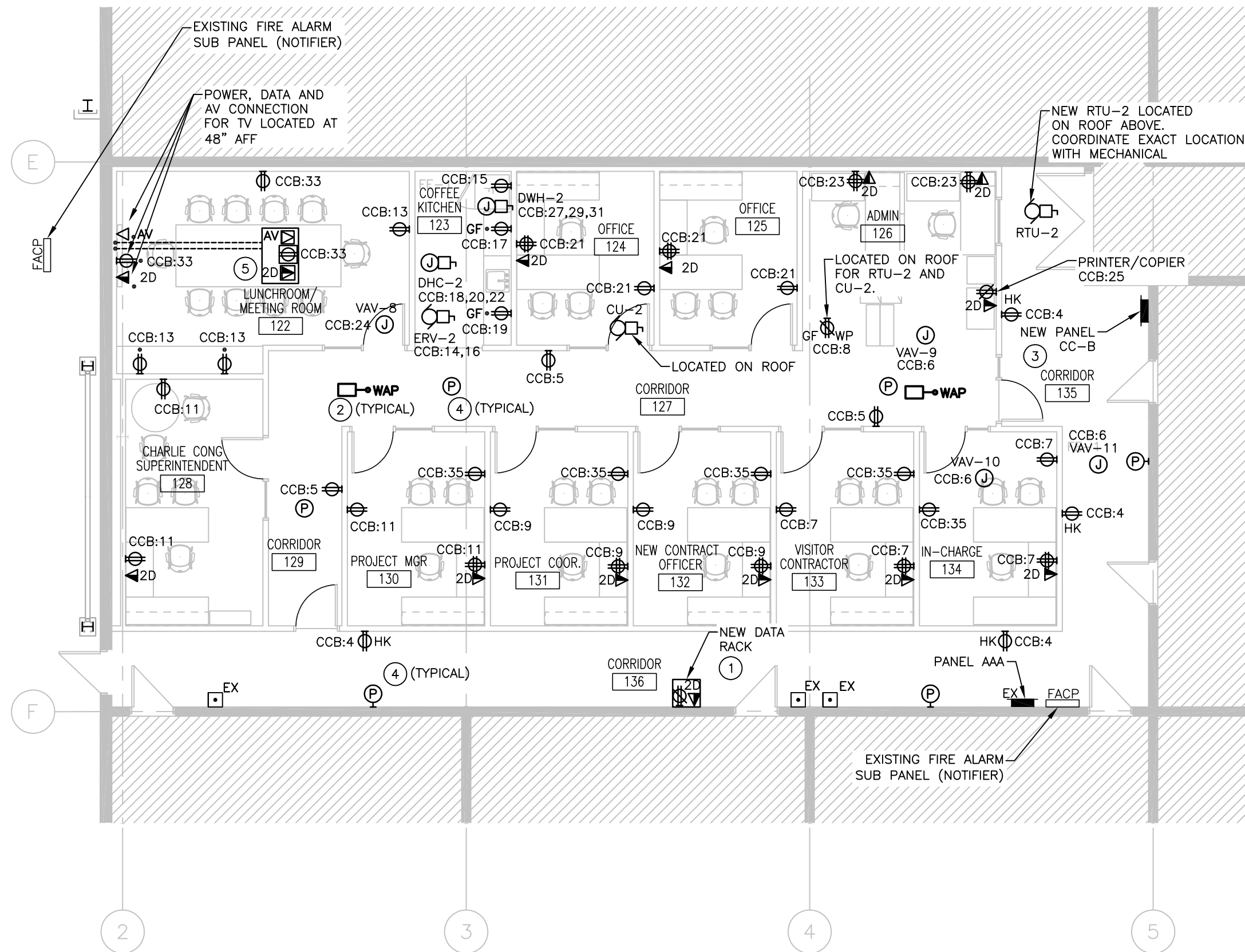
Project No. 115421006	Scale 1/8"=1'-0"
Drawing No. E-203	Sheet 9 of 18
	Revision 0

GENERAL NOTES:

- ALL VOICE/DATA CABLES TO TERMINATE IN NEW DATA RACK LOCATED IN ROOM 114.
- PROVIDE J-HOOKS IN CEILING SPACE AND CONDUIT WITHIN WALL CAVITY AS REQUIRED TO ROUTE DATA CABLES TO VOICE/DATA OUTLETS.
- ALL CABLES TO BE SUPPORTED INDEPENDENTLY OF CEILING SUPPORTS. NO TYWRAPS ARE PERMITTED FOR WIRING OR CABLES EXCEPT IN CABLE TRAYS. VELCRO BANDING TO BE UTILIZED ON ALL COMMUNICATION CABLING WHERE NOT IN CONDUIT.
- ALL WIRING TO BE INSTALLED IN WIREWAY ON EXPOSED WALLS AND SURFACES. 1" PANDUIT FINGER DUCT MINIMUM STANDARD.
- COORDINATE ALL MECHANICAL DEVICE LOCATIONS WITH MECHANICAL PRIOR TO CONNECTIONS.
- COORDINATE RECEPTACLE ELEVATION WITH ARCHITECTURAL ELEVATIONS FOR KITCHEN 103. REFER TO DRAWING AE-201 DETAILS 8 PRIOR TO ROUGH-IN.
- COORDINATE POWER, DATA AND AV OUTLET HEIGHT WITH INTERIOR DESIGN PRIOR TO ROUGH-IN.

KEY NOTES:

- PROVIDE NEW 12 RU WALL MOUNTED HINGED DATA CABINET C/W 48 PORT SWITCH. DATA CABINET TO BE PANDUIT; PZMMC12W OR APPROVED EQUAL. PROVIDE ADDITIONAL PATCH PANELS AS REQUIRED.
- NEW WIRELESS ACCESS POINT. PROVIDE ONE CAT 6 CABLE TO LOCATION. COIL 6' FEET OF SPARE CABLE IN CEILING SPACE. COORDINATE EXACT LOCATION WITH OWNER.
- NEW 120/208V, 3 PHASE, 4 WIRE 42 CIRCUIT PANEL. WIRE TO EXISTING PANEL BB. REFER TO SINGLE LINE DIAGRAM FOR DETAILS.
- PROVIDE NEW PUBLIC ADDRESS SPEAKERS TO MATCH EXISTING WITHIN THE FACILITY. TIE NEW SPEAKERS INTO EXISTING PA SYSTEM. COORDINATE REQUIREMENTS WITH OWNER.
- PROVIDE RECESSED 4-GANG FLOOR BOX IN CONCRETE SLAB C/W DUPLEX RECEPTACLE, AV (HDMI) AND DATA OUTLETS. FLOOR BOX TO BE LEGRAND EFB45 OR APPROVED EQUAL. PROVIDE JUNCTION BOX ON WALL BEHIND TV WITH HDMI FACEPLATE CONNECTION, DATA AND POWER CONNECTION. TRENCH FLOOR FROM FLOOR BOX TO WALL AND RUN CONDUITS IN TRENCH AND WITHIN WALL CAVITY TO JUNCTION BOXES BEHIND TV. CONTRACTOR TO COORDINATE EXACT LOCATION OF FLOOR BOX WITH FURNITURE MANUFACTURER PRIOR TO CUTTING. SCAN SLAB WITH GPR AND X-RAY PRIOR TO CUTTING INTO CONCRETE SLAB.



1 PARTIAL FLOOR PLAN – POWER AND SYSTEMS – NEW CONSTRUCTION
E-203
1/8" = 1'-0"