

## Copyright Reserved

The Contractor shall verify and be responsible for all dimensions. DO NOT scale the drawing - any errors or omissions shall be reported to Stantec without delay. The Copyrights to all designs and drawings are the property of Stantec. Reproduction or use for any purpose other than that authorized by Stantec is forbidden.

## Consultants

## Legend

## Revision

ISSUED FOR CONSTRUCTION  
Issued

File Name:

## Permit-Seal



**ENGINEERS  
GEOSCIENTISTS  
MANITOBA**  
Certificate of Authorization  
Stantec Consulting Ltd.  
No. 1301

## Client/Project

WINNIPEG TRANSIT MAINTENANCE FACILITY  
OFFICE REDEVELOPMENT

421 OSBORNE ST. SOUTH, WINNIPEG, MB

## Title

PARTIAL FLOOR PLAN - POWER AND -  
SYSTEM - NEW CONSTRUCTION

Project No.  
115421006

Scale  
1/8"=1'-0"

Drawing No.

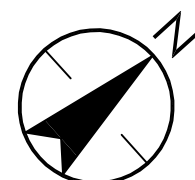
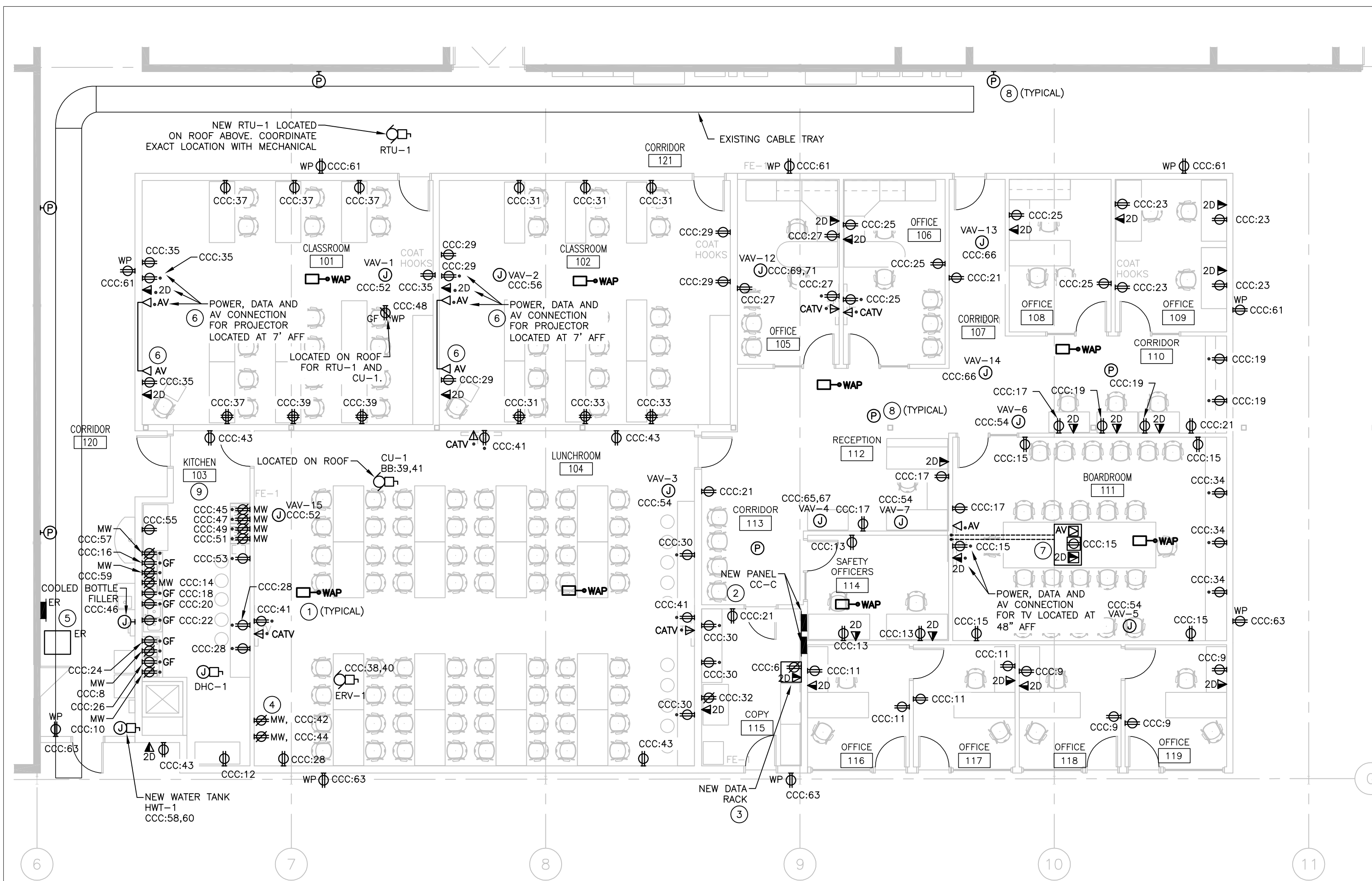
Sheet

Revision

E-204

10 of 18

0



## 1 PARTIAL FLOOR PLAN - POWER AND SYSTEMS - NEW CONSTRUCTION

E-204 1/8" = 1'-0"

### GENERAL NOTES:

- ALL VOICE/DATA CABLES TO TERMINATE IN NEW DATA RACK LOCATED IN ROOM 114.
- PROVIDE J-HOOKS IN CEILING SPACE AND CONDUIT WITHIN WALL CAVITY AS REQUIRED TO ROUTE DATA CABLES TO VOICE/DATA OUTLETS.
- ALL CABLES TO BE SUPPORTED INDEPENDENTLY OF CEILING SUPPORTS. NO TYWRAPS ARE PERMITTED FOR WIRING OR CABLES EXCEPT IN CABLE TRAYS. VELCRO BANDING TO BE UTILIZED ON ALL COMMUNICATION CABLING WHERE NOT IN CONDUIT.
- ALL WIRING TO BE INSTALLED IN WIREWAY ON EXPOSED WALLS AND SURFACES. MIN 4" PANDUIT FINGER DUCT MINIMUM STANDARD.
- COORDINATE ALL MECHANICAL DEVICE LOCATIONS WITH MECHANICAL PRIOR TO CONNECTIONS.

### KEY NOTES:

- NEW WIRELESS ACCESS POINT. PROVIDE ONE CAT 6 CABLE TO LOCATION, COIL 6' FEET OF CABLE IN CEILING SPACE. COORDINATE EXACT LOCATION WITH OWNER.
- NEW 120/208V, 3 PHASE, 4 WIRE 84 CIRCUIT DOUBLE TUB PANEL. WIRE TO EXISTING PANEL BB. REFER TO SINGLE LINE DIAGRAM FOR DETAILS.
- PROVIDE NEW 12 RU WALL MOUNTED DATA CABINET C/W 48 PORT PATCH PANEL. DATA CABINET TO BE PANDUIT: AWMR12 OR APPROVED EQUAL. PROVIDE ADDITIONAL PATCH PANELS AS REQUIRED.
- NEW HOT WATER TANK PROVIDED BY MECHANICAL. COORDINATE EXACT LOCATION WITH MECHANICAL.
- EXISTING TRANSFORMER AND PANEL RELOCATED TO THIS LOCATION. EXTEND FEEDERS, BRANCH CIRCUIT WIRING AND CONDUIT AS NECESSARY. STRUCTURAL TO PROVIDE 100MM HOUSE KEEPING PAD FOR TRANSFORMER.
- PROVIDE 1 1/4" CONDUIT WITHIN WALL CAVITY STUBBED INTO CEILING SPACE FOR HDMI CONNECTION BETWEEN DESK AND PROJECTOR. CONFIRM EXACT LOCATION OF PROJECTOR PRIOR TO ROUGH-IN.
- PROVIDE RECESSED 4-GANG FLOOR BOX IN CONCRETE SLAB C/W DUPLEX RECEPTACLE, AV (HDMI) AND DATA OUTLETS. FLOOR BOX TO BE LEGRAND EFB45 OR APPROVED EQUAL. PROVIDE JUNCTION BOX ON WALL BEHIND TV WITH HDMI FACEPLATE CONNECTION, DATA AND POWER CONNECTION. TRENCH FLOOR FROM FLOOR BOX TO WALL AND RUN CONDUITS IN TRENCH AND WITHIN WALL CAVITY TO JUNCTION BOXES BEHIND TV. CONTRACTOR TO COORDINATE EXACT LOCATION OF FLOOR BOX WITH FURNITURE MANUFACTURER PRIOR TO CUTTING. SCAN SLAB WITH GPR AND X-RAY PRIOR TO CUTTING INTO CONCRETE SLAB.
- PROVIDE NEW PUBLIC ADDRESS SPEAKERS TO MATCH EXISTING WITHIN THE FACILITY. TIE NEW SPEAKERS INTO EXISTING PA SYSTEM. COORDINATE REQUIREMENTS WITH OWNER.
- COORDINATE RECEPTACLE ELEVATION WITH ARCHITECTURAL ELEVATIONS FOR KITCHEN 103. REFER TO DRAWING AE-201 DETAILS 2 AND 3 PRIOR TO ROUGH-IN.