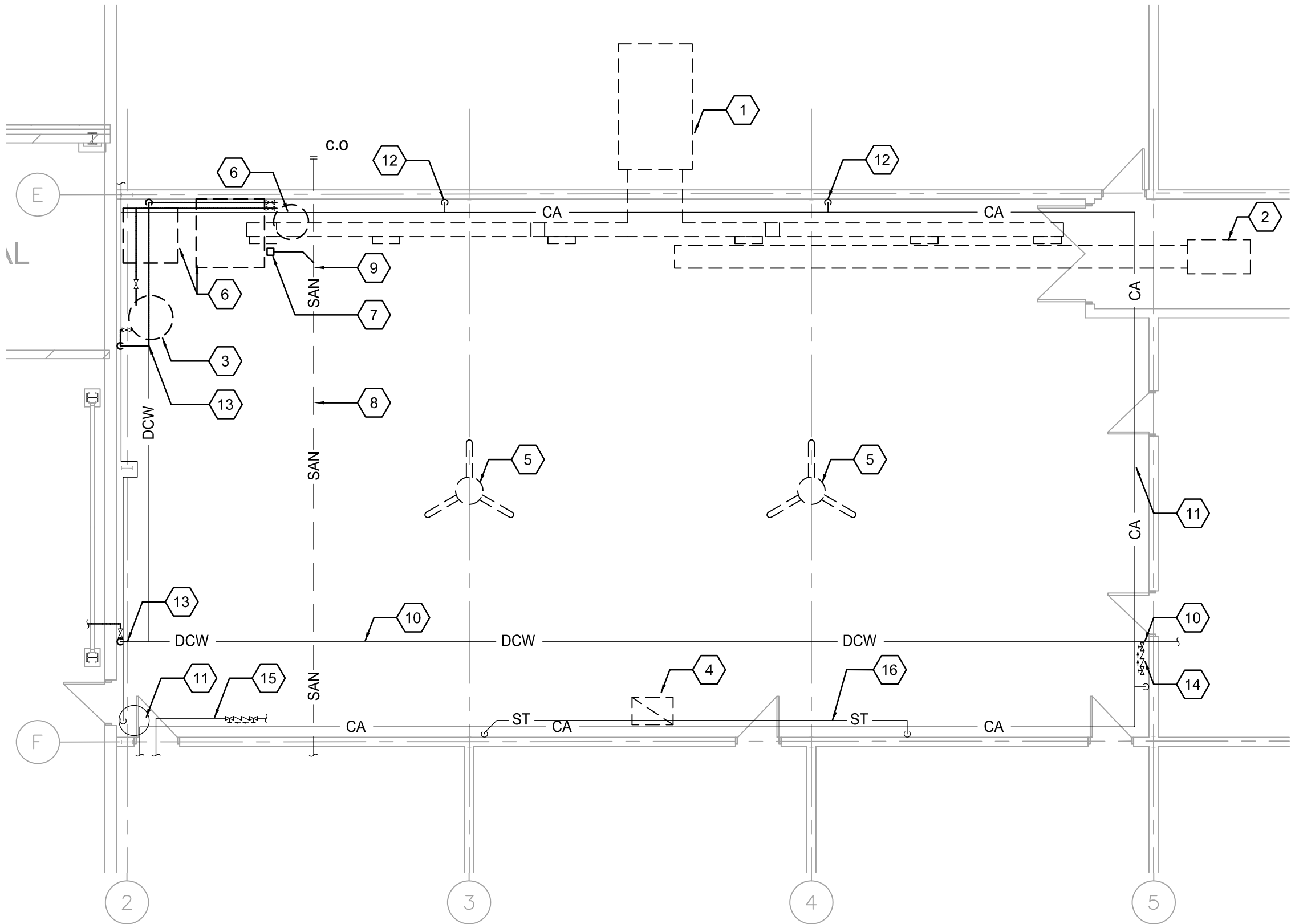


DEMOLITION NOTES:

1. NOT ALL CONDITIONS HAVE BEEN SHOWN. CONTRACTOR TO FIELD VERIFY CONDITIONS PRIOR TO DEMO.
2. CONTRACTOR SHALL PROTECT WORK AND EXISTING CONDITIONS ASSOCIATED WITH THIS CONTRACT FROM DAMAGE, COVER ENDS OF PIPING AND DUCTWORK THAT ARE ACTIVELY BEING WORKED ON. IT IS THE CONTRACTORS RESPONSIBILITY TO REPAIR OR REPLACE ANY DAMAGED ITEMS THAT OCCURS DURING THIS CONSTRUCTION PROJECT AT NO COST TO THE OWNER.
3. DEMOLISH EQUIPMENT, DUCTWORK, PIPING, HANGERS, CONTROLS AND ASSOCIATED EXISTING SYSTEMS AS REQUIRED TO REPLACE EACH SYSTEM. CONTRACTOR SHALL COORDINATE DEMOLITION WITH EXISTING SYSTEMS AND COMPONENTS TO REMAIN PRIOR TO WORK COMMENCING.
4. IT IS THE CONTRACTORS RESPONSIBILITY TO CLEAN UP DEBRIS FROM THE SITE AT THE END OF EACH WORK DAY AND DISPOSE OF, EITHER IN LAY DOWN RECYCLE BINS PROVIDED BY THE CONTRACTOR OR OFFSITE ALTOGETHER.
5. DEMOLISHED EQUIPMENT SHALL BE TURNED OVER TO THE OWNER UNLESS DIRECTED OTHERWISE IF NOT REQUIRED BY THE OWNER, DISPOSE AS REQUIRED.



1
MD102

MAIN FLOOR PLAN - MECHANICAL DEMOLITION - AREA B

SCALE: 1/8"=1'-0"

#KEYNOTES

1. DEMOLISH EXISTING MAKE UP AIR UNIT IN ITS ENTIRETY INCLUDING ASSOCIATED ACCESSORIES, DUCTWORK, GRILLES, AND CONTROL. PATCH OPENINGS ON THE WALL AND THE ROOF. DISCONNECT AND REMOVE THE NATURAL GAS PIPES BACK TO MAIN ON THE ROOF AND CAP OPEN ENDED.
2. REMOVE EXISTING FAN AND ASSOCIATED DUCTWORK. PATCH OPENING ON THE WALL.
3. REMOVE EXISTING HOT WATER TANK AND ASSOCIATED PIPES AND ACCESSORIES. DEMOLISH ALL DHW PIPEWORK IN THE SPACE.
4. REMOVE EXISTING DUCT AND PATCH ROOF OPENING AND MAKE WATER TIGHT. REMOVE EXISTING CEILING FAN AND CONTROLS.
6. DEMOLISH PLUMBING FIXTURE AND DISCONNECT SERVICES. DEMOLISH ALL PIPE BRANCHES TO MAIN AND CAP OPEN ENDED.
7. REMOVE FLOOR DRAIN AND DEMOLISH SAN PIPE TO MAIN AND CAP OPEN END. SANITARY MAIN LINE TO REMAIN. CONFIRM SIZE AND LOCATION ON SITE.
9. CONTRACTOR TO SCAN EXISTING FLOOR TO LOCATE EXISTING UNDER SLAB PIPING TO TIE IN FUTURE CONNECTION. DCW LINE TO REMAIN. CONFIRM SIZE AND LOCATION ON SITE.
11. EXISTING COMPRESSED AIR PIPE AND EQUIPMENT TO REMAIN.
12. REMOVE COMPRESSED AIR LINE BRANCHES TO MAIN AND CAP OFF.
13. DEMOLISH DCW PIPE TO THIS POINT AND TEMPORARILY CAP. REFER TO RENOVATION PLANS FOR NEW DIECTIONS.
14. EXISTING BACKFLOW PREVENTER TO REMAIN.
15. EXISTING FIRE PROTECTION SYSTEM TO REMAIN.
16. EXISTING STORM DRAIN PIPES TO REMAIN.

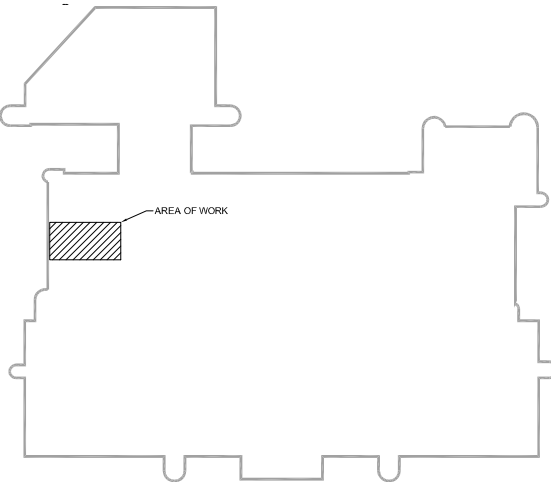


Stantec Consulting Ltd.
Suite 500, 311 Portage Avenue
Winnipeg MB Canada R3B 2B9
Tel. 204.489.5900 Fax. 204.453.9012
www.stantec.com

Copyright Reserved

The Contractor shall verify and be responsible for all dimensions. DO NOT scale the drawing - any errors or omissions shall be reported to Stantec without delay. The Copyrights to all designs and drawings are the property of Stantec. Reproduction or use for any purpose other than that authorized by Stantec is forbidden.

Consultants



Legend

Revision	By	Appd.	YY.MM.DD
0	ISSUED FOR CONSTRUCTION	MA	BH 25.06.04
Issued	By	Appd.	YY.MM.DD

File Name:	21006-M	GS	WD	MA	25.03.28
		Dwn.	Chkd.	Dsgn.	YY.MM.DD

Permit-Seal

**ENGINEERS
GEOSCIENTISTS
MANITOBA**
Certificate of Authorization
Stantec Consulting Ltd.
No. 1301



Client/Project

WINNIPEG TRANSIT MAINTENANCE FACILITY
OFFICE REDEVELOPMENT

421 OSBORNE ST. SOUTH, WINNIPEG, MB

Title

MECHANICAL DEMOLITION LAYOUT -
PARTIAL PLAN B

Project No.	Scale	
115421006	As indicated	
Drawing No.	Sheet	Revision
MD102	5 of 16	0