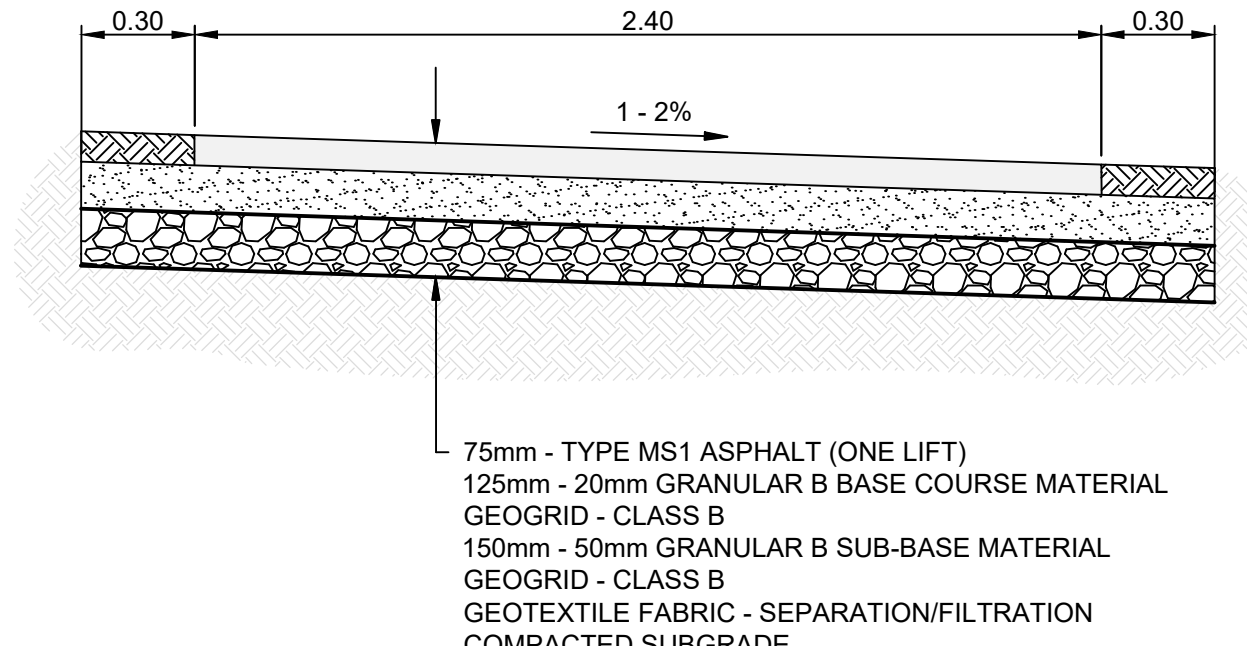
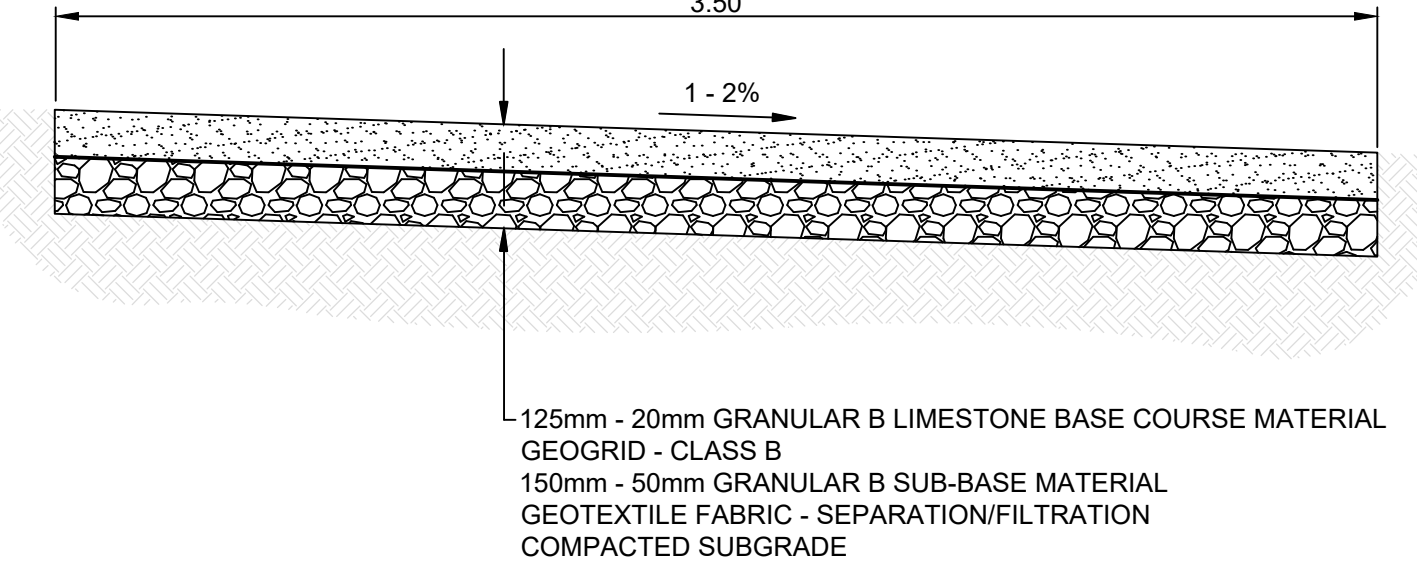


TYPICAL ASPHALT PATHWAY - CROSS SECTION: A
N.T.S.



ASPHALT PATHWAY ABOVE LDS PIPE - CROSS SECTION: B
N.T.S.



GRANULAR SURFACE ACCESS POINT - CROSS SECTION: C
N.T.S.

CONSTRUCTION NOTES

1. REMOVE EXISTING PATH AND CONSTRUCT NEW 75mm MS1 ASPHALT PATHWAY AS PER DETAILED CROSS SECTION (E16)
2. RENEW EXISTING 100mm CONCRETE SIDEWALK (SD-228A)
3. RENEW EXISTING LIP CURB (SD-202A, SD-202C)
4. REMOVE EXISTING CULVERT (CW 3610)
5. SALVAGE AND REINSTALL POST BOLLARD WITH CHAIN (E17)
6. REMOVE EXISTING POST BOLLARD AND INSTALL NEW POST BOLLARD WITH CHAIN (E17)
7. CONSTRUCT GRANULAR SURFACE WITH GRANULAR B BASE COURSE MATERIAL AS PER DETAILED CROSS SECTION

GENERAL NOTES

- A. PAVEMENT DIMENSIONS ARE TO BACK OF CURB
- B. ALL CURB RADII UNDER 15.0m SHALL BE MODIFIED
- C. CURB REPLACEMENT AS DIRECTED BY CONTRACT ADMINISTRATOR
- D. CONTRACTOR TO CONFIRM THE LOCATION OF ALL UTILITIES/SERVICES IN THE FIELD PRIOR TO CONSTRUCTION
- E. PAVEMENT REPAIRS SHOWN ARE A REPRESENTATIVE SAMPLE OF THE TENDER QUANTITIES

ISSUED FOR TENDER

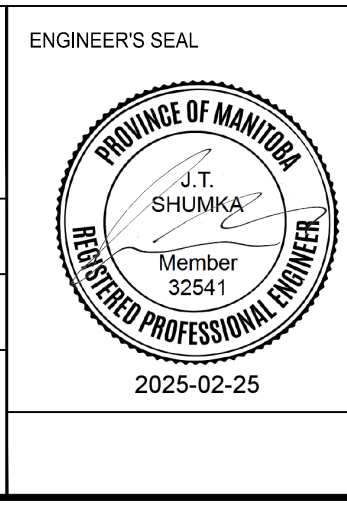
METRIC
WHOLE NUMBERS INDICATE MILLIMETERS
DECIMALIZED NUMBERS INDICATE METERS

TENDER NO. 2-2025

⊕	HYDRANT	◆	---	LDS/WWS	---	CONCRETE	▨
⊗	VALVE	●	---	WATERMAIN	---	CONCRETE SIDEWALK	▩
⊙	CURB STOP	●	---	GAS	---	ASPHALT	▧
○	MANHOLE	●	---	TRAFFIC SIGNALS	---	GRAVEL	▦
□	CATCH BASIN	●	---	HYDRO/STREET LIGHT	---		
△	CATCH PIT	▲	---	MTS/SHAW	---		
⊙	LIGHT STANDARD	●	---	CURB RENEWAL	---		
○	BOLLARD	○	---	PROPERTY LINE	---		
—	FENCE	—	---	RAMP CURB	---		
—	CULVERT	—	---	ELEVATIONS	(231.000)		
→	SWALE FLOW	→	---	TREE	---		
---	EXISTING	---	---	EXISTING	---	---	---
---	LEGEND - PLAN	---	---	LEGEND - PLAN	---	---	---
---	PROPOSED	---	---	PROPOSED	---	---	---

LOCATION APPROVED	DATE	B.M. ELEV.
UNDERGROUND STRUCTURES		
DATE		
NOTE:		
LOCATION OF UNDERGROUND STRUCTURES AS SHOWN ARE BASED ON THE BEST INFORMATION AVAILABLE. BUT NO GUARANTEE IS GIVEN THAT ALL EXISTING UTILITIES ARE SHOWN OR THAT THE GIVEN LOCATIONS ARE EXACT. CONFIRMATION OF EXISTENCE AND EXACT LOCATION OF ALL SERVICES MUST BE OBTAINED FROM THE INDIVIDUAL UTILITIES BEFORE PROCEEDING WITH CONSTRUCTION.		
NO.	REVISIONS	DATE
1.	ISSUED FOR TENDER	2025/02/25
2.	SUBMIT FOR PLAN APPROVAL	2025/02/05

ENGINEERING DIVISION TECHNOLOGY SERVICES BRANCH 106 - 1155 PACIFIC AVE	
DESIGNED BY D.P.	CHECKED BY G.K., R.W., J.T.S.
DRAWN BY D.P.	APPROVED BY J.T.S.
HOR. SCALE: 1 : 250	
DATE: 2025/02/25	



THE CITY OF WINNIPEG
PUBLIC WORKS DEPARTMENT

ADSUM PARK PATHWAY
FROM MAPLES COMMUNITY CENTER TO MARGATE ROAD
ASPHALT PATHWAY RECONSTRUCTION AND ASSOCIATED WORKS
FROM STA. 1+00 TO STA. 2+20

CITY DRAWING NUMBER SE-25-100
SHEET 1 OF 29
1