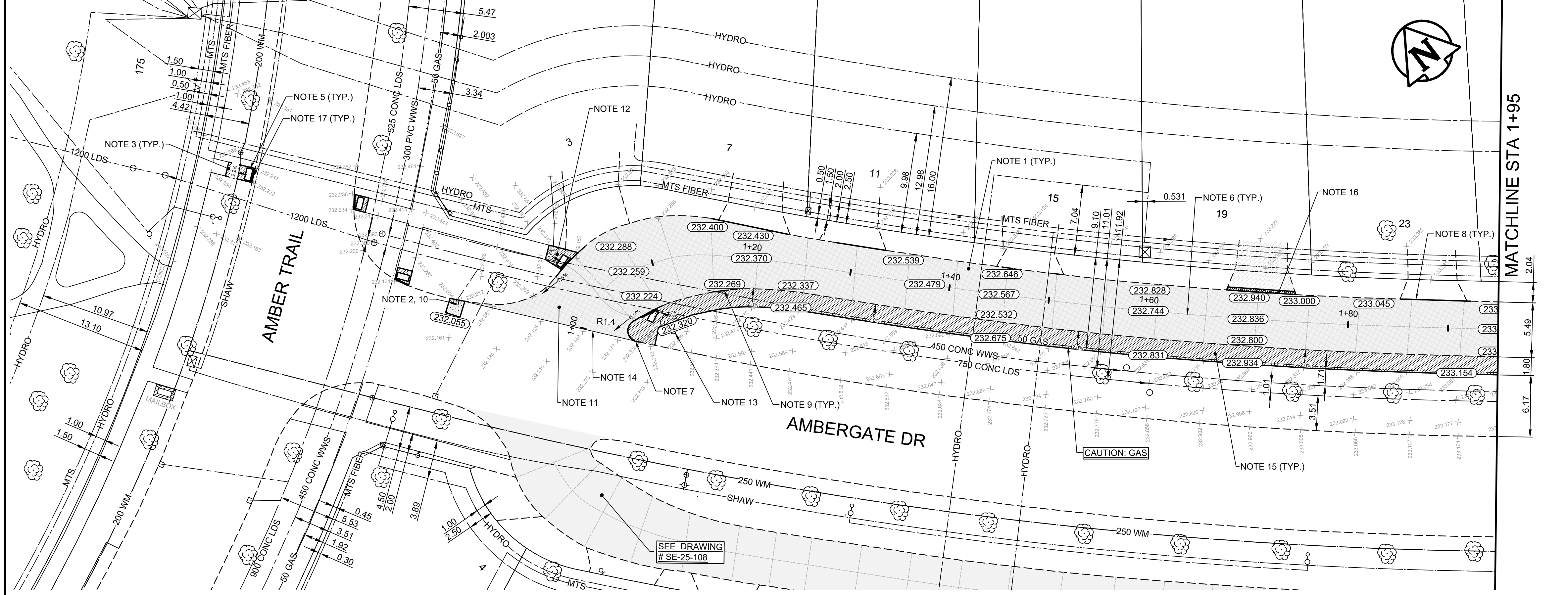


TYPICAL CONCRETE SIDEWALK CROSS SECTION  
N.T.S.



- CONSTRUCTION NOTES**
- CONSTRUCT NEW 80mm MS1 ASPHALT OVERLAY (2 LIFTS) WITH TYPE B PAVEMENT REPAIR FABRIC BETWEEN LIFTS (E16, E18)
  - REMOVE EXISTING CONCRETE PAVEMENT AND CONSTRUCT NEW 150mm REINFORCED CONCRETE PAVEMENT
  - RENEW EXISTING 100mm CONCRETE SIDEWALK (SD-228A)
  - CONSTRUCT NEW CURB RAMP (SD-229D)
  - INSTALL NEW DETECTABLE WARNING SURFACE TILE (SD-229E)
  - PATCH EXISTING JOINTS WITH MS1 ASPHALT AS DIRECTED BY CONTRACT ADMINISTRATOR (E15)
  - RENEW EXISTING MONOLITHIC CONCRETE BULLNOSE (SD-227C)
  - RENEW EXISTING LIP CURB (SD-202A, SD-202C)
  - RENEW EXISTING BARRIER CURB (SD-205, SD-206A)
  - ADJUST FRAME TO GRADE
  - REMOVE EXISTING ASPHALT OVERLAY
  - CONSTRUCT NEW 150mm REINFORCED CONCRETE SIDEWALK
  - REMOVE EXISTING TREE (E13)
  - LIMIT OF ASPHALT OVERLAY
  - CONSTRUCT NEW 100mm CONCRETE SIDEWALK AS PER CROSS SECTION
  - REGRADE EXISTING PAVING STONES
  - RENEW EXISTING CURB RAMP (SD-229D)
  - REMOVE EXISTING SIDEWALK BLOCKS
- GENERAL NOTES**
- PAVEMENT DIMENSIONS ARE TO BACK OF CURB
  - ALL CURB RADII UNDER 15.0m SHALL BE MODIFIED
  - CURB REPLACEMENT AS DIRECTED BY CONTRACT ADMINISTRATOR
  - CONTRACTOR TO CONFIRM THE LOCATION OF ALL UTILITIES/SERVICES IN THE FIELD PRIOR TO CONSTRUCTION
  - ADJUST WATER VALVES AND CURB STOPS AS DIRECTED BY CONTRACT ADMINISTRATOR
  - PAVEMENT REPAIRS SHOWN ARE A REPRESENTATIVE SAMPLE OF THE TENDER QUANTITIES
  - ASPHALT TIE-INS ARE TO BE DETERMINED IN THE FIELD BY CONTRACT ADMINISTRATOR

EXISTING	LEGEND - PLAN	PROPOSED	EXISTING	LEGEND - PLAN	PROPOSED	EXISTING	LEGEND - PROFILE	PROPOSED
⊕	HYDRANT	◆	---	LDS/WWS	---	▨	CONCRETE	▨
⊗	VALVE	◆	---	WATERMAIN	---	▨	CONCRETE SIDEWALK	▨
○	CURB STOP	◆	---	GAS	---	▨	ASPHALT	▨
○	MANHOLE	◆	---	TRAFFIC SIGNALS	---	▨	PAVEMENT REPAIR FABRIC	▨
□	CATCH BASIN	◆	---	HYDRO/STREET LIGHT	---	▨	PAVING STONES	▨
△	CATCH PIT/CURB INLET	◆	---	MTS/SHAW	---	▨	WOOD FENCE	▨
○	HYDRO POLE	◆	---	CURB RENEWAL	---	▨	CONCRETE FENCE	▨
○	LIGHT STANDARD	◆	---	PROPERTY LINE	---	▨	LEGEND - PLAN	▨
○	TRAFFIC SIGNAL POLE	◆	---	RAMP CURB	---	▨	NORTH GUTTER	▨
+	SURVEY BAR	◆	---	ELEVATIONS	(231.000)	▨	CENTER LINE	▨
⊕	GEODETIC BENCH MARK	◆	---	TREE	---	▨	SOUTH GUTTER	▨

**LOCATION APPROVED UNDERGROUND STRUCTURES**

DATE: \_\_\_\_\_

COMMITTEE: \_\_\_\_\_

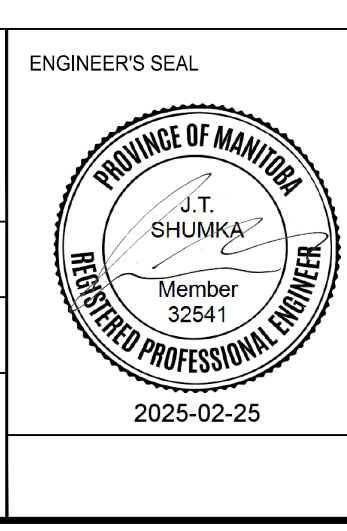
**NOTE:**  
LOCATION OF UNDERGROUND STRUCTURES AS SHOWN ARE BASED ON THE BEST INFORMATION AVAILABLE. BUT NO GUARANTEE IS GIVEN THAT ALL EXISTING UTILITIES ARE SHOWN OR THAT THE GIVEN LOCATIONS ARE EXACT. CONFIRMATION OF EXISTENCE AND EXACT LOCATION OF ALL SERVICES MUST BE OBTAINED FROM THE INDIVIDUAL UTILITIES BEFORE PROCEEDING WITH CONSTRUCTION.

**ENGINEERING DIVISION**  
TECHNOLOGY SERVICES BRANCH  
106 - 1155 PACIFIC AVE

DESIGNED BY: D.P.      CHECKED BY: G.K., R.W., J.T.S.

DRAWN BY: D.P.      APPROVED BY: J.T.S.

DATE: 2025/02/25



**METRIC**  
WHOLE NUMBERS INDICATE MILLIMETERS  
DECIMALIZED NUMBERS INDICATE METERS

**ISSUED FOR TENDER**  
TENDER NO. 2-2025

**THE CITY OF WINNIPEG**  
PUBLIC WORKS DEPARTMENT

**AMBERGATE DRIVE - NORTH FRONTAGE ROAD**  
FROM AMBER TRAIL TO PIPELINE ROAD  
CONCRETE PAVEMENT REHABILITATION, NEW MULTI-USE ASPHALT PATHWAY, NEW CONCRETE SIDEWALK AND ASSOCIATED WORKS  
FROM STA. 1+00 TO STA. 1+95

CITY DRAWING NUMBER: SE-25-105  
SHEET 6 OF 29  
1