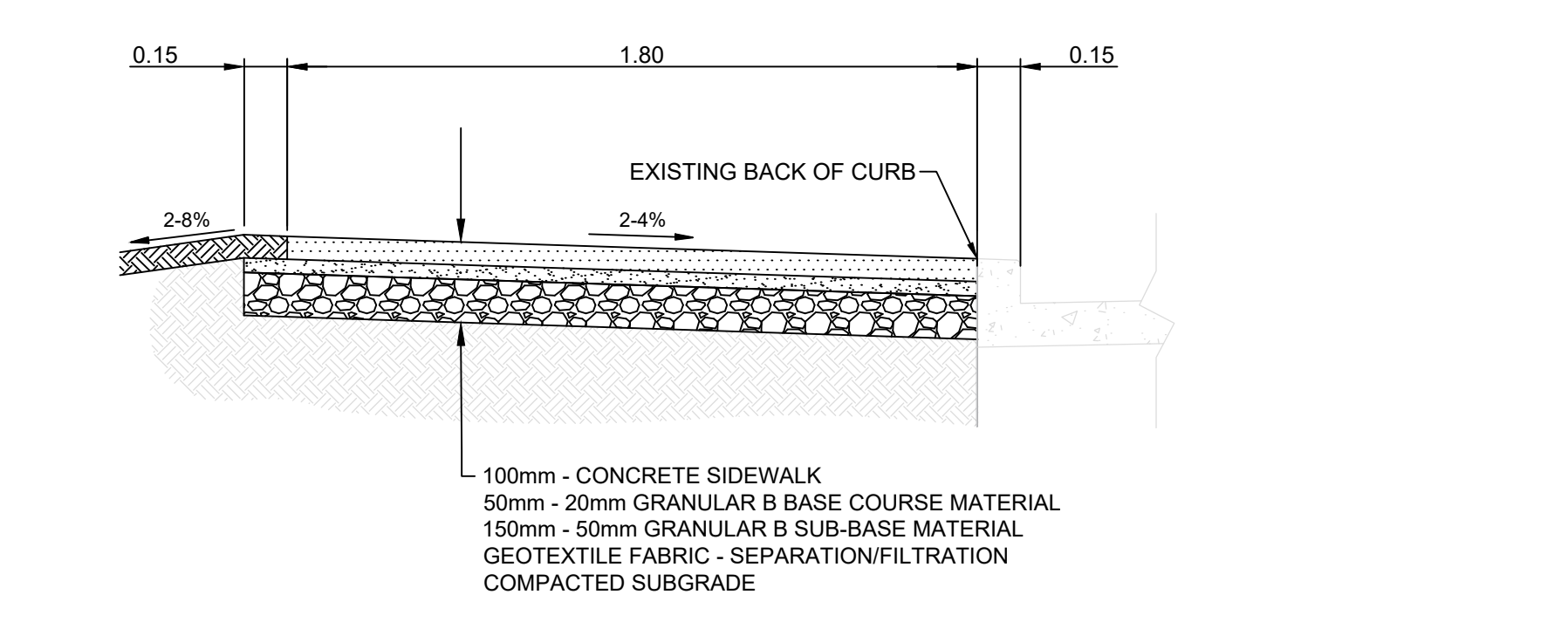


**TYPICAL ASPHALT PATHWAY CROSS SECTION**  
N.T.S.



**TYPICAL CONCRETE SIDEWALK CROSS SECTION**  
N.T.S.

- CONSTRUCTION NOTES**
- CONSTRUCT NEW 80mm MS1 ASPHALT OVERLAY (2 LIFTS) WITH TYPE B PAVEMENT REPAIR FABRIC BETWEEN LIFTS (E16, E18)
  - REMOVE EXISTING CONCRETE PAVEMENT AND CONSTRUCT NEW 150mm REINFORCED CONCRETE PAVEMENT
  - RENEW EXISTING 100mm CONCRETE SIDEWALK (SD-228A)
  - CONSTRUCT NEW CURB RAMP (SD-229D)
  - INSTALL NEW DETECTABLE WARNING SURFACE TILE (SD-229E)
  - PATCH EXISTING JOINTS WITH MS1 ASPHALT AS DIRECTED BY CONTRACT ADMINISTRATOR (E15)
  - RENEW EXISTING MONOLITHIC CONCRETE BULLNOSE (SD-227C)
  - RENEW EXISTING LIP CURB (SD-202A, SD-202C)
  - RENEW EXISTING BARRIER CURB (SD-205, SD-206A)
  - ADJUST FRAME TO GRADE
  - REMOVE EXISTING ASPHALT OVERLAY
  - CONSTRUCT NEW 150mm REINFORCED CONCRETE SIDEWALK
  - REMOVE EXISTING TREE (E13)
  - LIMIT OF ASPHALT OVERLAY
  - CONSTRUCT NEW 100mm CONCRETE SIDEWALK AS PER CROSS SECTION
  - REGRADE EXISTING PAVING STONES
  - RENEW EXISTING CURB RAMP (SD-229D)
  - REMOVE EXISTING SIDEWALK BLOCKS
  - CONSTRUCT NEW 75mm MS1 ASPHALT PATHWAY (ONE LIFT) AS PER CROSS SECTION (E16)
  - REMOVE EXISTING SIDEWALK
- GENERAL NOTES**
- PAVEMENT DIMENSIONS ARE TO BACK OF CURB
  - ALL CURB RADII UNDER 15.0m SHALL BE MODIFIED
  - CURB REPLACEMENT AS DIRECTED BY CONTRACT ADMINISTRATOR
  - CONTRACTOR TO CONFIRM THE LOCATION OF ALL UTILITIES/SERVICES IN THE FIELD PRIOR TO CONSTRUCTION
  - ADJUST WATER VALVES AND CURB STOPS AS DIRECTED BY CONTRACT ADMINISTRATOR
  - PAVEMENT REPAIRS SHOWN ARE A REPRESENTATIVE SAMPLE OF THE TENDER QUANTITIES
  - ASPHALT TIE-INS ARE TO BE DETERMINED IN THE FIELD BY CONTRACT ADMINISTRATOR

**ISSUED FOR TENDER**

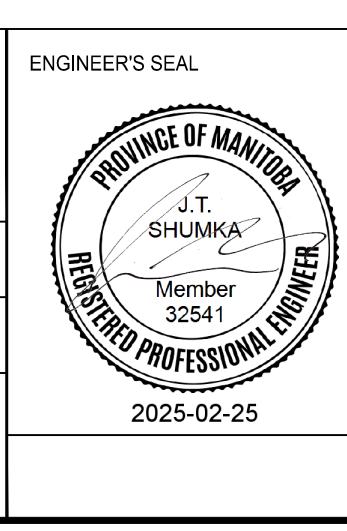
**METRIC**  
WHOLE NUMBERS INDICATE MILLIMETERS  
DECIMALIZED NUMBERS INDICATE METERS

TENDER NO. 2-2025

EXISTING	LEGEND - PLAN	PROPOSED	EXISTING	LEGEND - PLAN	PROPOSED	EXISTING	LEGEND - PROFILE	PROPOSED
⊕	HYDRANT	◆	---	LDS/WWS	---	▨	CONCRETE	▨
⊗	VALVE	◆	---	WATERMAIN	---	▨	CONCRETE SIDEWALK	▨
⊙	CURB STOP	◆	---	GAS	---	▨	ASPHALT	▨
○	MANHOLE	●	---	TRAFFIC SIGNALS	---	▨	PAVEMENT REPAIR FABRIC	▨
□	CATCH BASIN	●	---	HYDRO/STREET LIGHT	---	▨	PAVING STONES	▨
△	CATCH PIT/CURB INLET	▲	---	MTS/SHAW	---	▨	WOOD FENCE	▨
○	HYDRO POLE	●	---	CURB RENEWAL	---	▨	CONCRETE FENCE	▨
○	LIGHT STANDARD	●	---	PROPERTY LINE	---	▨	LEGEND - PLAN	PROPOSED
○	TRAFFIC SIGNAL POLE	●	---	RAMP CURB	---	▨	NORTH GUTTER	---
⊕	SURVEY BAR	◆	---	ELEVATIONS	(231.000)	▨	CENTER LINE	---
⊕	GEODETIC BENCH MARK	◆	---	TREE	---	▨	SOUTH GUTTER	---

NO.	REVISIONS	DATE	BY
2.	ISSUED FOR TENDER	2025/02/25	D.P.
1.	SUBMIT FOR PLAN APPROVAL	2025/02/05	D.P.

ENGINEERING DIVISION TECHNOLOGY SERVICES BRANCH 106 - 1155 PACIFIC AVE	
DESIGNED BY D.P.	CHECKED BY G.K., R.W., J.T.S.
DRAWN BY D.P.	APPROVED BY J.T.S.
HOR. SCALE: 1 : 250 VERTICAL: 1 : 10 DATE: 2025/02/25	



**THE CITY OF WINNIPEG**  
PUBLIC WORKS DEPARTMENT

**AMBERGATE DRIVE - SOUTH FRONTAGE ROAD**  
FROM AMBER TRAIL TO PIPELINE ROAD  
CONCRETE PAVEMENT REHABILITATION, NEW MULTI-USE ASPHALT PATHWAY, NEW CONCRETE SIDEWALK AND ASSOCIATED WORKS  
FROM STA. 1+70 TO STA. 2+50

CITY DRAWING NUMBER  
SE-25-109  
SHEET 10 OF 29  
**5**