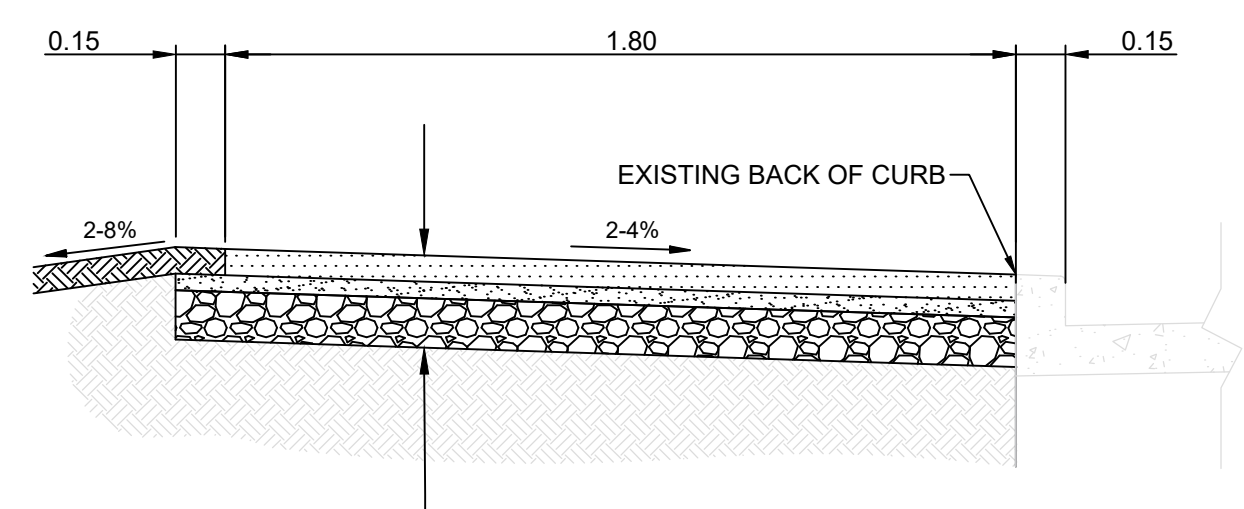


TYPICAL ASPHALT PATHWAY CROSS SECTION
N.T.S.



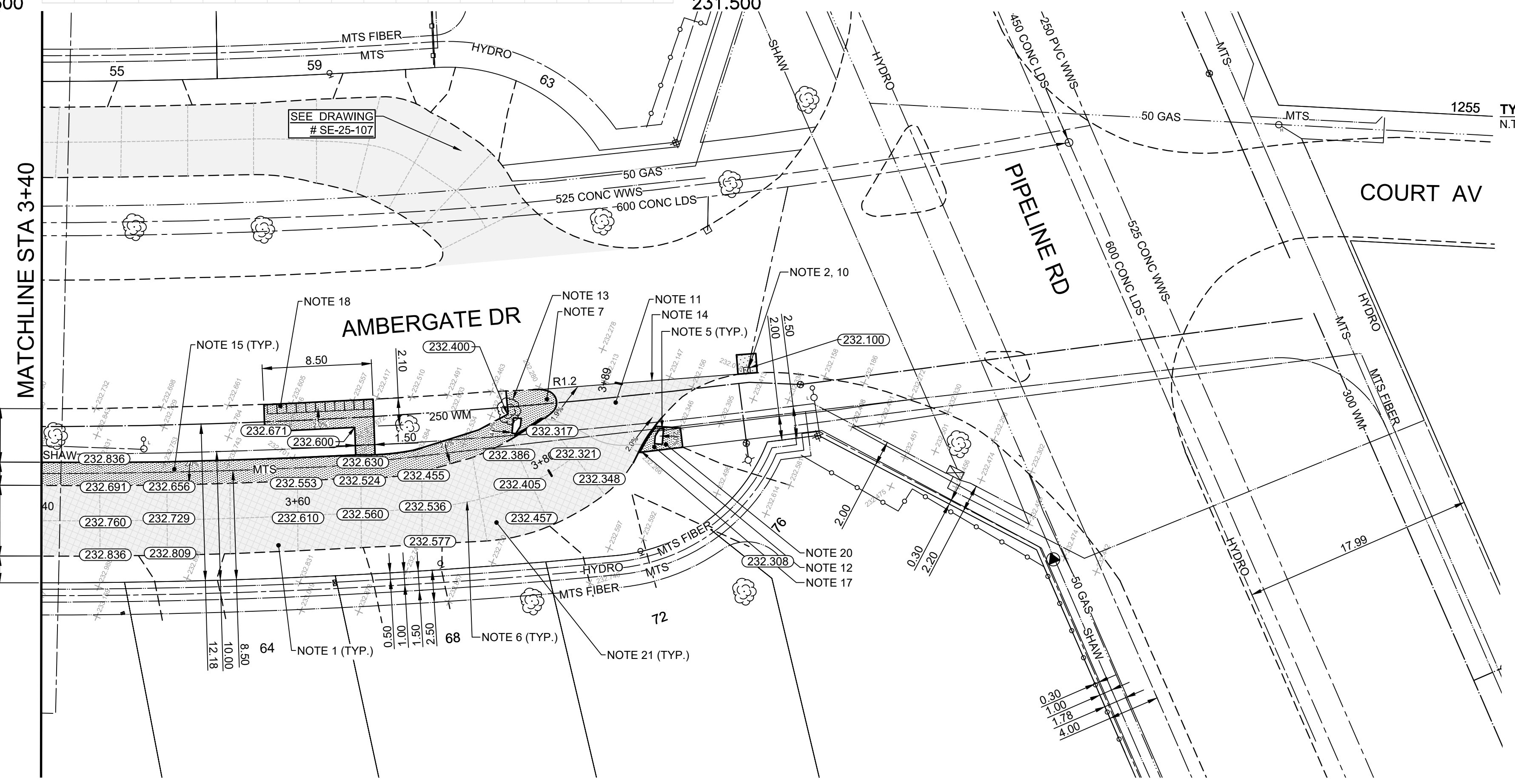
TYPICAL CONCRETE SIDEWALK CROSS SECTION
N.T.S.

CONSTRUCTION NOTES

1. CONSTRUCT NEW (+/- 40mm) MS1 ASPHALT OVERLAY (E16)
2. REMOVE EXISTING CONCRETE PAVEMENT AND CONSTRUCT NEW 150mm REINFORCED CONCRETE PAVEMENT
3. RENEW EXISTING 100mm CONCRETE SIDEWALK (SD-228A)
4. CONSTRUCT NEW CURB RAMP (SD-229D)
5. INSTALL NEW DETECTABLE WARNING SURFACE TILE (SD-229E)
6. PATCH EXISTING JOINTS WITH MS1 ASPHALT AS DIRECTED BY CONTRACT ADMINISTRATOR (E15)
7. RENEW EXISTING MONOLITHIC CONCRETE BULLNOSE (SD-227C)
8. RENEW EXISTING LIP CURB (SD-202A, SD-202C)
9. RENEW EXISTING BARRIER CURB (SD-205, SD-206A)
10. ADJUST FRAME TO GRADE
11. REMOVE EXISTING ASPHALT OVERLAY
12. CONSTRUCT NEW 150mm REINFORCED CONCRETE SIDEWALK
13. REMOVE EXISTING TREE (E13)
14. LIMIT OF ASPHALT OVERLAY
15. CONSTRUCT NEW 100mm CONCRETE SIDEWALK AS PER CROSS SECTION
16. REGRADE EXISTING PAVING STONES
17. RENEW EXISTING CURB RAMP (SD-229D)
18. REMOVE EXISTING SIDEWALK BLOCKS
19. CONSTRUCT NEW 75mm MS1 ASPHALT PATHWAY (ONE LIFT) AS PER CROSS SECTION (E16)
20. REMOVE EXISTING SIDEWALK
21. INSTALL TYPE B PAVEMENT REPAIR FABRIC (CW3140, E18)

GENERAL NOTES

- A. PAVEMENT DIMENSIONS ARE TO BACK OF CURB
- B. ALL CURB RADII UNDER 15.0m SHALL BE MODIFIED
- C. CURB REPLACEMENT AS DIRECTED BY CONTRACT ADMINISTRATOR
- D. CONTRACTOR TO CONFIRM THE LOCATION OF ALL UTILITIES/SERVICES IN THE FIELD PRIOR TO CONSTRUCTION
- E. ADJUST WATER VALVES AND CURB STOPS AS DIRECTED BY CONTRACT ADMINISTRATOR
- F. PAVEMENT REPAIRS SHOWN ARE A REPRESENTATIVE SAMPLE OF THE TENDER QUANTITIES
- G. ASPHALT TIE-INS ARE TO BE DETERMINED IN THE FIELD BY CONTRACT ADMINISTRATOR



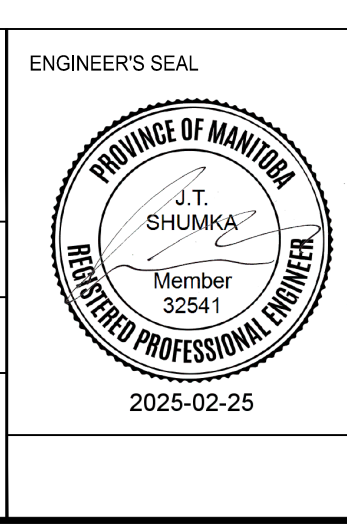
⊕	HYDRANT	◆	---	LDS/WWS	---	CONCRETE	---
⊗	VALVE	◆	---	WATERMAIN	---	CONCRETE SIDEWALK	---
⊙	CURB STOP	◆	---	GAS	---	ASPHALT	---
⊖	MANHOLE	◆	---	TRAFFIC SIGNALS	---	PAVEMENT REPAIR FABRIC	---
□	CATCH BASIN	◆	---	HYDRO/STREET LIGHT	---	PAVING STONES	---
△	CATCH PIT/CURB INLET	◆	---	MTS/SHAW	---	WOOD FENCE	---
○	HYDRO POLE	◆	---	CURB RENEWAL	---	CONCRETE FENCE	---
○	LIGHT STANDARD	◆	---	PROPERTY LINE	---	LEGEND - PLAN	PROPOSED
○	TRAFFIC SIGNAL POLE	◆	---	RAMP CURB	---	NORTH GUTTER	---
⊕	SURVEY BAR	◆	---	ELEVATIONS	(231.000)	CENTER LINE	---
⊕	GEODETIC BENCH MARK	◆	---	TREE	---	SOUTH GUTTER	---
---	EXISTING	---	---	EXISTING	---	LEGEND - PROFILE	PROPOSED

B.M. ELEV.		
NO.	REVISIONS	DATE BY
2.	ISSUED FOR TENDER	2025/02/25 D.P.
1.	SUBMIT FOR PLAN APPROVAL	2025/02/05 D.P.

ENGINEERING DIVISION
TECHNOLOGY SERVICES BRANCH
106 - 1155 PACIFIC AVE

DESIGNED BY: D.P. CHECKED BY: G.K., R.W., J.T.S.
DRAWN BY: D.P. APPROVED BY: J.T.S.

HOR. SCALE: 1 : 250
VERTICAL: 1 : 10
DATE: 2025/02/25



ISSUED FOR TENDER

METRIC
WHOLE NUMBERS INDICATE MILLIMETERS
DECIMALIZED NUMBERS INDICATE METERS

TENDER NO. 2-2025

THE CITY OF WINNIPEG
PUBLIC WORKS DEPARTMENT

AMBERGATE DRIVE - SOUTH FRONTAGE ROAD
FROM AMBER TRAIL TO PIPELINE ROAD
CONCRETE PAVEMENT REHABILITATION, NEW MULTI-USE ASPHALT PATHWAY, NEW CONCRETE SIDEWALK AND ASSOCIATED WORKS
FROM STA. 3+40 TO STA. 3+89

CITY DRAWING NUMBER SE-25-111
SHEET 12 OF 29
7