

- CONSTRUCTION NOTES**
- CONSTRUCT NEW (+/- 40mm) MS1 ASPHALT OVERLAY (E16)
 - REMOVE EXISTING CONCRETE PAVEMENT AND CONSTRUCT NEW 150mm REINFORCED CONCRETE PAVEMENT
 - REMOVE EXISTING ASPHALT OVERLAY
 - INSTALL TYPE B PAVEMENT REPAIR FABRIC (CW3140, E18)
 - RENEW EXISTING 100mm CONCRETE SIDEWALK (SD-228A)
 - CONSTRUCT NEW CURB RAMP (SD-229D)
 - CONSTRUCT NEW MODIFIED BARRIER CURB (SD-203B)
 - INSTALL NEW DETECTABLE WARNING SURFACE TILE (SD-229E)
 - INSTALL NEW CATCH PIT WITH MOUNTABLE CURB AND GUTTER INLET FRAME (SD-023, AP-015, AP-016), AND CONNECT TO EXISTING CATCH BASIN WITH 250mmØ PVC PIPE AS PER CW 2130
 - REGRADE EXISTING SIDEWALK BLOCKS
 - REGRADE EXISTING PAVING STONES
 - RENEW EXISTING CURB RAMP (SD-229D)
 - REMOVE EXISTING CATCH PIT AS PER CW2130
 - ADJUST FRAME TO GRADE
 - RENEW EXISTING LIP CURB (SD-202A)
 - REMOVE EXISTING SIDEWALK
 - CONSTRUCT NEW 100mm CONCRETE SIDEWALK (SD-228A)
 - RENEW EXISTING MONOLITHIC CONCRETE BULLNOSE (SD-227C)
 - LIMIT OF ASPHALT OVERLAY
 - INSTALL NEW 1800 CATCH BASIN WITH STANDARD FRAME AND GRATED COVER (SD-024, AP-006, AP-008) AND CONNECT TO EXISTING 900 CONC LDS WITH 250mmØ PVC PIPE AS PER CW2130
 - RENEW EXISTING 150mm REINFORCED CONCRETE SIDEWALK (SD-236)
- GENERAL NOTES**
- PAVEMENT DIMENSIONS ARE TO BACK OF CURB
 - ALL CURB RADII UNDER 15.0m SHALL BE MODIFIED
 - CURB REPLACEMENT AS DIRECTED BY CONTRACT ADMINISTRATOR
 - CONTRACTOR TO CONFIRM THE LOCATION OF ALL UTILITIES/SERVICES IN THE FIELD PRIOR TO CONSTRUCTION
 - ADJUST WATER VALVES AND CURB STOPS AS DIRECTED BY CONTRACT ADMINISTRATOR
 - PAVEMENT REPAIRS SHOWN ARE A REPRESENTATIVE SAMPLE OF THE TENDER QUANTITIES
 - ASPHALT TIE-INS ARE TO BE DETERMINED IN THE FIELD BY CONTRACT ADMINISTRATOR

ISSUED FOR TENDER
TENDER NO. 2-2025

SYMBOL	DESCRIPTION	SYMBOL	DESCRIPTION	SYMBOL	DESCRIPTION	SYMBOL	DESCRIPTION
⊕	HYDRANT	◆	LDS/WWS	---	CONCRETE	---	LOCATION APPROVED
⊗	VALVE	●	WATERMAIN	---	CONCRETE SIDEWALK	---	UNDERGROUND STRUCTURES
⊙	CURB STOP	●	GAS	---	ASPHALT	---	
○	MANHOLE	●	TRAFFIC SIGNALS	---	PAVEMENT REPAIR FABRIC	---	
□	CATCH BASIN	●	HYDRO/STREET LIGHT	---	PAVING STONES	---	
△	CATCH PIT/CURB INLET	▲	MTS/SHAW	---	WOOD FENCE	---	
⊕	HYDRO POLE	●	CURB RENEWAL	---	LEGEND - PLAN	---	
⊕	LIGHT STANDARD	●	PROPERTY LINE	---	EXISTING	---	
⊕	TRAFFIC SIGNAL POLE	●	RAMP CURB	---	EAST/NORTH GUTTER	---	
⊕	SURVEY BAR	●	ELEVATIONS (231.000)	---	CENTER LINE	---	
⊕	GEODETIC BENCH MARK	●	TREE	---	WEST/SOUTH GUTTER	---	
---	EXISTING	---	LEGEND - PLAN	---	---	---	
---	PROPOSED	---	LEGEND - PROFILE	---	---	---	

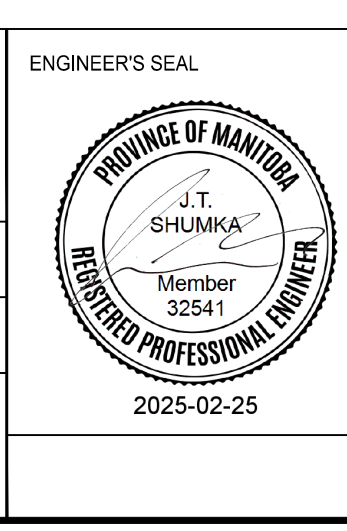
LOCATION APPROVED UNDERGROUND STRUCTURES

NO.	REVISIONS	DATE	BY
2.	ISSUED FOR TENDER	2025/02/25	D.P.
1.	SUBMIT FOR PLAN APPROVAL	2025/02/05	D.P.

**ENGINEERING DIVISION
TECHNOLOGY SERVICES BRANCH
106 - 1155 PACIFIC AVE**

DESIGNED BY	D.P.	CHECKED BY	G.K., R.W., J.T.S.
DRAWN BY	D.P.	APPROVED BY	J.T.S.

HOR. SCALE: 1 : 250
VERTICAL: 1 : 10
DATE: 2025/02/24



METRIC
WHOLE NUMBERS INDICATE MILLIMETERS
DECIMALIZED NUMBERS INDICATE METERS

**THE CITY OF WINNIPEG
PUBLIC WORKS DEPARTMENT**

BLECHNER DRIVE
FROM ADSUM DRIVE TO PIPELINE ROAD
CONCRETE PAVEMENT REHABILITATION AND ASSOCIATED WORKS
FROM STA. 4+30 TO STA. 5+40

CITY DRAWING NUMBER SE-25-115
SHEET 16 OF 29
4