

- CONSTRUCTION NOTES**
- CONSTRUCT NEW (+/- 40mm) MS1 ASPHALT OVERLAY (E16)
 - REMOVE EXISTING CONCRETE PAVEMENT AND CONSTRUCT NEW 150mm REINFORCED CONCRETE PAVEMENT
 - REMOVE EXISTING ASPHALT OVERLAY
 - INSTALL TYPE B PAVEMENT REPAIR FABRIC (CW3140, E18)
 - RENEW EXISTING 100mm CONCRETE SIDEWALK (SD-228A)
 - CONSTRUCT NEW CURB RAMP (SD-229D)
 - CONSTRUCT NEW MODIFIED BARRIER CURB (SD-203B)
 - INSTALL NEW DETECTABLE WARNING SURFACE TILE (SD-229E)
 - INSTALL NEW CATCH PIT WITH MOUNTABLE CURB AND GUTTER INLET FRAME (SD-023, AP-015, AP-016), AND CONNECT TO EXISTING CATCH BASIN WITH 250mmØ PVC PIPE AS PER CW 2130
 - REGRADE EXISTING SIDEWALK BLOCKS
 - REGRADE EXISTING PAVING STONES
 - RENEW EXISTING CURB RAMP (SD-229D)
 - REMOVE EXISTING CATCH PIT AS PER CW2130
 - ADJUST FRAME TO GRADE
 - RENEW EXISTING LIP CURB (SD-202A)
 - REMOVE EXISTING SIDEWALK
 - CONSTRUCT NEW 100mm CONCRETE SIDEWALK (SD-228A)
 - RENEW EXISTING MONOLITHIC CONCRETE BULLNOSE (SD-227C)
 - LIMIT OF ASPHALT OVERLAY
 - INSTALL NEW 1800 CATCH BASIN WITH STANDARD FRAME AND GRATED COVER (SD-024, AP-006, AP-008) AND CONNECT TO EXISTING 900 CONC LDS WITH 250mmØ PVC PIPE AS PER CW2130
 - RENEW EXISTING 150mm REINFORCED CONCRETE SIDEWALK (SD-236)
- GENERAL NOTES**
- PAVEMENT DIMENSIONS ARE TO BACK OF CURB
 - ALL CURB RADII UNDER 15.0m SHALL BE MODIFIED
 - CURB REPLACEMENT AS DIRECTED BY CONTRACT ADMINISTRATOR
 - CONTRACTOR TO CONFIRM THE LOCATION OF ALL UTILITIES/SERVICES IN THE FIELD PRIOR TO CONSTRUCTION
 - ADJUST WATER VALVES AND CURB STOPS AS DIRECTED BY CONTRACT ADMINISTRATOR
 - PAVEMENT REPAIRS SHOWN ARE A REPRESENTATIVE SAMPLE OF THE TENDER QUANTITIES
 - ASPHALT TIE-INS ARE TO BE DETERMINED IN THE FIELD BY CONTRACT ADMINISTRATOR

METRIC
WHOLE NUMBERS INDICATE MILLIMETERS
DECIMALIZED NUMBERS INDICATE METERS

ISSUED FOR TENDER
TENDER NO. 2-2025

EXISTING	LEGEND - PLAN	PROPOSED	EXISTING	LEGEND - PLAN	PROPOSED	EXISTING	LEGEND - PROFILE	PROPOSED
⊕	HYDRANT	◆	---	LDS/WWS	---	---	CONCRETE	---
⊗	VALVE	◆	---	WATERMAIN	---	---	CONCRETE SIDEWALK	---
⊙	CURB STOP	◆	---	GAS	---	---	ASPHALT	---
○	MANHOLE	●	---	TRAFFIC SIGNALS	---	---	PAVEMENT REPAIR FABRIC	---
□	CATCH BASIN	●	---	HYDRO/STREET LIGHT	---	---	PAVING STONES	---
△	CATCH PIT/CURB INLET	▲	---	MTS/SHAW	---	---	WOOD FENCE	---
⊙	HYDRO POLE	◆	---	CURB RENEWAL	---	---	LEGEND - PLAN	PROPOSED
⊙	LIGHT STANDARD	◆	---	PROPERTY LINE	---	---	LEGEND - PROFILE	PROPOSED
⊙	TRAFFIC SIGNAL POLE	◆	---	RAMP CURB	---	---	EAST/NORTH GUTTER	---
⊕	SURVEY BAR	◆	---	ELEVATIONS	(231.000)	---	CENTER LINE	---
⊕	GEODETIC BENCH MARK	◆	---	TREE	---	---	WEST/SOUTH GUTTER	---

LOCATION APPROVED
UNDERGROUND STRUCTURES

DATE: _____

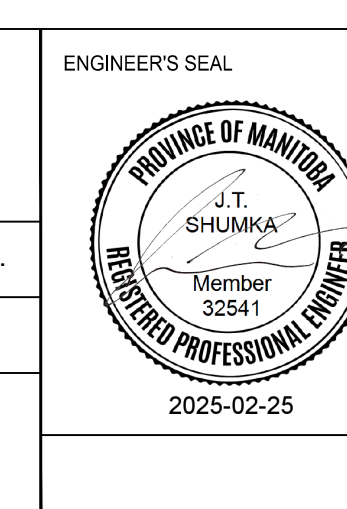
NOTE:
LOCATION OF UNDERGROUND STRUCTURES AS SHOWN ARE BASED ON THE BEST INFORMATION AVAILABLE. BUT NO GUARANTEE IS GIVEN THAT ALL EXISTING UTILITIES ARE SHOWN OR THAT THE GIVEN LOCATIONS ARE EXACT. CONFIRMATION OF EXISTENCE AND EXACT LOCATION OF ALL SERVICES MUST BE OBTAINED FROM THE INDIVIDUAL UTILITIES BEFORE PROCEEDING WITH CONSTRUCTION.

ENGINEERING DIVISION
TECHNOLOGY SERVICES BRANCH
106 - 1155 PACIFIC AVE

DESIGNED BY: D.P.
CHECKED BY: G.K., R.W., J.T.S.

DRAWN BY: D.P.
APPROVED BY: J.T.S.

DATE: 2025/02/24



THE CITY OF WINNIPEG
PUBLIC WORKS DEPARTMENT

BLECHNER DRIVE
FROM ADSUM DRIVE TO PIPELINE ROAD
CONCRETE PAVEMENT REHABILITATION AND ASSOCIATED WORKS
FROM STA. 9+70 TO STA. 10+30

CITY DRAWING NUMBER
SE-25-120
SHEET 21 OF 29

9