

- CONSTRUCTION NOTES**
- CONSTRUCT NEW (+/- 40mm) MS1 ASPHALT OVERLAY (E16)
 - REMOVE EXISTING CONCRETE PAVEMENT AND CONSTRUCT NEW 150mm REINFORCED CONCRETE PAVEMENT
 - RENEW EXISTING 100mm CONCRETE SIDEWALK (SD-228A)
 - RENEW EXISTING CURB RAMP (SD-229D)
 - CONSTRUCT NEW MODIFIED BARRIER CURB (SD-203B)
 - INSTALL NEW DETECTABLE WARNING SURFACE TILE (SD-229E)
 - INSTALL TYPE B PAVEMENT REPAIR FABRIC (CW3140, E18)
 - RENEW EXISTING LIP CURB (SD-202A, SD-202C)
 - REMOVE EXISTING ASPHALT OVERLAY
 - RENEW EXISTING MONOLITHIC CONCRETE BULLNOSE (SD-227C)
 - REGRADE EXISTING PAVING STONES
 - RENEW EXISTING 150mm REINFORCED CONCRETE SIDEWALK (SD-236)
 - LIMIT OF ASPHALT OVERLAY
 - RENEW EXISTING MONOLITHIC CONCRETE MEDIAN SLAB (SD-226A)
 - REGRADE EXISTING SIDEWALK BLOCKS
- GENERAL NOTES**
- PAVEMENT DIMENSIONS ARE TO BACK OF CURB
 - ALL CURB RADII UNDER 15.0m SHALL BE MODIFIED
 - CURB REPLACEMENT AS DIRECTED BY CONTRACT ADMINISTRATOR
 - CONTRACTOR TO CONFIRM THE LOCATION OF ALL UTILITIES/SERVICES IN THE FIELD PRIOR TO CONSTRUCTION
 - ADJUST WATER VALVES AND CURB STOPS AS DIRECTED BY CONTRACT ADMINISTRATOR
 - PAVEMENT REPAIRS SHOWN ARE A REPRESENTATIVE SAMPLE OF THE TENDER QUANTITIES
 - ASPHALT TIE-INS ARE TO BE DETERMINED IN THE FIELD BY CONTRACT ADMINISTRATOR

ISSUED FOR TENDER
TENDER NO. 2-2025

EXISTING	LEGEND - PLAN	PROPOSED	EXISTING	LEGEND - PLAN	PROPOSED	EXISTING	LEGEND - PROFILE	PROPOSED
⊕	HYDRANT	◆	---	LDS/WWS	---	▨	CONCRETE	▨
⊗	VALVE	◆	---	WATERMAIN	---	▨	CONCRETE SIDEWALK	▨
⊙	CURB STOP	◆	---	GAS	---	▨	ASPHALT	▨
○	MANHOLE	●	---	TRAFFIC SIGNALS	---	▨	PAVEMENT REPAIR FABRIC	▨
□	CATCH BASIN	●	---	HYDRO/STREET LIGHT	---	▨	WOOD FENCE	▨
△	CATCH PIT/CURB INLET	▲	---	MTS/SHAW	---	▨	LEGEND - PLAN	▨
○	HYDRO POLE	●	---	CURB RENEWAL	---	▨	LEGEND - PROFILE	▨
○	LIGHT STANDARD	●	---	PROPERTY LINE	---	▨	NORTH GUTTER	▨
○	TRAFFIC SIGNAL POLE	●	---	RAMP CURB	---	▨	CENTER LINE	▨
+	SURVEY BAR	+	---	ELEVATIONS	(231.000)	▨	SOUTH GUTTER	▨
⊕	GEODETIC BENCH MARK	⊕	---	TREE	---	▨		▨

LOCATION APPROVED UNDERGROUND STRUCTURES

DATE: _____

NOTE: LOCATION OF UNDERGROUND STRUCTURES AS SHOWN ARE BASED ON THE BEST INFORMATION AVAILABLE. BUT NO GUARANTEE IS GIVEN THAT ALL EXISTING UTILITIES ARE SHOWN OR THAT THE GIVEN LOCATIONS ARE EXACT. CONFIRMATION OF EXISTENCE AND EXACT LOCATION OF ALL SERVICES MUST BE OBTAINED FROM THE INDIVIDUAL UTILITIES BEFORE PROCEEDING WITH CONSTRUCTION.

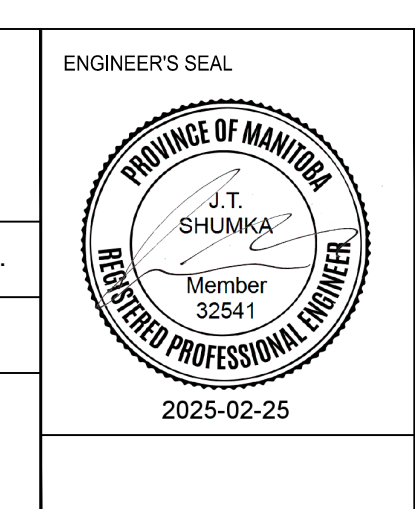
**ENGINEERING DIVISION
TECHNOLOGY SERVICES BRANCH
106 - 1155 PACIFIC AVE**

DESIGNED BY: D.P. CHECKED BY: G.K., R.W., J.T.S.

DRAWN BY: D.P. APPROVED BY: J.T.S.

HOR. SCALE: 1 : 250
VERTICAL: 1 : 10

DATE: 2025/02/25



METRIC
WHOLE NUMBERS INDICATE MILLIMETERS
DECIMALIZED NUMBERS INDICATE METERS

**THE CITY OF WINNIPEG
PUBLIC WORKS DEPARTMENT**

MARNIE PLACE
FROM JEFFERSON AVENUE TO BLECHNER DRIVE
CONCRETE PAVEMENT REHABILITATION AND ASSOCIATED WORKS
FROM STA. 1+00 TO STA. 2+10

CITY DRAWING NUMBER: SE-25-121
SHEET 22 OF 29

1