

CONSTRUCTION NOTES:

- ALL WORK AND MATERIALS TO BE IN ACCORDANCE WITH LATEST REVISION OF THE CITY OF WINNIPEG STANDARD CONSTRUCTION SPECIFICATIONS.
- LEGAL PLAN AND UNDERGROUND INFORMATION FROM CITY OF WINNIPEG LBIS.
- CONTRACTOR TO TAKE PRECAUTIONARY STEPS TO AVOID DAMAGE FROM CONSTRUCTION ACTIVITIES TO TREES WITHIN THE LIMITS OF CONSTRUCTION. REFER TO SPECIFICATION E6 PROTECTION OF EXISTING TREES.
- LOCATION OF EXISTING UTILITIES/SERVICES TO BE CONFIRMED IN THE FIELD BY THE CONTRACTOR.
- ADJUST EXISTING WATER VALVES AND WATER SERVICE CURB STOPS TO GRADE. WATER SERVICES TO BE INSULATED AS PER SD-018 WITH 100mm THICK x 2700mm WIDE TOP OF INSULATION OR RENEWED/INSULATED AS INDICATED ON PLAN IN ACCORDANCE TO CW-2110. VALVES TO BE OPERATED BY CITY OF WINNIPEG CREWS.
- MODIFIED BARRIER CURB SD-203C TO BE USED AT ALL INTERSECTION RADII.
- LIMITS OF SIDEWALK RECONSTRUCTION TO BE FINALIZED IN THE FIELD BY THE CONTRACT ADMINISTRATOR. INSTALL SIDEWALK EXPANSION JOINTS AS PER SD-228AA. CONTRACT ADMINISTRATOR WILL LAY OUT FINAL LOCATIONS OF SIDEWALK EXPANSION JOINTS.
- ADJUST MANHOLE AND CATCH BASIN RIMS TO NEW GRADES. REMOVE AND REPLACE ALL MANHOLE FRAMES AND COVERS IN PAVEMENT. REPAIR/REPLACE BENCHING AND RISERS AS DIRECTED BY THE CONTRACT ADMINISTRATOR.
- CONSTRUCT SIDEWALK CONNECTIONS TO PRIVATE APPROACHES AS PER SD-228A TO LIMITS AS SHOWN. ALL PRIVATE SIDEWALKS TO BE ADJUSTED TO NEW SIDEWALK OR TOP OF CURB ELEVATIONS AS REQUIRED. SIDEWALKS TO BE REPLACED WITH LIKE MATERIALS.
- CB LEADS AND CP LEADS TO BE INSTALLED TO INVERT ELEVATIONS AS SHOWN. ALL CB LEADS TO BE INSTALLED AT MIN 1.0% SLOPE AND AS DIRECTED BY CONTRACT ADMINISTRATOR. ALL CP LEADS TO BE INSTALLED AT MIN 2.0% SLOPE AND AS DIRECTED BY CONTRACT ADMINISTRATOR.
- LIMITS OF BOULEVARD GRADING TO BE FINALIZED IN THE FIELD BY THE CONTRACT ADMINISTRATOR.
- CONTRACTOR TO CONFIRM LOCATION AND LIMITS OF SEWER REPAIRS AS INDICATED ON THE DRAWINGS BY PERFORMING VIDEO INSPECTION AND REVIEWING WITH THE CONTRACT ADMINISTRATOR PRIOR TO CONSTRUCTION.
- LAMP STANDARDS, HYDRO POLES AND ANCHORS THAT REQUIRE TEMPORARY SUPPORT, REMOVAL OR REPLACEMENT, TO BE DONE AT THE EXPENSE OF THE CONTRACTOR, AS NECESSARY. REFER TO SPECIFICATION E24-WORKING AROUND MANITOBA HYDRO POLES.
- INSTALL 6.0 m OF 150 mm SUBDRAIN TO CATCH BASINS IN BOTH DIRECTIONS WITH END CAPS PARALLEL TO ROADWAY AS PER SD-245 OR AS NOTED.
- COMPLETE CATCH BASIN/CATCH PIT CURB AND GUTTER INLET ISOLATIONS IN ACCORDANCE WITH SD-220D DETAILS.
- CONSTRUCT 150 EXPOSED FACE BARRIER CURB AS PER SD-200A, OR AS OTHERWISE NOTED.
- CONSTRUCT 75 LIP CURB WITH INTEGRAL APPROACH SD-202CA.
- SIDEWALK RENEWALS TO PROVIDE 2.0% CROSSFALL TOWARDS ROAD OR AS NOTED.
- ADD 200.000 TO ABBREVIATED ELEVATIONS TO OBTAIN GEODETIC ELEVATIONS.
- ALL DIMENSIONS ARE TO BACK OF CURB.

TENDER
DRAWING

NOT TO BE
USED FOR
CONSTRUCTION

ENGINEERS
GEOSCIENTISTS
MANITOBA

Certificate of Authorization
Tetra Tech Canada Inc.
No. 6499

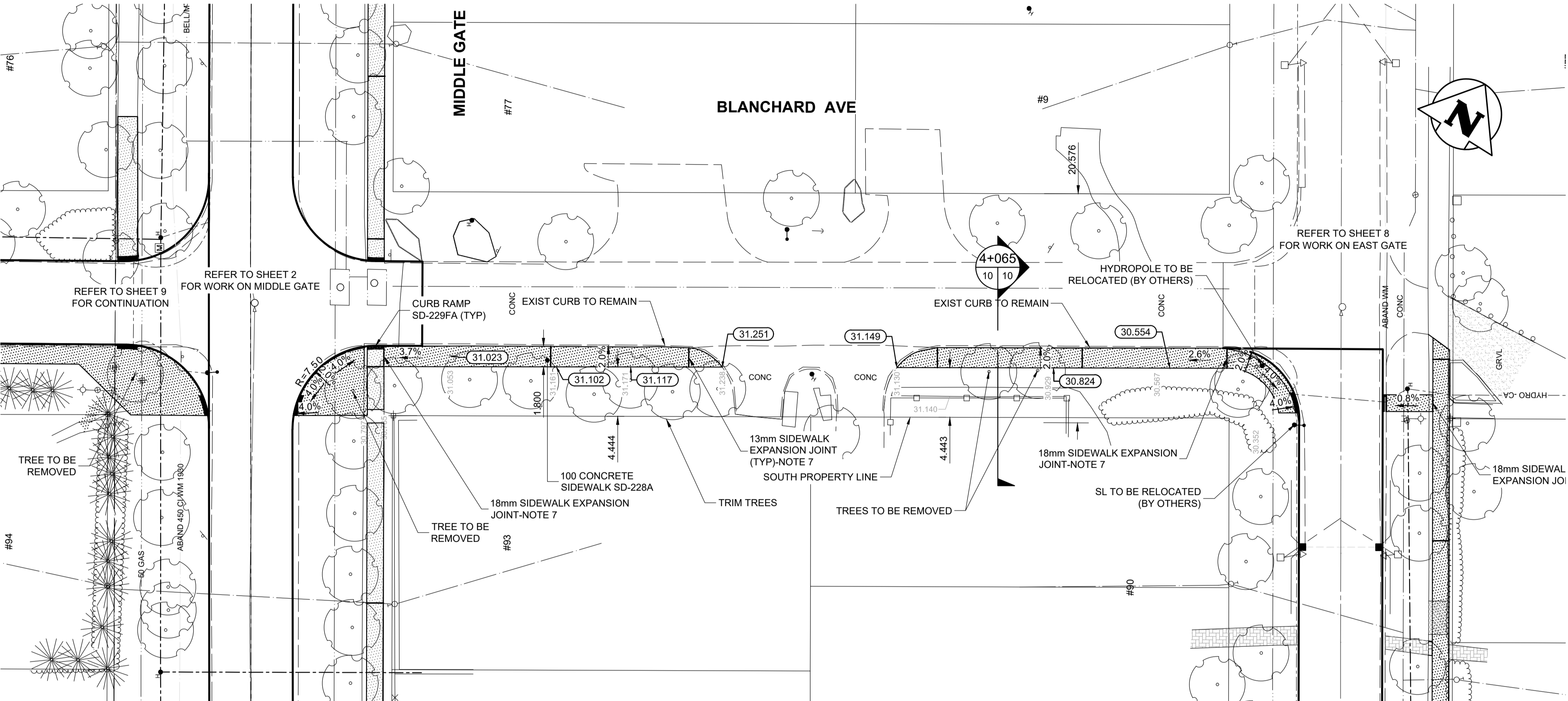
TENDER #201-2025

METRIC

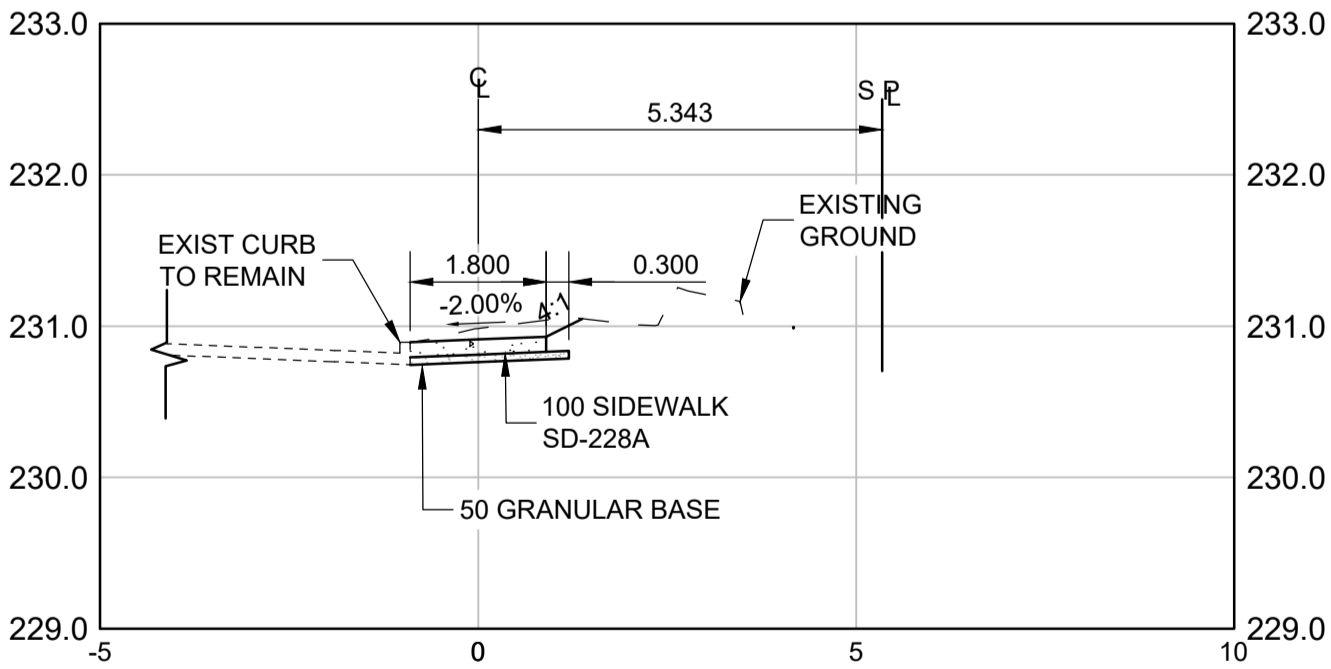
WHOLE NUMBERS INDICATE MILLIMETRES
DECIMALIZED NUMBERS INDICATE METRES

BLANCHARD AVE - 4+065

Scale H=1:100 V=1:50



CONTROL LINE GEOMETRY COORDINATES		
POINT/STATION	NORTHING	EASTING
BP/POT 4+000.00	5526542.279	632475.124
PC 4+008.90	5526547.040	632482.638
PT 4+012.32	5526549.835	632484.419
PC 4+014.37	5526551.872	632484.682
PT 4+017.81	5526554.677	632486.477
PC 4+080.47	5526587.978	632539.554
PT 4+083.79	5526588.411	632542.745
PC 4+086.61	5526587.603	632545.442
PT 4+089.93	5526588.038	632548.639
EP/POT 3+089.14	5526590.117	632551.942



EXISTING	LEGEND-PLAN	PROPOSED	EXISTING	LEGEND-PLAN	PROPOSED	EXISTING	LEGEND-PROFILE	PROPOSED
	HYDRANT			CONCRETE			WATERMAIN	
	VALVE			ASPHALT-RECONSTRUCTION			LAND DRAINAGE SEWER	
	MANHOLE			ASPHALT-REHABILITATION			WASTE WATER SEWER	
	CATCH BASIN			SIDEWALK			HYDRANT	
	CATCH PIT			PAVING STONES			VALVE	
	WATERMAIN			STAMPED CONCRETE			Q PROFILE	
	LAND DRAINAGE SEWER			PROPERTY LINE			NORTH/WEST GUTTER	
	WASTE WATER SEWER			ELEVATION			SOUTH/EAST GUTTER	
	HYDRO			CURB RAMP			NORTH/WEST PROPERTY LINE	
	M.T.S.			LS/ HP			SOUTH/EAST PROPERTY LINE	
	GAS							

UNDERGROUND STRUCTURES

LOCATION OF UNDERGROUND STRUCTURES AS SHOWN ARE BASED ON THE BEST INFORMATION AVAILABLE. BUT NO GUARANTEE IS GIVEN THAT ALL EXISTING UTILITIES ARE SHOWN OR THAT THE GIVEN LOCATIONS ARE EXACT. CONFIRMATION OF EXISTENCE AND EXACT LOCATION OF ALL SERVICES MUST BE OBTAINED FROM THE INDIVIDUAL UTILITIES BEFORE PROCEEDING WITH CONSTRUCTION.

B.M.
ELEV.

NO.	REVISIONS	DATE	BY
0	ISSUED FOR TENDER	25.04.04	JC



TETRA TECH

DESIGNED BY	RL	REVIEWED BY	DL
DRAWN BY	CF	APPROVED BY	JC
SCALE:	H = 1:250 OR AS NOTED		
	RELEASED FOR CONSTRUCTION		
DATE	2025.04.04	DATE	



CONSULTANT DRAWING NO.
704-INF-MB03019-01-DWG-C0010



THE CITY OF WINNIPEG
PUBLIC WORKS DEPARTMENT
ENGINEERING DIVISION

2025 LOCAL STREETS RENEWAL PROGRAM
MIDDLE GATE AND VARIOUS LOCATIONS

SIDEWALK CONSTRUCTION
BLANCHARD AVENUE (STA 4+000 TO 4+093.84)
PLAN AND PROFILE

CITY DRAWING NUMBER

P-3593-10

SHEET OF 10 12

DWG. NO.

C0010