

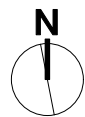
CONSTRUCTION NOTES

1. ALL FENCING SHALL BE IN ACCORDANCE WITH THESE DRAWINGS AND WITH CW 3550
2. ALL COMPONENTS SHALL BE HOT DIP GALVANIZED
3. CONCRETE SHALL BE IN ACCORDANCE WITH THESE DRAWINGS AND CW2160

Notes:

1. All Fence Measurements are Post to Post O/C
2. Layout Subject to Contract Administrator Approval
3. Notes and Dimensions in Grey Refer to Work by Others

1.1 N.E Layout
Scale: 1:200



CONTRACTOR TO CONFIRM ALL DIMENSIONS AND REPORT ANY DISCREPANCIES TO CONTRACT ADMINISTRATOR PRIOR TO CONSTRUCTION. LOCATION OF UNDERGROUND STRUCTURES AS SHOWN ARE BASED ON THE BEST INFORMATION AVAILABLE BUT NO GUARANTEE IS GIVEN THAT ALL EXISTING UTILITIES ARE SHOWN OR THAT THE GIVEN LOCATIONS ARE EXACT. CONFIRMATION OF EXISTENCE AND EXACT LOCATION OF ALL SERVICES MUST BE OBTAINED FROM THE INDIVIDUAL UTILITIES BEFORE PROCEEDING WITH CONSTRUCTION.



THE CITY OF WINNIPEG
Planning, Property and Development Department
Planning and Land Use Division
Unit 15 - 30 Fort Street, Winnipeg, MB, (R3C 4X5)

DESIGNED BY	MA	CHECKED BY	
DRAWN BY	MA	APPROVED BY	
HORIZ. SCALE	1:200		
VERT. SCALE			
DATE	February 2025		

MANAGER, PARK AND OPEN SPACES	DATE
MANAGER, PLANNING AND LAND USE DIVISION	DATE

DRAWING TITLE	DRAWING NO.
Morse Place CC Baseball Diamond Redevelopment Layout Plan	M.35 - D
SITE ADDRESS 700 Munroe Avenue	BID OPPORTUNITY NO. 210-2025