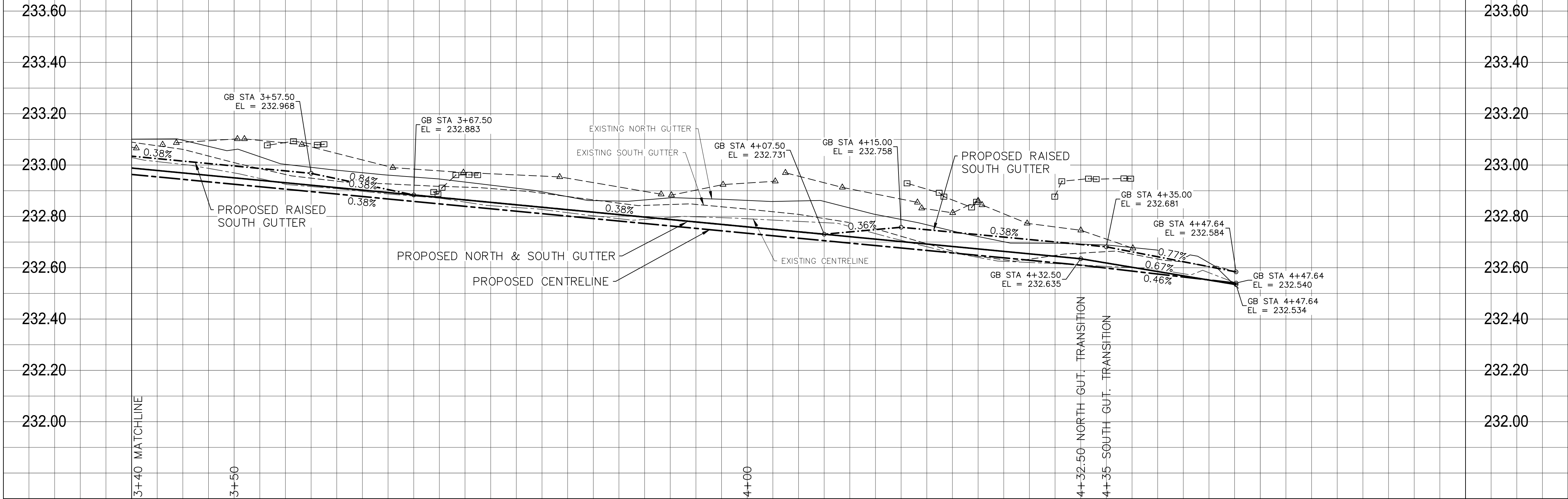
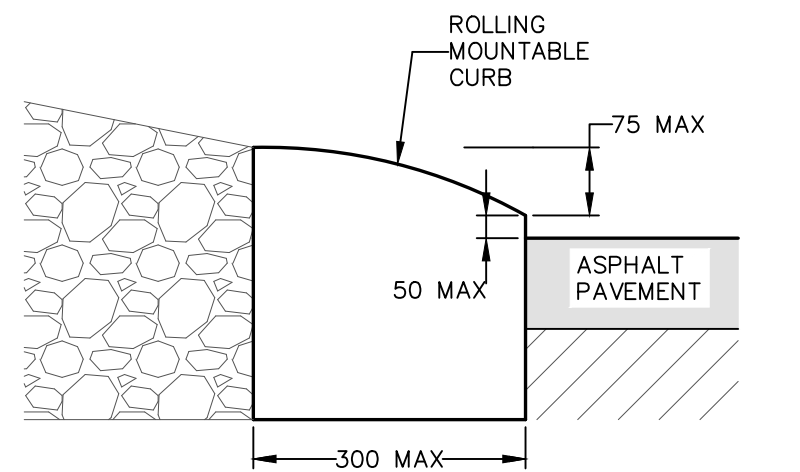
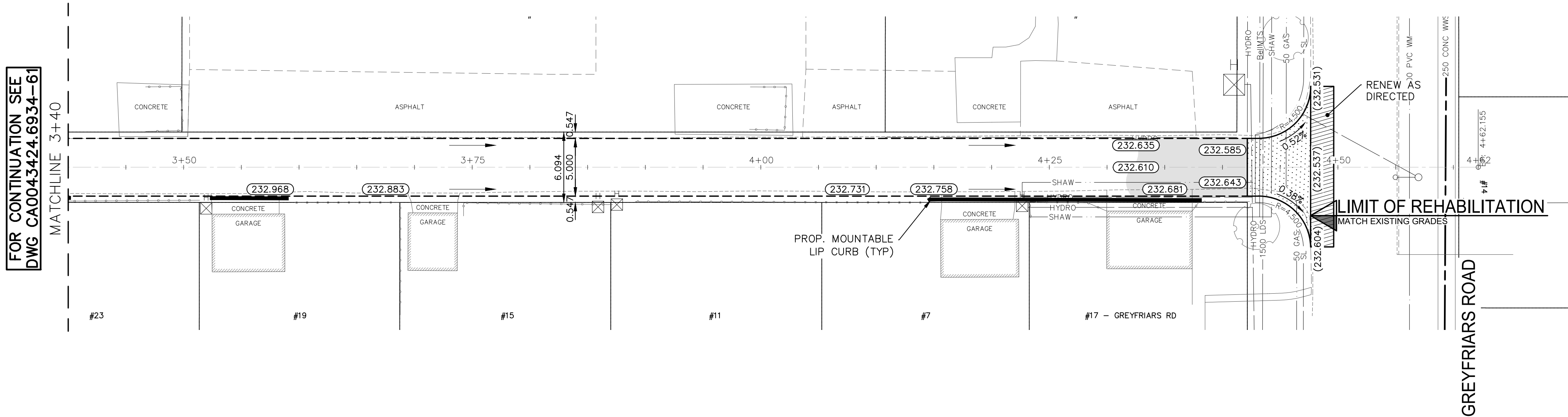


Apr 07, 2025 - 2:34pm
P:\2024\CA0043424.6934 - CA-25-R-04 Local Streets\02 Drawings\03_Work_Dwg\CA0043424.6934_CA_25-R-04_Killarney_Boyer_Alley_Profile.dwg - tab:227-2025_CA0043424.6934_62-RD

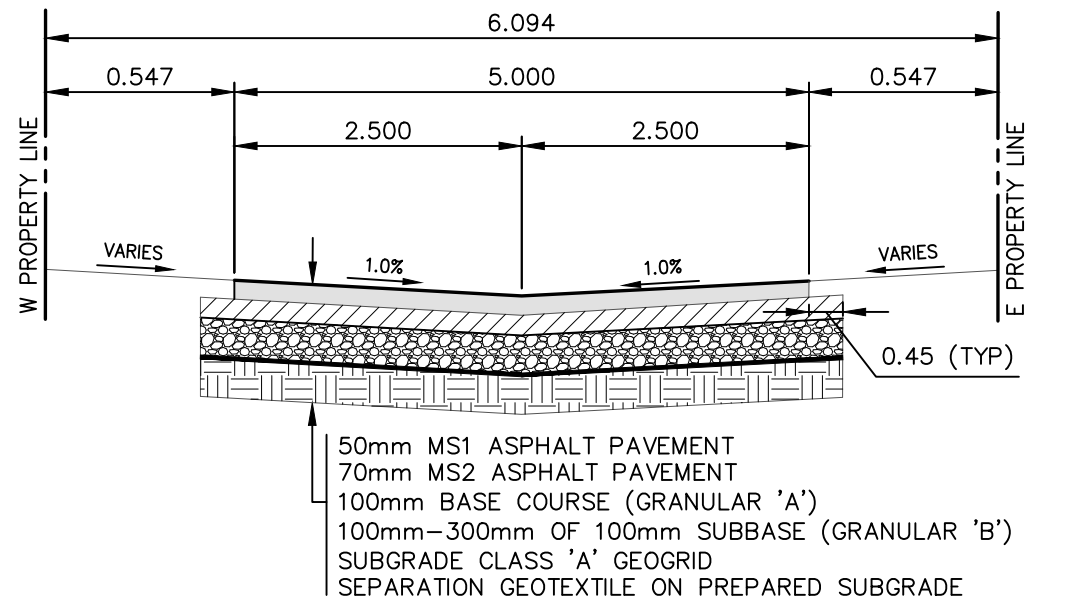


ALLEY PAVEMENT PROFILE
SCALE: 1:250 HOR
1:10 VER

KILLARNEY AVENUE



TYPICAL MOUNTABLE LIP CURB DETAIL
NTS



TYPICAL CROSS-SECTION
NTS

- NOTES:
1. ALL WORK AND MATERIALS TO BE IN ACCORDANCE WITH THE LATEST REVISION OF THE CITY OF WINNIPEG STANDARD CONSTRUCTION SPECIFICATIONS.
 2. CONTRACTOR TO CONFIRM THE LOCATION OF ALL UTILITIES/SERVICES IN THE FIELD PRIOR TO CONSTRUCTION.
 3. ALL ROADWAY DIMENSIONS SHOWN ARE TO EDGE OF PAVEMENT.
 4. EXISTING ASPHALT TO BE PLANED AS SHOWN OR AS DIRECTED BY CONTRACT ADMINISTRATOR.
 5. 150mm PARTIAL CONCRETE SLAB PATCHES SHOWN ARE ONLY A REPRESENTATIVE APPROXIMATION OF THE TENDERED QUANTITIES.
 6. EXISTING SIDEWALK TO BE RENEWED AS PER SD-228A AND AS DIRECTED BY CONTRACT ADMINISTRATOR.
 7. RENEW EXISTING CURB AS DIRECTED BY CONTRACT ADMINISTRATOR.
 8. ALL PRIVATE WALKWAYS TO BE ADJUSTED TO NEW SIDEWALK OR TOP OF CURB ELEVATION, AS DIRECTED BY THE CONTRACT ADMINISTRATOR.
 9. EXISTING LIP CURB AT PRIVATE APPROACHES TO BE RENEWED AS DIRECTED BY CONTRACT ADMINISTRATOR.
 10. PAVEMENT REPAIR FABRIC TO BE INSTALLED AS SHOWN OR AS DIRECTED BY CONTRACT ADMINISTRATOR.
 11. MODIFIED BARRIER CURB TO BE CONSTRUCTED AT ALL RADI AS DIRECTED BY CONTRACT ADMINISTRATOR.
 12. CONTRACTORS TO TAKE PRECAUTIONARY STEPS TO PROTECT EXISTING TREES WITHIN THE LIMITS OF CONSTRUCTION FROM DAMAGE FROM CONSTRUCTION ACTIVITIES AS OUTLINED IN THE SPECIFICATIONS.
 13. LAMP STANDARDS, HYDRO POLES, AND ANCHORS THAT REQUIRE TEMPORARY SUPPORT, REMOVAL OR REPLACEMENT, TO BE DONE SO AT THE EXPENSE OF THE CONTRACTOR AS NECESSARY.
 14. ALL BOULEVARDS TO BE SODDED UNLESS OTHERWISE NOTED.
 15. ADJUST ALL WATER VALVES, HYDRANTS, MANHOLES, AND CATCH BASINS IN WORK AREA TO GRADE.

EXISTING	LEGEND-PLAN	PROPOSED	EXISTING	LEGEND-PLAN	PROPOSED	EXISTING	LEGEND-PLAN	PROPOSED
---	WATER MAIN	---	---	NORTH/WEST GARAGE APPROACH	---	---	---	---
---	LAND DRAINAGE SEWER	---	---	SOUTH/EAST GARAGE APPROACH	---	---	---	---
---	WASTE WATER SEWER	---	---	VALVE	---	---	---	---
---	HYDRO	---	---	CURB STOP	---	---	---	---
---	GAS	---	---	HYDRO POLE & LIGHT STANDARD	---	---	---	---
---	COMMUNICATIONS	---	---	LIGHT STANDARD OR TRAFFIC SIGNAL	---	---	---	---
---	SIGNALS	---	---	HYDRO POLE / ANCHOR	---	---	---	---
---	MANHOLE	---	---	FENCE	---	---	---	---
---	CATCH BASIN/CATCH PIT	---	---	PROPERTY LINE	---	---	---	---
---	CURB INLET	---	---	TEST HOLE / PAVEMENT CORE	---	---	---	---
---	UTILITIES ADJUSTED	---	---	ELEVATIONS	---	---	---	---
---	HYDRANT	---	---	CURB RAMP	---	---	---	---
---	---	---	---	DETECTABLE WARNING SURFACE TILE	---	---	---	---

LOCATIONS APPROVED UNDERGROUND STRUCTURES

SIGNED BY: _____ DATE: _____
SUP/UG STRUCTURES

LOCATION OF UNDERGROUND STRUCTURES AS SHOWN ARE BASED ON THE BEST INFORMATION AVAILABLE BUT NO GUARANTEE IS GIVEN THAT ALL EXISTING UTILITIES ARE SHOWN OR THAT THE GIVEN LOCATIONS ARE EXACT CONFIRMATION OF EXISTENCE AND EXACT LOCATION OF ALL SERVICES MUST BE OBTAINED FROM THE INDIVIDUAL UTILITIES BEFORE PROCEEDING

G.B.M. TOH AT SOUTHWEST CORNER OF KILLARNEY AVE. AND BAYLOR AVE.
ELEV. INTERSECTION 233.278

SIGNED BY: _____ DATE: _____
SUP/UG STRUCTURES

LOCATION OF UNDERGROUND STRUCTURES AS SHOWN ARE BASED ON THE BEST INFORMATION AVAILABLE BUT NO GUARANTEE IS GIVEN THAT ALL EXISTING UTILITIES ARE SHOWN OR THAT THE GIVEN LOCATIONS ARE EXACT CONFIRMATION OF EXISTENCE AND EXACT LOCATION OF ALL SERVICES MUST BE OBTAINED FROM THE INDIVIDUAL UTILITIES BEFORE PROCEEDING



WSP Canada Inc.
1600 Buffalo Place
Winnipeg, MB R3T 6B8
t. 204.477.6650
f. 204.474.2864
www.wsp.com

DESIGNED BY: A.B./E.M.

DRAWN BY: A.B./E.M.

HOR. SCALE 1:250

VERTICAL 1:10

NO. REVISIONS

WSP Canada Inc.
1600 Buffalo Place
Winnipeg, MB R3T 6B8
t. 204.477.6650
f. 204.474.2864
www.wsp.com

DESIGNED BY: A.B./E.M.

DRAWN BY: A.B./E.M.

HOR. SCALE 1:250

VERTICAL 1:10

NO. REVISIONS

ENGINEER'S SEAL

CONSULTANT ACAD DWG. NO.
CA0043424.6934-62

NOTE: CHAINAGES SHOWN ARE ALONG
C OF RIGHT-OF-WAY

FOR TENDER PURPOSES ONLY
NOT FOR CONSTRUCTION

METRIC

WHOLE NUMBERS INDICATE MILLIMETRES
DECIMALIZED NUMBERS INDICATE METRES

**ENGINEERS
GEOSCIENTISTS
MANITOBA**
Certificate of Authorization
WSP Canada Inc.
No. 5750



THE CITY OF WINNIPEG
PUBLIC WORKS DEPARTMENT
ENGINEERING SERVICES DIVISION

2025 LOCAL STREET ALLEY RENEWALS

KILLARNEY AVE./BAYLOR AVE./GREYFIARS RD.
ALLEY

ALLEY MAJOR REHABILITATION
STA. 3+40 TO STA. 4+47.64

CITY DRAWING NUMBER

SHEET 15 OF 15

TENDER NO. 227-2025