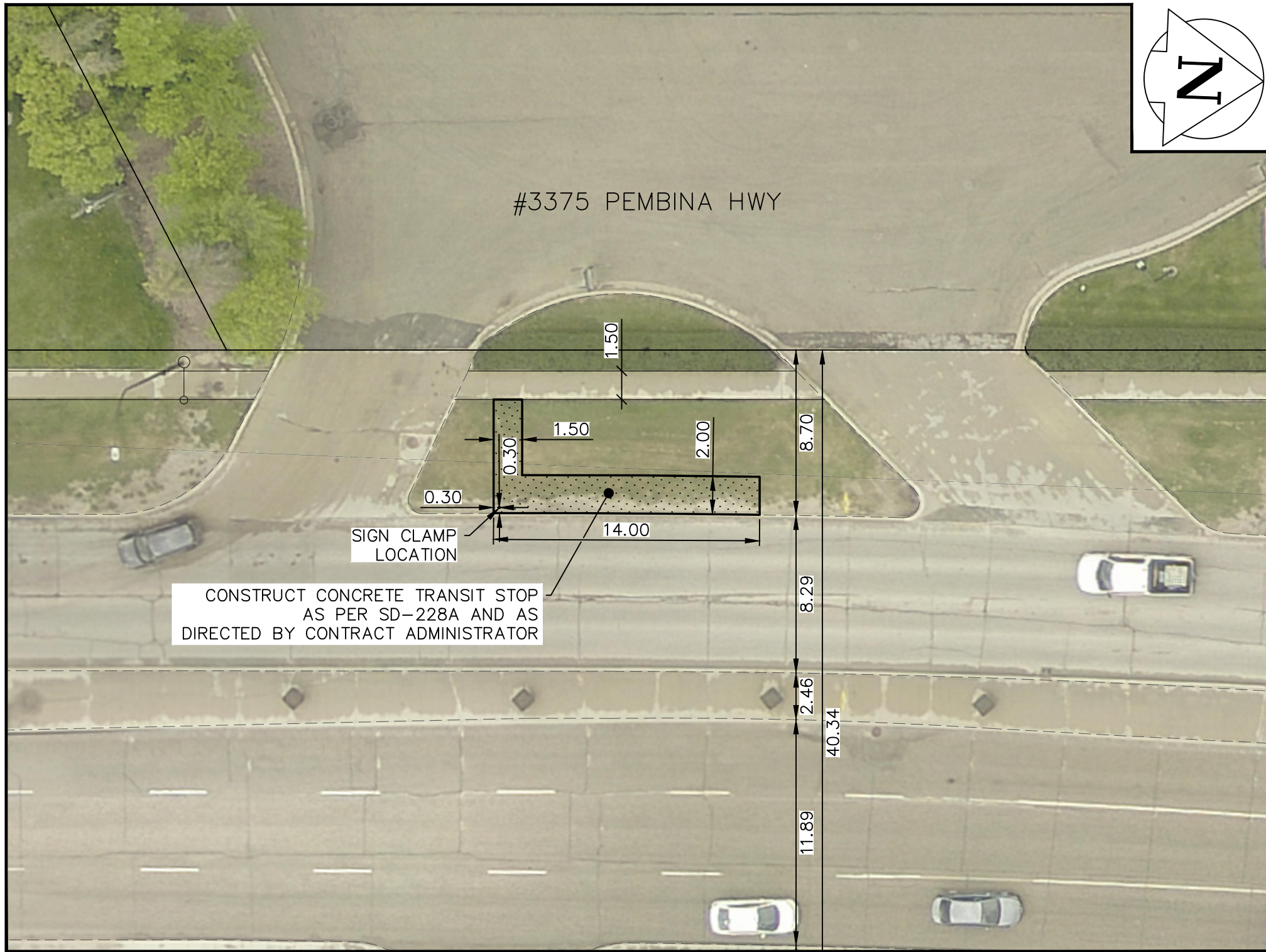
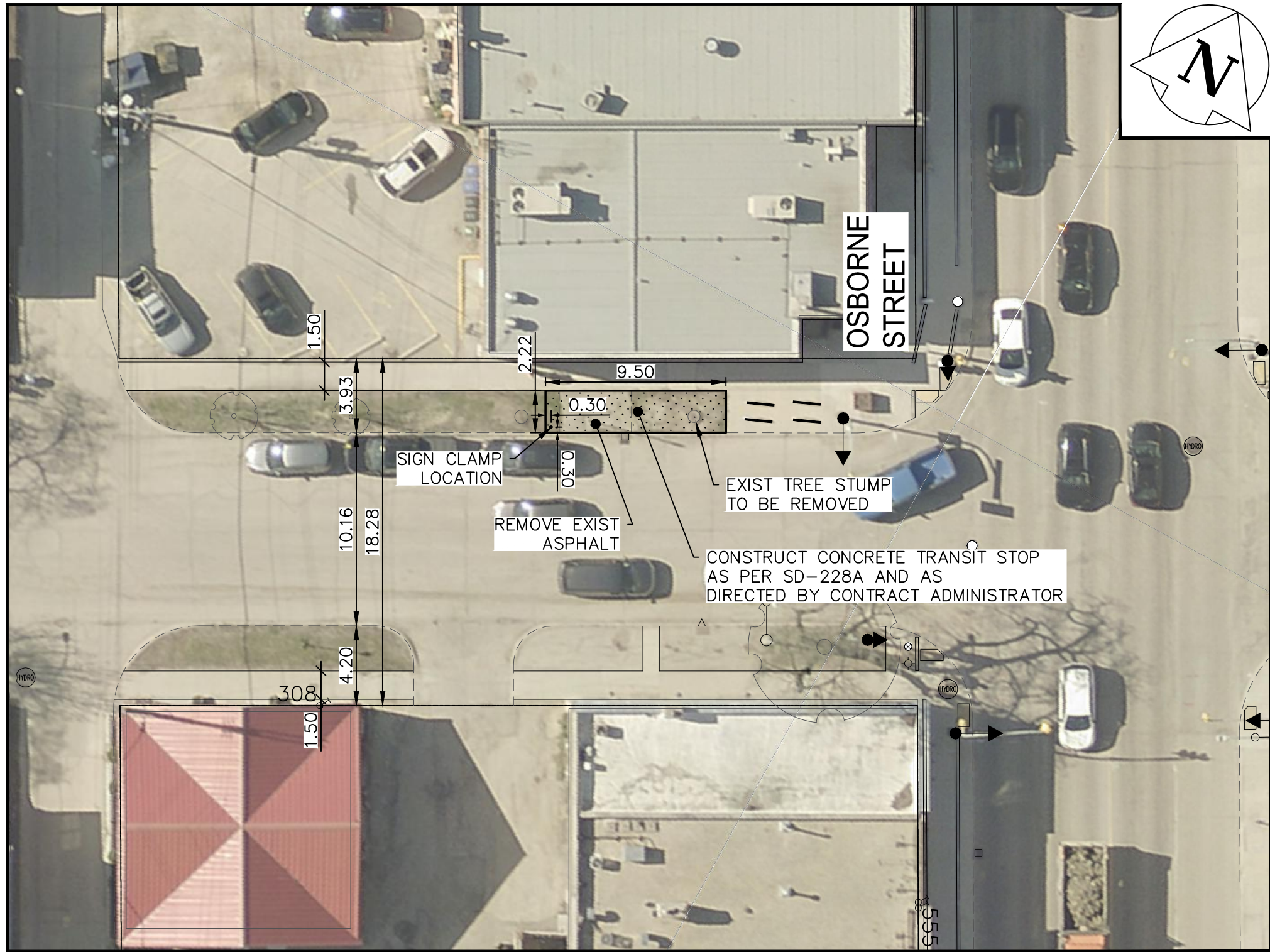


Mar 27, 2025 — 5:37pm
P:\2024\CA0043424.6934 - CA-25-R-04 Local Streets\02 Drawings\03_Work_Dwg\CA0043424.6934_CA_25-R-04_Transit_Stops_Plan&Profile.dwg - tab:230-2025_Drawing_CA0043424.6934-46-R0

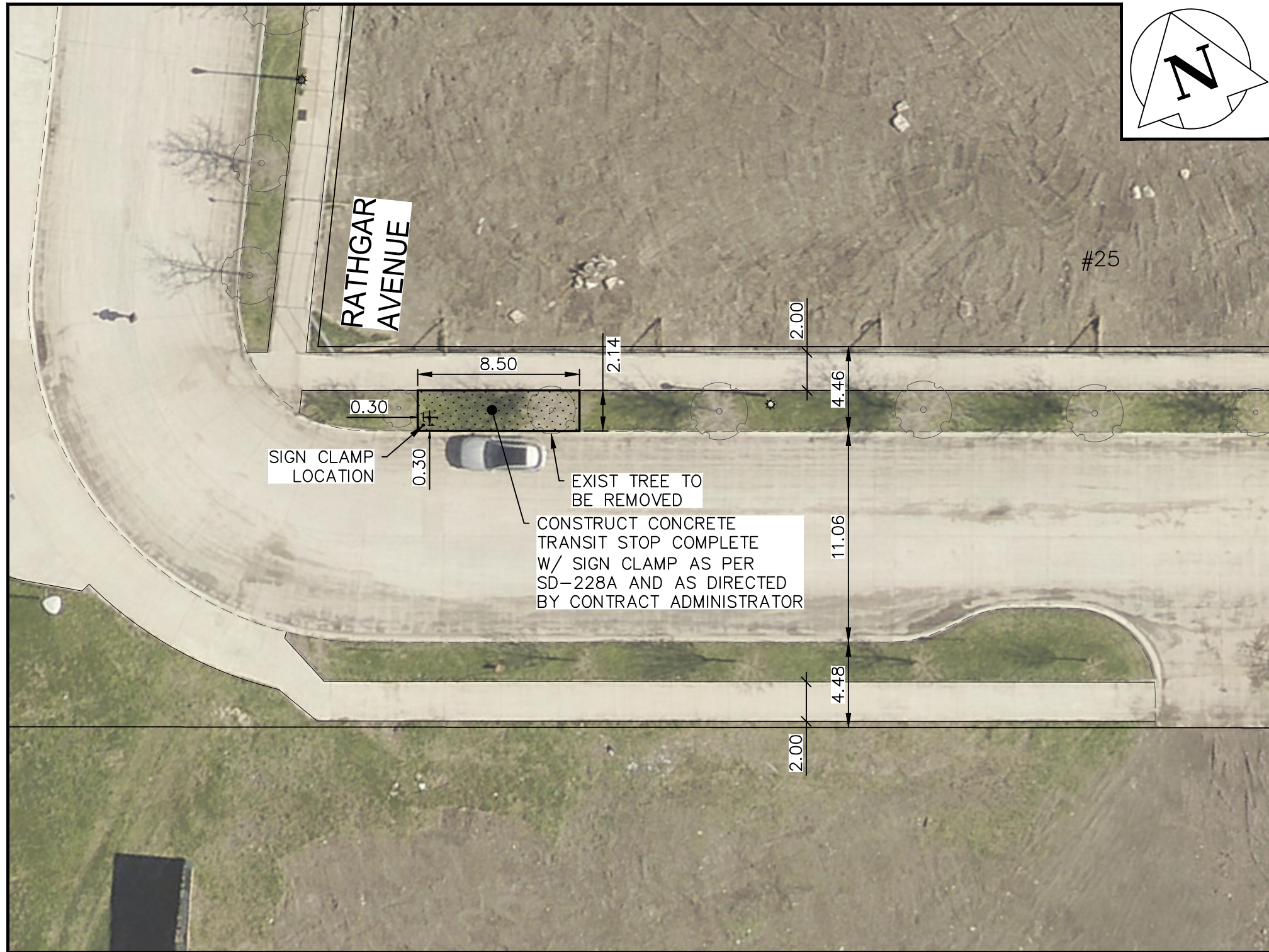
PEMBINA HIGHWAY



MORELY AVENUE



STATION PLACE



NOTES:

1. ALL WORK AND MATERIALS TO BE IN ACCORDANCE WITH THE LATEST REVISION OF THE CITY OF WINNIPEG STANDARD CONSTRUCTION SPECIFICATIONS.
2. CONTRACTOR TO CONFIRM THE LOCATION OF ALL UTILITIES/SERVICES IN THE FIELD PRIOR TO CONSTRUCTION.
3. ALL ROADWAY DIMENSIONS SHOWN ARE TO BACK OF CURB.
4. ALL TRANSIT STOPS TO BE 100mm TYPE1 CONCRETE.
5. EXISTING SIDEWALK TO BE RENEWED AS PER SD-228A AND AS DIRECTED BY CONTRACT ADMINISTRATOR.
6. CONTRACTORS TO TAKE PRECAUTIONARY STEPS TO PROTECT EXISTING TREES WITHIN THE LIMITS OF CONSTRUCTION FROM DAMAGE FROM CONSTRUCTION ACTIVITIES AS OUTLINED IN THE SPECIFICATIONS.
7. LAMP STANDARDS, HYDRO POLES, AND ANCHORS THAT REQUIRE TEMPORARY SUPPORT, REMOVAL OR REPLACEMENT, TO BE DONE SO AT THE EXPENSE OF THE CONTRACTOR AS NECESSARY.
8. ALL BOULEVARDS TO BE SODDED UNLESS OTHERWISE NOTED.
9. ADJUST ALL WATER VALVES, HYDRANTS, MANHOLES, AND CATCH BASINS IN WORK AREA TO GRADE.

---	WATER MAIN	---	⊗	---	VALVE	---	EDGE OF SIDEWALK	---
---	LAND DRAINAGE SEWER	---	⊗	---	CURB STOP	---	EDGE OF ASPHALT	---
---	WASTE WATER SEWER	---	⊗	---	HYDRO POLE & LIGHT STANDARD	---	EDGE OF CONCRETE	---
---	HYDRO	---	⊗	---	LIGHT STANDARD OR TRAFFIC SIGNAL	---	MODIFIED BARRIER CURB	---
---	GAS	---	⊗	---	HYDRO POLE / ANCHOR	---	BARRIER CURB	---
---	COMMUNICATIONS	---	⊗	---	FENCE	---	BARRIER CURB AND GUTTER	---
---	SIGNALS	---	⊗	---	PROPERTY LINE	---	PAVING STONE	---
○	MANHOLE	●	⊗	---	TEST HOLE / PAVEMENT CORE	---	CONCRETE SIDEWALK	---
□	CATCH BASIN/CATCH PIT	■	⊗	---	ELEVATIONS	(231.000)	CONCRETE SLAB	---
△	CURB INLET	▼	⊗	---	CURB RAMP	---	ASPHALT	---
◇	UTILITIES ADJUSTED	△ □ ○	⊗	---	DETECTABLE WARNING SURFACE TILE	---	MILLED SURFACE	---
◇	HYDRANT	◆	⊗	---	LEGEND-PLAN	---	PAVEMENT REPAIR FABRIC	---
EXISTING	LEGEND-PLAN	PROPOSED	EXISTING	LEGEND-PLAN	PROPOSED	EXISTING	LEGEND-PLAN	PROPOSED

LOCATIONS APPROVED
UNDERGROUND STRUCTURES

SIGNED BY: _____ DATE: _____
SUPV UG STRUCTURES

LOCATION OF UNDERGROUND STRUCTURES AS SHOWN ARE BASED ON THE BEST INFORMATION AVAILABLE BUT NO GUARANTEE IS GIVEN THAT ALL EXISTING UTILITIES ARE SHOWN OR THAT THE GIVEN LOCATIONS ARE EXACT CONFIRMATION OF EXISTENCE AND EXACT LOCATION OF ALL SERVICES MUST BE OBTAINED FROM THE INDIVIDUAL UTILITIES BEFORE PROCEEDING

G.B.M. ELEV.	DESIGNED BY	CHECKED BY	DRAWN BY	HOR. SCALE	VERTICAL	ISSUED FOR TENDER	DATE	BY	NO.	REVISIONS
7				1:250		0	2025/03/21	R.H.		
6						1				
5						2				
4						3				
3						4				
2						5				
1						6				
0						7				
NO.						8				

wsp		WSP Canada Inc. 1600 Buffalo Place Winnipeg, MB R3T 6B8 t. 204.477.6650 f. 204.474.2864 www.wsp.com	
DESIGNED BY	R.H.	CHECKED BY	R.H.
DRAWN BY	R.H.	APPROVED BY	S.M.
HOR. SCALE	1:250	RELEASED FOR CONSTRUCTION	
DATE	JANUARY 2025	DATE	

ENGINEER'S SEAL	
CONSULTANT ACAD DWG. NO.	CA0043424.6934-46

THE CITY OF WINNIPEG PUBLIC WORKS DEPARTMENT ENGINEERING SERVICES DIVISION		CITY DRAWING NUMBER
2025 LOCAL STREET RENEWALS VARIOUS LOCATIONS PEMBINA HWY, MORLEY AVE, STATION PL TRANSIT STOP IMPROVEMENTS		SHEET 46 OF 47 TENDER NO. 230-2025

METRIC

WHOLE NUMBERS INDICATE MILLIMETRES
DECIMALIZED NUMBERS INDICATE METRES

**ENGINEERS
GEOSCIENTISTS
MANITOBA**
Certificate of Authorization
WSP Canada Inc.
No. 5750

FOR TENDER PURPOSES ONLY

NOT FOR CONSTRUCTION