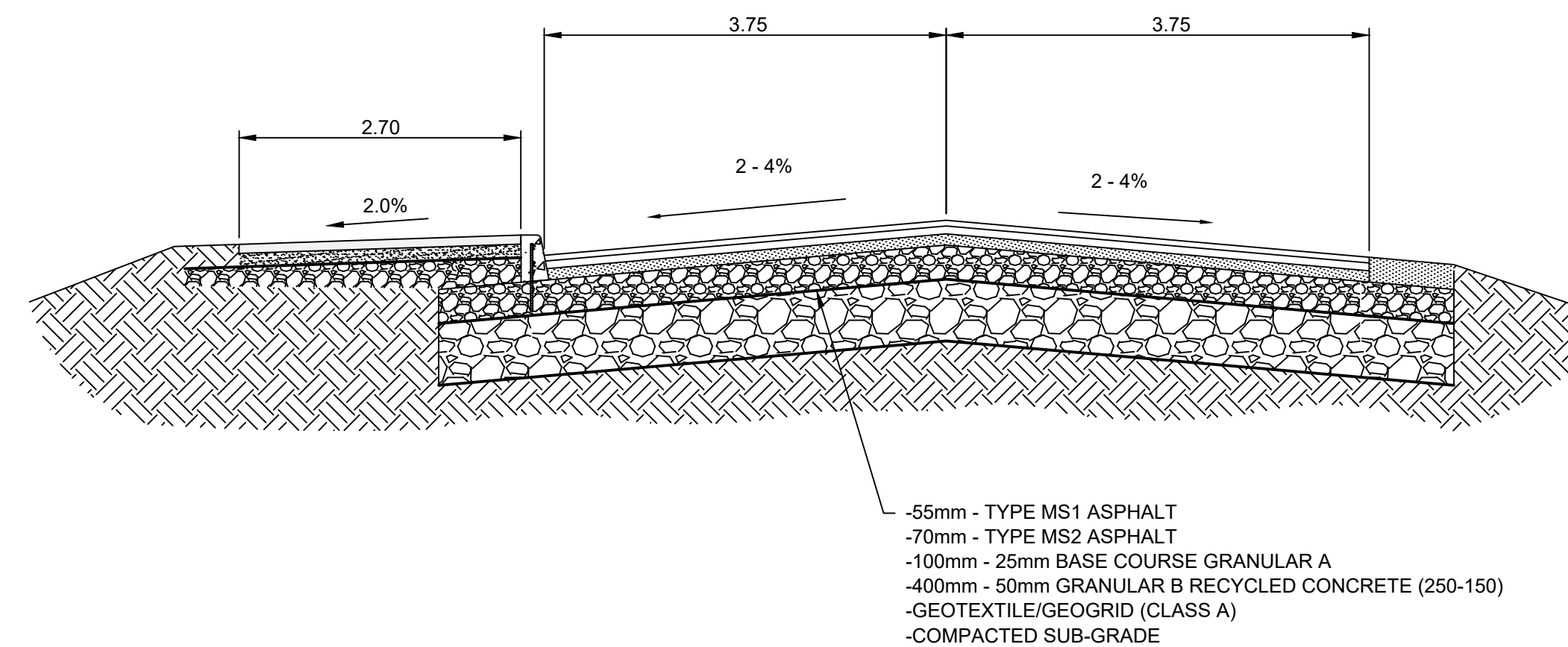
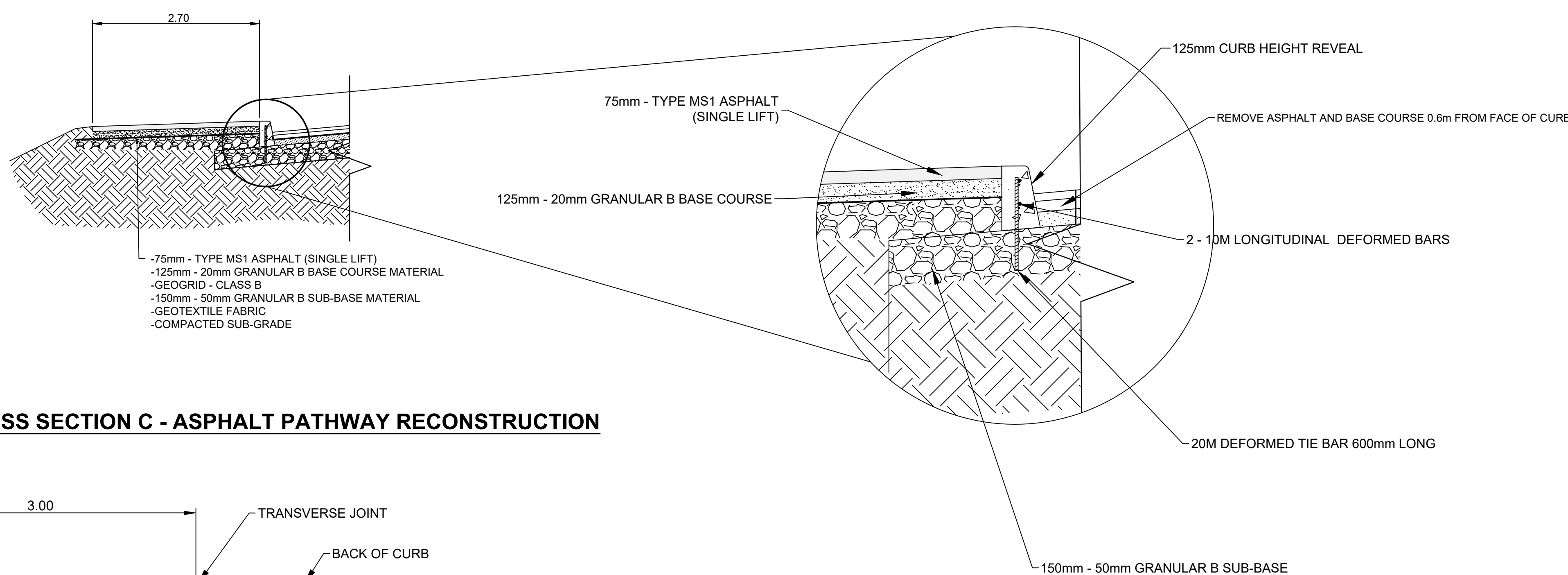


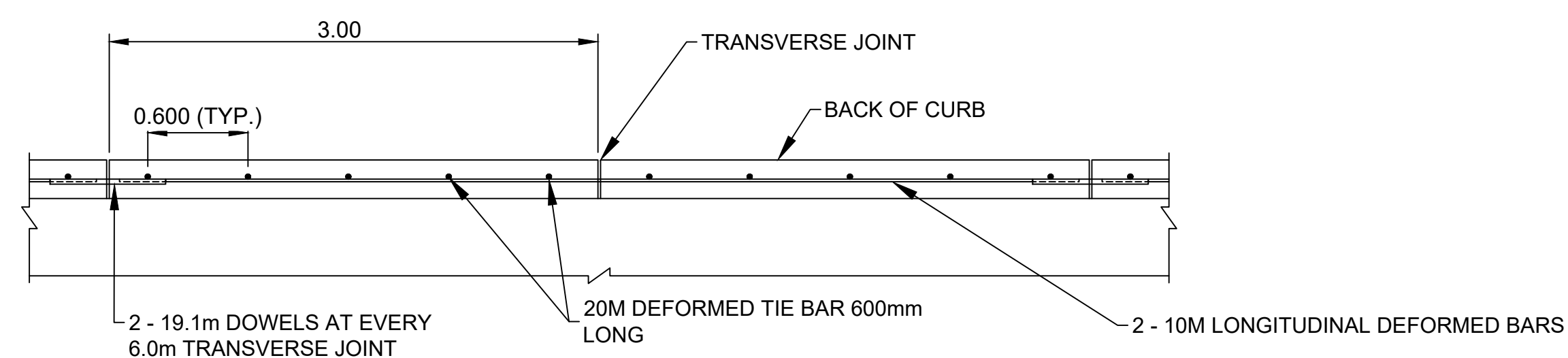
**TYPICAL CROSS SECTION A - ASPHALT WIDENING RECONSTRUCTION**  
N.T.S.



**TYPICAL CROSS SECTION B - ASPHALT RECONSTRUCTION**  
N.T.S.



**TYPICAL CROSS SECTION C - ASPHALT PATHWAY RECONSTRUCTION**  
N.T.S.



**SD-200A PLAN VIEW**  
N.T.S.

- NOTES:**
- REFER TO SPECIFICATION E16. CONSTRUCTION OF BARRIER CURB FOR ASPHALT PAVEMENT OF THE TENDER DOCUMENT
  - TRANSVERSE JOINT SAW CUT EVERY 3.0m TO A MAXIMUM DEPTH OF 25mm

- GENERAL NOTES**
- PAVEMENT DIMENSIONS ARE TO BACK OF CURB
  - ALL CURB RADII UNDER 15.0m SHALL BE MODIFIED
  - CURB REPLACEMENT AS DIRECTED BY CONTRACT ADMINISTRATOR
  - ALL WATER SERVICES WITHIN THE LIMITS OF THE RECONSTRUCTION SHALL BE INSULATED AS PER SD-018
  - CONTRACTOR TO CONFIRM LOCATION OF ALL UTILITIES/SERVICES PRIOR TO CONSTRUCTION
  - ADJUST ALL CURB STOPS AND WATER VALVES TO GRADE

**ISSUED FOR TENDER**  
NOT TO BE USED FOR  
CONSTRUCTION

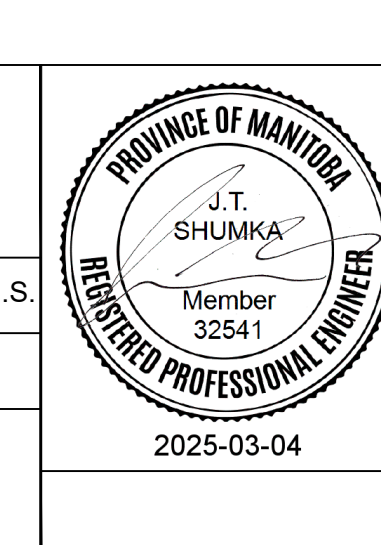
**METRIC**  
WHOLE NUMBERS INDICATE MILLIMETERS  
DECIMALIZED NUMBERS INDICATE METERS

TENDER NO. 27-2025

EXISTING	LEGEND - PLAN	PROPOSED	EXISTING	LEGEND - PLAN	PROPOSED	EXISTING	LEGEND - PROFILE	PROPOSED
⊕	HYDRANT	◆	— — — —	BOULEVARD	— — — —	— — — —	CONCRETE	— — — —
⊕	VALVE	◆	— — — —	EDGE OF GRAVEL/SHOULDER	— — — —	— — — —	CONCRETE SIDEWALK	— — — —
⊕	CURB STOP	◆	— — — —	LDS/WWS	— — — —	— — — —	ASPHALT RECONSTRUCTION	— — — —
⊕	MANHOLE	●	— — — —	WATERMAIN	— — — —	— — — —	ASPHALT REHABILITATION	— — — —
⊕	CATCH BASIN	■	— — — —	GAS	— — — —	— — — —	REPAIR FABRIC	— — — —
⊕	CATCH PIT/CURB INLET	■	— — — —	TRAFFIC SIGNALS	— — — —	— — — —	RIP RAP	— — — —
⊕	HYDRO POLE	▲	— — — —	HYDRO/STREET LIGHT	— — — —	— — — —	TOP OF DITCH	— — — —
⊕	LIGHT STANDARD	●	— — — —	MTS/SHAW	— — — —	— — — —	CENTER LINE	— — — —
⊕	TRAFFIC SIGNAL POLE	●	— — — —	CURB RENEWAL	— — — —	— — — —	WEST EDGE OF ASPHALT	— — — —
⊕	SURVEY BAR	◆	— — — —	PROPERTY LINE	— — — —	— — — —	EAST EDGE OF ASPHALT	— — — —
⊕	TREE	◆	— — — —	RAMP CURB	— — — —	— — — —	WEST CL DITCH	— — — —
⊕	ELEVATIONS	31.000	— — — —	CL DITCH	— — — —	— — — —	EAST CL DITCH	— — — —

NO.	REVISIONS	DATE	BY
2.	ISSUED FOR TENDER	05/03/2025	DPEN
1.	SUBMIT FOR PLAN APPROVAL	04/02/2025	DPEN
NO.	REVISIONS	DATE	BY

DESIGNED BY	D.PEN	CHECKED BY	T.G. E.H. R.W. J.S.
DRAWN BY	D.PEN	APPROVED BY	J.T.S.
HOR. SCALE:	1 : 250	DATE	2025/02/28
VERTICAL:	1 : 10		



**THE CITY OF WINNIPEG**  
PUBLIC WORKS DEPARTMENT

**DE VRIES AVENUE**  
FROM MCIVOR AVENUE TO HEADMASTER ROW  
ASPHALT REHABILITATION AND ASSOCIATED WORKS

CITY DRAWING NUMBER SE-25-312  
SHEET 13 OF 23  
7