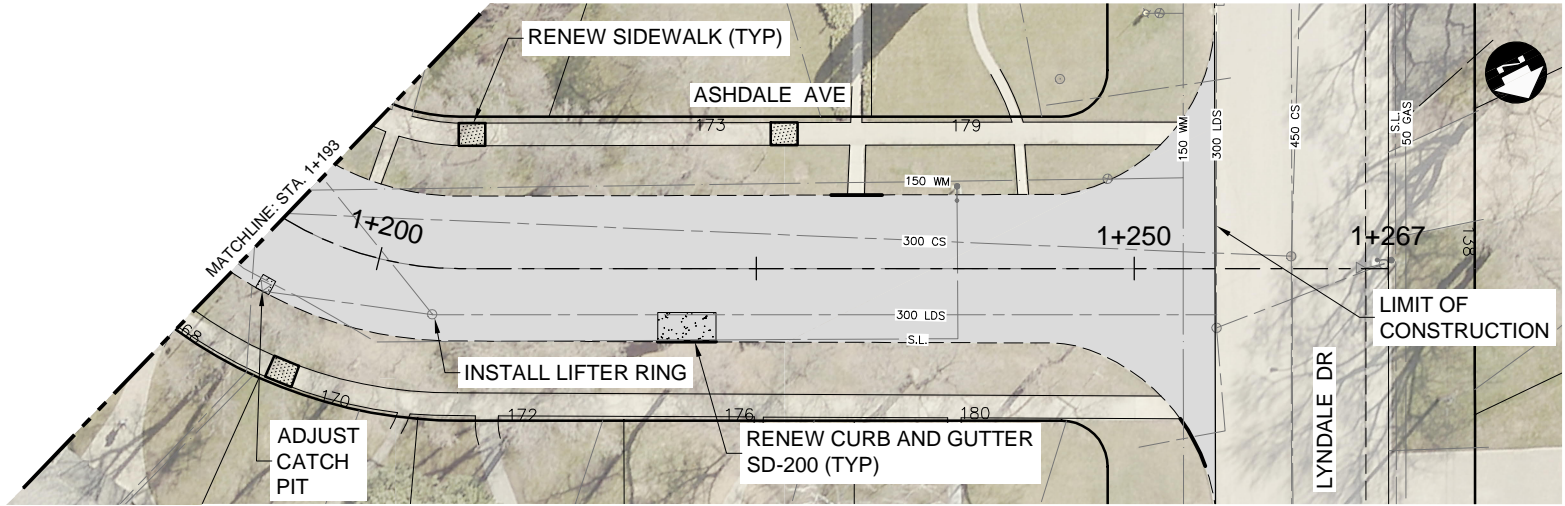
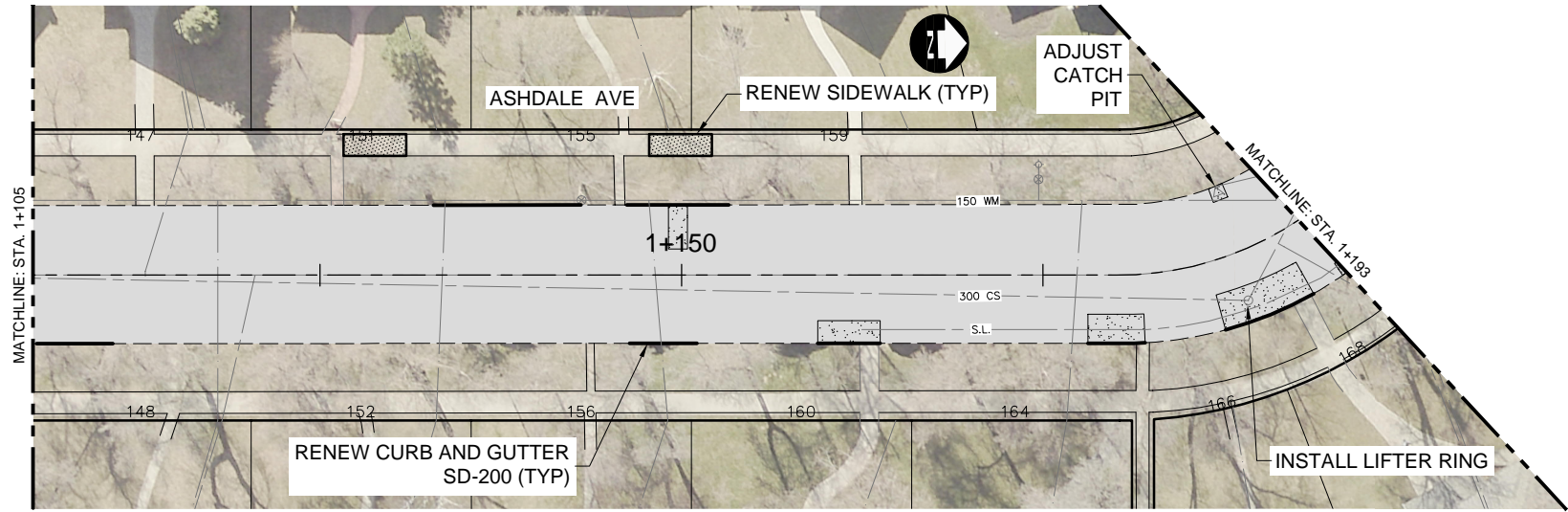
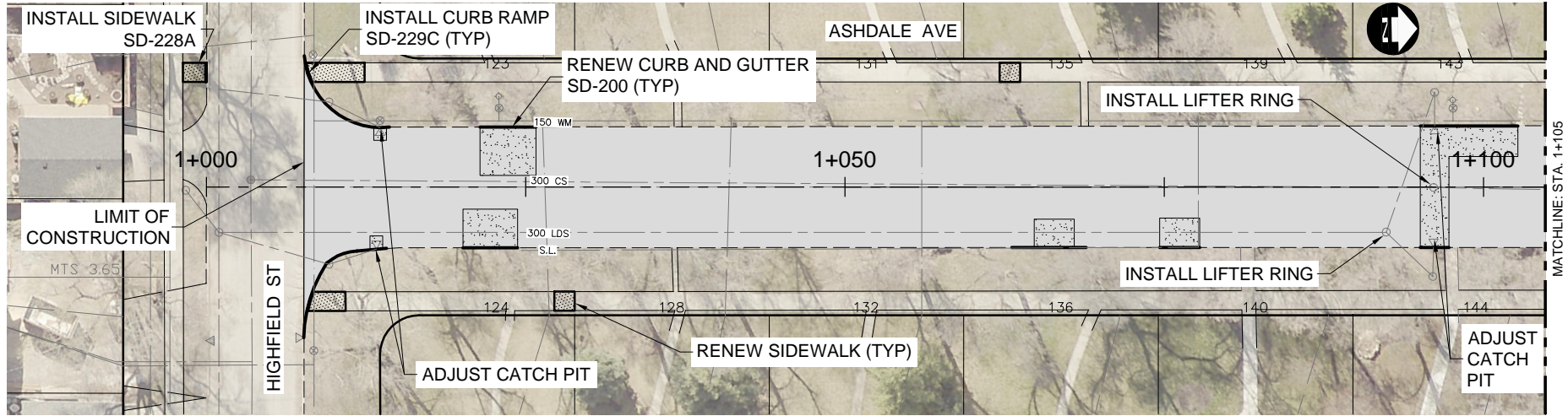


APPENDIX 'B'

RESURFACING DRAWINGS



- NOTES:**
1. ALL WORK AND MATERIALS TO BE IN ACCORDANCE WITH LATEST REVISION OF THE CITY OF WINNIPEG STANDARD CONSTRUCTION SPECIFICATIONS.
 2. LEGAL PLAN AND UNDERGROUND INFORMATION FROM CITY OF WINNIPEG LBIS. ALL UNDERGROUNDS TO BE VERIFIED BY THE CONTRACTOR IN THE FIELD.
 3. CONTRACTOR TO TAKE PRECAUTIONARY STEPS TO AVOID DAMAGE FROM CONSTRUCTION ACTIVITIES TO TREES WITHIN THE LIMITS OF CONSTRUCTION.
 4. LOCATION OF EXISTING SERVICES TO BE CONFIRMED IN THE FIELD BY THE CONTRACTOR.
 5. LIMITS OF BOULEVARD GRADING TO BE FINALIZED IN THE FIELD BY THE CONTRACT ADMINISTRATOR.
 6. ADJUST ALL WATER VALVES, MANHOLES, CATCH BASINS AND CATCH PITS TO GRADE.
 7. PAVEMENT REPAIRS SHOWN ARE ONLY REPRESENTATIVE OF APPROXIMATION OF CONSTRUCTION.
 8. CONTRACTOR TO INSTALL CONCRETE RISERS BY REMOVING THE EXISTING FLAT TOP REDUCER, PLACING RISERS AS DIRECTED BY THE CONTRACT ADMINISTRATOR AND THEN REINSTALLING THE EXISTING FLAT TOP REDUCER.
 9. EXCAVATIONS WITHIN 1.0m FROM THE OUTER EDGE OF WM TO THE NEAREST EDGE OF EXCAVATION ARE TO BE CONDUCTED WITHOUT HEAVY VIBRATORY EQUIPMENT. BOTH SAW CUTTING AND REMOVAL OR SOFT DIGGING ARE ACCEPTABLE MEANS OF EXCAVATION AT THESE LOCATIONS.

LEGEND

-  ASPHALT OVERLAY
-  FULL DEPTH CONCRETE REPAIRS
-  GRANULAR REPAIRS
-  CROSS STITCH REPAIRS
-  CURB REPAIRS

METRIC

WHOLE NUMBERS INDICATE MILLIMETRES
DECIMALIZED NUMBERS INDICATE METRES




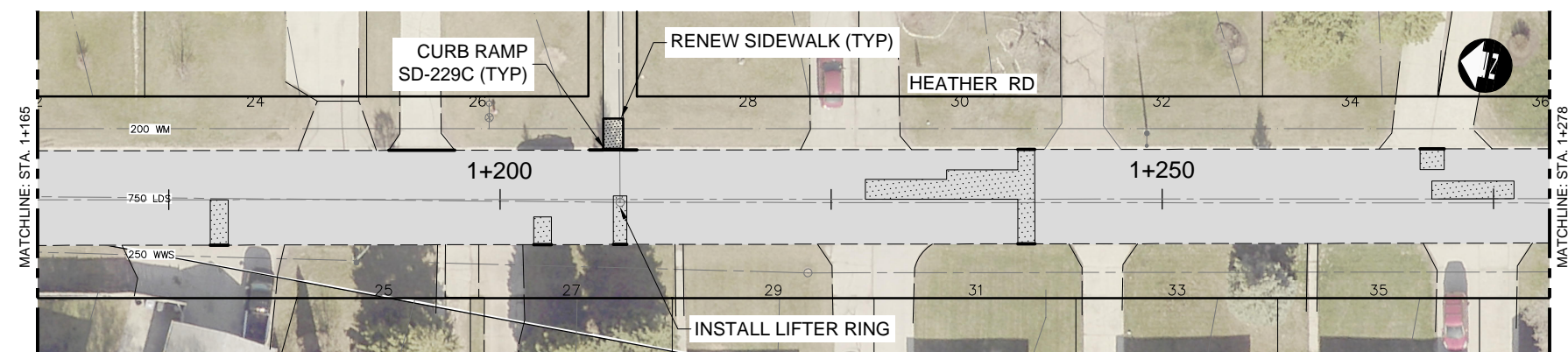
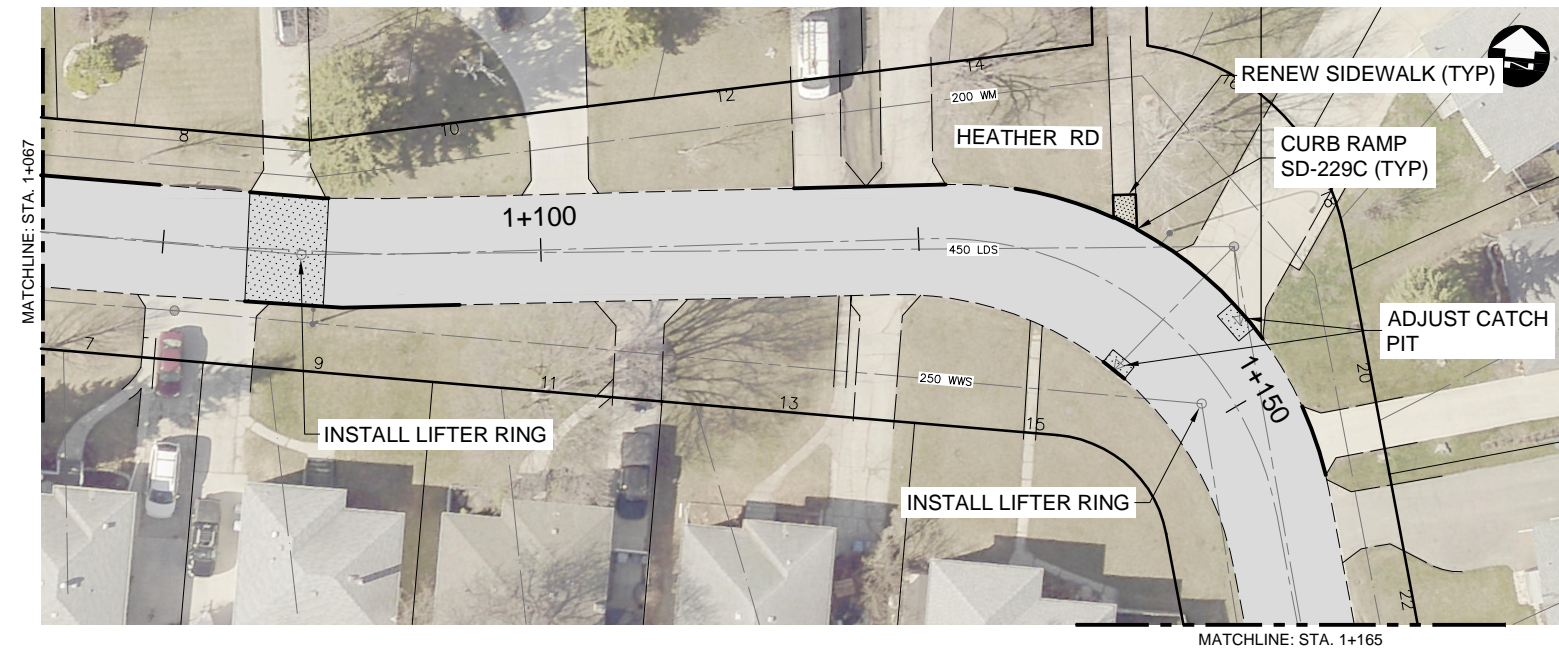
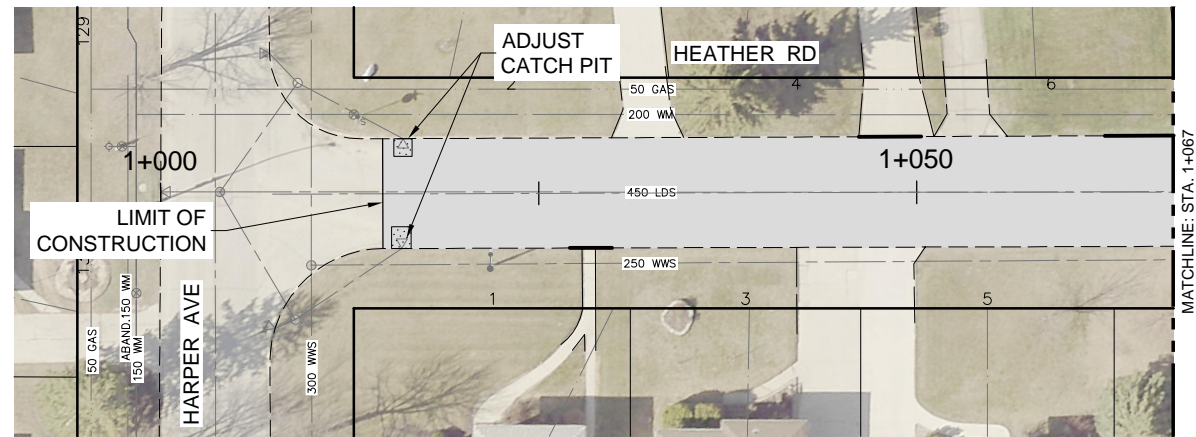
B.M. ELEV.			
0	ISSUED FOR TENDER	25/03/25	LAS
NO.	REVISIONS	DATE	BY

DESIGNED BY	DRC
DRAWN BY	DRC
CHECKED BY	LAS
APPROVED BY	TJP
HOR. SCALE	1:500
VERTICAL	—
DATE	

	RELEASED FOR CONSTRUCTION
	DATE

ENGINEER'S SEAL
CONSULTANT PROJECT NUMBER
24-9227

 THE CITY OF WINNIPEG PUBLIC WORKS DEPARTMENT	
2025 RESIDENTIAL STREETS RENEWAL PROGRAM CROMWELL STREET AND VARIOUS OTHER LOCATIONS	CITY DRAWING NUMBER
	SHEET A1 OF A6
ASHDALE AVENUE	TENDER NO.



NOTES:

1. ALL WORK AND MATERIALS TO BE IN ACCORDANCE WITH LATEST REVISION OF THE CITY OF WINNIPEG STANDARD CONSTRUCTION SPECIFICATIONS.
2. LEGAL PLAN AND UNDERGROUND INFORMATION FROM CITY OF WINNIPEG LBIS. ALL UNDERGROUNDS TO BE VERIFIED BY THE CONTRACTOR IN THE FIELD.
3. CONTRACTOR TO TAKE PRECAUTIONARY STEPS TO AVOID DAMAGE FROM CONSTRUCTION ACTIVITIES TO TREES WITHIN THE LIMITS OF CONSTRUCTION.
4. LOCATION OF EXISTING SERVICES TO BE CONFIRMED IN THE FIELD BY THE CONTRACTOR.
5. LIMITS OF BOULEVARD GRADING TO BE FINALIZED IN THE FIELD BY THE CONTRACT ADMINISTRATOR.
6. ADJUST ALL WATER VALVES, MANHOLES, CATCH BASINS AND CATCH PITS TO GRADE.
7. PAVEMENT REPAIRS SHOWN ARE ONLY REPRESENTATIVE OF APPROXIMATION OF CONSTRUCTION.
8. CONTRACTOR TO INSTALL CONCRETE RISERS BY REMOVING THE EXISTING FLAT TOP REDUCER, PLACING RISERS AS DIRECTED BY THE CONTRACT ADMINISTRATOR AND THEN REINSTALLING THE EXISTING FLAT TOP REDUCER.
9. EXCAVATIONS WITHIN 1.0m FROM THE OUTER EDGE OF WM TO THE NEAREST EDGE OF EXCAVATION ARE TO BE CONDUCTED WITHOUT HEAVY VIBRATORY EQUIPMENT. BOTH SAW CUTTING AND REMOVAL OR SOFT DIGGING ARE ACCEPTABLE MEANS OF EXCAVATION AT THESE LOCATIONS.

LEGEND



ASPHALT OVERLAY



FULL DEPTH CONCRETE REPAIRS



GRANULAR REPAIRS



CROSS STITCH REPAIRS



CURB REPAIRS

METRIC

WHOLE NUMBERS INDICATE MILLIMETRES
DECIMALIZED NUMBERS INDICATE METRES



B.M. ELEV.			
0	ISSUED FOR TENDER	25/03/25	LAS
NO.	REVISIONS	DATE	BY

DESIGNED BY	DRC
DRAWN BY	DRC
CHECKED BY	LAS
APPROVED BY	TJP
HOR. SCALE	1:500
VERTICAL	—
DATE	



ENGINEER'S SEAL

CONSULTANT PROJECT NUMBER
24-9227



THE CITY OF WINNIPEG
PUBLIC WORKS DEPARTMENT

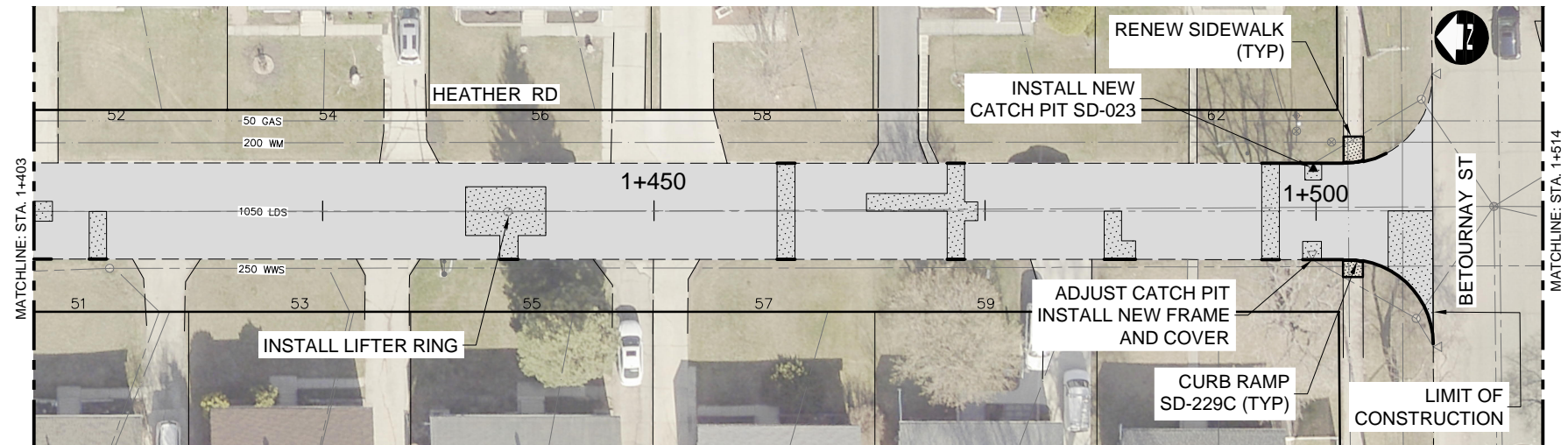
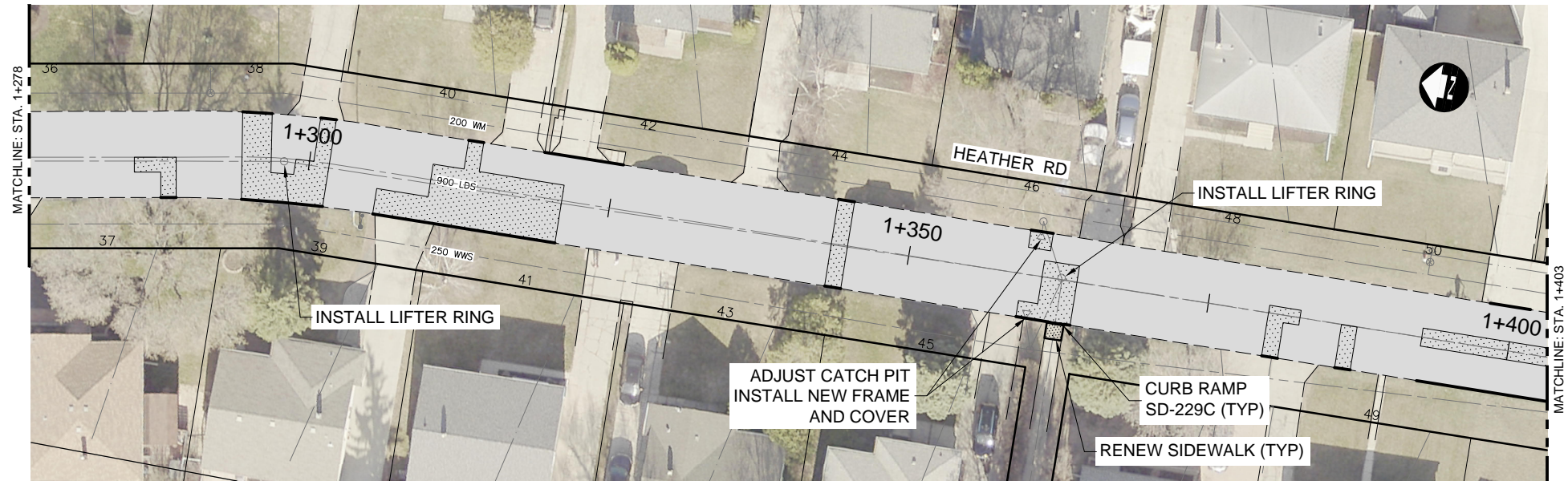
2025 RESIDENTIAL STREETS RENEWAL PROGRAM
CROMWELL STREET AND VARIOUS OTHER LOCATIONS

HEATHER ROAD (1 OF 3)

CITY DRAWING NUMBER

SHEET 43 OF 46

TENDER NO.



- NOTES:
1. ALL WORK AND MATERIALS TO BE IN ACCORDANCE WITH LATEST REVISION OF THE CITY OF WINNIPEG STANDARD CONSTRUCTION SPECIFICATIONS.
 2. LEGAL PLAN AND UNDERGROUND INFORMATION FROM CITY OF WINNIPEG LBIS. ALL UNDERGROUNDS TO BE VERIFIED BY THE CONTRACTOR IN THE FIELD.
 3. CONTRACTOR TO TAKE PRECAUTIONARY STEPS TO AVOID DAMAGE FROM CONSTRUCTION ACTIVITIES TO TREES WITHIN THE LIMITS OF CONSTRUCTION.
 4. LOCATION OF EXISTING SERVICES TO BE CONFIRMED IN THE FIELD BY THE CONTRACTOR.
 5. LIMITS OF BOULEVARD GRADING TO BE FINALIZED IN THE FIELD BY THE CONTRACT ADMINISTRATOR.
 6. ADJUST ALL WATER VALVES, MANHOLES, CATCH BASINS AND CATCH PITS TO GRADE.
 7. PAVEMENT REPAIRS SHOWN ARE ONLY REPRESENTATIVE OF APPROXIMATION OF CONSTRUCTION.
 8. CONTRACTOR TO INSTALL CONCRETE RISERS BY REMOVING THE EXISTING FLAT TOP REDUCER, PLACING RISERS AS DIRECTED BY THE CONTRACT ADMINISTRATOR AND THEN REINSTALLING THE EXISTING FLAT TOP REDUCER.
 9. EXCAVATIONS WITHIN 1.0m FROM THE OUTER EDGE OF WM TO THE NEAREST EDGE OF EXCAVATION ARE TO BE CONDUCTED WITHOUT HEAVY VIBRATORY EQUIPMENT. BOTH SAW CUTTING AND REMOVAL OR SOFT DIGGING ARE ACCEPTABLE MEANS OF EXCAVATION AT THESE LOCATIONS.

LEGEND

ASPHALT OVERLAY

FULL DEPTH CONCRETE REPAIRS

GRANULAR REPAIRS

—X—X—

CROSS STITCH REPAIRS

—

CURB REPAIRS

METRIC

WHOLE NUMBERS INDICATE MILLIMETRES
DECIMALIZED NUMBERS INDICATE METRES

ES

ENGINEERS
GEOSCIENTISTS
MANITOBA

Certificate of Authorization
Dillon Consulting Limited (MB)
No. 1789 Date: 2025/03/25

B.M.
ELEV.

DESIGNED BY
DRC

DRAWN BY
DRC

CHECKED BY
LAS

APPROVED BY
TJP

HOR. SCALE
1:500

VERTICAL
—

DILLON
CONSULTING

RELEASED FOR CONSTRUCTION

DATE

ENGINEER'S SEAL

CONSULTANT PROJECT NUMBER
24-9227

THE CITY OF WINNIPEG

PUBLIC WORKS DEPARTMENT

2025 RESIDENTIAL STREETS RENEWAL PROGRAM
CROMWELL STREET AND VARIOUS OTHER LOCATIONS

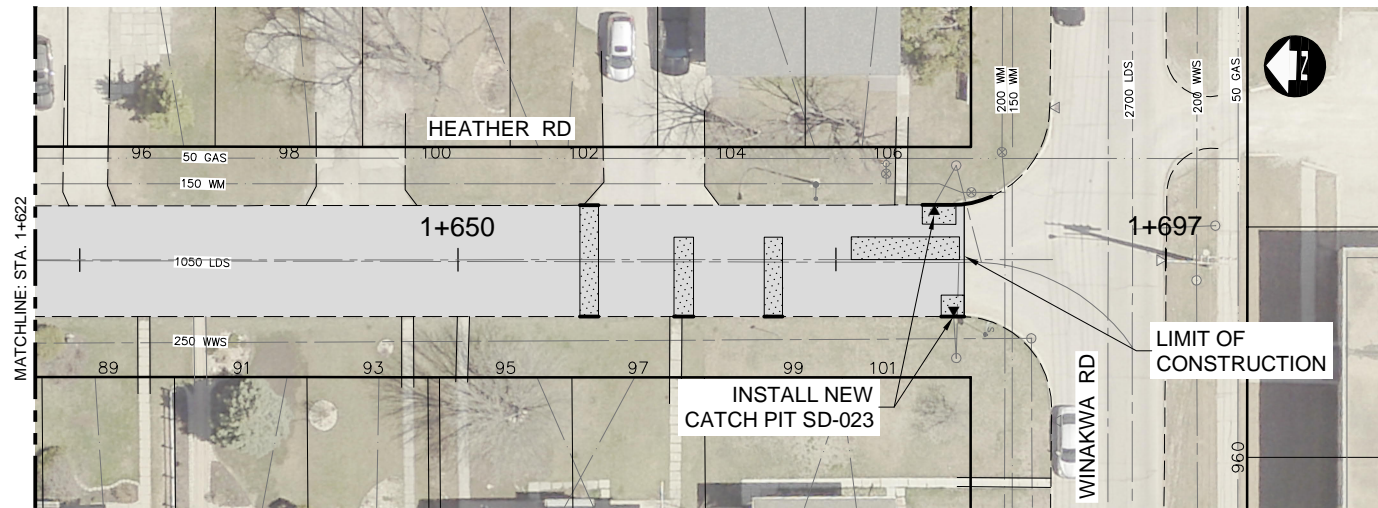
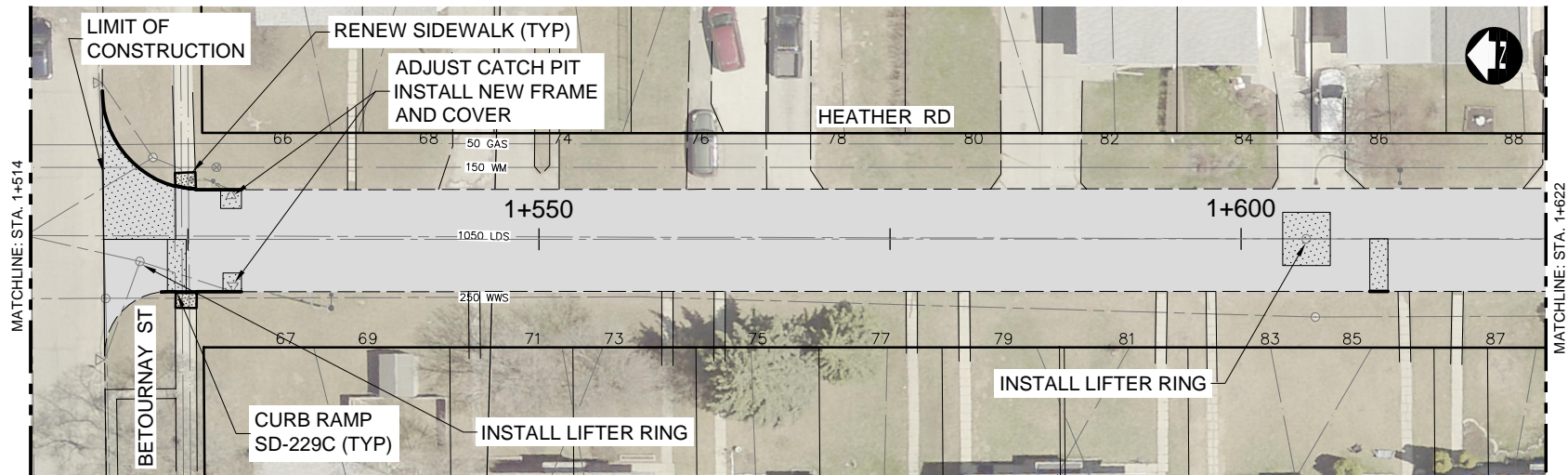
CITY DRAWING NUMBER

SHEET A4 OF A6

TENDER NO.

HEATHER ROAD (2 OF 3)

c:\pw working directory\projects 2024\dillon_40tjh\dms87744\249227-CT-CON-HEATHER.dwg



- NOTES:
- ALL WORK AND MATERIALS TO BE IN ACCORDANCE WITH LATEST REVISION OF THE CITY OF WINNIPEG STANDARD CONSTRUCTION SPECIFICATIONS.
 - LEGAL PLAN AND UNDERGROUND INFORMATION FROM CITY OF WINNIPEG LBIS. ALL UNDERGROUNDS TO BE VERIFIED BY THE CONTRACTOR IN THE FIELD.
 - CONTRACTOR TO TAKE PRECAUTIONARY STEPS TO AVOID DAMAGE FROM CONSTRUCTION ACTIVITIES TO TREES WITHIN THE LIMITS OF CONSTRUCTION.
 - LOCATION OF EXISTING SERVICES TO BE CONFIRMED IN THE FIELD BY THE CONTRACTOR.
 - LIMITS OF BOULEVARD GRADING TO BE FINALIZED IN THE FIELD BY THE CONTRACT ADMINISTRATOR.
 - ADJUST ALL WATER VALVES, MANHOLES, CATCH BASINS AND CATCH PITS TO GRADE.
 - PAVEMENT REPAIRS SHOWN ARE ONLY REPRESENTATIVE OF APPROXIMATION OF CONSTRUCTION.
 - CONTRACTOR TO INSTALL CONCRETE RISERS BY REMOVING THE EXISTING FLAT TOP REDUCER, PLACING RISERS AS DIRECTED BY THE CONTRACT ADMINISTRATOR AND THEN REINSTALLING THE EXISTING FLAT TOP REDUCER.
 - EXCAVATIONS WITHIN 1.0m FROM THE OUTER EDGE OF WM TO THE NEAREST EDGE OF EXCAVATION ARE TO BE CONDUCTED WITHOUT HEAVY VIBRATORY EQUIPMENT. BOTH SAW CUTTING AND REMOVAL OR SOFT DIGGING ARE ACCEPTABLE MEANS OF EXCAVATION AT THESE LOCATIONS.

LEGEND

- ASPHALT OVERLAY
- FULL DEPTH CONCRETE REPAIRS
- GRANULAR REPAIRS
- X—X—

 CROSS STITCH REPAIRS
- CURB REPAIRS

METRIC

WHOLE NUMBERS INDICATE MILLIMETRES
DECIMALIZED NUMBERS INDICATE METRES

**ENGINEERS
GEOSCIENTISTS
MANITOBA**
Certificate of Authorization
Dillon Consulting Limited (MB)
No. 1789 Date: 2025/03/25


B.M. ELEV.			
0	ISSUED FOR TENDER	25/03/25	LAS
NO.	REVISIONS	DATE	BY

DESIGNED BY	DRC
DRAWN BY	DRC
CHECKED BY	LAS
APPROVED BY	TJP
HOR. SCALE	1:500
VERTICAL	—
DATE	

**DILLON
CONSULTING**

RELEASED FOR CONSTRUCTION

ENGINEER'S SEAL	CITY DRAWING NUMBER
	SHEET A5 OF A6
CONSULTANT PROJECT NUMBER	TENDER NO.

**THE CITY OF WINNIPEG**
PUBLIC WORKS DEPARTMENT

2025 RESIDENTIAL STREETS RENEWAL PROGRAM
CROMWELL STREET AND VARIOUS OTHER LOCATIONS

HEATHER ROAD (3 OF 3)

