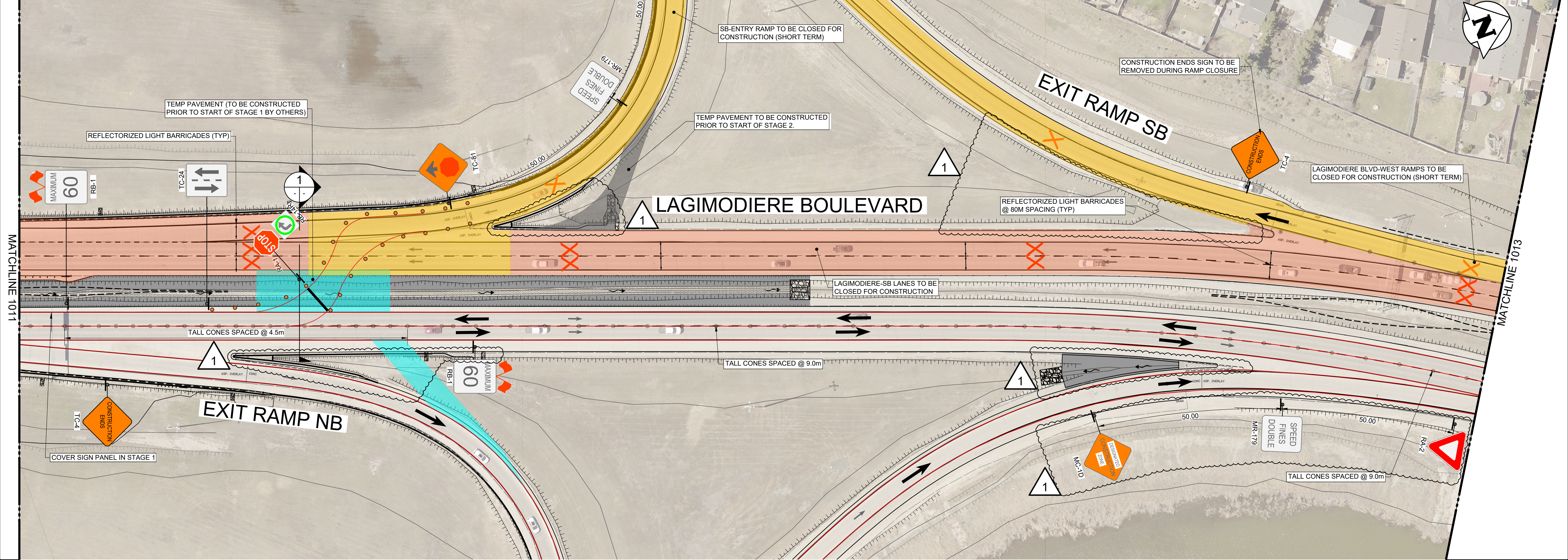
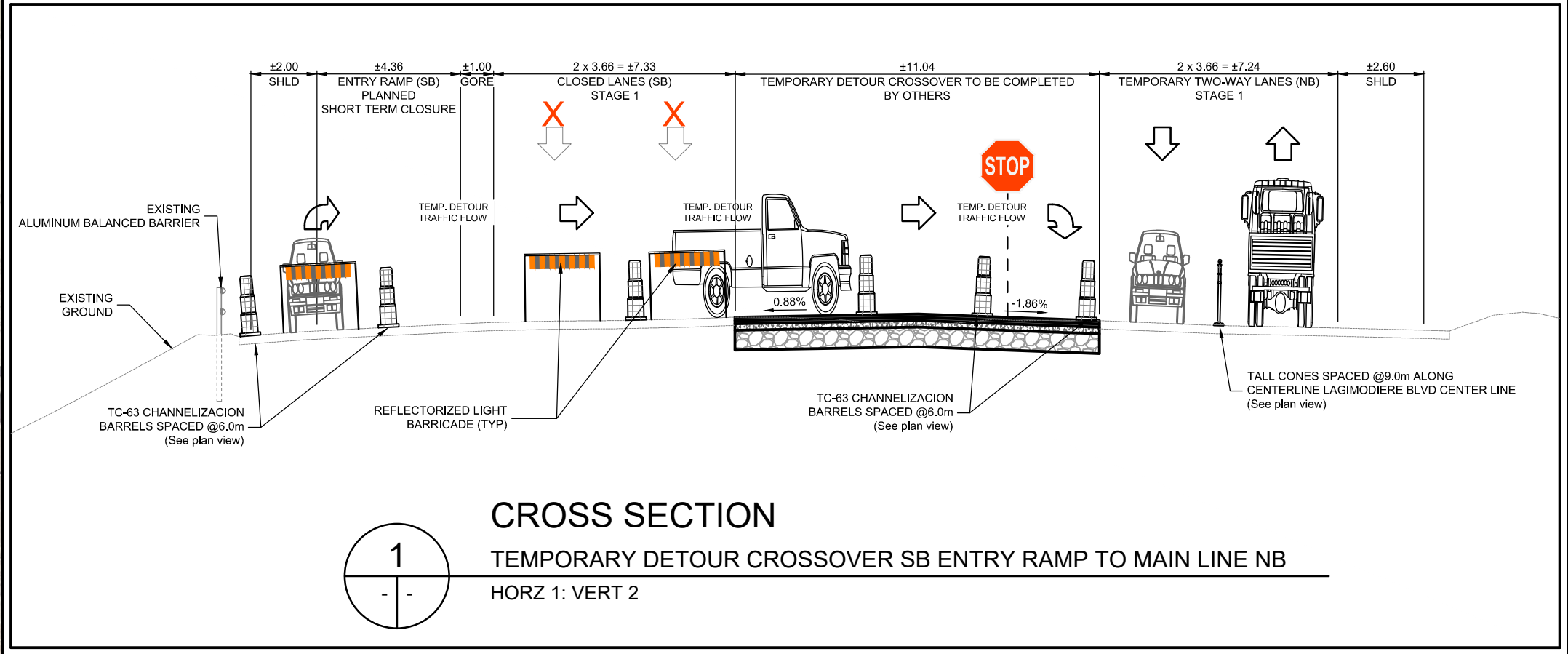


- STAGE 1 NOTES**
- SCHEDULE**
1. YEAR 1 - NOVEMBER 2025 TO NOVEMBER 2026
- MAJOR CONSTRUCTION ACTIVITIES (RELATED TO LAGIMODIERE TRAFFIC STAGING)**
1. BRIDGE REHABILITATION - (SB)
2. ROADWORKS - LAGIMODIERE BLVD.(SB) REHABILITATION, WEST SIDE RAMPS REHABILITATION, AND WEST SIDE EMBANKMENT WIDENING WORKS
3. ACTIVE TRANSPORTATION WORKS - CONSTRUCTION OF LAGIMODIERE-RAVELSTON PATHWAY
- TRAFFIC AND PEDESTRIAN CONTROL**
1. LANE AT A TIME CONSTRUCTION FOR LAGIMODIERE BLVD. (NB).
• ALMEY AVE. TO SOUTH CROSS OVER
• NORTH CROSS OVER TO GRASSIE BLVD.
2. LANE AT A TIME CONSTRUCTION FOR LAGIMODIERE BLVD. (SB).
• NORTH OF GRASSIE BLVD. OF NORTHERLY CROSS OVER.
3. CONTRACTOR TO SUBMIT AND IMPLEMENT SITE-SPECIFIC TRAFFIC MANAGEMENT PLANS TO CONTRACT ADMINISTRATOR FOR APPROVAL FOR THE FOLLOWING REHABILITATION AREAS (ALL PLANS SHALL BE SUBMITTED THREE WEEKS IN ADVANCE OF INTENDED CLOSURE):
• LANE AT A TIME ALONG LAGIMODIERE
• GRASSIE/LAGIMODIERE INTERSECTION
• CONCORDIA/LAGIMODIERE INTERCHANGE RAMPS
4. LEFT TURN MOVEMENT FROM LAGIMODIERE BLVD. (SB) TO GRASSIE BLVD. (EB) TO BE MAINTAINED DURING CONSTRUCTION
5. LEFT TURN MOVEMENT FROM LAGIMODIERE BLVD. (NB) TO GRASSIE BLVD. (WB) TO BE MAINTAINED DURING CONSTRUCTION.
6. ALL EXISTING PEDESTRIAN ROUTES TO BE MAINTAINED DURING CONSTRUCTION, INCLUDING CONCORDIA AVE NORTH SIDEWALK DURING BRIDGE REHABILITATION WORKS.
7. REGULATORY SIGNS TO BE COVERED AS DIRECTED BY THE CONTRACT ADMINISTRATOR.
8. REQUIRED LANE CLOSURES TO CONFORM TO CITY OF WINNIPEG MANUAL OF TEMPORARY TRAFFIC CONTROL.
9. REQUIRED WORKS ON RIGHT TURN CUT-OFFS TO ACCOMMODATE REQUIRED TRAFFIC MOVEMENTS.
- RAMP CLOSURE ROUTE DETOURS**
1. THE CITY OF WINNIPEG WILL SUPPLY AND INSTALL ALL TRAFFIC CONTROL RELATED TO TRUCK AND GENERAL TRAFFIC ROUTE DETOURS.
2. CONTRACTOR SHALL NOTIFY THE CONTRACT ADMINISTRATOR AND SUBMIT A SITE-SPECIFIC TRAFFIC MANAGEMENT PLAN AT LEAST ONE MONTH IN ADVANCE OF ANY SCHEDULED RAMP CLOSURE.
3. THE NORTHBOUND RIGHT TURN LANE AT GRASSIE BOULEVARD SHALL REMAIN OPEN AT ALL TIMES DURING THE CLOSURE OF THE EASTBOUND RAMPS.



- LEGEND**
- LANE-AT-A-TIME CONSTRUCTION
SHORT TERM CONSTRUCTION
LONG TERM CONSTRUCTION
TEMP PAVEMENT TO ACCOMMODATE TRAFFIC STAGING (BY OTHERS)
ACTIVE TRANSPORTATION CONSTRUCTION
- TRAFFIC MOVEMENTS
LANE CLOSED
SEQUENTIAL ARROW TRAFFIC CONTROL DEVICE
TALL CONES
BARRELS
PEDESTRIAN/CYCLIST TRAFFIC


PLAN

Scale 1 :500



METRIC

WHOLE NUMBERS INDICATE MILLIMETRES
DECIMALIZED NUMBERS INDICATE METRES

B.M. ELEV.				<div>TETRA TECH</div>				ORIGINAL DRAWING REVISION " 0 " SEALED BY J.N. CRANG 25.08.07					
						DESIGNED BY	DL	REVIEWED BY	JT				
						DRAWN BY	DD	APPROVED BY	JNC				
						SCALE:		AS NOTED		ACCEPTED BY		DATE	
1	ISSUED FOR ADDENDUM 5			25.09.22	JNC								
0	ISSUED FOR TENDER			25.08.07	JNC					CAM WARD, P.ENG.		25.08.07	
NO.	REVISIONS			DATE	BY	DATE	25.08.07						
704-INF-MB103007.01-DWG-C1012													