
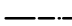



LEGEND




EXISTING UTILITY  
SERVICE POLE




EXISTING UTILITY  
O/H PRIMARY POWER LINE




NEW OUTDOOR PAD-MOUNTED  
CUSTOMER SERVICE  
TERMINATION ENCLOSURE



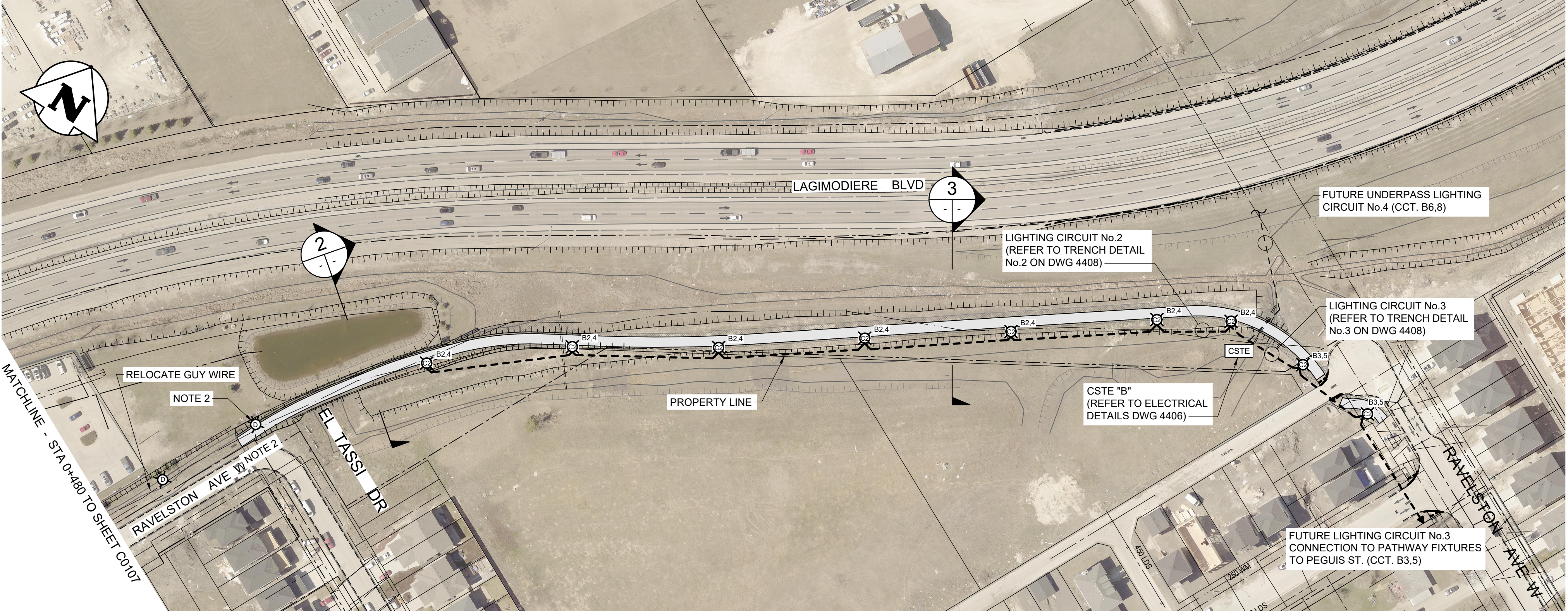
PEDESTRIAN PATHWAY  
NEW LIGHTING FIXTURE TYPE "C1"



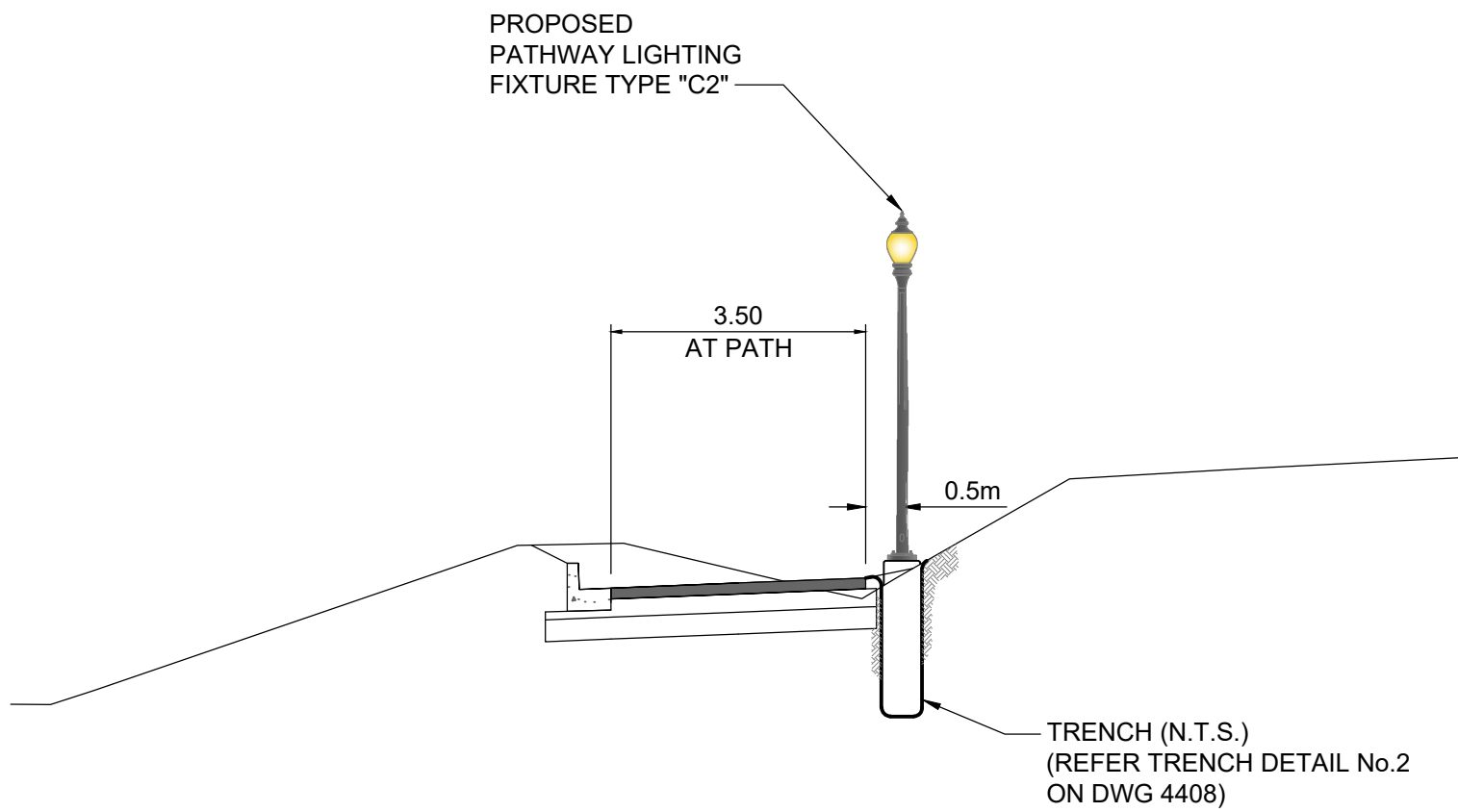
PEDESTRIAN PATHWAY  
NEW LIGHTING FIXTURE TYPE "C2"  
C/W HOUSE SHIELD



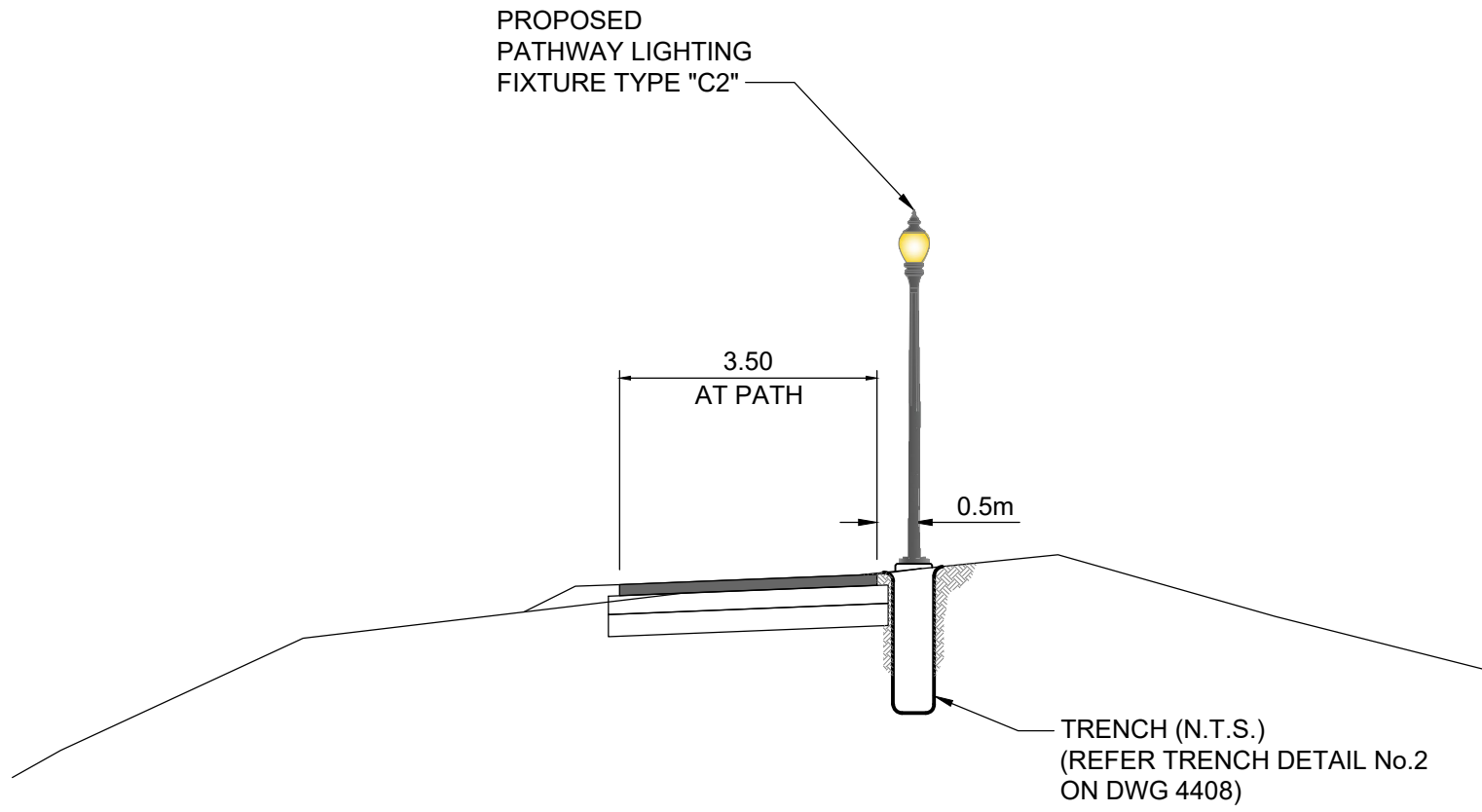
EXISTING STREET LIGHTING POLE MOUNTED  
60W FIXTURE TYPE "D" (NOTE 1)



1 ELECTRICAL SITE PLAN  
1 : 1000



2 SECTION  
H 1 : 100, V 1 : 50



3 SECTION  
H 1 : 100, V 1 : 50

- GENERAL NOTES:
- EXISTING TYPE "D" POLE MOUNTED 60W LED LUMINAIRES TO BE REPLACED WITH 90W LUMINAIRES BY OTHERS. COORDINATE ALL WORK WITH MANITOBA HYDRO.
  - EXISTING TYPE "D" POLE # 2119965 TO BE RELOCATED 1.5M IN FRONT OF PROPOSED ACTIVE TRANSPORTATION PATHWAY AS INDICATED BY OTHERS. COORDINATE ALL WORK WITH MANITOBA HYDRO.
  - THE LOCATION AND ROUTING OF ALL PROPOSED CSTE'S, LIGHTING FIXTURES, AND CONDUIT/TRENCH LINES SHOWN ON THIS DRAWING ARE FOR SCHEMATIC PURPOSES ONLY. REFER TO PAVING AND GRADING PLANS FOR INTENDED LOCATIONS.
  - CONTRACTOR TO DETERMINE FINAL ALIGNMENT OF CONDUIT/TRENCH IN THE FIELD, SUBJECT TO APPROVAL BY THE CONTRACT ADMINISTRATOR.
  - ALL UNDERGROUND CONDUIT INSTALLATIONS SHALL BE BY THE HORIZONTAL DIRECTIONAL DRILLING (HDD) METHOD WITH THE EXCEPTION OF TRENCHING SECTIONS REQUIRING THE EXPOSURE OF EXISTING UNDERGROUND UTILITIES WHEREBY THE OPEN CUT TRENCHING METHOD SHALL BE UTILIZED. CONTRACTOR SHALL CONFIRM PRECISE LOCATIONS OF ALL HDD AND OPEN CUT TRENCHING SECTIONS PRIOR TO COMMENCEMENT OF WORK AND OBTAIN FORMAL APPROVAL FROM SITE INSPECTOR AND ENGINEER FOR ALL OPEN CUT TRENCHING.
  - COORDINATE WITH MANITOBA HYDRO STREET LIGHTING DEPARTMENT FOR THE PROVISION OF A NEW 100A, 1Ø, 3W, 120/240V UNDERGROUND POWER SERVICE TO NEW CSTE "B". PRIOR TO COMMENCEMENT OF WORK CONTRACTOR TO FINALIZE ARRANGEMENTS WITH MANITOBA HYDRO INCLUDING STAKING FINAL GRADES OF THE AREA IN ADDITION TO CONFIRMING LOCATIONS OF UTILITY SERVICE POLE(S), TRANSFORMERS, ROUTING OF UNDERGROUND UTILITY POWER SERVICE CONDUCTORS, TRENCHING AND BACKFILLING, ETC. ALL WORK SHALL BE IN ACCORDANCE WITH MANITOBA HYDRO CUSTOMER METERING STANDARDS. 3. RD. EDITION. AUGUST 1, 2015.
  - MAINTAIN 1.0 METER (MIN.) SEPARATION BETWEEN MB HYDRO U/G UTILITY SERVICE CONDUCTORS AND CUSTOMER'S SUPPLIED U/G SITE LIGHTING CIRCUIT POWER FEEDER CONDUCTORS. NO SHARED TRENCHING SHALL BE PERMITTED.

**ENGINEERS  
GEOSCIENTISTS  
MANITOBA**

Certificate of Authorization  
Tetra Tech Canada Inc.  
No. 6499

| B.M.<br>ELEV. |                       |          |     |
|---------------|-----------------------|----------|-----|
|               |                       |          |     |
|               |                       |          |     |
|               |                       |          |     |
|               |                       |          |     |
|               |                       |          |     |
| 1             | ISSUED FOR ADDENDUM 5 | 25.09.22 | DWD |
| 0             | ISSUED FOR TENDER     | 25.08.07 | DWD |
| NO.           | REVISIONS             | DATE     | BY  |

|                   |          |                  |          |
|-------------------|----------|------------------|----------|
| <b>TETRA TECH</b> |          |                  |          |
| DESIGNED BY       | DWD      | CHECKED BY       | DWD      |
| DRAWN BY          | ABA      | APPROVED BY      | JNC      |
| HOR. SCALE:       | AS NOTED | ACCEPTED BY      | DATE     |
| VERTICAL:         |          | CAM WARD, P.ENG. | 25.08.07 |
| DATE              | 25.08.07 |                  |          |

|   |
|---|
| ORIGINAL DRAWING<br>REVISION "0" SEALED BY<br>D.W. DOWHAN<br>25.08.08 |
| CONSULTANT DRAWING NO.<br>734-INF-MBI03007.01-DWG-E4402               |

|   |                                     |
|---|-------------------------------------|
| <b>THE CITY OF WINNIPEG</b><br>PUBLIC WORKS DEPARTMENT<br>ENGINEERING DIVISION                    |                                     |
| LAGIMODIERE TWIN OVERPASSES<br>OVER CPKC KEEWATIN<br>REHABILITATION AND RELATED WORKS             | CITY DRAWING NUMBER<br>P123-25-4402 |
| ACTIVE TRANSPORTATION - LAGIMODIERE BLVD.<br>PATHWAY LIGHTING<br>EL TASSI DR. TO RAVELSTON AVE. W | SHEET OF<br>2 8                     |
|   | 4402                                |