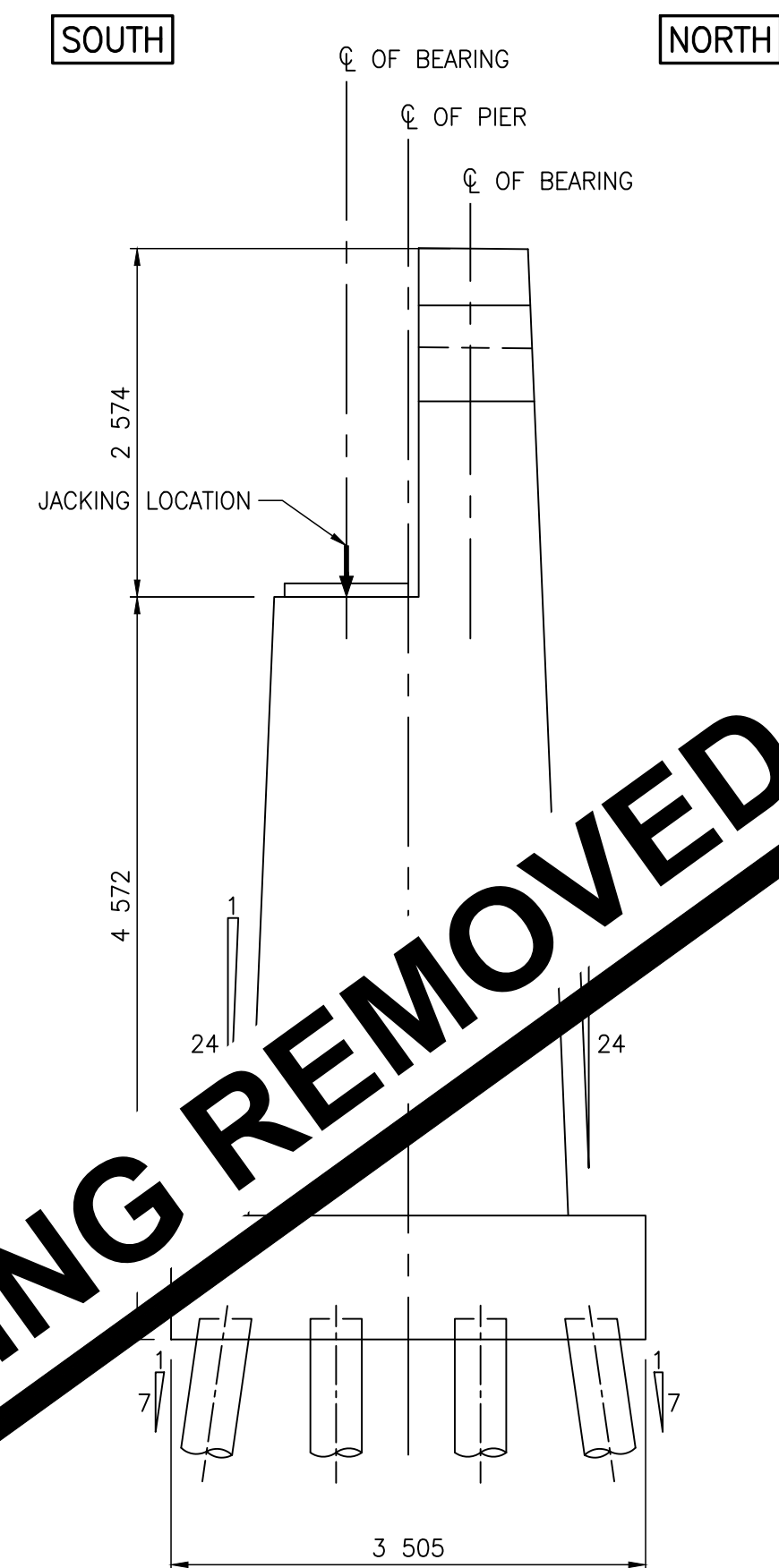
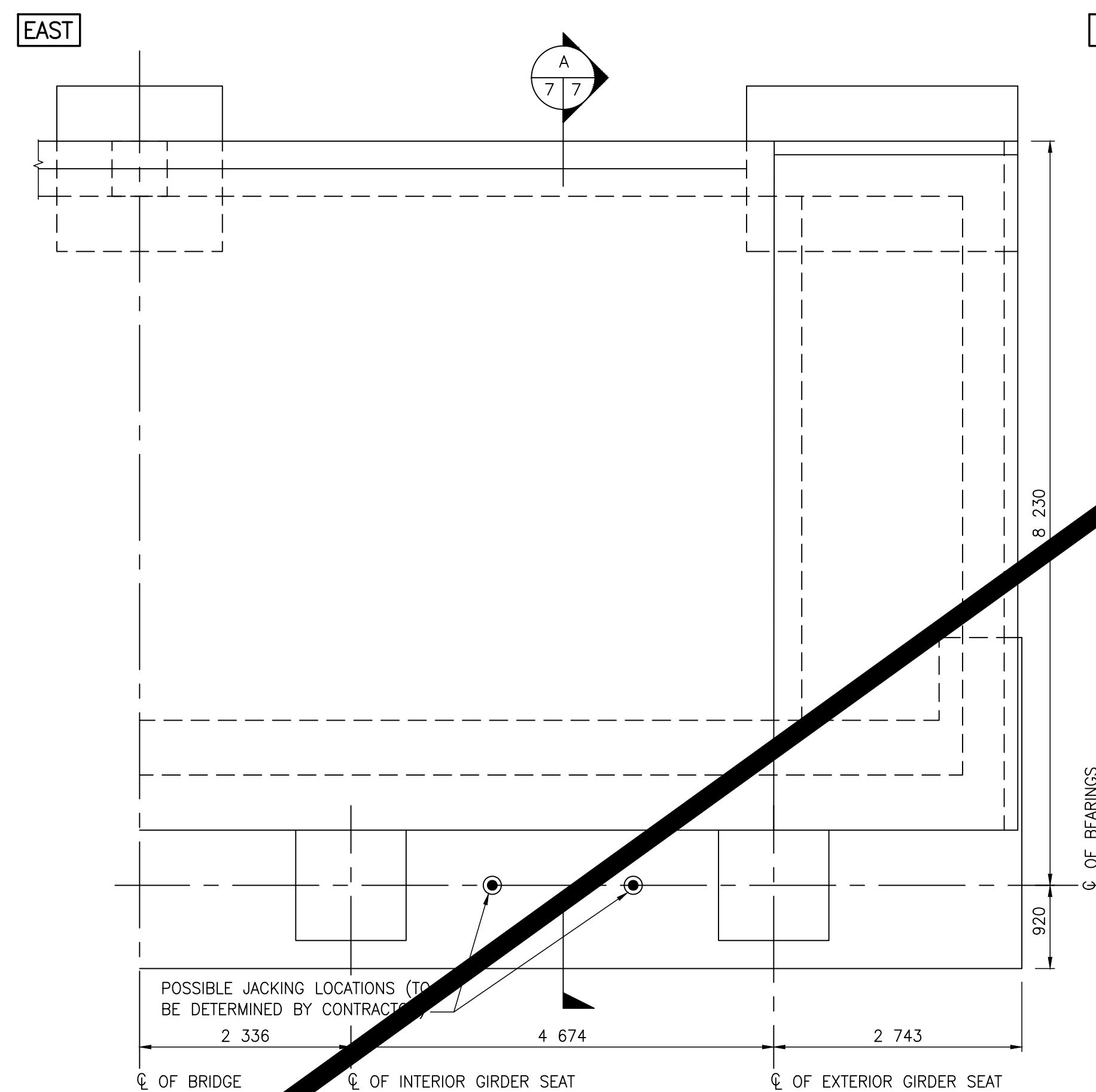


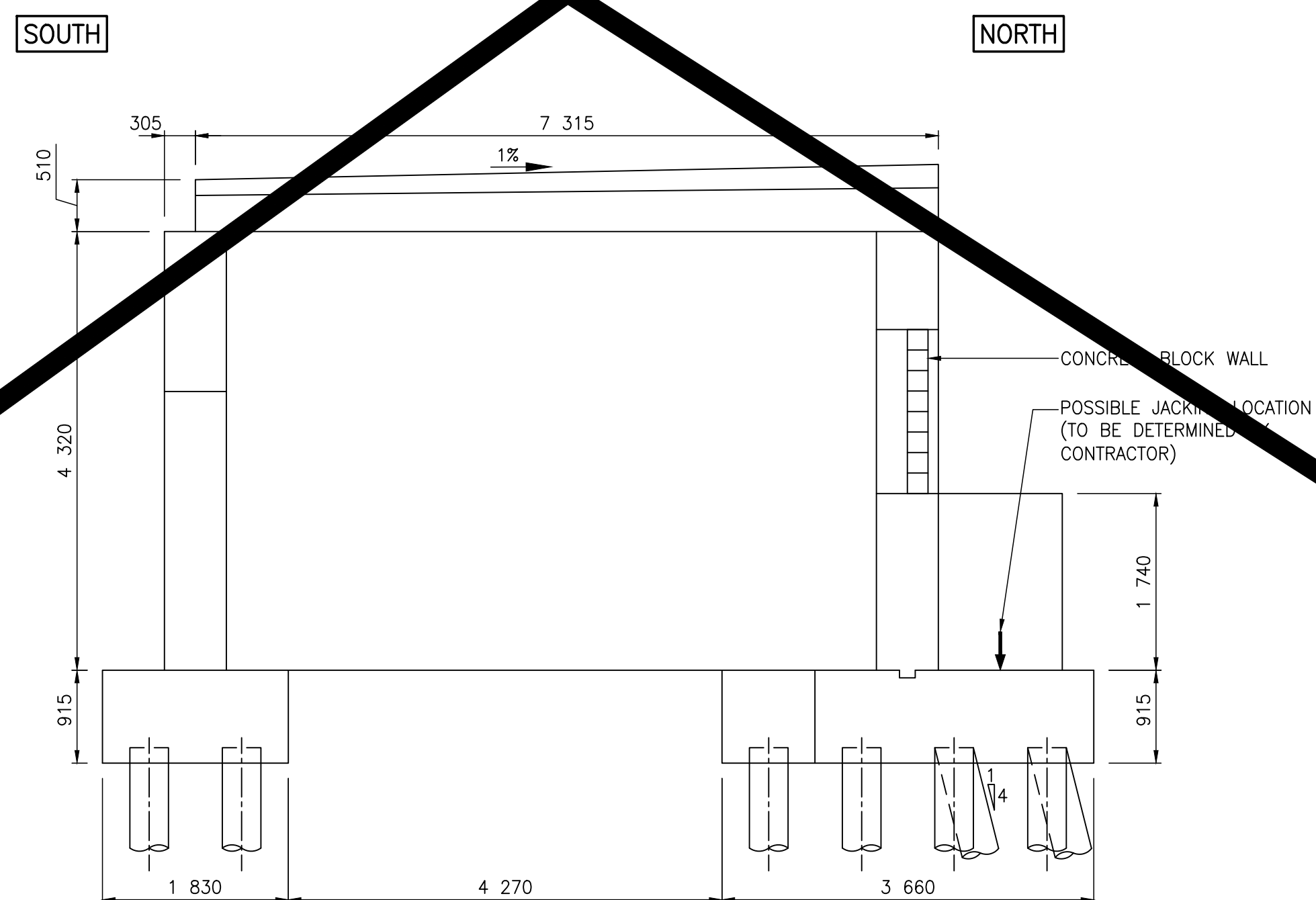
PIER 3 SIDE ELEVATION
SCALE 1:50



PIER 3 END ELEVATION
SCALE 1:50



SOUTH ABUTMENT PLAN VIEW
SCALE 1:50



SECTION 
SCALE 1:50

SOUTH ABUTMENT CROSS-SECTIONAL VIEW



PHOTO OF ABUTMENT BETWEEN GIRDERS TO BE JACKED
(LOOKING SOUTH)

METRIC
ALL MEASUREMENTS IN MILLIMETRES
UNLESS OTHERWISE STATED

LOCATIONS APPROVED UNDERGROUND STRUCTURES				<div><div>G.B.M.</div><div>ELEV.</div></div>				<div><div><div><div></div></div></div><div>WSP</div><div>WSP Canada Inc. 1600 Buffalo Place Winnipeg MB R3T 6B8 T+ 1 204-943-3178 www.wsp.com</div></div>				<div>ENGINEER'S SEAL</div>				<div><div><div><div></div></div></div><div>THE CITY OF WINNIPEG</div><div>PUBLIC WORKS DEPARTMENT</div><div>ENGINEERING DIVISION</div><div>Winnipeg</div></div>							
SIGNED BY: _____				_____				DESIGNED BY GN				CHECKED BY EH				MIDTOWN BRIDGE MAINTENANCE REPAIRS AND RELATED WORKS				CITY DRAWING NUMBER B114-25-07			
SUPV U/G STRUCTURES _____				_____				DRAWN BY CP				APPROVED BY MLW								BID OPPORTUNITY NUMBER 329-2025			
LOCATION OF UNDERGROUND STRUCTURES AS SHOWN ARE BASED ON THE BEST INFORMATION AVAILABLE BUT NO GUARANTEE IS GIVEN THAT ALL EXISTING UTILITIES ARE SHOWN OR THAT THE GIVEN LOCATIONS ARE EXACT CONFIRMATION OF EXISTANCE AND EXACT LOCATION OF ALL SERVICES MUST BE OBTAINED FROM THE INDIVIDUAL UTILITIES BEFORE PROCEEDING								HOR. SCALE AS NOTED				RELEASED FOR CONSTRUCTION				PIER 3 AND SOUTH ABUTMENT JACKING LOCATIONS				SHEET 7 OF 9			
								VERTICAL AS NOTED				M. MADY, P.D. P. ENG. CITY OF WINNIPEG								REV 1			
				1 DRAWING REMOVED FOR ADDENDUM No. 3 25.06.12 MLW																			
0 ISSUED FOR TENDER 25.05.13 MLW																CONSULTANT PROJECT No. CA0047563.3090							
No. REVISIONS DATE BY								DATE 25.05.13				DATE											