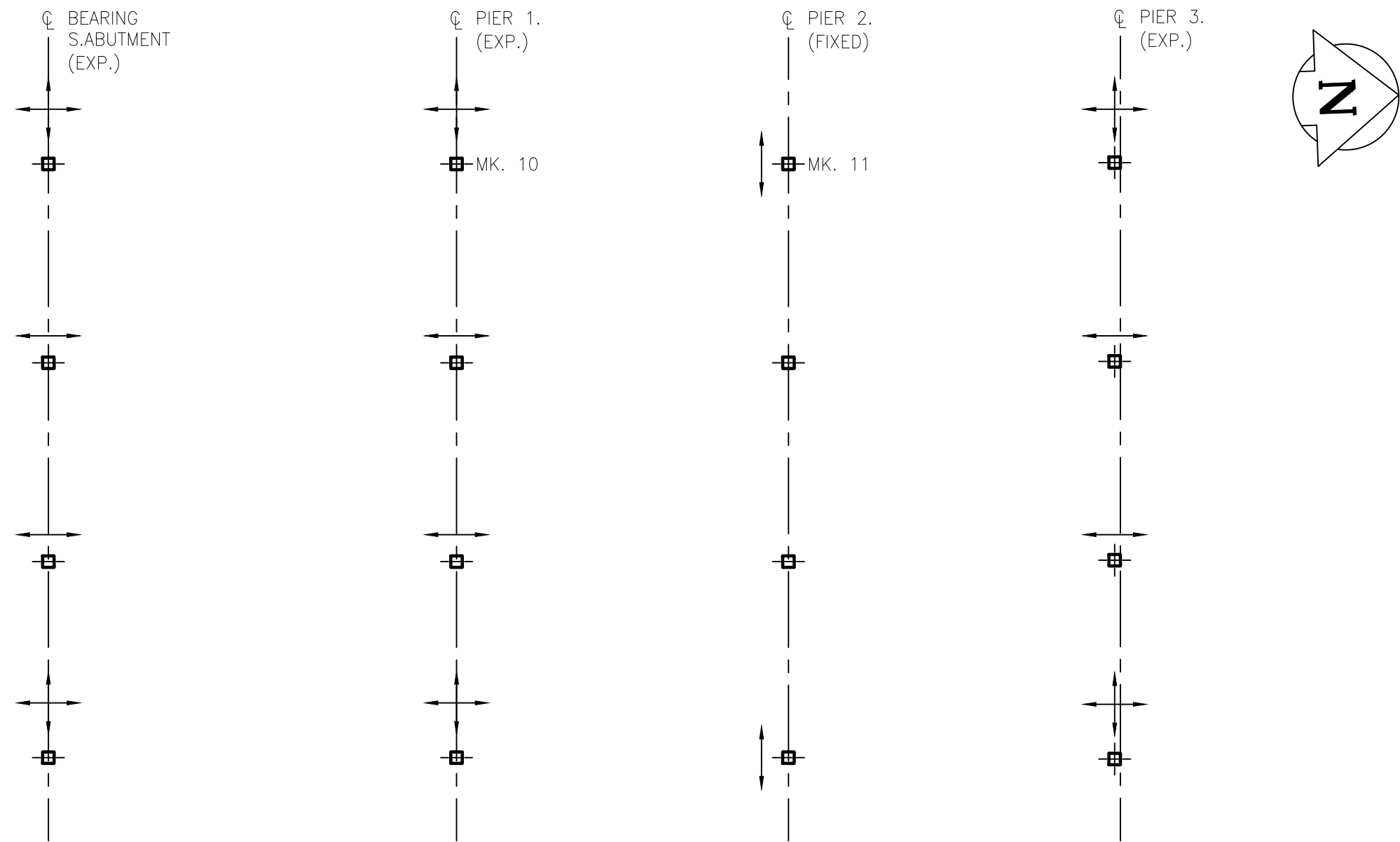
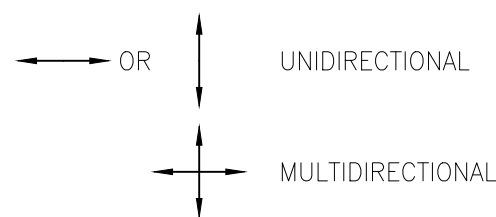


Plotted: May 12, 2025 at 5:22:14 PM | Last saved by: pathepathe
File: C:\Users\pathepathe\OneDrive\Documents\WSP Canada Projects (MEX)\CA0047563-3090 - Midtown Bridge Repairs - bearing repair details.dwg | Layout: 4 Bearing Repair Details



RIVER CROSSING SPAN - BEARING KEY PLAN
SCALE 1:200

BEARING LEGEND



NORTH

NORTH

SOUTH

WEST

EAST



PHOTO OF EXISTING MK. 10 BEARING AT PIER 1
(LOOKING SOUTHEAST)

NORTH

NORTH

SOUTH

WEST

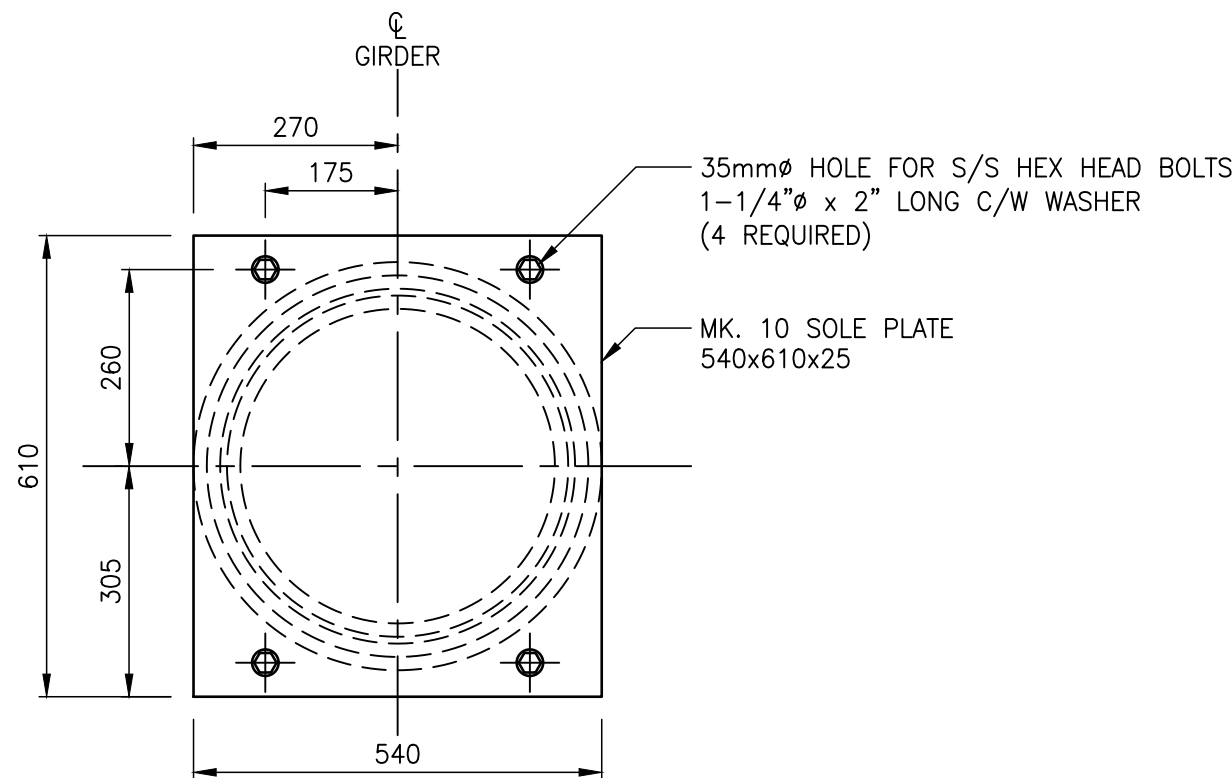
EAST

BEARING DESIGN DATA		
LOCATION	PIER 1	PIER 2
DEAD LOAD	2640	2640

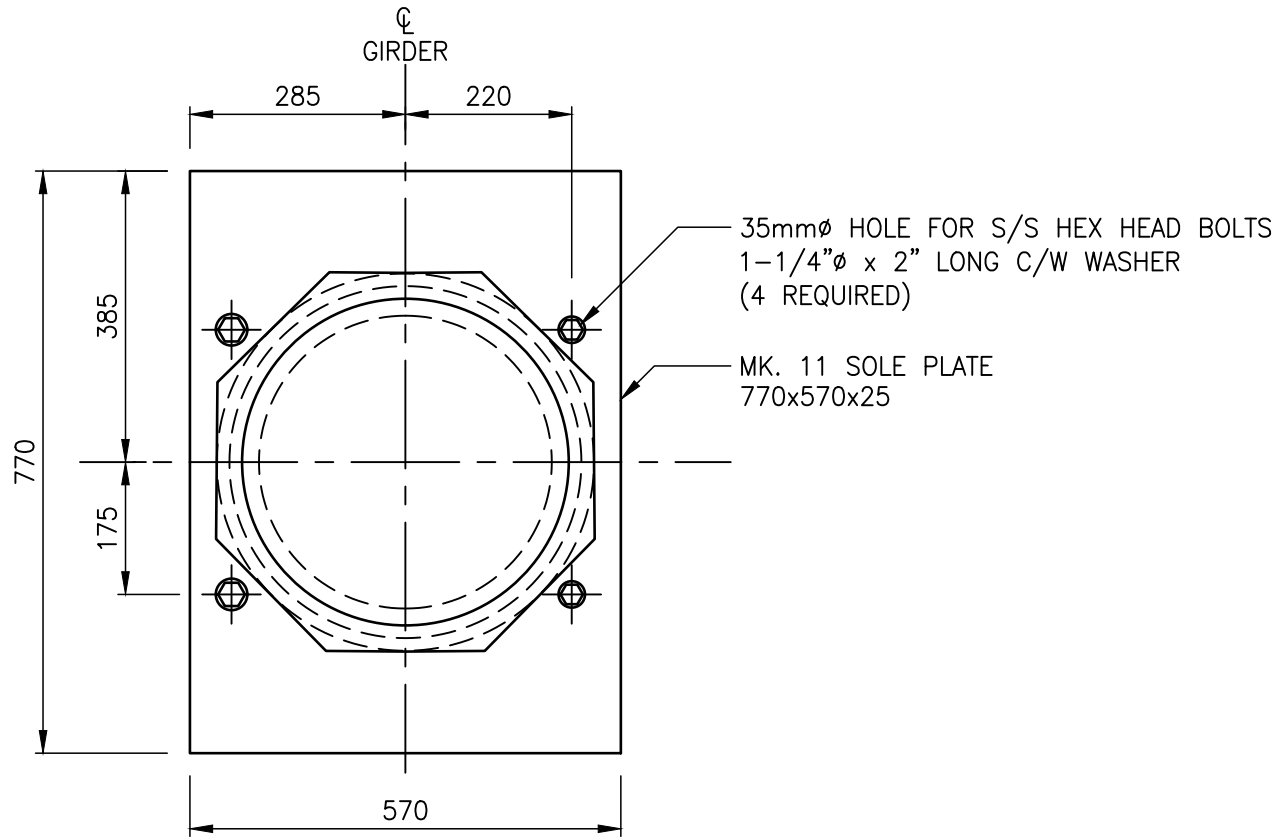
*LOADS EXPRESSED IN KILONEWTONS.



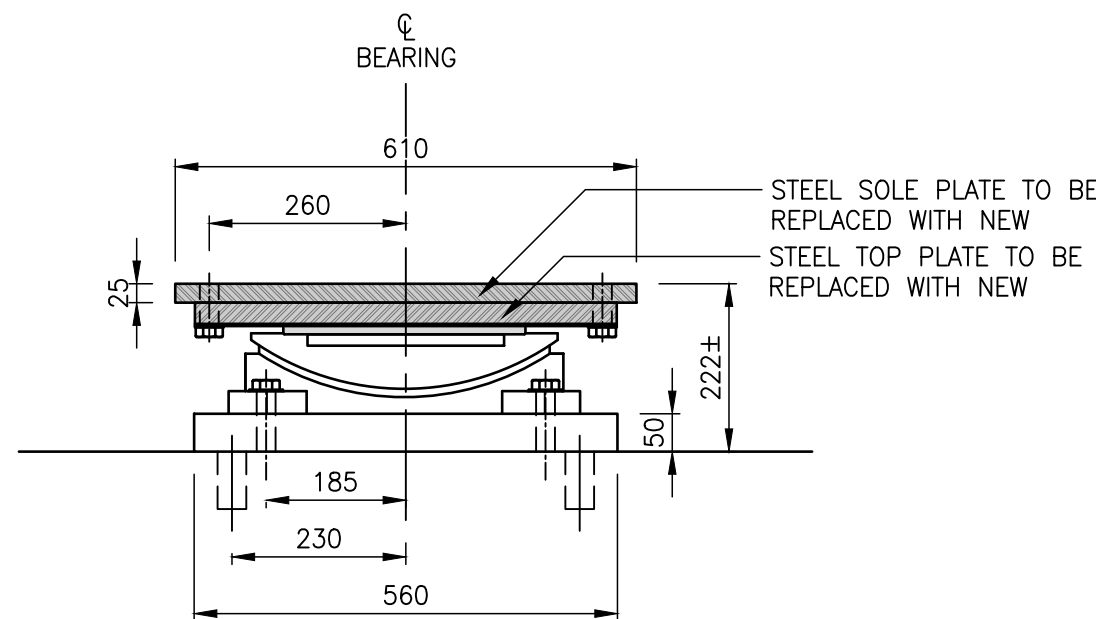
PHOTO OF EXISTING MK. 11 BEARING AT PIER 2
(LOOKING SOUTHEAST)



MULTIDIRECTIONAL SPHERICAL SLIDING BEARING (MK. 10)
SCALE 1:10



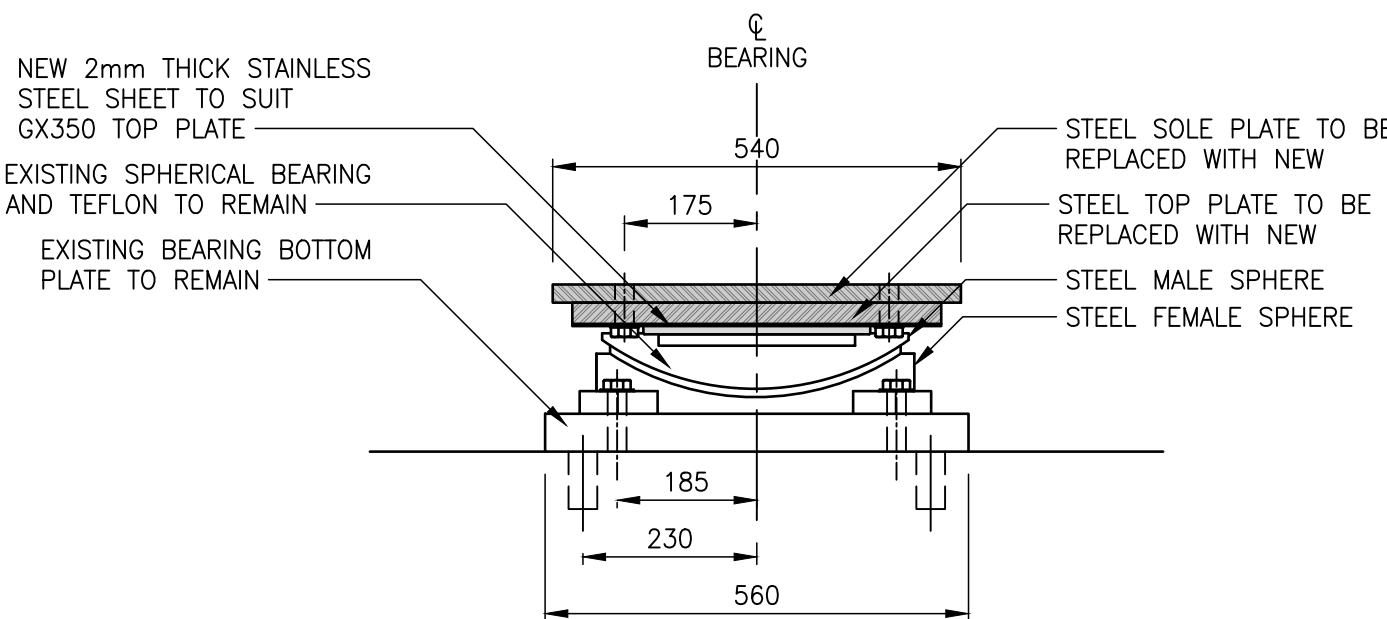
UNIDIRECTIONAL SPHERICAL SLIDING BEARING (MK. 11)
SCALE 1:10



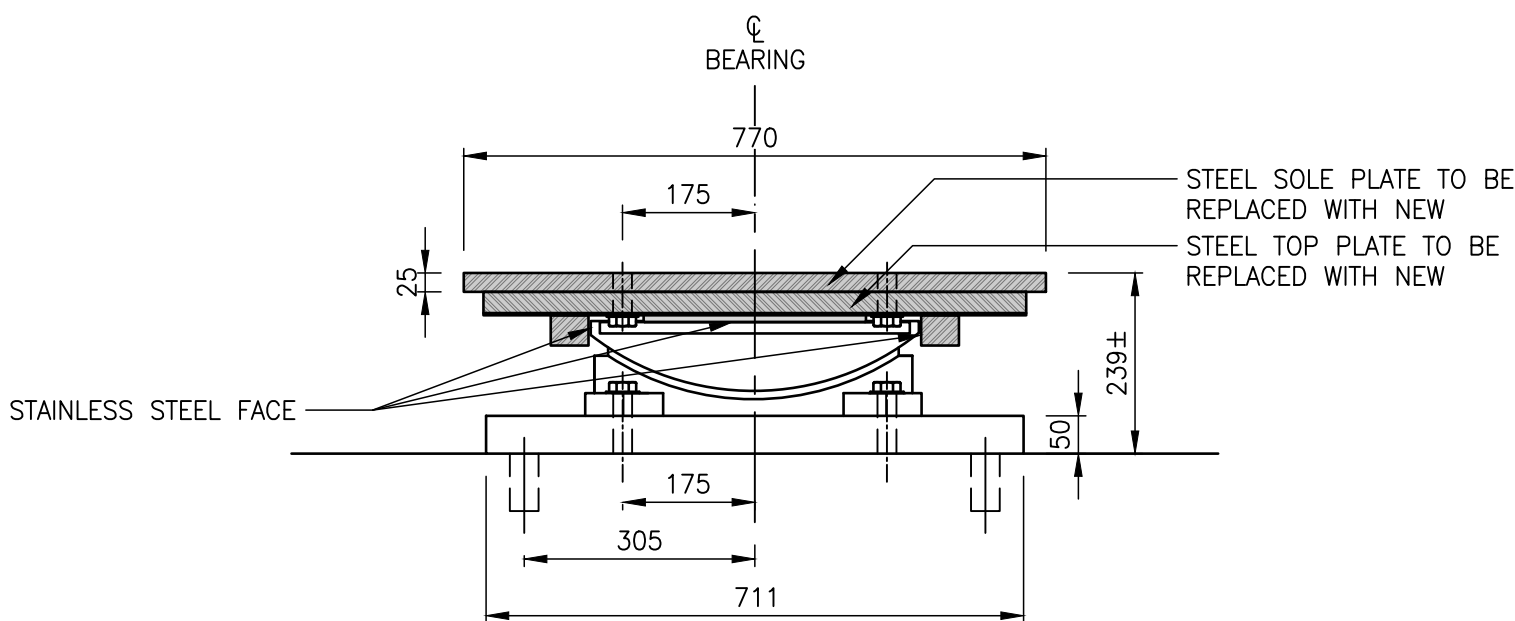
LONGITUDINAL ELEVATION

MULTIDIRECTIONAL SPHERICAL SLIDING BEARING (MK. 10)

SCALE 1:10
(MASS PER MK. 10 SOLE PLATE = 66kg
MASS PER MK. 10 STEEL TOP PLATE = 55kg)



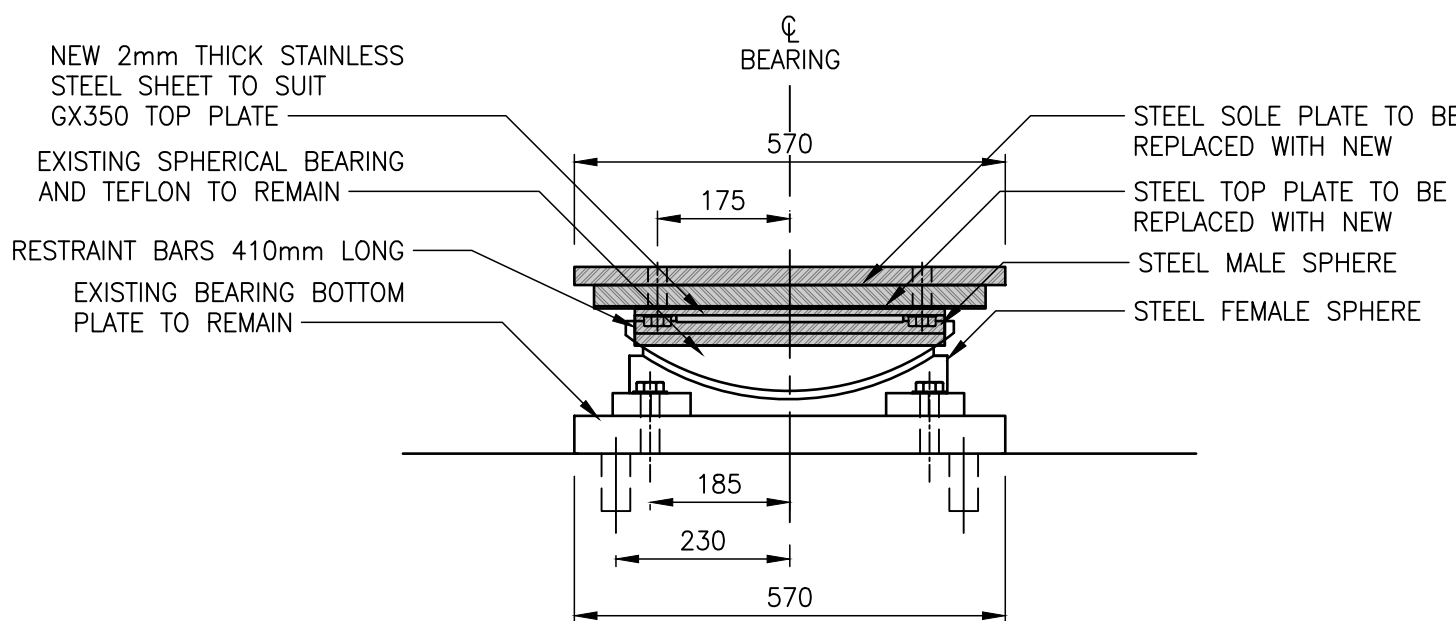
TRANSVERSE ELEVATION



LONGITUDINAL ELEVATION

UNIDIRECTIONAL SPHERICAL SLIDING BEARING (MK. 11)

SCALE 1:10
(MASS PER MK. 11 SOLE PLATE = 88kg
MASS PER MK. 11 STEEL TOP PLATE = 75kg)



TRANSVERSE ELEVATION

MK. 10 AND MK. 11 BEARING TOP PLATES AND RESTRAINING BARS TO BE FIELD MEASURED AND REPLACED WITH NEW

NOTE:
These design documents are prepared solely for the use by the party with whom the design professional has entered into a contract and there are no representations of any kind made by the design professional to any party with whom the design professional has not entered into a contract.



LOCATIONS APPROVED UNDERGROUND STRUCTURES		G.B.M. ELEV.		DESIGNED BY GN		CHECKED BY EH		ENGINEER'S SEAL		THE CITY OF WINNIPEG PUBLIC WORKS DEPARTMENT ENGINEERING DIVISION		CITY DRAWING NUMBER B114-25-04	
SIGNED BY: SUPV U/G STRUCTURES		DATE		DRAWN BY SB		APPROVED BY MLW		RELEASED FOR CONSTRUCTION				BID OPPORTUNITY NUMBER 329-2025	
LOCATION OF UNDERGROUND STRUCTURES AS SHOWN ARE BASED ON THE BEST INFORMATION AVAILABLE BUT NO GUARANTEE IS GIVEN THAT ALL EXISTING UTILITIES ARE SHOWN OR THAT THE GIVEN LOCATIONS ARE EXACT CONFIRMATION OF EXISTANCE AND EXACT LOCATION OF ALL SERVICES MUST BE OBTAINED FROM THE INDIVIDUAL UTILITIES BEFORE PROCEEDING		0 ISSUED FOR TENDER		25.05.13 MLW		AS NOTED AS NOTED		M. MADY, P. ENG. CITY OF WINNIPEG		CONSULTANT PROJECT No. CA0047563.3090		SHEET 4 OF 9	
		No. REVISIONS		DATE BY		25.05.13		DATE				REV 0	

METRIC

WHOLE NUMBERS INDICATE MILLIMETRES
DECIMALIZED NUMBERS INDICATE METRES