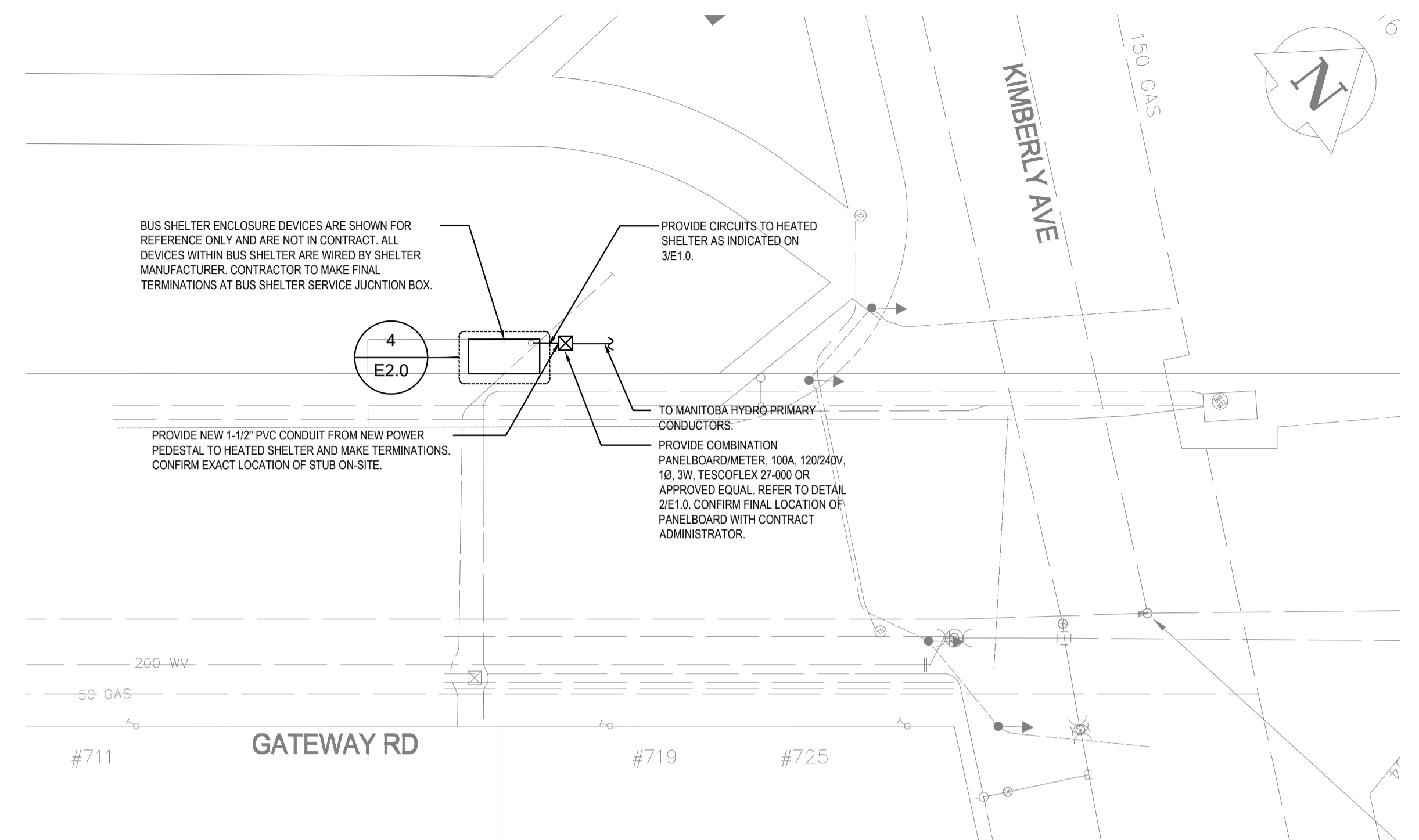
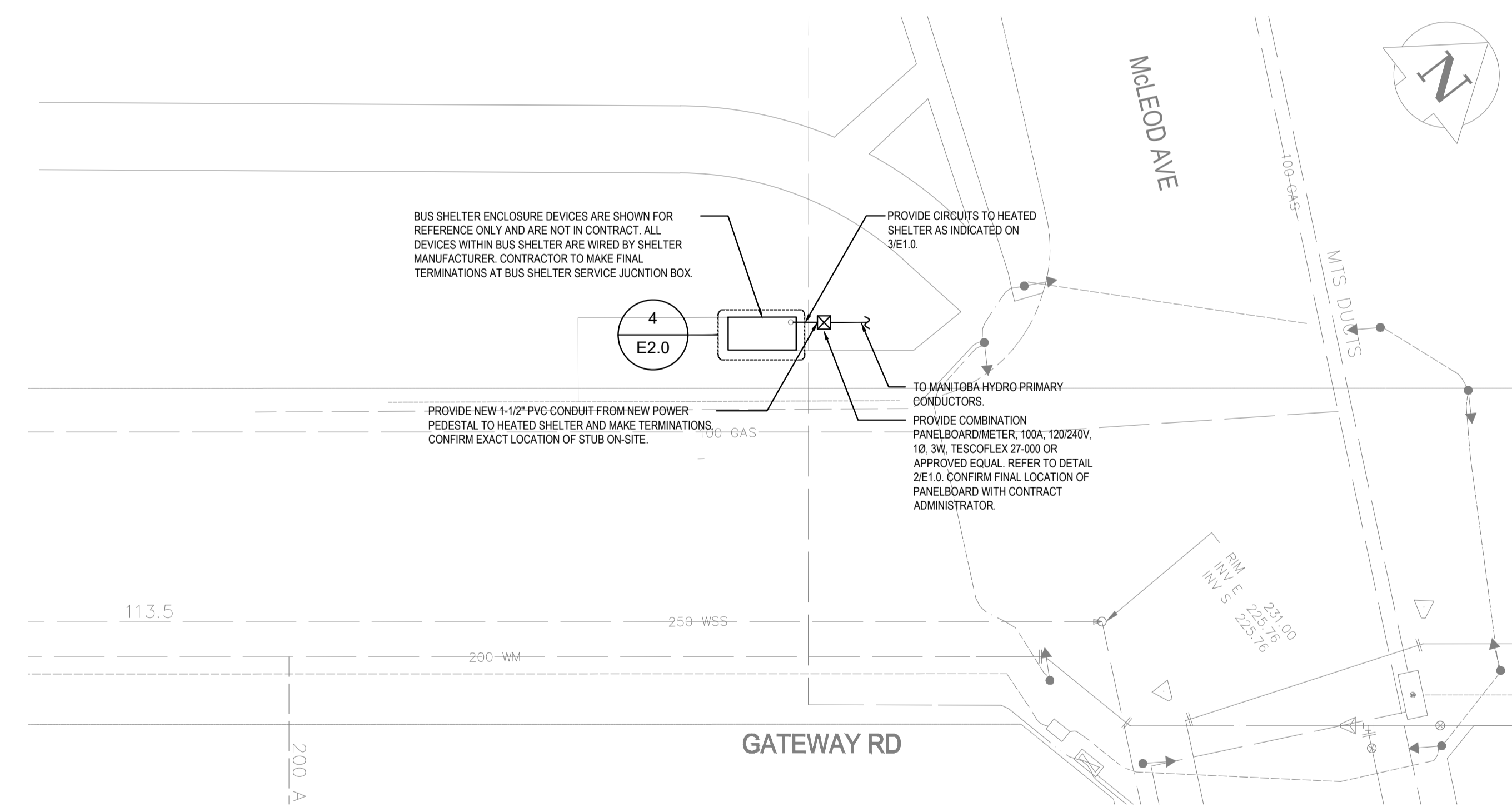


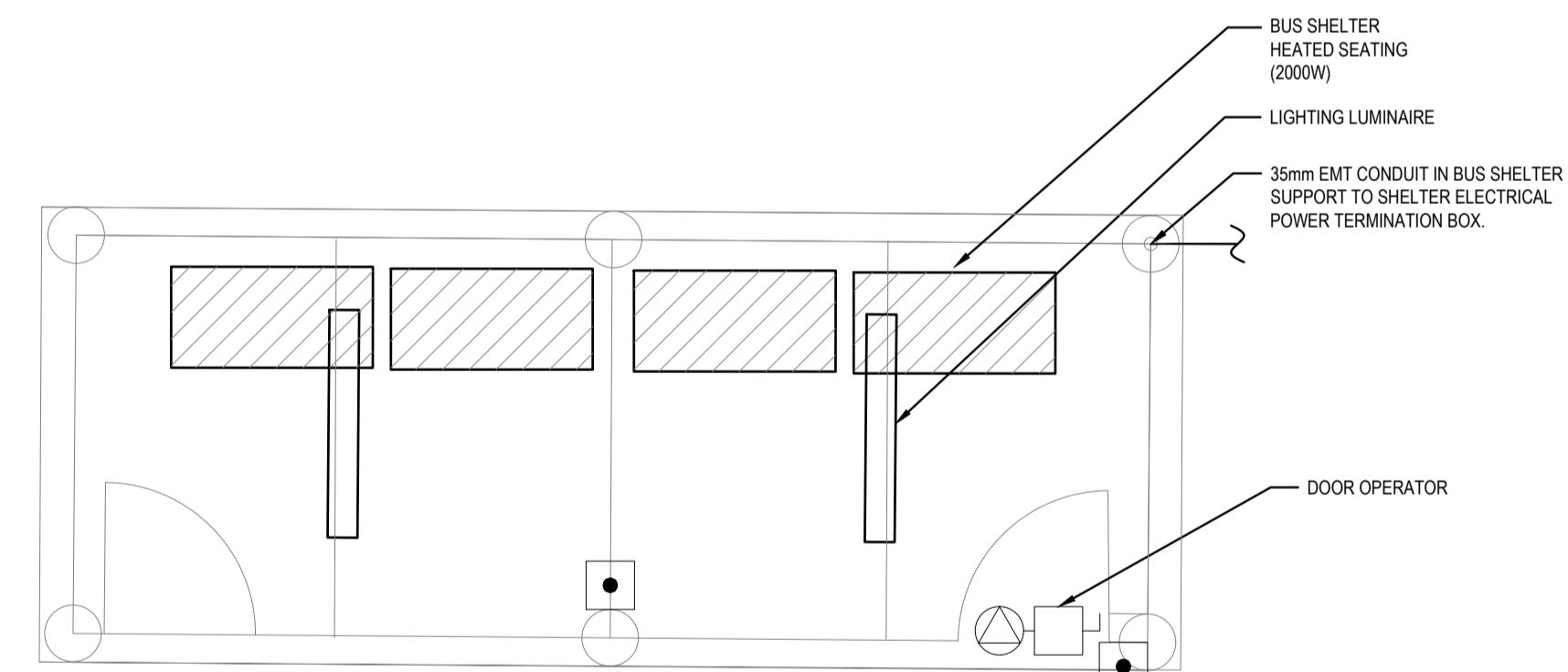
**1 MUNROE AVE - ELECTRICAL SITE PLAN**  
 E2.0 Scale: 1:250



**2 KIMBERLY AVE - ELECTRICAL SITE PLAN**  
 E2.0 Scale: 1:250



**3 MCLEOD AVE - ELECTRICAL SITE PLAN**  
 E2.0 Scale: 1:250



**4 ENLARGED HEATED SHELTER - ELECTRICAL LAYOUT**  
 E2.0 Scale: NTS

**GENERAL NOTES:**

1. VERIFY LOCATIONS OF UTILITIES AND PROTECT ALL ELECTRICAL EQUIPMENT AGAINST DAMAGE DURING CONSTRUCTION.
2. COORDINATE POLE BASE AND POWER LOCATIONS WITH CIVIL AND LANDSCAPE DRAWINGS.
3. TRENCHLINE IS SHOWN FOR APPROXIMATE ROUTING. CONTRACTOR SHALL CONFIRM AND COORDINATE ROUTING OF CONDUIT WITH SITE CONDITIONS.



**MCW Consultants Ltd.**  
 Vancouver Calgary  
 Edmonton Dauphin  
 Winnipeg Toronto  
 Thunder Bay  
 Ottawa Moncton  
 Saint John Truro  
 Halifax

210-1821 Wellington Avenue  
 Winnipeg, Manitoba  
 R3H 0G4  
 Tel: 204-779-7900  
 Fax: 204-779-1119  
 www.mcw.com

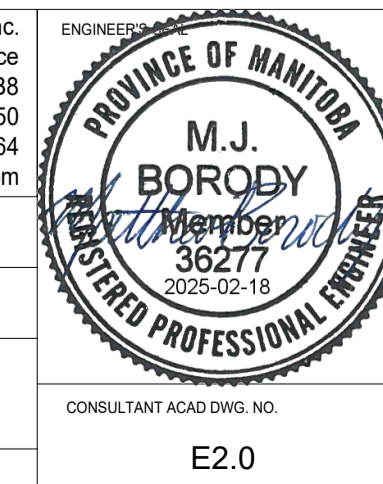
**LOCATIONS APPROVED UNDERGROUND STRUCTURES**

SIGNED BY: \_\_\_\_\_ DATE: \_\_\_\_\_  
 SUPV UG STRUCTURES

LOCATION OF UNDERGROUND STRUCTURES AS SHOWN ARE BASED ON THE BEST INFORMATION AVAILABLE BUT NO GUARANTEE IS GIVEN THAT ALL EXISTING UTILITIES ARE SHOWN OR THAT THE GIVEN LOCATIONS ARE EXACT CONFIRMATION OF EXISTENCE AND EXACT LOCATION OF ALL SERVICES MUST BE OBTAINED FROM THE INDIVIDUAL UTILITIES BEFORE PROCEEDING

NO.	REVISIONS	DATE	BY
0	ISSUED FOR TENDER	2025-02-18	MJB

<b>wsp</b>		WSP Canada Inc. 1600 Buffalo Place Winnipeg, MB R3T 6B8 t: 204.477.6650 f: 204.474.2864 www.wsp.com	
DESIGNED BY	JDV	CHECKED BY	MJB
DRAWN BY	JDV	APPROVED BY	MJB
HOR. SCALE	VERTICAL	RELEASED FOR CONSTRUCTION	
DATE	DATE	DATE	2025-02-18



**THE CITY OF WINNIPEG**  
 PUBLIC WORKS DEPARTMENT  
 ENGINEERING SERVICES DIVISION

2025 TRANSIT INFRASTRUCTURE IMPROVEMENTS  
 VARIOUS LOCATIONS - ELECTRICAL

TENDER NO. 33-2025

SHEET 11 OF 12