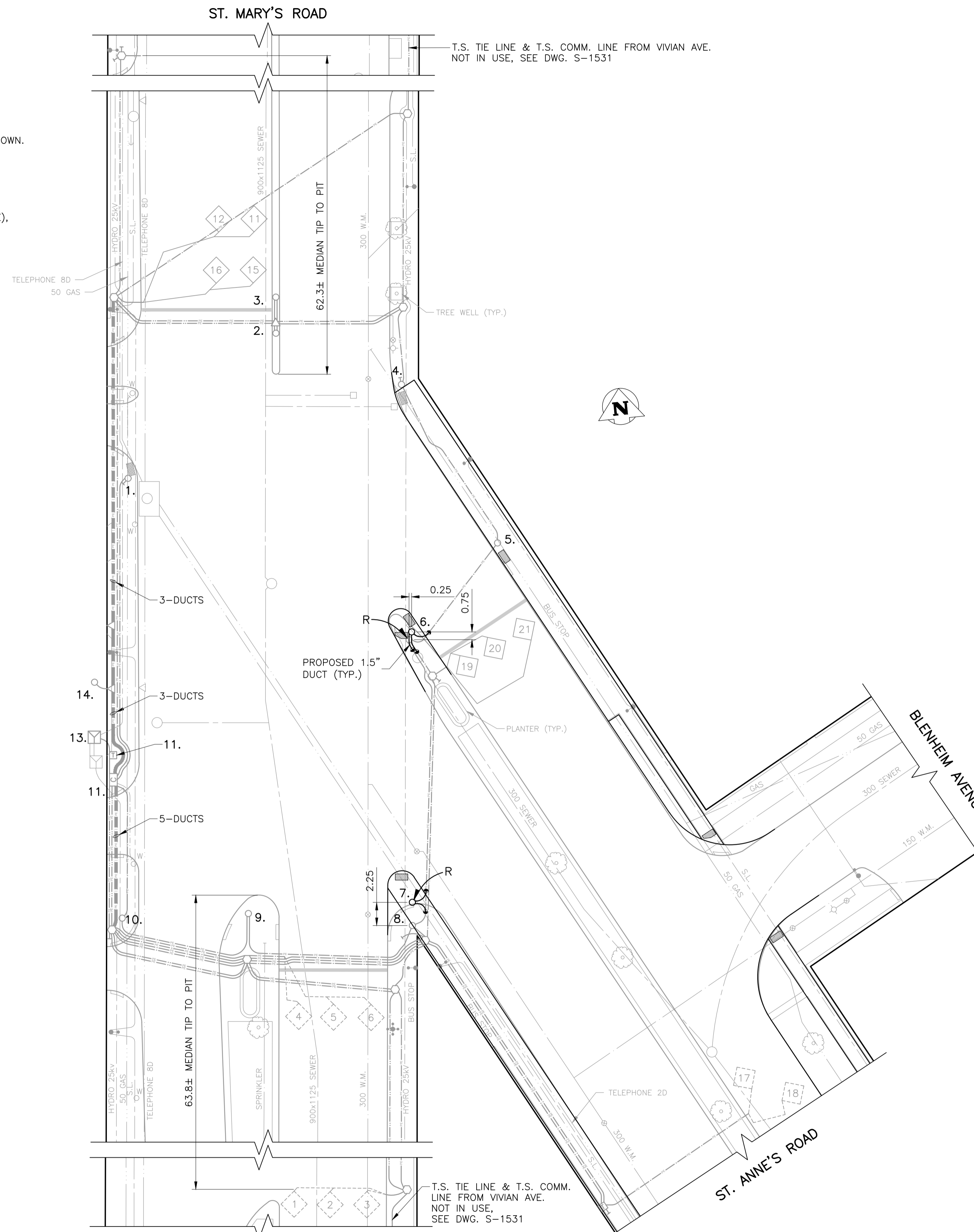


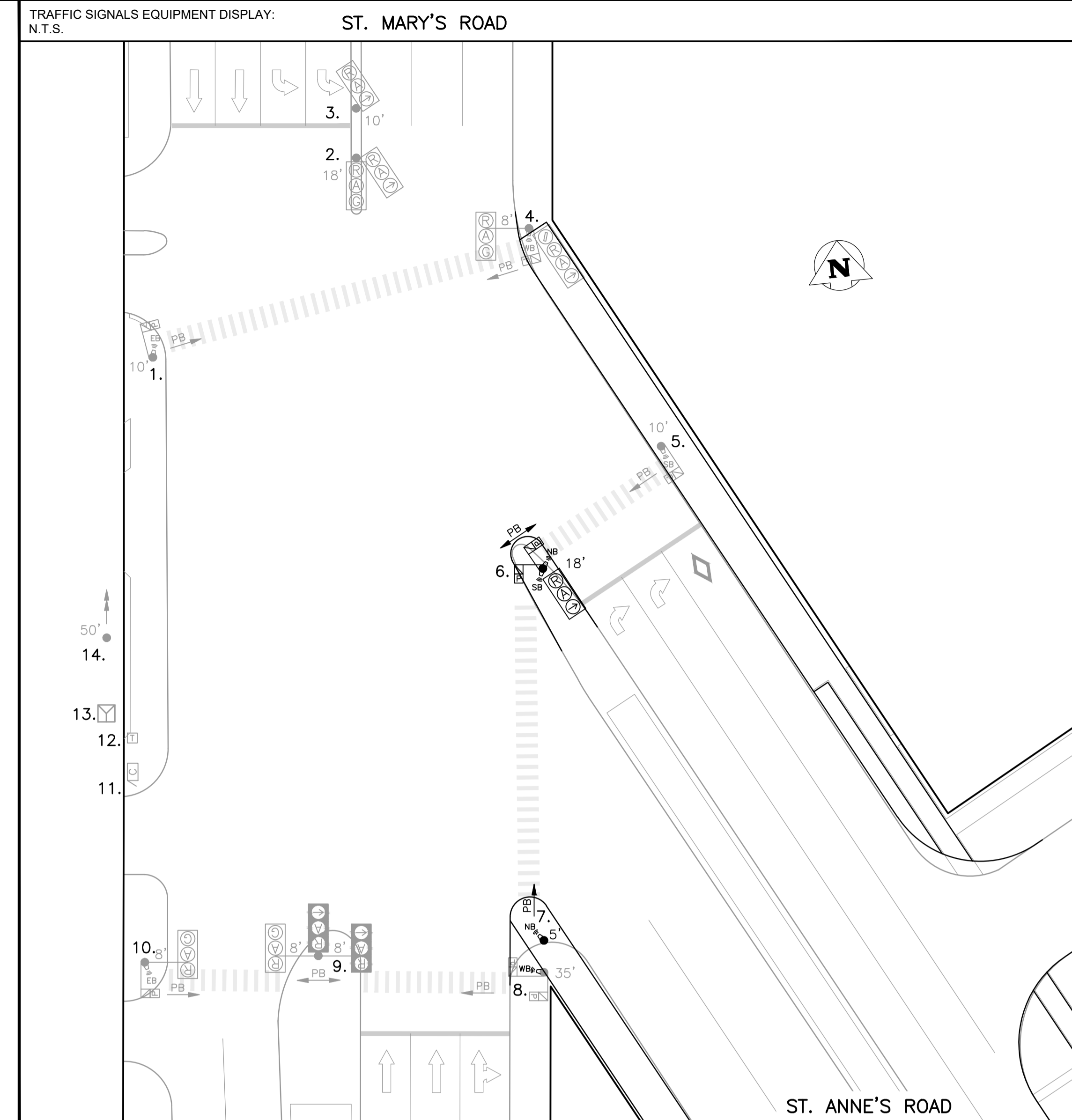
**CONSTRUCTION NOTES:**

- PROJECT SCOPE**
1. INSTALL CONDUIT AND BASES AS SHOWN.
  2. INSTALL EQUIPMENT AS SHOWN.
  3. TIMINGS REQUIRED.

- PROJECT COORDINATION**
1. COORDINATE WORK WITH (CA'S NAME), (204) XXX-XXXX.



**PLAN VIEW: UNDERGROUND CONSTRUCTION**  
1:250



EQUIPMENT DISPLAY LEGEND				EQUIPMENT LIST				EQUIPMENT LIST			
EXISTING	PROPOSED (AS SHOWN BELOW)	NO.	DESCRIPTION	ARM	BASE	B.B.	NO.	DESCRIPTION	ARM	BASE	B.B.
		1.	10' SIGNAL		A	A	11.	CONTROLLER			
		2.	18" SIGNAL		A	A	12.	DISCONNECT PEDESTAL SERVICE: BREAKER BOX INSIDE			
		3.	10' SIGNAL		A	A	13.	HYDRO TRANSFORMER: SECONDARY SERVICE			
		4.	DAVIT	8'	A	A	14.	50' TOWER POLE FOLDING NORTH 2-ANTENNAS			K
		5.	10' SIGNAL		A	A					
		6.	18" SIGNAL		G	G					
		7.	5' SIGNAL		M	M					
		8.	35' SIGNAL FOR TMC CAMERA		A	AD					
		9.	DOUBLE DAVIT	8'8"	A	AD					
		10.	DAVIT	8'	A	AD					

TRAFFIC SIGNALS UNDERGROUND LEGEND				SIGNAL BASE BOLT SQUARE TYPES			
EXISTING	ABANDONED	PROPOSED (AS SHOWN BELOW)	DISCONNECTED (LOOPS ONLY)	BOLT SQUARE (B.S.) DIA.			
				TYPE "A" - 8 1/8"			
				TYPE "B" - 6 3/4"			
				TYPE "C" - 8 1/8" SCREW TYPE			
				TYPE "D" - 12 3/4" DIA. BOLTS, 24" DIA.			
				TYPE "E" - 12 3/4" DIA. BOLTS, 28" DIA.			
				TYPE "F" - 9 9/16" SCREW TYPE			
				TYPE "G" - 8 1/8", 1 1/4" DIA. BOLTS, 89mm PROJ.			
				TYPE "H" - 10 5/8", 1 1/4" DIA. BOLTS			
				TYPE "I" - 10 5/8", 1 1/4" DIA. BOLTS			
				TYPE "J" - 6", 5/8" DIA. BOLTS			
				TYPE "K" - 10 5/8", PRECAST, 1 1/4" DIA. BOLTS			
				TYPE "L" - 6", 5/8" DIA. BOLTS			
				TYPE "M" - 8 1/8", 5/8" DIA. BOLTS			
				TYPE "PM" - 8 1/8", PRECAST, 5/8" DIA. BOLTS			

INTERNAL REVIEW			
TIMINGS (INITIAL):	NEW TIMING?	DATE	INITIALS
TIMINGS (PRE-FC):	NEW TIMING?	DATE	INITIALS
OPERATIONS:	DAYS REQUIRED	DATE	INITIALS
UNDERGROUND CONSTRUCTABILITY:	DAYS REQUIRED	DATE	INITIALS
LAB:	REQUIRE IFC DWG?	DAYS REQUIRED	DATE
TMC:		DATE	INITIALS
STREET LIGHTING:		DATE	INITIALS
TRAFFIC MANAGEMENT:		DATE	INITIALS

EXISTING	LEGEND	PROPOSED	EXISTING	LEGEND	PROPOSED	EXISTING	LEGEND	PROPOSED
	WATERMAIN			GAS			TELEPHONE	
	HYDRANT			TELEPHONE			WOOD POLE	
	VALVE			COMMUNICATION			STREET LIGHT	
	SHUTOFF VALVE			RAILWAY POLE			FENCE	
	SEWER			GUY-WIRE			GUARDRAIL	
	MANHOLE			TREE				
	CATCH BASIN							
	CURB INLET							
	HYDRO							

UNDERGROUND STRUCTURES	
UNDERGROUND STRUCTURES ID	DATE (YYYY/MM/DD)
WATER & WASTE REVIEW ID	

CONSTRUCTION REVISIONS			
NO.	REVISION	DATE (YYYY/MM/DD)	BY
A	ISSUED FOR INTERNAL REVIEW		

DESIGNED BY	J.S.
DRAWN BY	J.S.
CHECKED BY	
APPROVED BY	

ACCOUNTS:

ENGINEER'S SEAL:

PRELIMINARY

NOT FOR CONSTRUCTION

**THE CITY OF WINNIPEG**  
PUBLIC WORKS DEPARTMENT  
TRANSPORTATION DIVISION

**TRAFFIC SIGNALS**  
ST. ANNE'S RD. & ST. MARY'S RD.

UNITS: ALL DIMENSIONS ARE IN METERS UNLESS OTHERWISE NOTED

DRAWING NUMBER: S-1117

U:\Staff\Engineering\Transportation\St. Anne's & St. Mary's\DWG\Traffic\St. Anne's & St. Mary's\1117.dwg  
 11/11/2024 10:58:11 AM  
 11/11/2024 10:58:11 AM  
 11/11/2024 10:58:11 AM