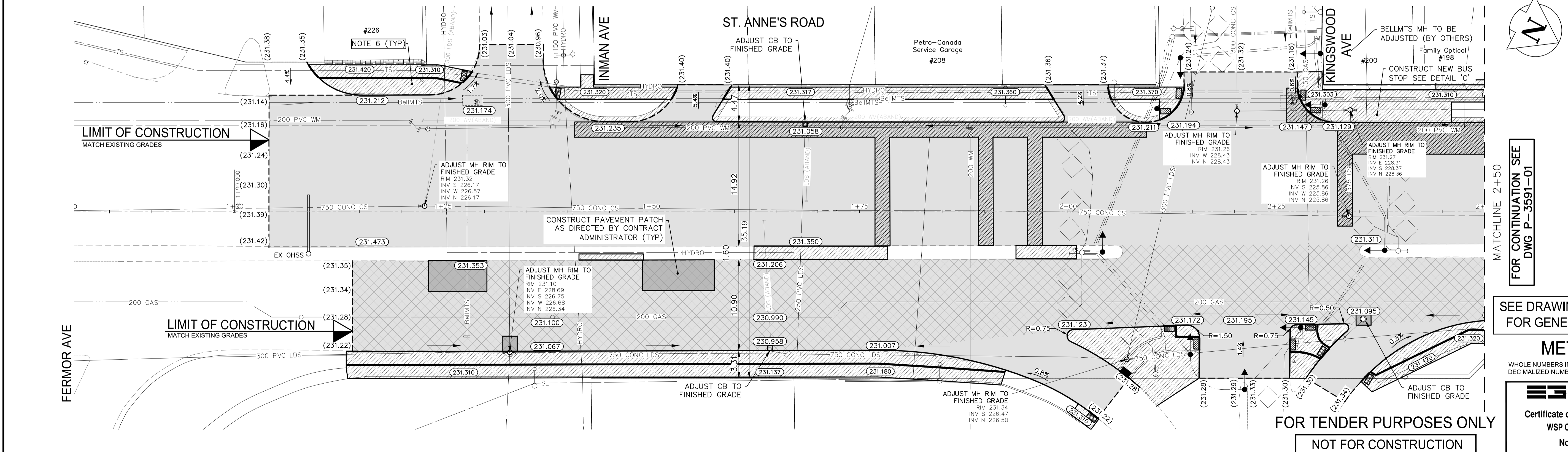
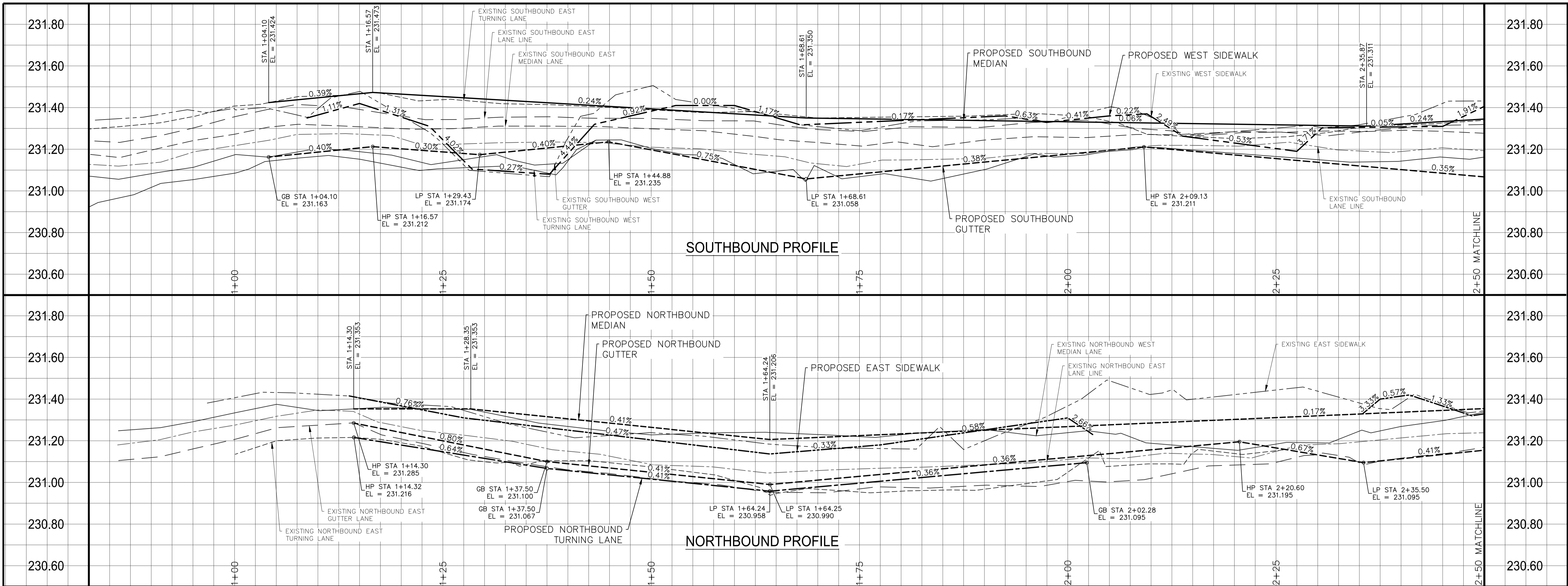


Feb 13, 2025 - 2:34pm  
 P:\2024\CA0043377\5914 - CA-2025 St. Annes Rd\02 Drawings\03\_Work\CA0043377\5914\_St. Annes Rd\_Plan&Profile.dwg - Job:34-2025\_Drawing\_P-3591-01-RA



MATCHLINE 2+50  
 FOR CONTINUATION SEE  
 DWG P-3591-01

SEE DRAWING P-3591-02  
 FOR GENERAL NOTES

**METRIC**  
 WHOLE NUMBERS INDICATE MILLIMETRES  
 DECIMALIZED NUMBERS INDICATE METRES

**ENGINEERS  
 GEOSCIENTISTS  
 MANITOBA**  
 Certificate of Authorization  
 WSP Canada Inc.  
 No. 5750

FOR TENDER PURPOSES ONLY  
 NOT FOR CONSTRUCTION

EXISTING	LEGEND-PLAN	PROPOSED	EXISTING	LEGEND-PLAN	PROPOSED	EXISTING	LEGEND-PLAN	PROPOSED
---	WATER MAIN	---	---	VALVE	---	---	EDGE OF SIDEWALK	---
---	LAND DRAINAGE SEWER	---	---	CURB STOP	---	---	EDGE OF ASPHALT	---
---	WASTE WATER SEWER	---	---	HYDRO POLE & LIGHT STANDARD	---	---	EDGE OF CONCRETE	---
---	HYDRO	---	---	LIGHT STANDARD OR TRAFFIC SIGNAL	---	---	MODIFIED BARRIER CURB	---
---	GAS	---	---	HYDRO POLE / ANCHOR	---	---	BARRIER CURB	---
---	COMMUNICATIONS	---	---	FENCE	---	---	BARRIER CURB AND GUTTER	---
---	SIGNALS	---	---	PROPERTY LINE	---	---	PAVING STONE	---
○	MANHOLE	●	---	TEST HOLE / PAVEMENT CORE	---	---	CONCRETE SIDEWALK	---
□	CATCH BASIN/CATCH PIT	■	---	ELEVATIONS	---	---	CONCRETE SLAB	---
△	CURB INLET	▼	---	CURB RAMP	---	---	ASPHALT	---
◇	UTILITIES ADJUSTED	◇	---	DETECTABLE WARNING SURFACE TILE	---	---	PAVEMENT PATCH	---
◇	HYDRANT	◆	---		---	---	PAVEMENT REPAIR FABRIC	---
---	EXISTING	---	---		---	---		---

**LOCATIONS APPROVED UNDERGROUND STRUCTURES**

SIGNED BY: \_\_\_\_\_ DATE: \_\_\_\_\_

SUPV UG STRUCTURES

LOCATION OF UNDERGROUND STRUCTURES AS SHOWN ARE BASED ON THE BEST INFORMATION AVAILABLE BUT NO GUARANTEE IS GIVEN THAT ALL EXISTING UTILITIES ARE SHOWN OR THAT THE GIVEN LOCATIONS ARE EXACT CONFIRMATION OF EXISTENCE AND EXACT LOCATION OF ALL SERVICES MUST BE OBTAINED FROM THE INDIVIDUAL UTILITIES BEFORE PROCEEDING

NO.	REVISIONS	DATE	BY
7			
6			
5			
4			
3			
2			
1			
0	ISSUED FOR TENDER	2025/02/13	MV

**wsp**

WSP Canada Inc.  
 1600 Buffalo Place  
 Winnipeg, MB R3T 6B8  
 t. 204.477.6650  
 f. 204.474.2864  
 www.wsp.com

DESIGNED BY: MV  
 CHECKED BY: SS  
 DRAWN BY: RB  
 APPROVED BY: SS

HOR. SCALE: 1:250  
 VERTICAL: 1:10

RELEASED FOR CONSTRUCTION: \_\_\_\_\_  
 DATE: 2024/12/06

**THE CITY OF WINNIPEG**  
 PUBLIC WORKS DEPARTMENT  
 ENGINEERING SERVICES DIVISION

2025 ST. ANNE'S ROAD PAVEMENT RENEWALS  
 MAJOR REHABILITATION

ST. ANNE'S ROAD  
 FERMOR AVE TO ST. MARY'S RD  
 STA. 0+80 TO STA. 2+50

CITY DRAWING NUMBER: P-3591-01  
 SHEET 01 OF 13  
 TENDER NO. 34-2025

CONSULTANT ACAD DWG. NO. CA0043377.5914-01