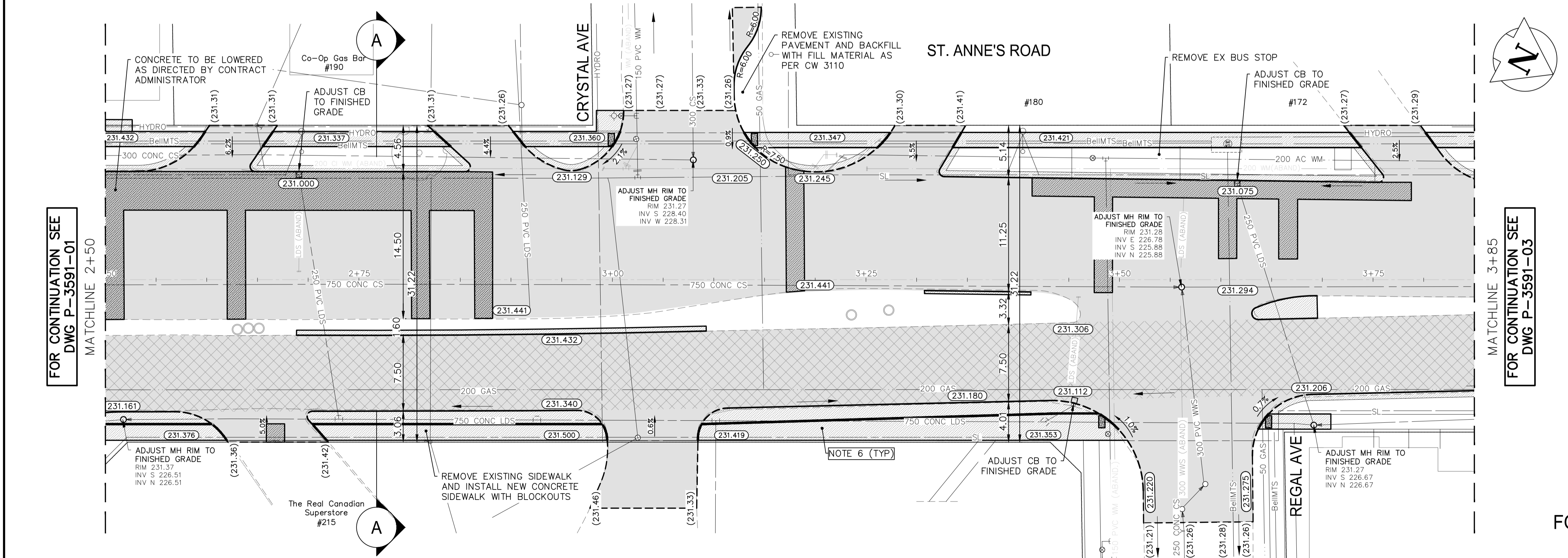
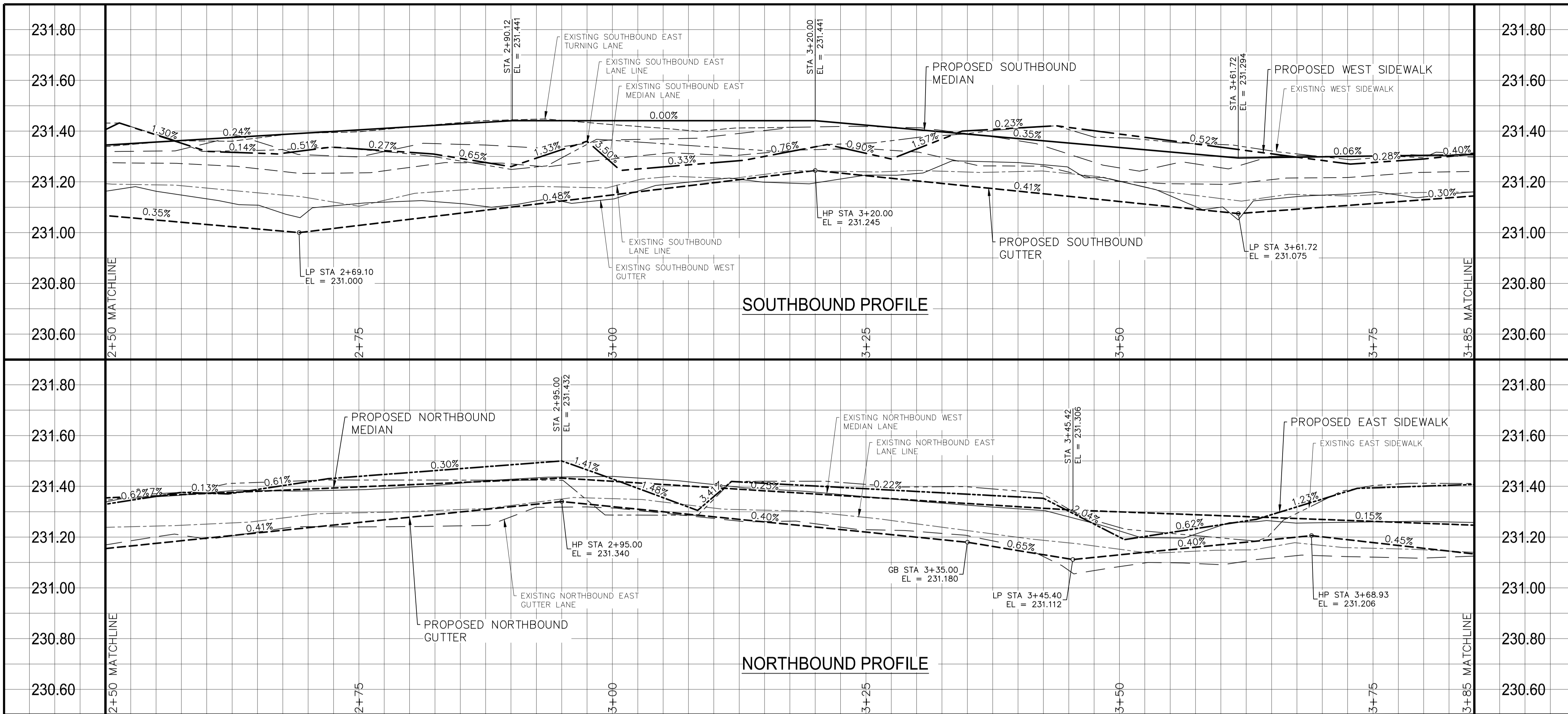


Feb 13, 2025 - 2:34pm
 P:\2024\CA0043377\5914 - CA-2025 St. Annes Rd\02 Drawings\03_Work_Dwg\CA0043377_5914_St. Annes Rd_Plan&Profile.dwg - Job:34-2025_Drawing_P-3591-02-RA



- NOTES:**
1. ALL WORK AND MATERIALS TO BE IN ACCORDANCE WITH THE LATEST REVISION OF THE CITY OF WINNIPEG STANDARD CONSTRUCTION SPECIFICATIONS.
 2. CONTRACTOR TO CONFIRM THE LOCATION OF ALL UTILITIES/SERVICES IN THE FIELD PRIOR TO CONSTRUCTION.
 3. ALL ROADWAY DIMENSIONS SHOWN ARE TO BACK OF CURB.
 4. EXISTING ASPHALT TO BE PLANED AS SHOWN OR AS DIRECTED BY CONTRACT ADMINISTRATOR.
 5. 200mm PARTIAL CONCRETE SLAB PATCHES SHOWN ARE ONLY A REPRESENTATIVE APPROXIMATION OF THE TENDERED QUANTITIES.
 6. CONSTRUCT MONOLITHIC CURB AND SIDEWALK WITH BLOCKOUTS AS PER SD-228B, DETAIL 'A' AND AS DIRECTED BY CONTRACT ADMINISTRATOR.
 7. ALL PRIVATE WALKWAYS TO BE ADJUSTED TO NEW SIDEWALK OR TOP OF CURB ELEVATION, AS DIRECTED BY THE CONTRACT ADMINISTRATOR.
 8. PAVEMENT REPAIR FABRIC TO BE INSTALLED AS SHOWN OR AS DIRECTED BY CONTRACT ADMINISTRATOR.
 9. BARRIER CURB REVEAL TO BE 100mm EXCEPT WHERE NOTED OTHERWISE OR DIRECTED BY CONTRACT ADMINISTRATOR.
 10. MODIFIED BARRIER CURB TO BE CONSTRUCTED AT ALL INTERSECTION RADII.
 11. CONTRACTORS TO TAKE PRECAUTIONARY STEPS TO PROTECT EXISTING TREES WITHIN THE LIMITS OF CONSTRUCTION FROM DAMAGE FROM CONSTRUCTION ACTIVITIES AS OUTLINED IN THE SPECIFICATIONS.
 12. LAMP STANDARDS, HYDRO POLES, AND ANCHORS THAT REQUIRE TEMPORARY SUPPORT, REMOVAL OR REPLACEMENT, TO BE DONE SO AT THE EXPENSE OF THE CONTRACTOR AS NECESSARY.
 13. ALL BOULEVARDS TO BE SODDED UNLESS OTHERWISE NOTED.
 14. ADJUST ALL WATER VALVES, HYDRANTS, MANHOLES, AND CATCH BASINS IN WORK AREA TO GRADE.
 15. SLAB REPLACEMENT REINFORCEMENT TO INCLUDE THE PLACEMENT OF DOWEL ASSEMBLIES AT JOINTS.
 16. OVERLAY EXISTING APPROACHES AS DIRECTED BY CONTRACT ADMINISTRATOR.

FOR CONTINUATION SEE DWG P-3591-03

FOR CONTINUATION SEE DWG P-3591-01

FOR TENDER PURPOSES ONLY
 NOT FOR CONSTRUCTION

METRIC
 WHOLE NUMBERS INDICATE MILLIMETRES
 DECIMAL NUMBERS INDICATE METRES

**ENGINEERS
 GEOSCIENTISTS
 MANITOBA**
 Certificate of Authorization
 WSP Canada Inc.
 No. 5750

EXISTING	LEGEND-PLAN	PROPOSED	EXISTING	LEGEND-PLAN	PROPOSED	EXISTING	LEGEND-PLAN	PROPOSED
---	WATER MAIN	---	---	VALVE	---	---	EDGE OF SIDEWALK	---
---	LAND DRAINAGE SEWER	---	---	CURB STOP	---	---	EDGE OF ASPHALT	---
---	WASTE WATER SEWER	---	---	HYDRO POLE & LIGHT STANDARD	---	---	EDGE OF CONCRETE	---
---	HYDRO	---	---	LIGHT STANDARD OR TRAFFIC SIGNAL	---	---	MODIFIED BARRIER CURB	---
---	GAS	---	---	HYDRO POLE / ANCHOR	---	---	BARRIER CURB	---
---	COMMUNICATIONS	---	---	FENCE	---	---	BARRIER CURB AND GUTTER	---
---	SIGNALS	---	---	PROPERTY LINE	---	---	PAVING STONE	---
○	MANHOLE	○	---	TEST HOLE / PAVEMENT CORE	---	---	CONCRETE SIDEWALK	---
□	CATCH BASIN/CATCH PIT	□	---	ELEVATIONS	---	---	CONCRETE SLAB	---
△	CURB INLET	△	---	CURB RAMP	---	---	ASPHALT	---
◇	UTILITIES ADJUSTED	◇	---	DETECTABLE WARNING SURFACE TILE	---	---	PAVEMENT PATCH	---
◇	HYDRANT	◇	---		---	---	PAVEMENT REPAIR FABRIC	---

LOCATIONS APPROVED UNDERGROUND STRUCTURES

SIGNED BY: _____ DATE: _____

SUPV UG STRUCTURES

LOCATION OF UNDERGROUND STRUCTURES AS SHOWN ARE BASED ON THE BEST INFORMATION AVAILABLE BUT NO GUARANTEE IS GIVEN THAT ALL EXISTING UTILITIES ARE SHOWN OR THAT THE GIVEN LOCATIONS ARE EXACT CONFIRMATION OF EXISTENCE AND EXACT LOCATION OF ALL SERVICES MUST BE OBTAINED FROM THE INDIVIDUAL UTILITIES BEFORE PROCEEDING

NO.	REVISIONS	DATE	BY
7			
6			
5			
4			
3			
2			
1			
0	ISSUED FOR TENDER	2025/02/13	MV

wsp

DESIGNED BY: MV
 CHECKED BY: SS
 DRAWN BY: RB
 APPROVED BY: SS

HOR. SCALE: 1:250
 VERTICAL: 1:10

RELEASED FOR CONSTRUCTION: 2024/12/06

WSP Canada Inc.
 1600 Buffalo Place
 Winnipeg, MB R3T 6B8
 t. 204.477.6650
 f. 204.474.2864
 www.wsp.com

ENGINEER'S SEAL
 CONSULTANT ACAD DWG. NO.
 CA0043377.5914-02

THE CITY OF WINNIPEG
 PUBLIC WORKS DEPARTMENT
 ENGINEERING SERVICES DIVISION

2025 ST. ANNE'S ROAD PAVEMENT RENEWALS
 MAJOR REHABILITATION

ST. ANNE'S ROAD
 FERMOR AVE TO ST. MARY'S RD
 STA. 2+50 TO STA. 3+85

CITY DRAWING NUMBER: P-3591-02
 SHEET: 02 OF 13
 TENDER NO.: 34-2025