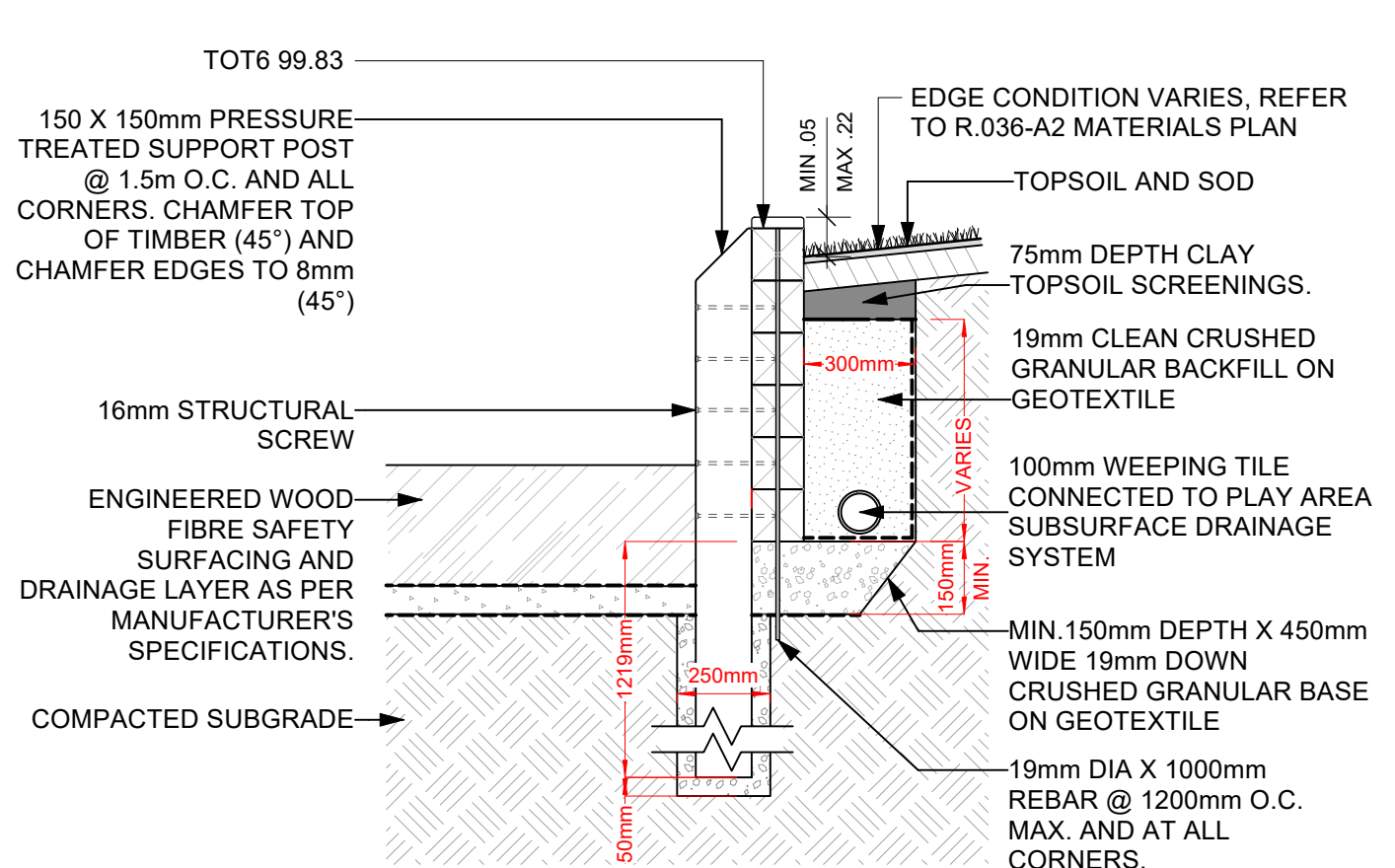
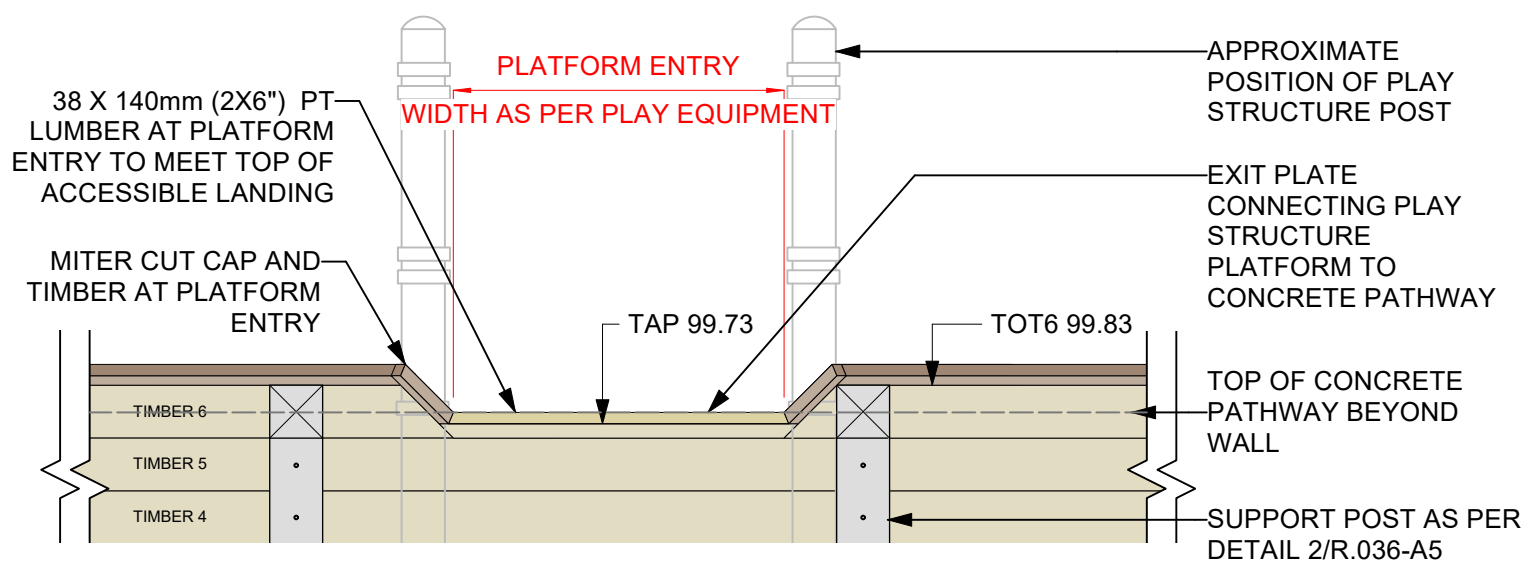


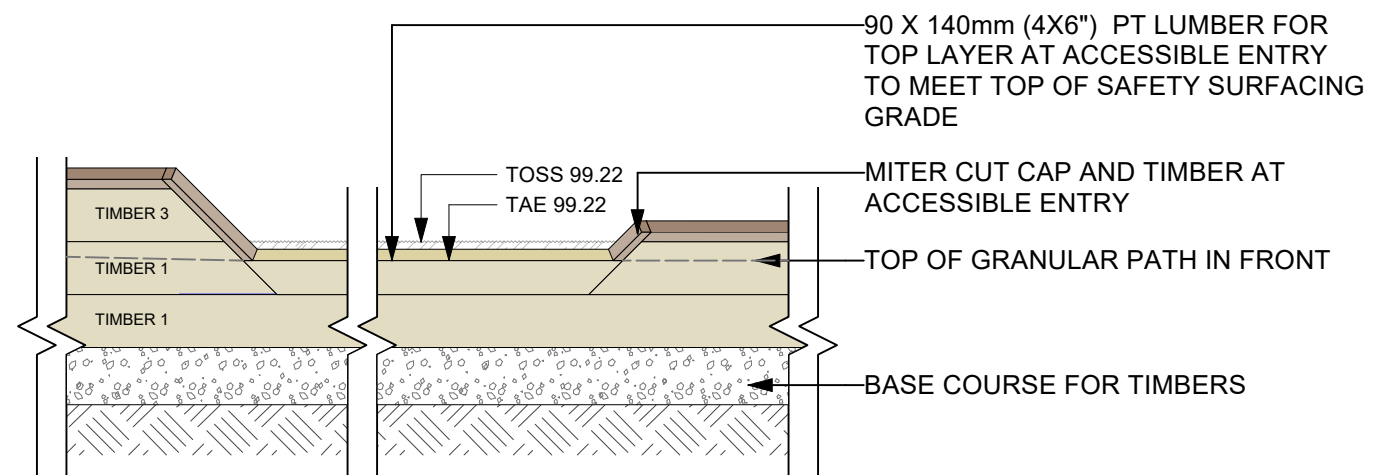
**1 ACCESSIBLE ELEVATED PLATFORM ENTRY - SECTION**  
Scale: 1:20



**2 REINFORCED TIMBER RETAINING WALL**  
Scale: 1:20




**3 ACCESSIBLE ELEVATED PLATFORM ENTRY - ELEVATION**  
Scale: 1:20



**4 ACCESSIBLE ENTRY - ELEVATION**  
Scale: 1:20

CONTRACTOR TO CONFIRM ALL DIMENSIONS AND REPORT ANY DISCREPANCIES TO CONTRACT ADMINISTRATOR PRIOR TO CONSTRUCTION. LOCATION OF UNDERGROUND STRUCTURES AS SHOWN ARE BASED ON THE BEST INFORMATION AVAILABLE BUT NO GUARANTEE IS GIVEN THAT ALL EXISTING UTILITIES ARE SHOWN OR THAT THE GIVEN LOCATIONS ARE EXACT. CONFIRMATION OF EXISTENCE AND EXACT LOCATION OF ALL SERVICES MUST BE OBTAINED FROM THE INDIVIDUAL UTILITIES BEFORE PROCEEDING WITH CONSTRUCTION.

 <p>THE CITY OF WINNIPEG Planning, Property and Development Department Planning and Land Use Division Unit 15 - 30 Fort Street, Winnipeg, MB, (R3C 4X5)</p>	DESIGNED BY	CHECKED BY	MANAGER, PARK AND OPEN SPACES	DATE	DRAWING TITLE <b>RIDGEWOOD WEST SOUTH PLAYGROUND</b>	DRAWING NO. <b>R.036-A5</b>
	DRAWN BY <b>MK</b>	APPROVED BY				
	HORIZ. SCALE <b>AS NOTED</b>					
	VERT. SCALE <b>AS NOTED</b>					
	DATE <b>APRIL 2025</b>		MANAGER, PLANNING AND LAND USE DIVISION	DATE	SITE ADDRESS <b>255 Couture Cres.</b>	BID OPPORTUNITY NO. <b>384-2025</b>