

Smith Carter

Architects
Engineers
Interior Designers
Landscape Architects

Consultant

MHRC - WAVERLEY WEST PHASE 1B FOUNTAIN

TENDER DRAWINGS

JUNE 6, 2008

Project Title
MHRC-WAVERLEY WEST
PHASE 1B

SHEETS:

LANDSCAPE:

- L-0101 - SITE PLAN
- L-0102 - DETAIL PLAN
- L-0103 - COLUMN/PERGOLA PLAN
- L-0104 - GRADING PLAN
- L-0501 - DETAILS
- L-0502 - PERGOLA DETAILS
- L-0503 - BOWL DETAILS & ELEVATION

ELECTRICAL:

- ES101 - ELECTRICAL SITE PLAN
- ELP101 - ELECTRICAL PUMPHOUSE PLAN

MECHANICAL:

- MG101 - MECHANICAL SITE PLAN
- M-401 - BOWL PLUMBING PLAN
PUMPHOUSE HVAC PLAN
- M-402 - PUMPHOUSE PLUMBING PLAN

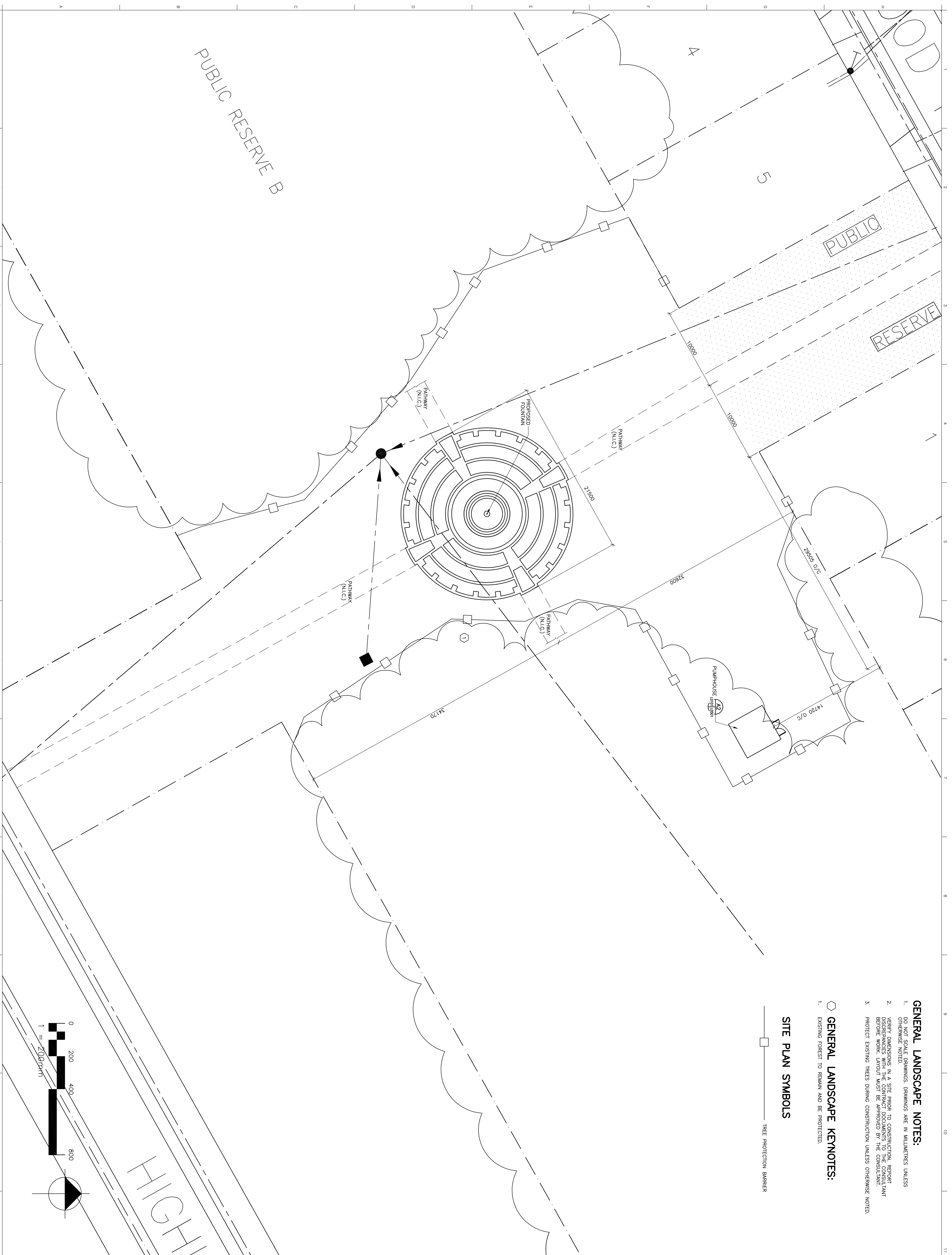
TITLE SHEET

Designed By	Included
Drawn By	Included
LP	Included
Checked By	Included
EN	Included
Approved By	Included
EN	Included

Scales	N/A
Date	06/04/2008
Sheet Number	G-0100

Sheet Order	
Project Number	26005.25

Smith Carter

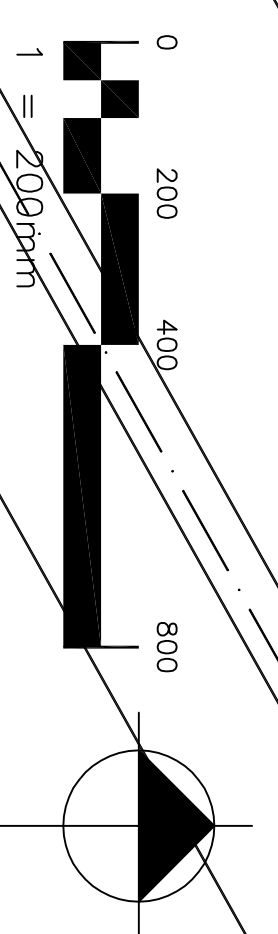


- GENERAL LANDSCAPE NOTES:**
- DO NOT SCALE DRAWINGS. DRAWINGS ARE IN MILLIMETRES UNLESS OTHERWISE NOTED.
 - VERIFY DIMENSIONS IN A SITE PRIOR TO CONSTRUCTION. REPORT DISCREPANCIES WITH THE CONTRACT DOCUMENTS TO THE CONSULTANT BEFORE WORK. LAYOUT MUST BE APPROVED BY THE CONSULTANT.
 - PROTECT EXISTING TREES DURING CONSTRUCTION UNLESS OTHERWISE NOTED.

- GENERAL LANDSCAPE KEYNOTES:**
- EXISTING FOREST TO REMAIN AND BE PROTECTED.

SITE PLAN SYMBOLS

□ TREE PROTECTION BARRIER



Smith Carter Architects
 1400 Buffalo Place
 Winnipeg, Manitoba
 Canada, R3T 0S9
 Tel: (204) 477-2380
 Fax: (204) 477-4346

Engineers
 Landscape Designers
 Landscape Architects

Project Title
 MHRC-WAVERLEY WEST
 PHASE 1B

1	ISSUED FOR TENDER	06/06/2008	LP	EN
No.	Description	Date (m/d/y)	Drawn	Checked
Revisions/Assurance (read up)				

Designed By	EN	Included
Drawn By	OPT	Included
Checked By		Included
Approved By	EN	Included

Sheet Title
SITE PLAN

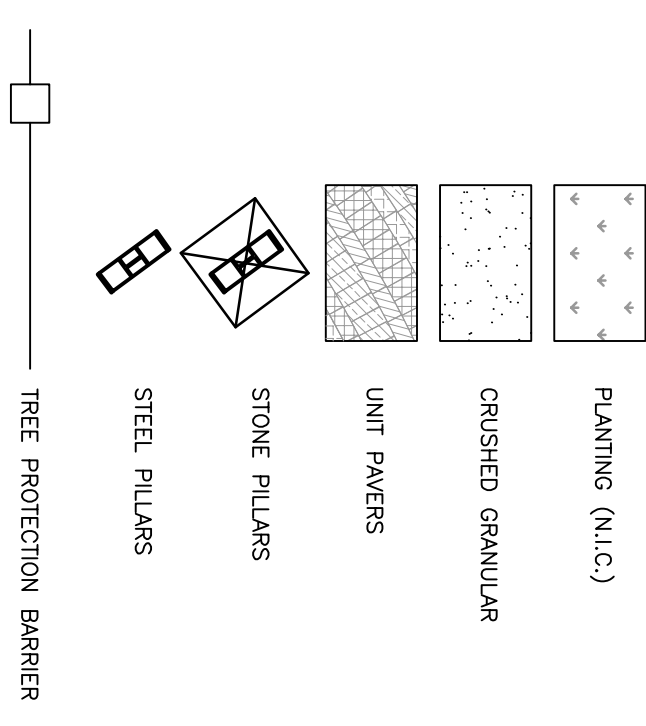
Scales 1:200
 Date 03/18/2008

Sheet Number
L-0101

Smith Carter
 Project Number 26005.25

- GENERAL LANDSCAPE NOTES:**
- DO NOT SCALE DRAWINGS. DIMENSIONS ARE IN MILLIMETERS UNLESS OTHERWISE NOTED.
 - VERIFY DIMENSIONS IN A SITE PRIOR TO CONSTRUCTION. REPORT ANY DISCREPANCIES TO THE CONSULTANT BEFORE WORK. LAYOUT MUST BE APPROVED BY THE CONSULTANT.
 - PROTECT EXISTING TREES DURING CONSTRUCTION UNLESS OTHERWISE NOTED.

DETAIL PLAN SYMBOLS

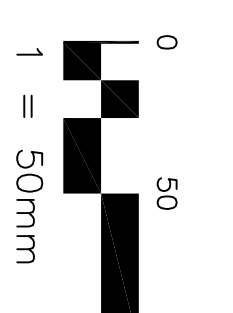
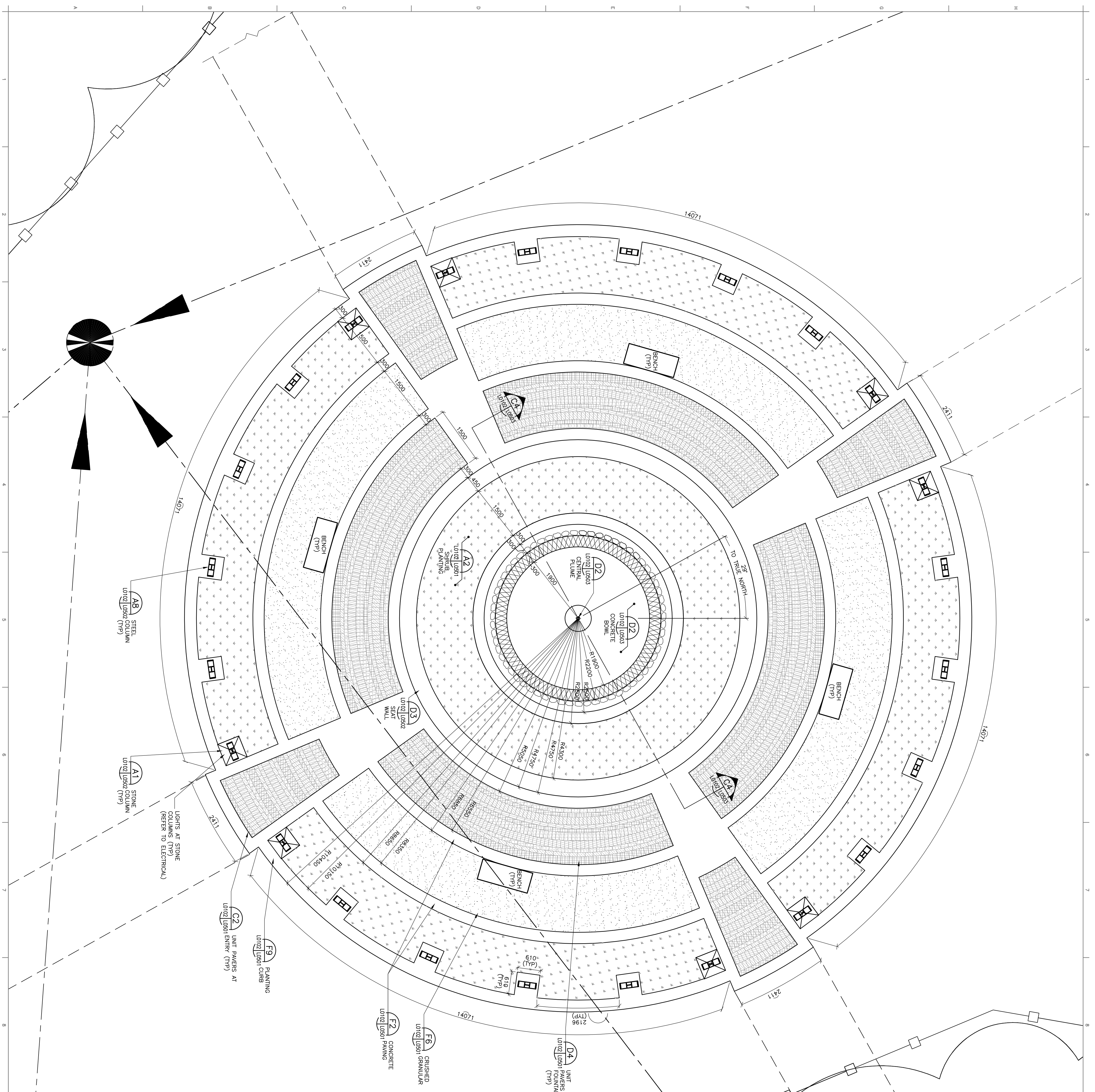


- GENERAL LANDSCAPE KEYNOTES:**
- EXISTING FORESTS TO REMAIN AND BE PROTECTED.

MHRC-WAVERLEY WEST
PHASE 1B

Smith Carter
Architects
Landscape Architects

1400 Buffalo Place
Winnipeg, Manitoba
Canada, R3T 0B9
Tel: (204) 477-2380
Fax: (204) 477-4346



DETAIL PLAN

Designed By	EN	Included
Drawn By	OPT	Included
Checked By		Included
Approved By	EN	Included

1	ISSUED FOR TENDER	06/06/2008	LP	EN
No.	Description	Date (m/d/y)	Drawn	Checked
Revisions/Assume (read up)				

Scale	1:50
Date	03/18/2008
Sheet Number	L-0102

Project Number
26005.25

Smith Carter

- GENERAL LANDSCAPE NOTES:**
1. DO NOT SCALE DRAWINGS. DIMENSIONS ARE IN MILLIMETRES UNLESS OTHERWISE NOTED.
 2. VERIFY DIMENSIONS IN A SITE PRIOR TO CONSTRUCTION. REPORT ANY DISCREPANCIES TO THE CONSULTANT BEFORE WORK LAYOUT MUST BE APPROVED BY THE CONSULTANT.
 3. PROTECT EXISTING TREES DURING CONSTRUCTION UNLESS OTHERWISE NOTED.

Smith Carter Architects
 Smith Carter Landscape Architects
 1600 Buffalo Place
 Winnipeg, Manitoba
 Canada, R3T 6B9
 Tel: (204) 477-2380
 Fax: (204) 477-4246

Consultant
Smith Carter
 Interior Designers
 Landscape Architects

Project Title
 MHRC-WAVERLEY WEST
 PHASE 1B

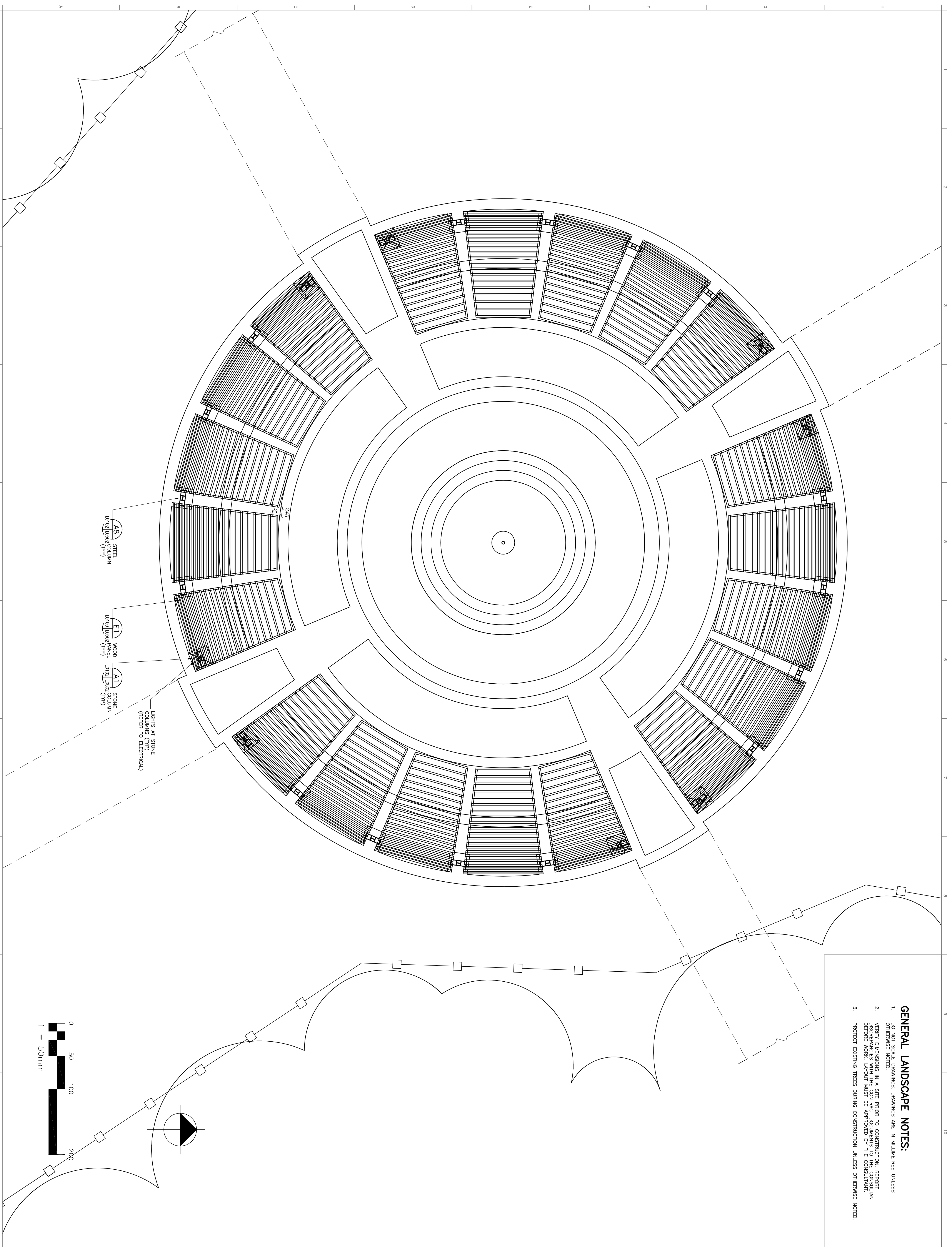
1	ISSUED FOR TENDER	06/06/2008	LP	EN
No.	Description	Date (m/d/y)	Drawn	Checked
Revisions/Issuance (next up)				

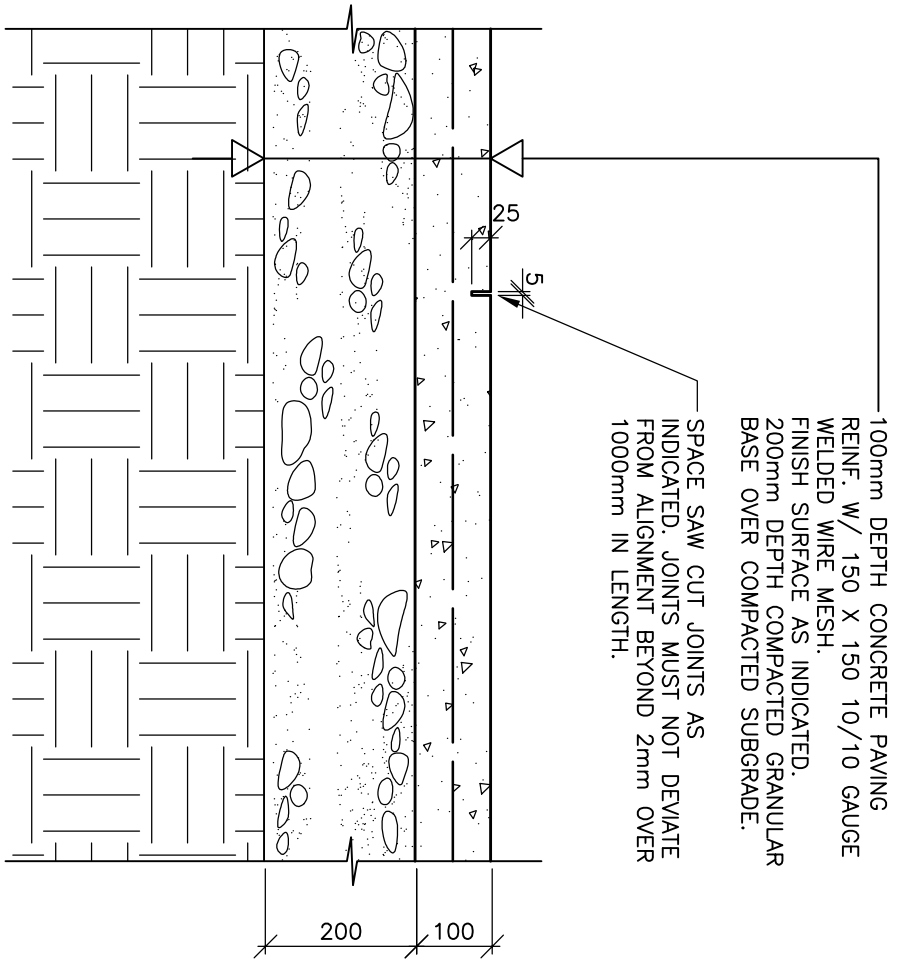
Designed By	EN	Included
Drawn By	DPT	Included
Checked By		Included
Approved By	EN	Included

Sheet Title
COLUMN / PERGOLA PLAN

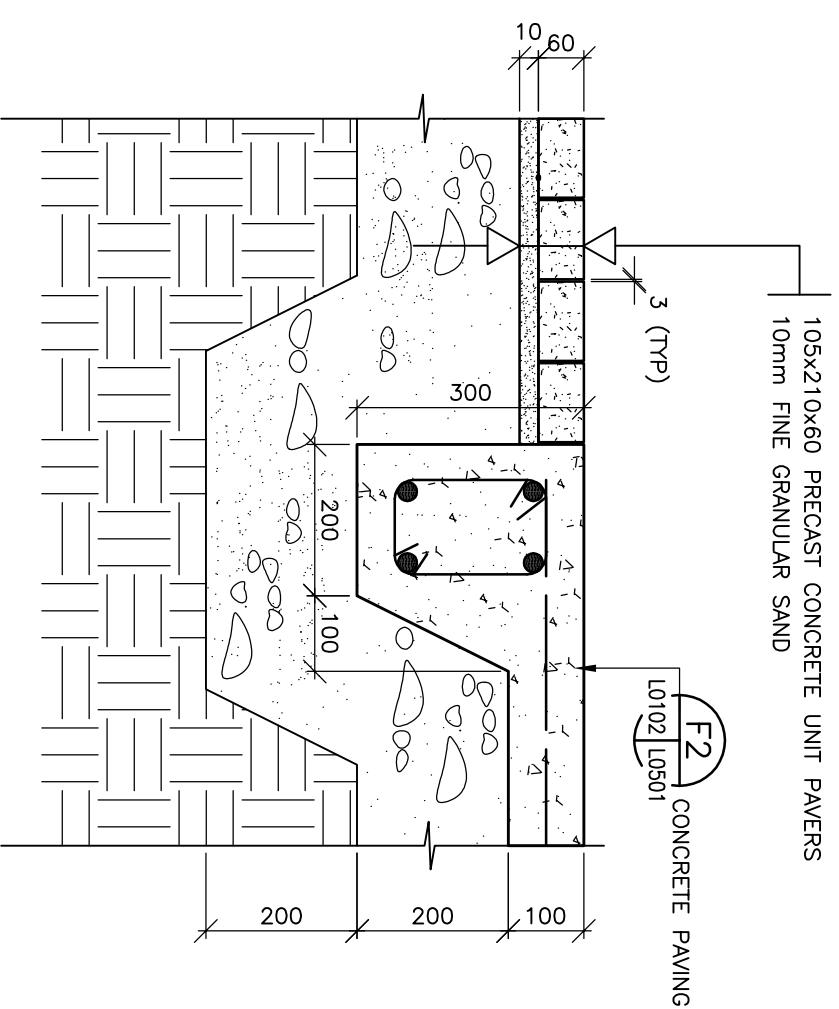
Scales 1:50
 Date 03/18/2008
 Sheet Number
L-0103

Smith Carter
 Project Number 26005.25

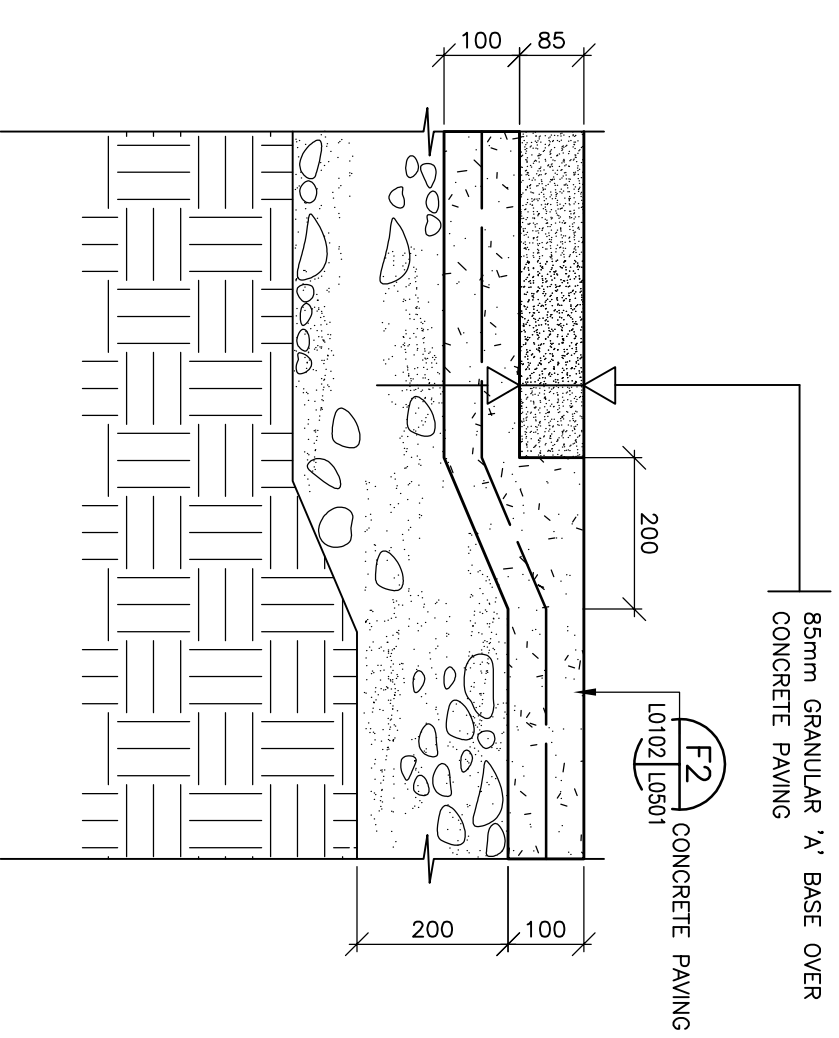




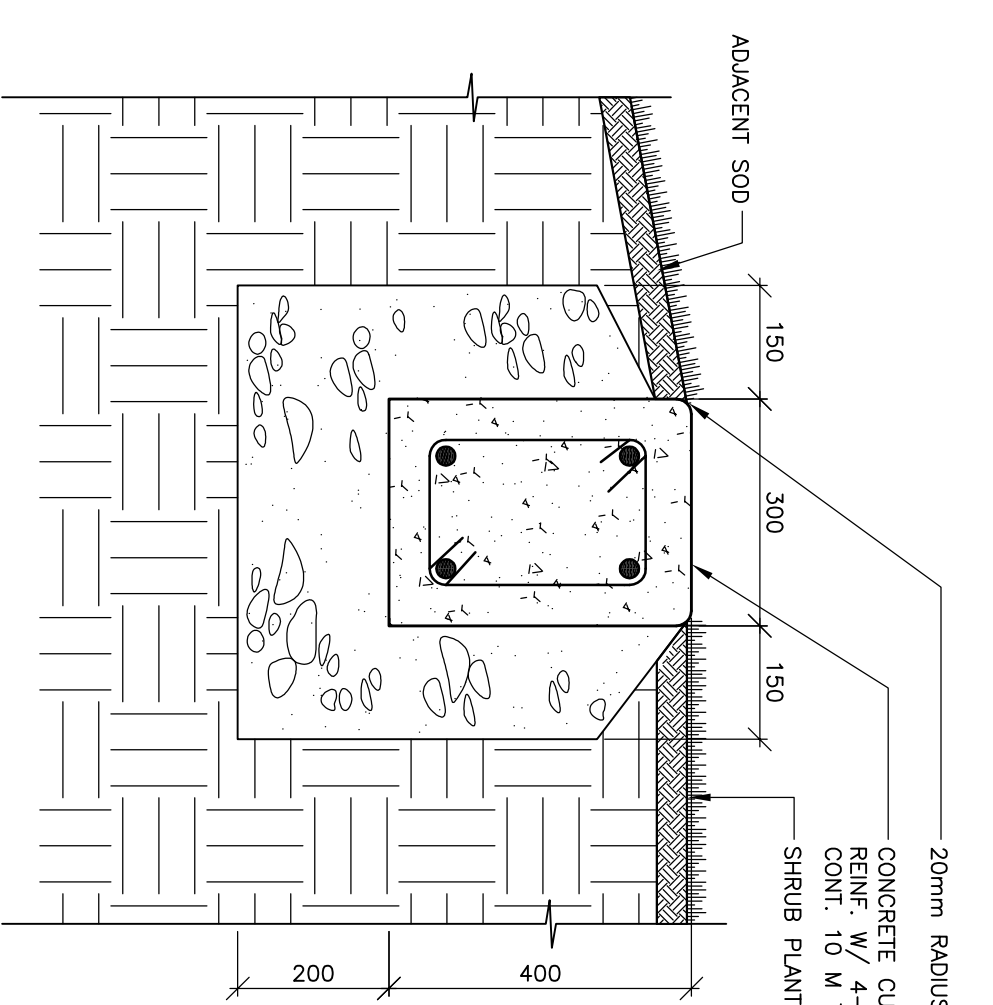
F2 CONCRETE PAVING
 L0102 L0501 1:10



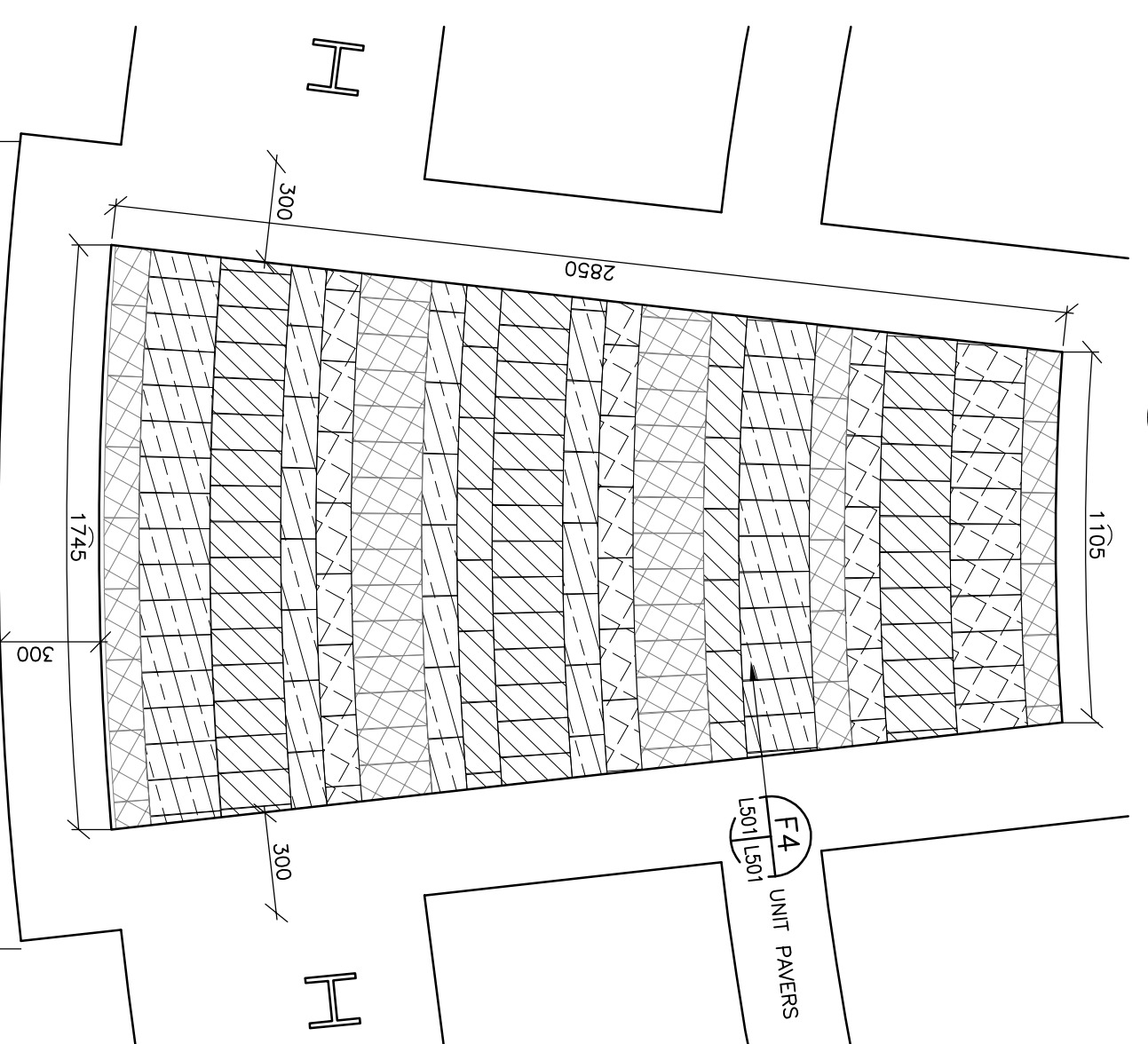
F4 UNIT PAVERS
 L0501 L0501 1:10



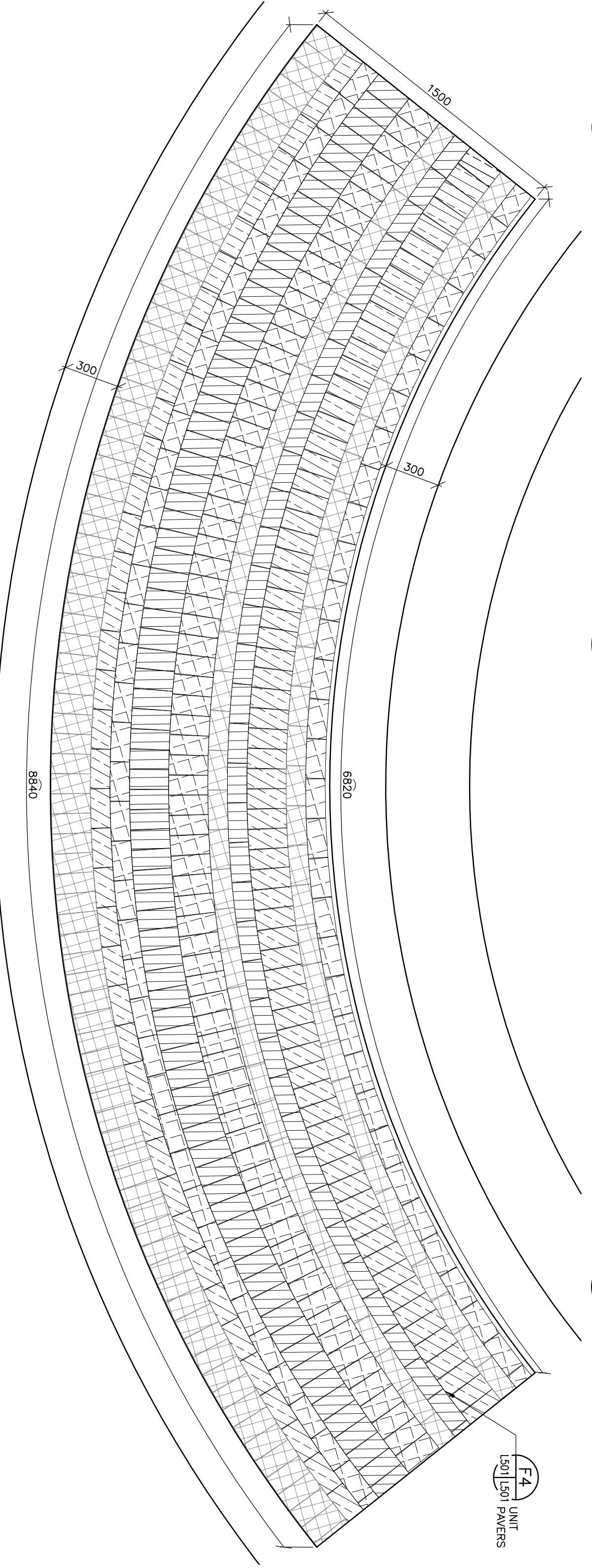
F6 CRUSHED GRANULAR
 L0102 L0501 1:10



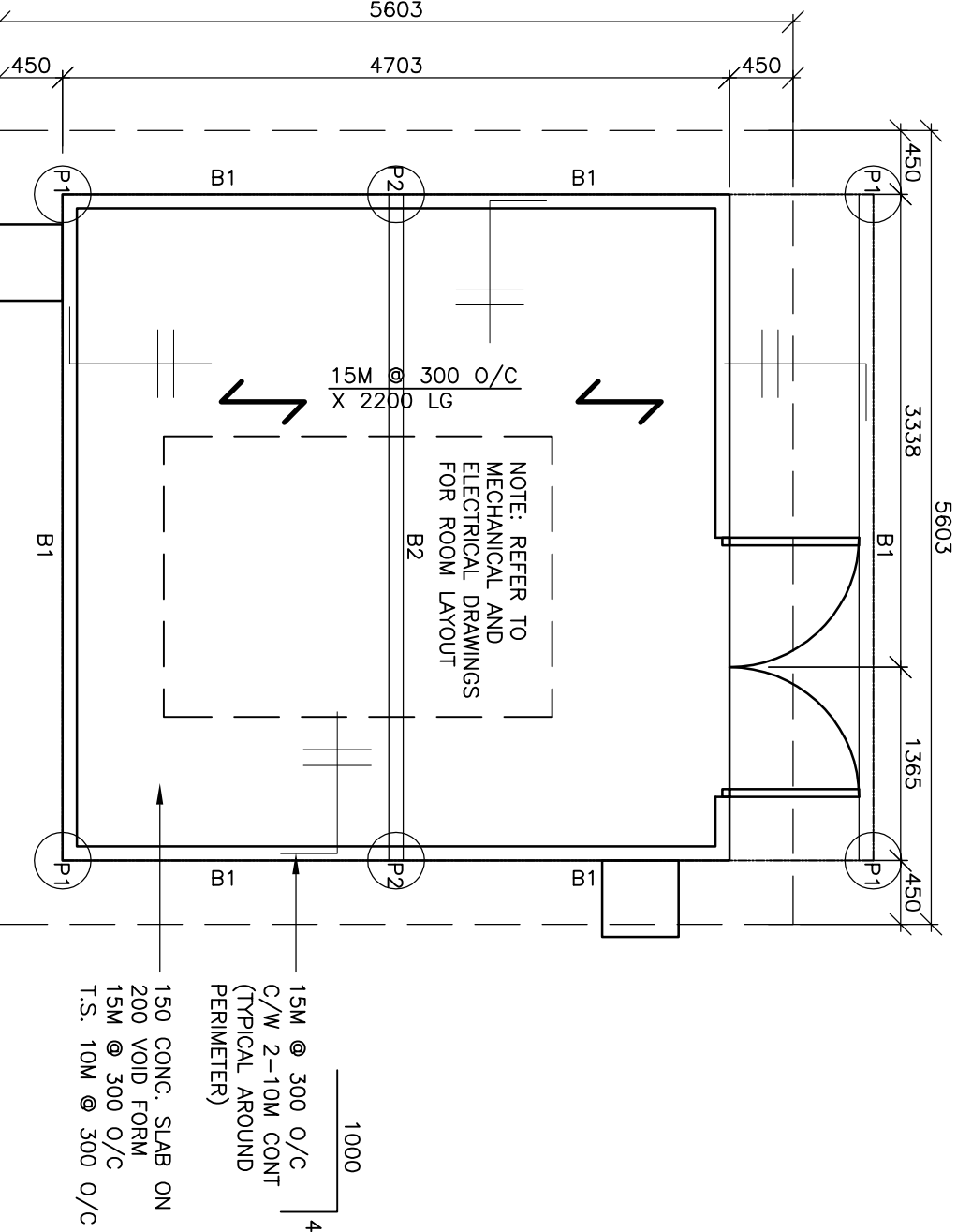
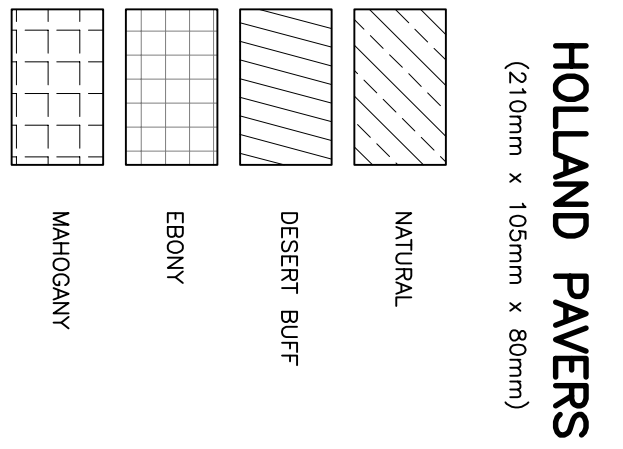
F9 PLANTING CURB
 L0102 L0501 1:10



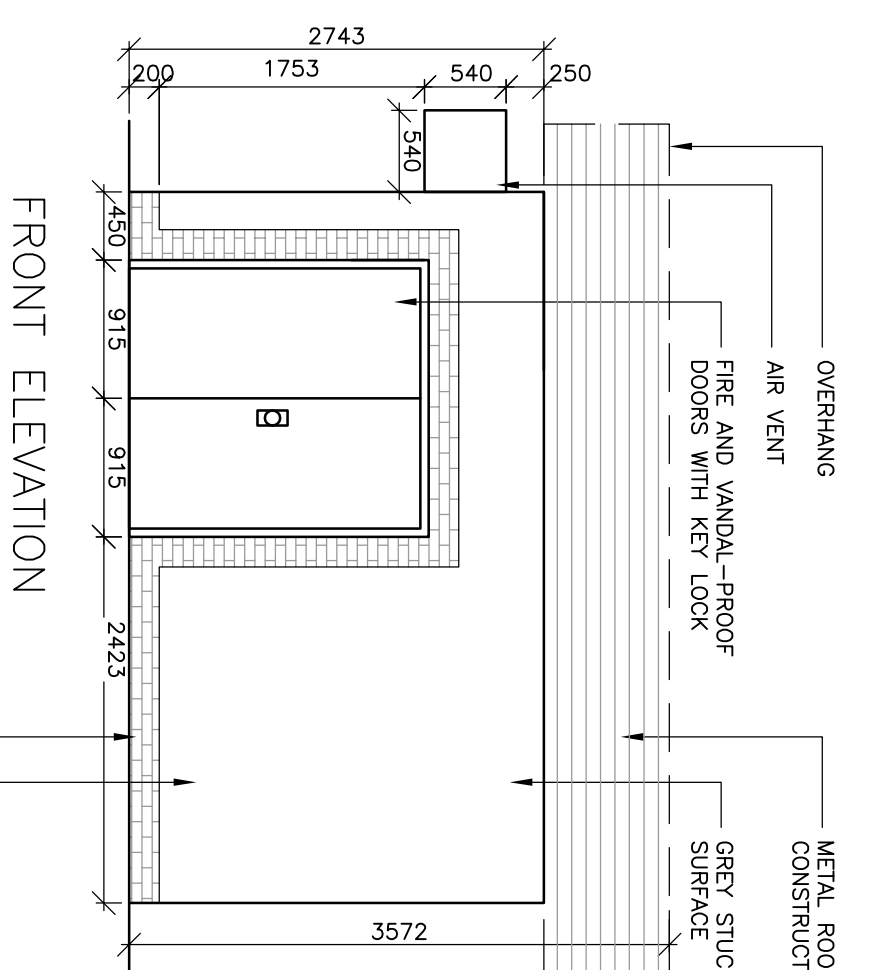
C2 UNIT PAVING AT ENTRY (TYP)
 L0102 L0501 1:20



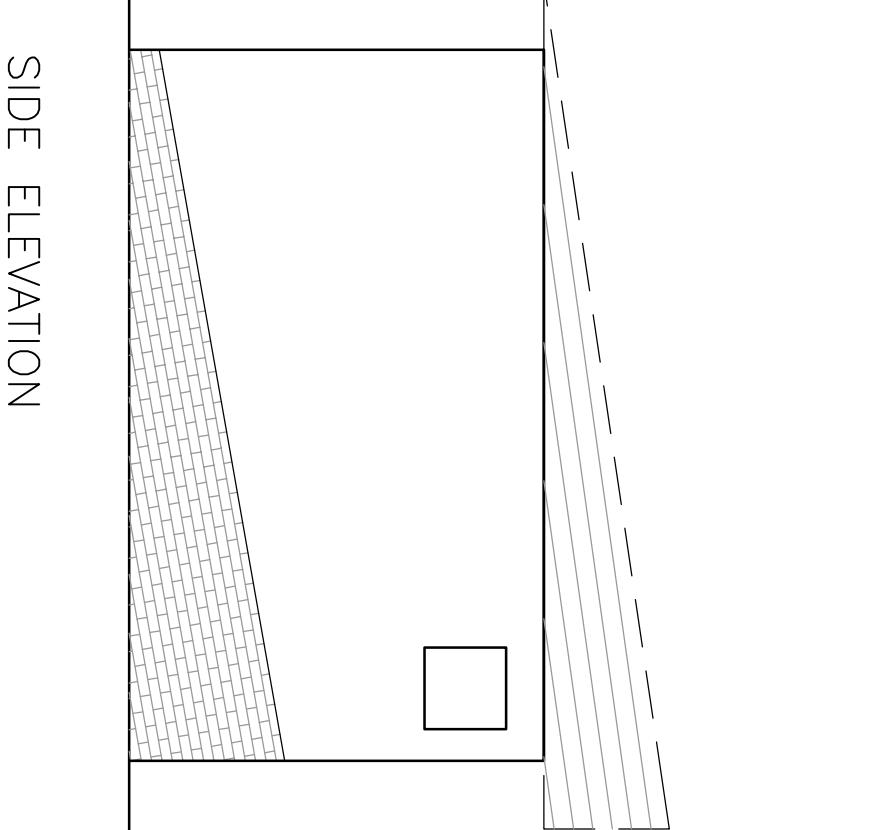
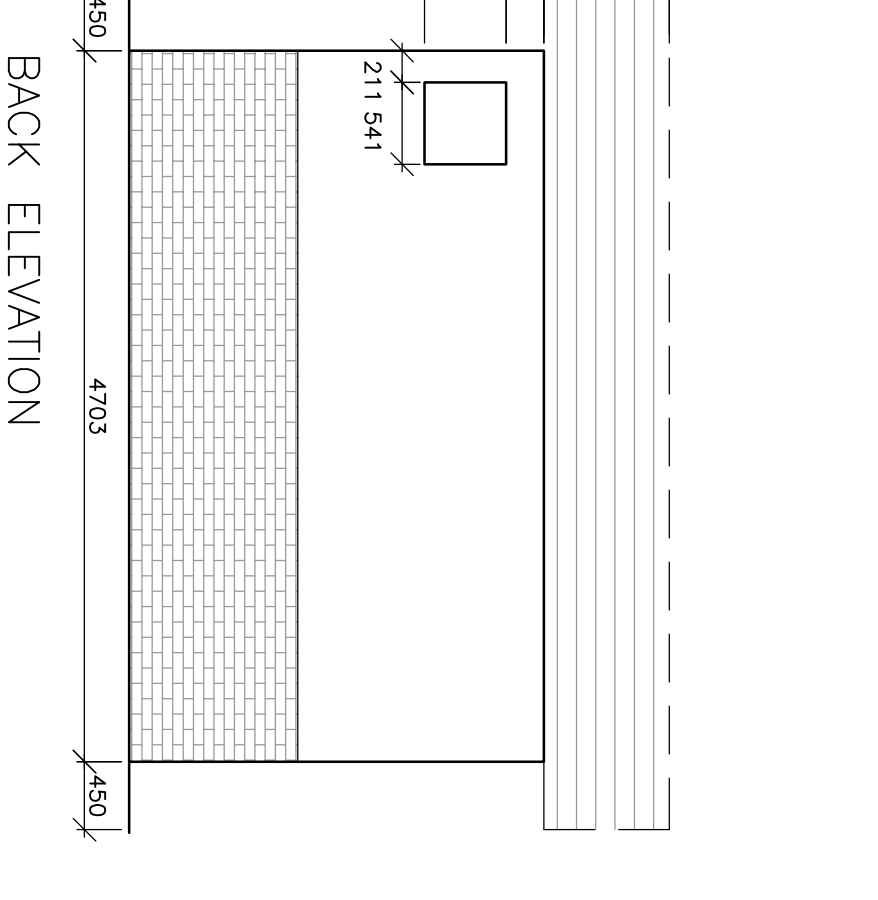
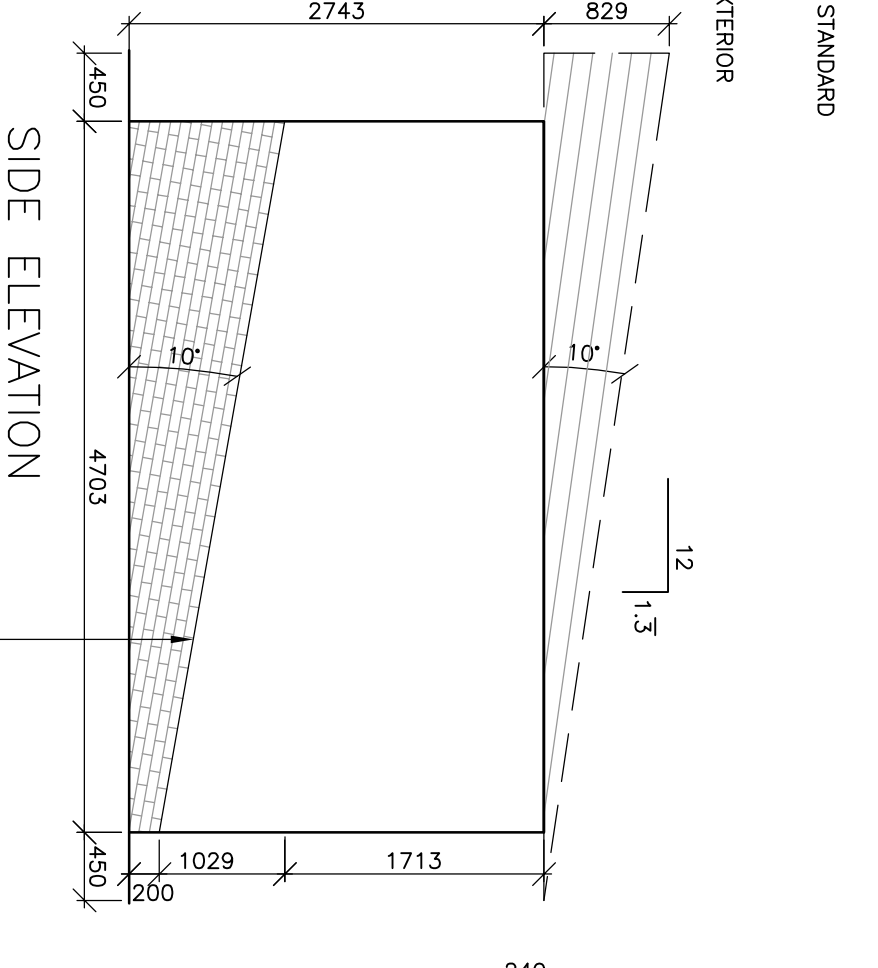
D4 UNIT PAVERS AT FOUNTAIN (TYP)
 L0102 L0501 1:20



A2 PUMPHOUSE - PLAN
 L0101 L0501 1:50



A4 PUMPHOUSE - ELEVATIONS
 L0102 L0501 1:50



Smith Carter
 Architects
 1400 Buffalo Place
 Winnipeg, Manitoba
 Canada, R3T 0S9
 Tel: (204) 477-2390
 Fax: (204) 477-4346

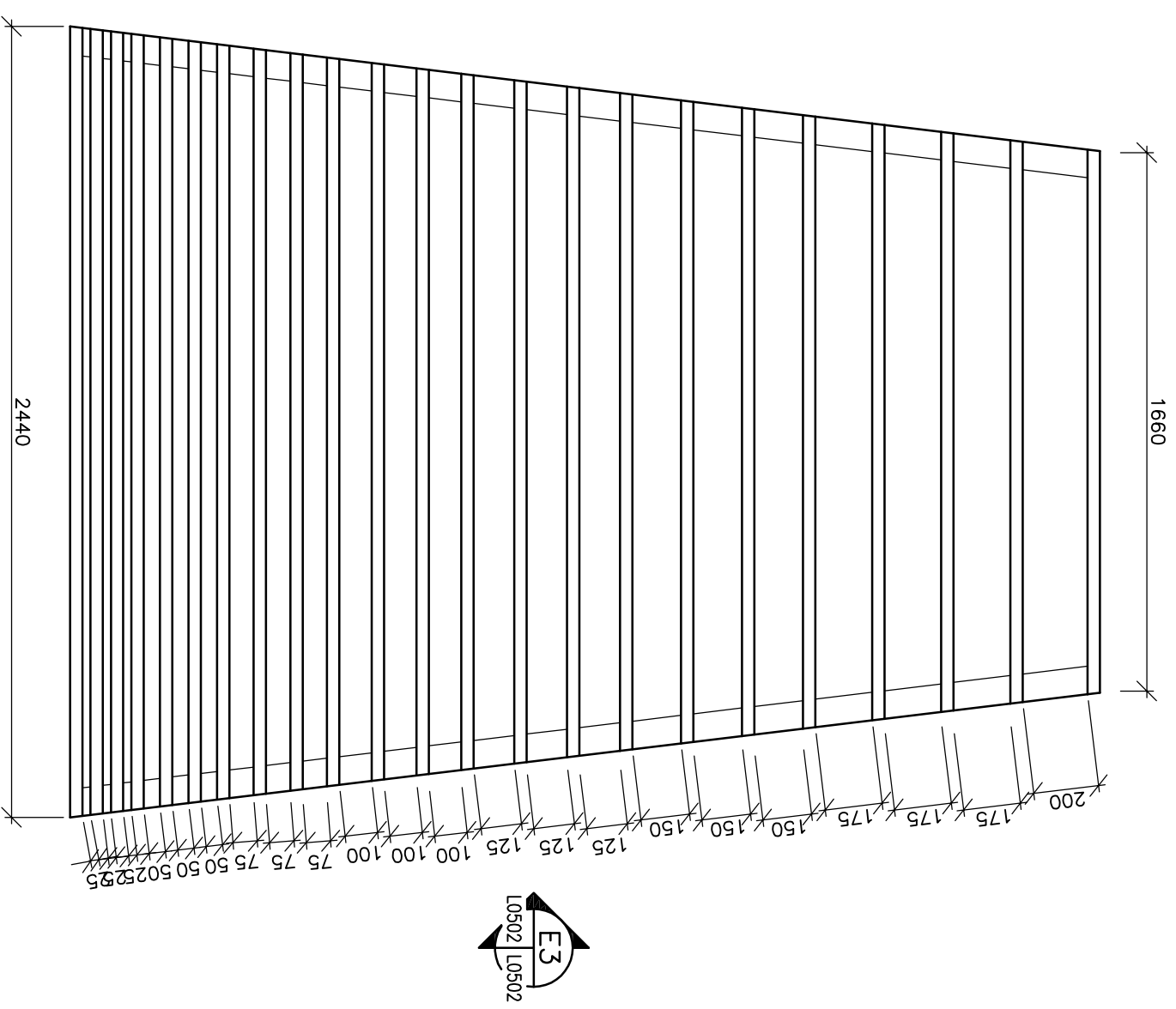
Project Title
**MHRC-WAVERLEY WEST
 PHASE 1B**

1	ISSUED FOR TENDER	06/06/2008	LP	EN
No.	Description	Date (m/d/y)	Drawn	Checked
Revisions/Assume (read up)				
Designed By	EN	Included		
Drawn By	BPT	Included		
Checked By		Included		
Approved By	EN	Included		

DETAILS

Scales **AS NOTED**
 Date **02/18/2008**
 Sheet Number
L-0501
 Smith Carter
 Project Number **26005.25**

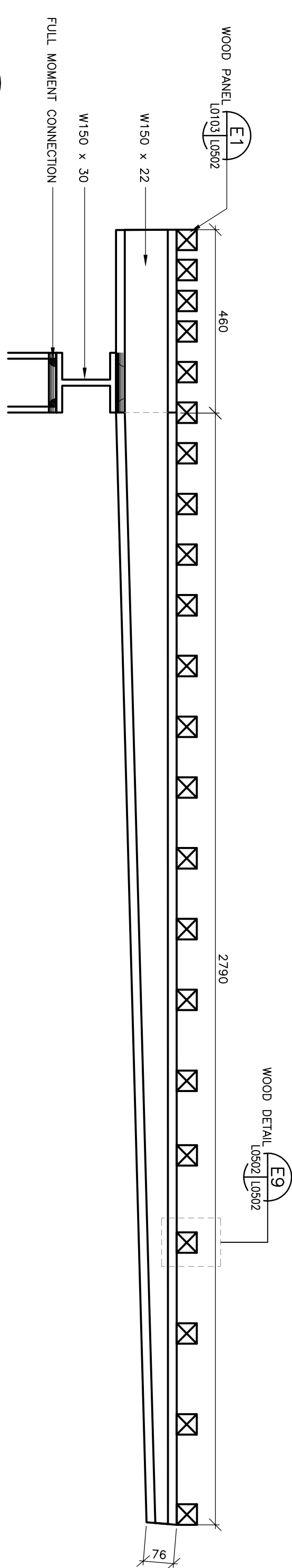
NOTE: ALL WOOD TO BE WESTERN RED CEDAR LUMBER GRADE "A" AND CERTIFIED BY CON LUMBER STANDARDS ACCREDITATION BOARD. LUMBER TO BE FREE FROM WARPING OR DEFECTS AND COMPLY WITH CSA-0141, CANADIAN LUMBER STANDARD FOR STRUCTURAL LUMBER. ALL STEEL ELEVATIONS, SQUARE AND PLUMB. FASTENERS TO BE GALVANIZED TO CSA-0164 STANDARD.



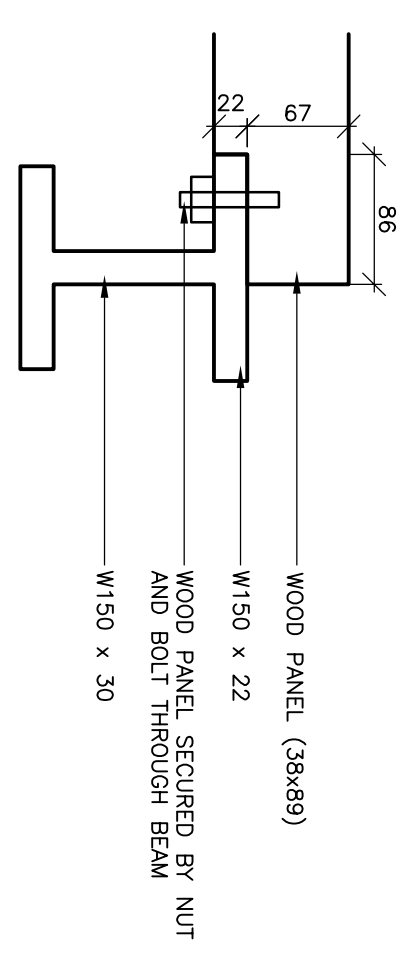
E1 WOOD PANEL
L0103 | L0502 | 1:20



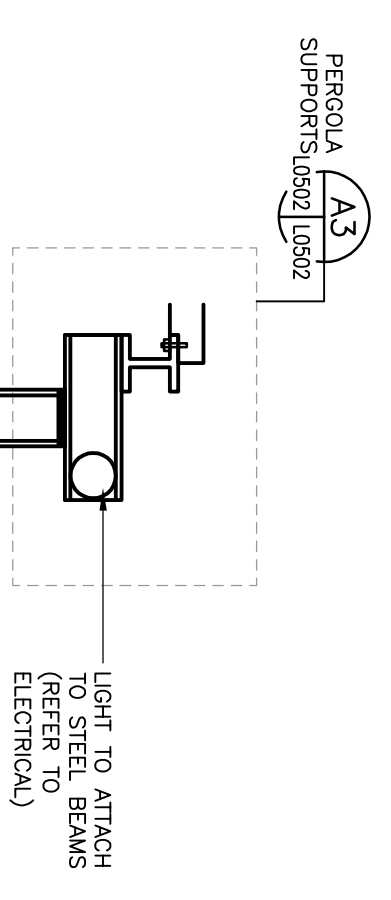
NOTE: ALL EXPOSED STRUCTURAL STEEL TO BE GALVANIZED



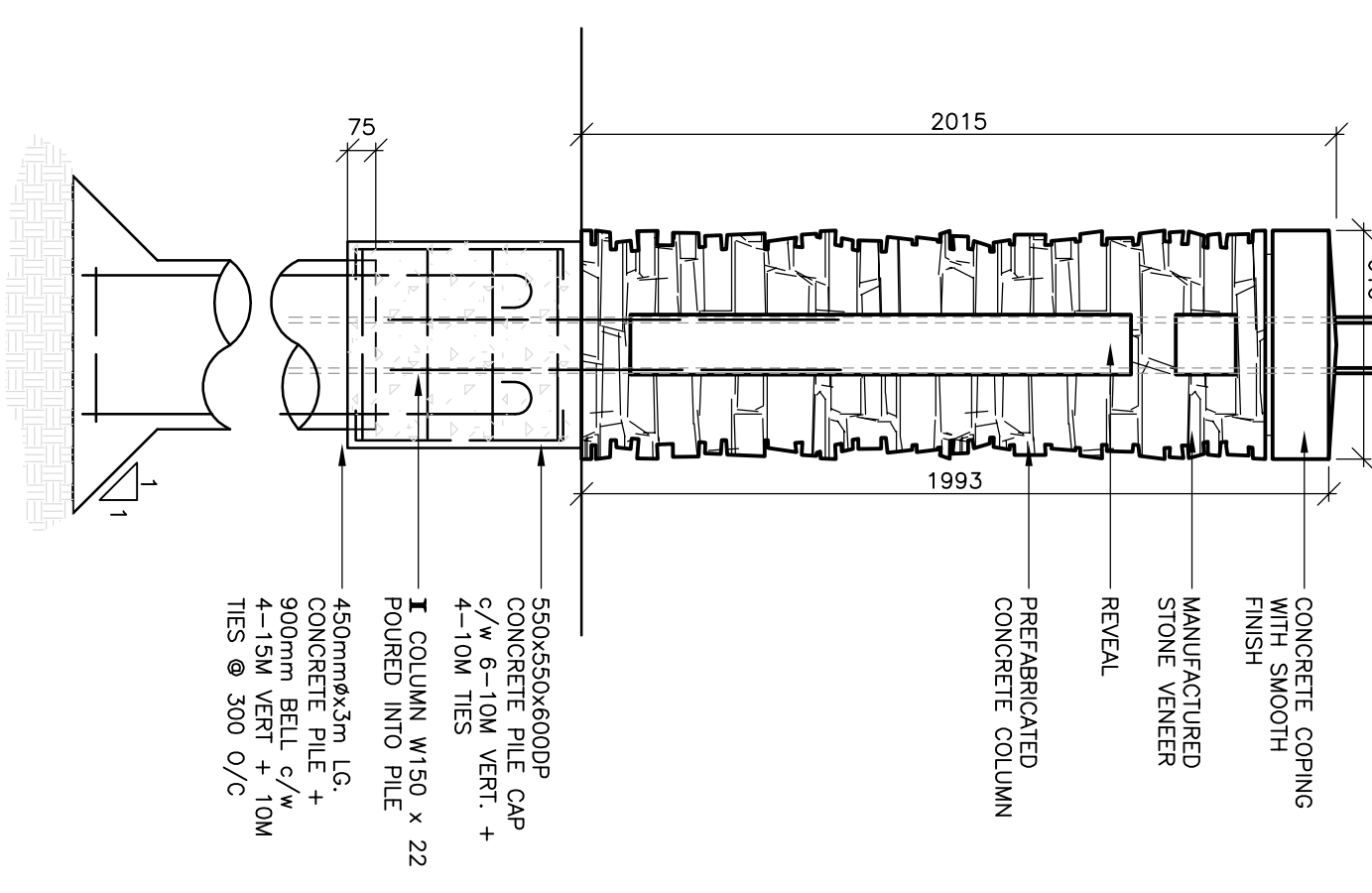
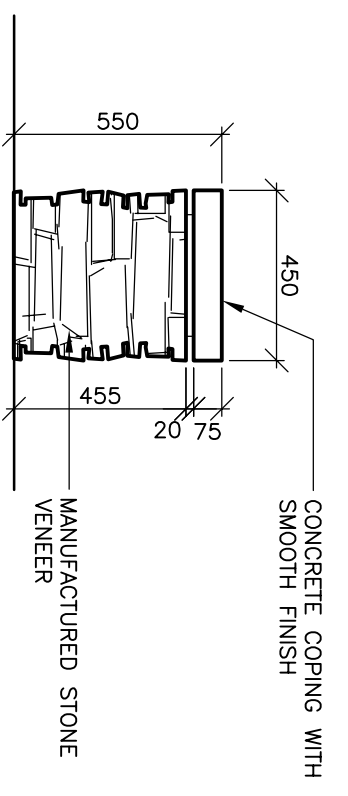
E3 WOOD PANEL - SIDE VIEW
L0502 | L0502 | 1:10



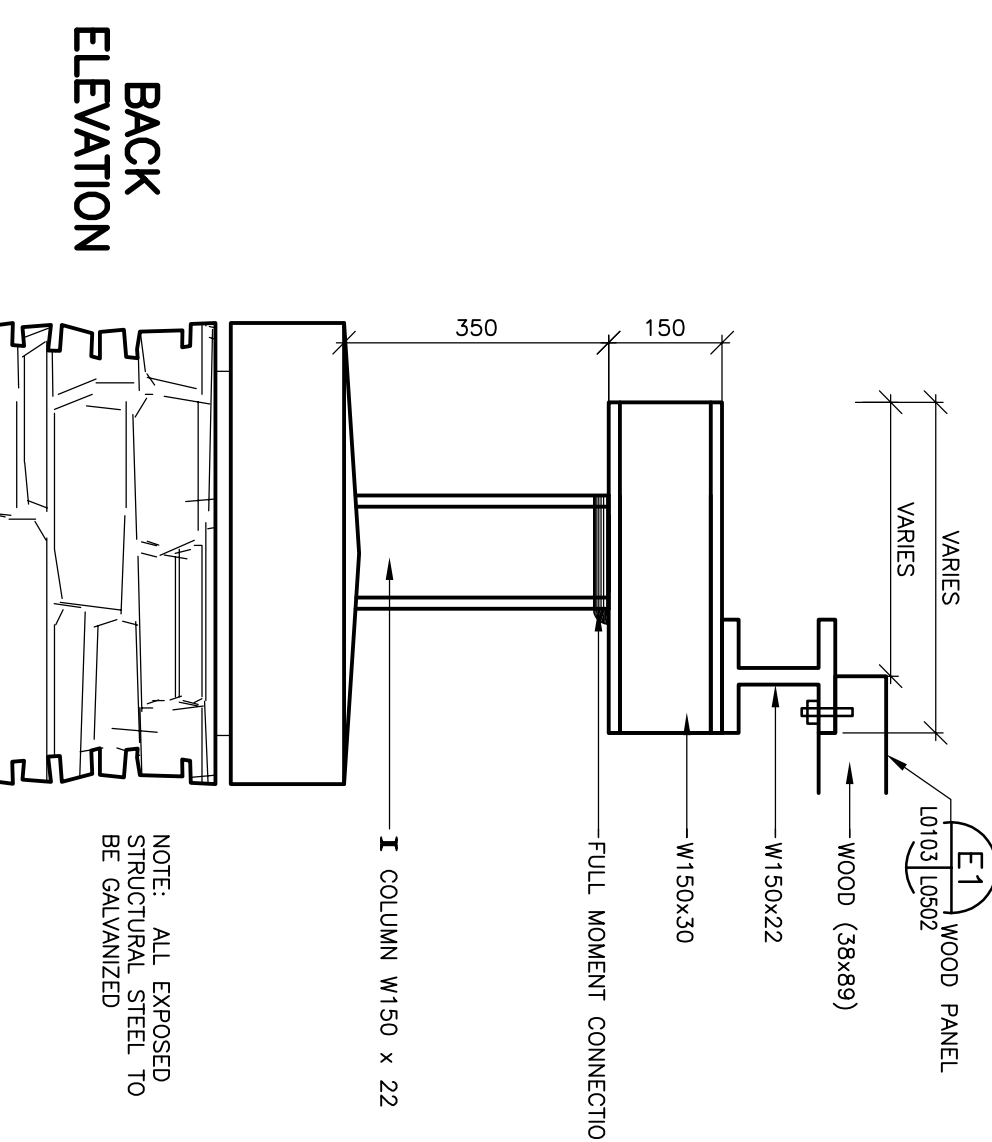
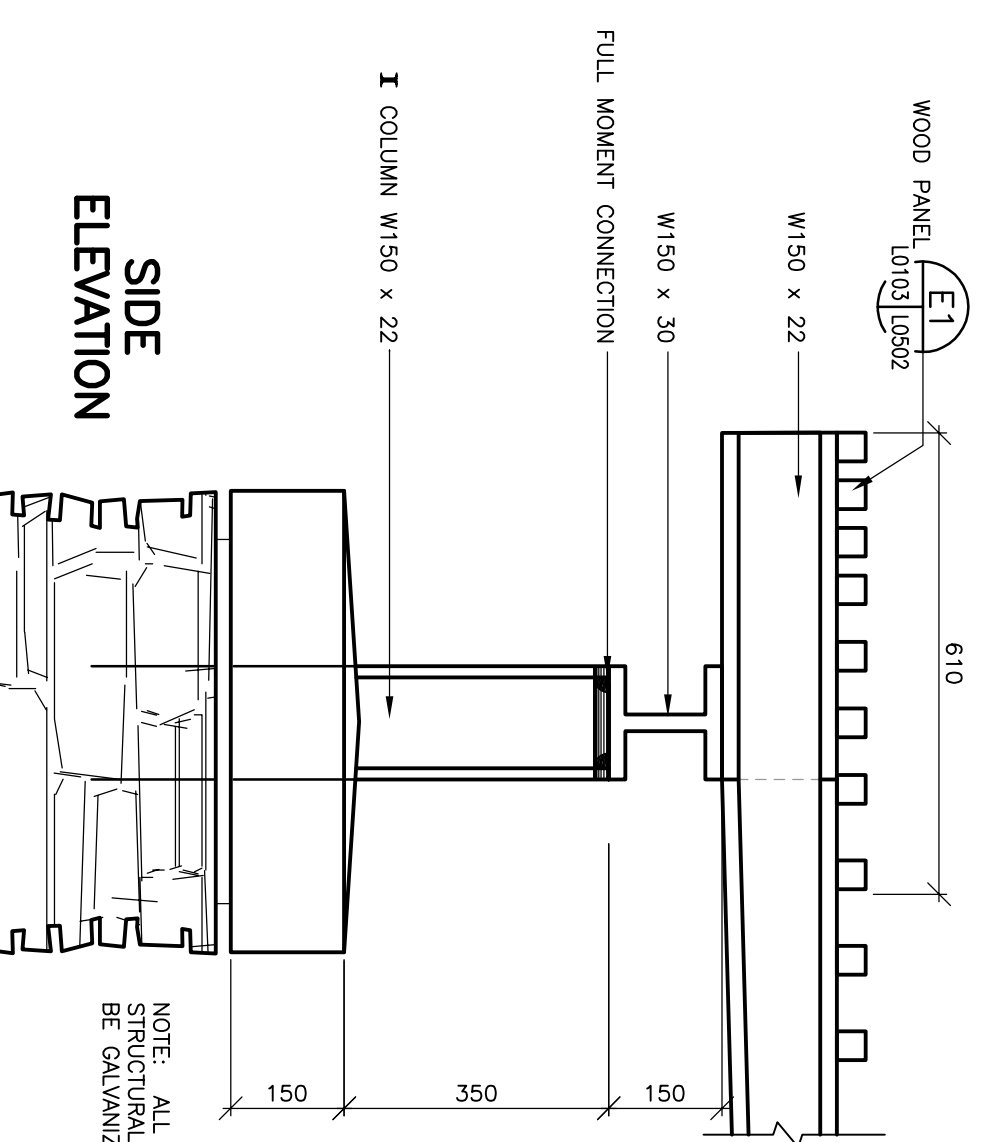
E9 WOOD DETAIL
L0502 | L0502 | 1:5



D3 SEAT WALL
L0107 | L0502 | 1:20

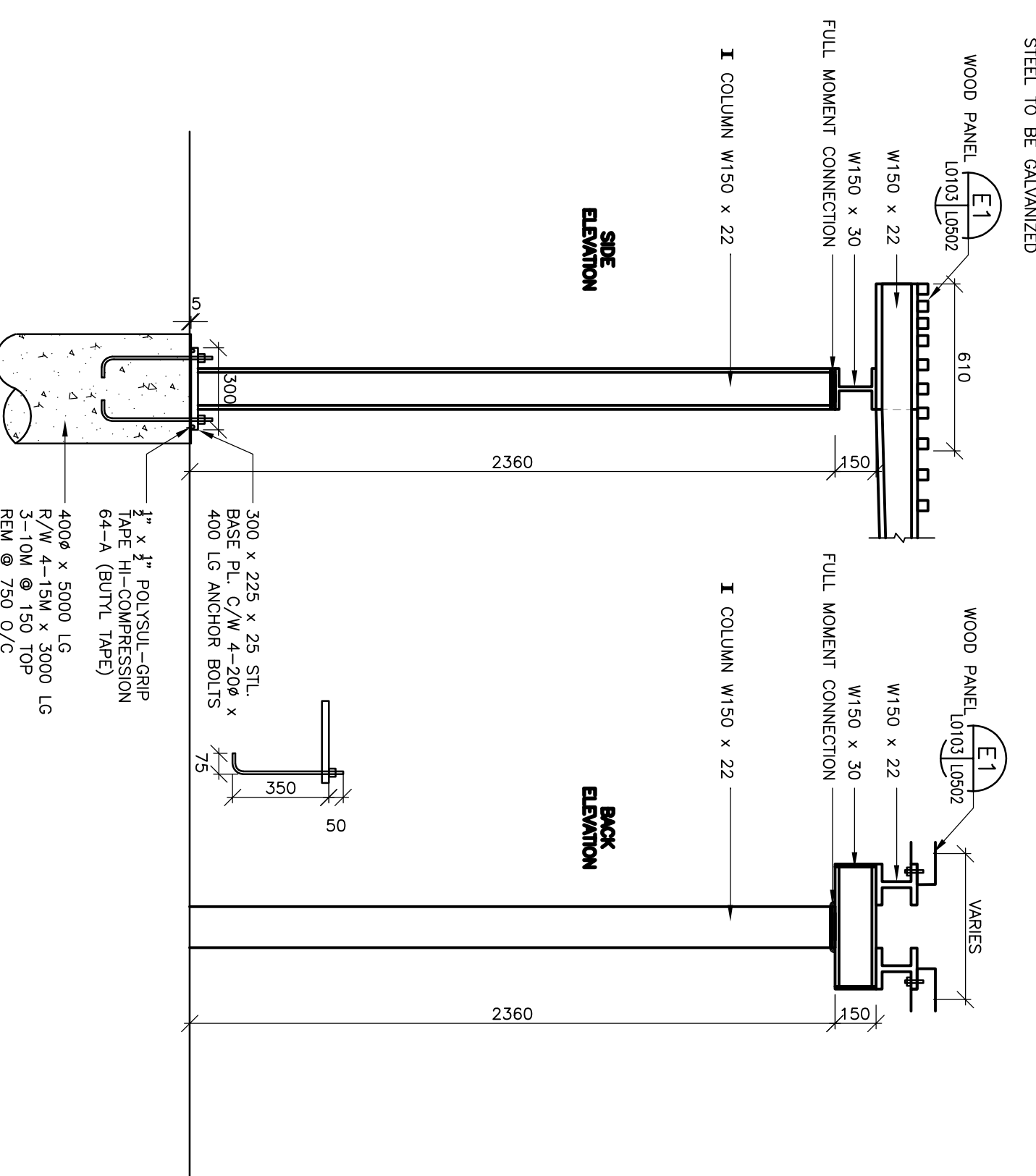


A1 STONE COLUMN
L0103 | L0502 | 1:20



A3 PERGOLA SUPPORTS
L0502 | L0502 | 1:10

A8 STEEL COLUMN (TYP)
L0103 | L0502 | 1:20



Smith Carter Architects
1600 Buffalo Place
Winnipeg, Manitoba
Canada, R3T 0B9
Tel: (204) 477-2380
Fax: (204) 477-4348

Smith Carter
Architects
Interior Designers
Landscape Architects

MHRC-WAVERLEY WEST
PHASE 1B

Designed By	EN	Included
Drawn By	DJT	Included
Checked By		Included
Approved By	EN	Included

PERGOLA DETAILS

Scales AS SHOWN
Date 02/18/2008

L-0502

Smith Carter
Project Number 26005.25