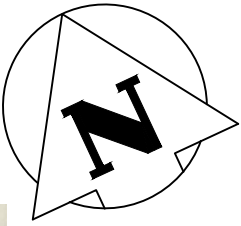
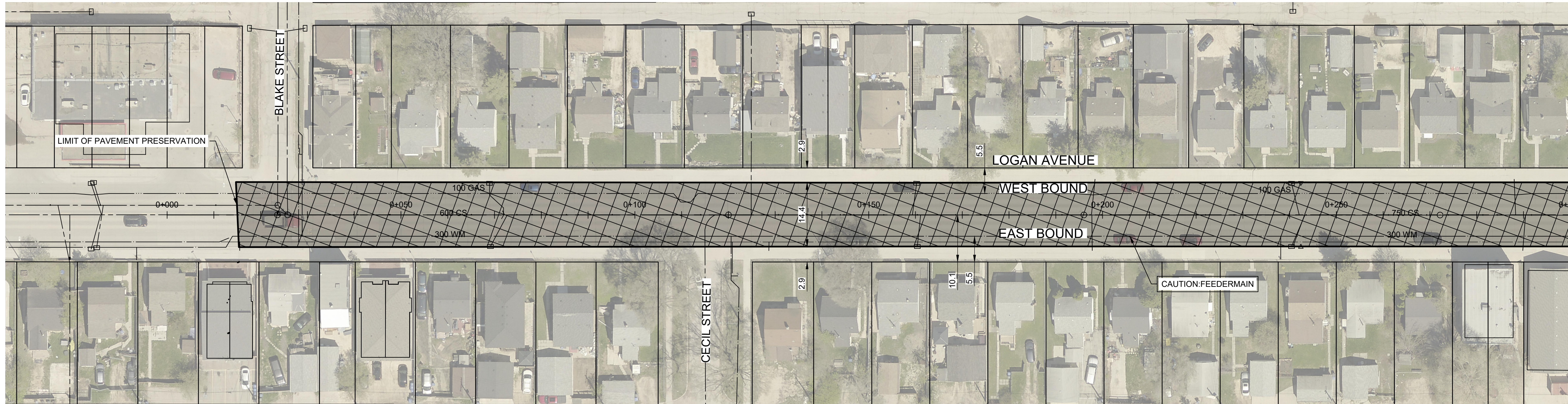
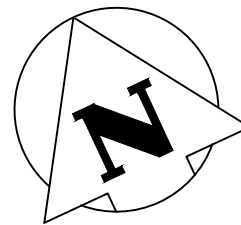
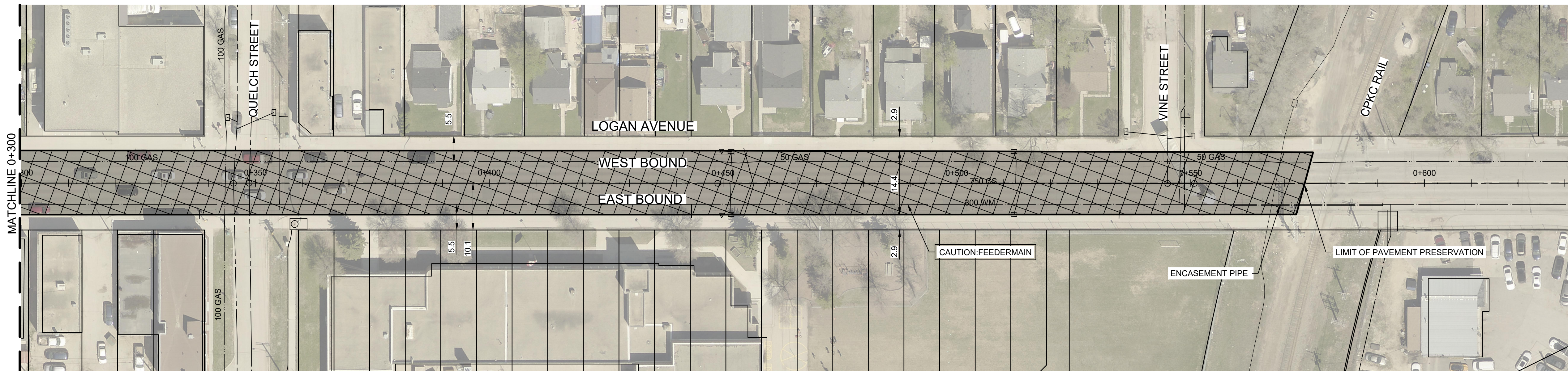


U:\113708666\0300_drawing\0302_sheet_files\02_civil\08666c-103.dwg



MATCHLINE 0+300



MATCHLINE 0+300

NOTES:

1. ALL WORK AND MATERIALS TO BE IN ACCORDANCE WITH THE LATEST REVISION OF THE CITY OF WINNIPEG STANDARD CONSTRUCTION SPECIFICATIONS.
2. CONTRACTOR TO CONFIRM THE LOCATION OF ALL UTILITIES / SERVICES IN THE FIELD PRIOR TO CONSTRUCTION.
3. RENEW CURB, SPLASH STRIP, BULLNOSE AND SIDEWALK AS IDENTIFIED BY CONTRACT ADMINISTRATOR.
4. ALL PRIVATE WALKWAYS TO BE ADJUSTED TO NEW SIDEWALK OR TOP OF CURB ELEVATION, AS REQUIRED.
5. ADJUST MH FRAMES, CB RIMS, CURB INLETS AND VALVES TO NEW GRADES AS REQUIRED.
6. MODIFIED BARRIER CURB TO BE CONSTRUCTED AT ALL INTERSECTION RADI AND BACK LANE RADI.
7. LAMP STANDARDS, HYDRO POLES AND ANCHORS THAT REQUIRE TEMPORARY SUPPORT, REMOVAL OR REPLACEMENT, TO BE DONE SO AT EXPENSE OF THE CONTRACTOR AS NECESSARY.
8. CONTRACTORS TO TAKE PRECAUTIONARY STEPS TO PROTECT EXISTING TREES WITHIN THE LIMITS OF CONSTRUCTION FROM DAMAGE FROM CONSTRUCTION ACTIVITIES AS OUTLINED IN THE SPECIFICATIONS.
9. SLAB RENEWALS, MILLED JOINTS AND PAVEMENT REPAIR FABRIC TO BE FINALIZED IN THE FIELD PRIOR TO CONSTRUCTION. THE REPAIRS IDENTIFIED ON THIS DRAWING ARE FOR TENDER PURPOSE ONLY.
10. JOINTS AND CRACK SEALING TO BE COMPLETED AFTER DIAMOND GRINDING AS PER THE SPECIFICATIONS.
11. JOINT CLEANING FOLLOWING DIAMOND GRINDING, PRIOR TO APPLICATION OF SEALANT SHALL BE COMPLETED VIA PRESSURIZED WATER AS PR CW 3310 - R18 OR BY AN APPROVED VACUUMING OPERATION.
12. DIAMOND GRINDING LIMITS TO BE FINALIZED IN THE FIELD PRIOR TO CONSTRUCTION, AS DIRECTED BY THE CONTRACT ADMINISTRATOR.
13. DESIGNATED CONSTRUCTION ZONE REQUIREMENTS AND GENERAL TRAFFIC CONTROL TO FOLLOW THE LATEST EDITION OF THE CITY OF WINNIPEG MANUAL FOR TEMPORARY TRAFFIC CONTROL.
14. FOR EXISTING RAIL CROSSINGS, TRACK PROTECTION AND FLAGGING TO BE COORDINATED BY THE CONTRACTOR. REQUIREMENTS MAY VARY BY SITE AND RESPECTIVE RAIL COMPANIES.



WARNING

IF POWER EQUIPMENT OR EXPLOSIVES ARE TO BE USED FOR EXCAVATION ON THIS PROJECT THE CONTRACTOR MUST:
1) NOTIFY THE GAS COMPANY OF THE PROPOSED LOCATION OF EXCAVATION.
2) TAKE PRECAUTION TO AVOID DAMAGE TO GAS COMPANY INSTALLATIONS.
SEE PROVINCIAL REGULATION 140/92 FOR DETAILS

METRIC

WHOLE NUMBERS INDICATE MILLIMETRES
DECIMALIZED NUMBERS INDICATE METRES



Certificate of Authorization
Stantec Consulting Ltd.
No. 1301

	CATCH BASIN				CONCRETE PRESERVATION
	CURB INLET				DIAMOND GRINDING
	150 WM WATERMAIN				CONCRETE MILL
	MANHOLE				PAVEMENT REPAIR FABRIC
	VALVE				CONSTRUCTION LIMITS
	HYDRANT				FULL DEPTH REPAIRS
	HYDRANT VALVE				
	PROPERTY LINE				
	300 LDS LAND DRAINAGE SEWER				
	250 WWS WASTE WATER SEWER				
	GAS				
EXISTING	LEGEND-PLAN	PROPOSED	EXISTING	LEGEND-PLAN	PROPOSED

LOCATION APPROVED UNDERGROUND STRUCTURES

SUPV. U/G STRUCTURES COMMITTEE DATE

NOTE:

LOCATION OF UNDERGROUND STRUCTURES AS SHOWN ARE BASED ON THE BEST INFORMATION AVAILABLE BUT NO GUARANTEE IS GIVEN THAT ALL EXISTING UTILITIES ARE SHOWN OR THAT THE GIVEN LOCATIONS ARE EXACT. CONFIRMATION OF EXISTENCE AND EXACT LOCATION OF ALL SERVICES MUST BE OBTAINED FROM THE INDIVIDUAL UTILITIES BEFORE PROCEEDING WITH CONSTRUCTION.

B.M. ELEV.

0	ISSUED FOR TENDER	25.05.14	M.E.E.		
NO.	REVISIONS	DATE	BY	DATE	25.05.01



DESIGNED BY	D.J.W.	CHECKED BY	D.J.M.
DRAWN BY	V.K.	APPROVED BY	M.E.E.
HOR. SCALE:	1:500	RELEASED FOR CONSTRUCTION:	
VERTICAL:	N/A	DATE	

ENGINEER'S SEAL

CONSULTANT DRAWING NO.
C-103



THE CITY OF WINNIPEG
PUBLIC WORKS DEPARTMENT
ENGINEERING SERVICES DIVISION

2025 STREET MAINTENANCE PRESERVATION PROGRAM
LOGAN AVENUE - EAST / WEST BOUND
CONCRETE PRESERVATION AND DIAMOND GRINDING FROM BLAKE STREET TO WESTON STREET

SHEET	4	OF	7
CAD FILE	DRAWING NUMBER	113708646	
CITY DRAWING NUMBER	P-3595-04		