

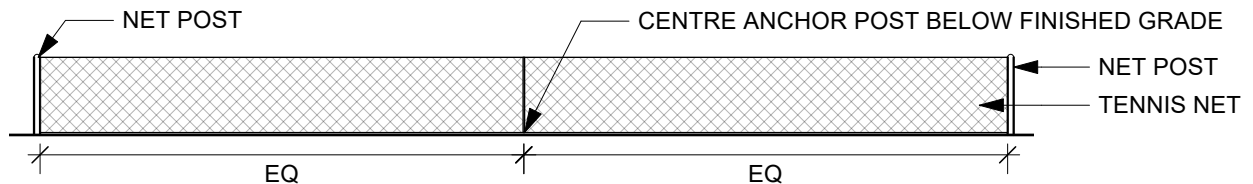
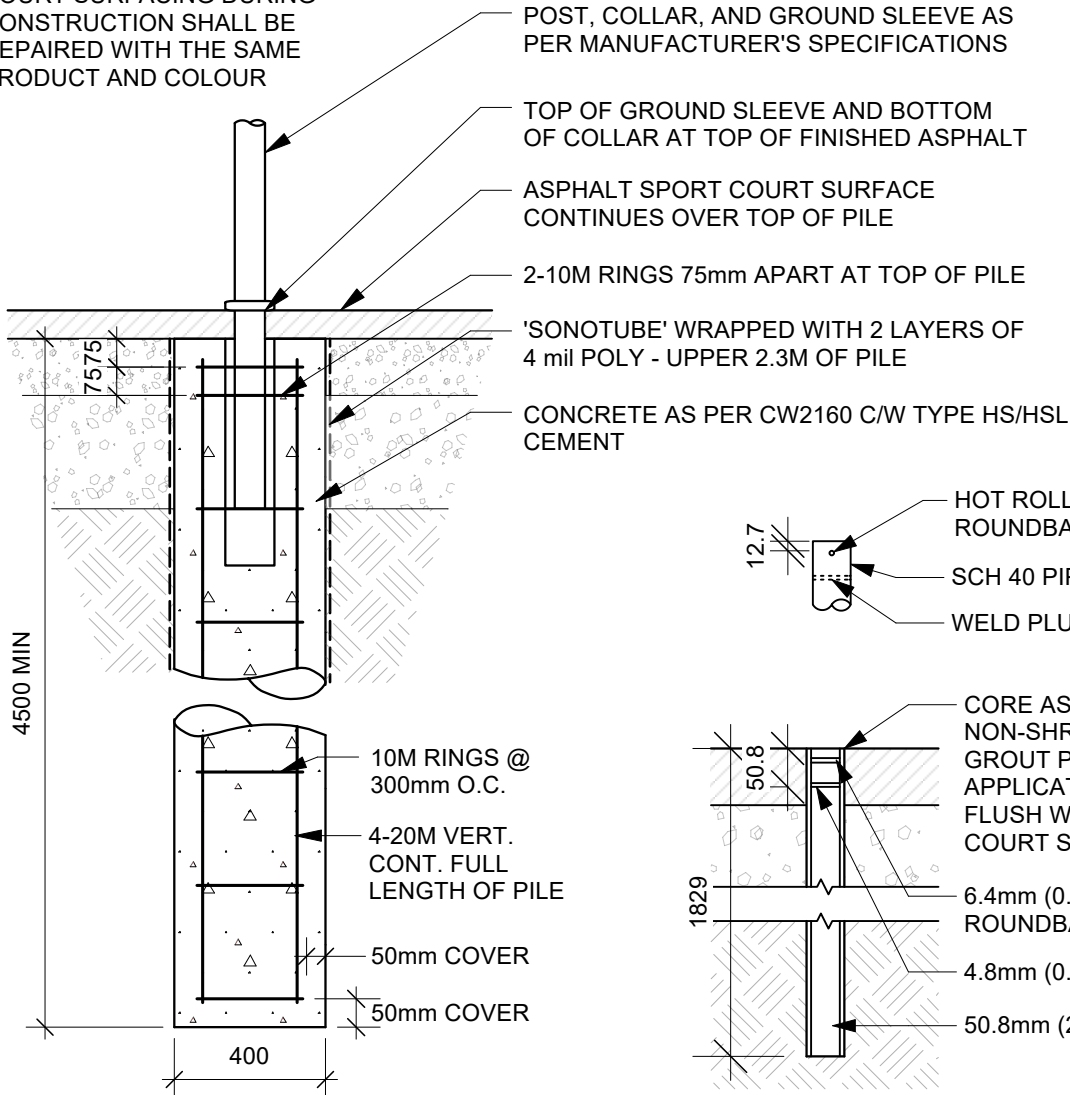
NOTES

1. EMBEDMENT DEPTH OF POST AS PER MANUFACTURER'S SPECIFICATIONS
2. ASPHALT SPORT COURT SURFACE AS PER SCD-305 OR SCD-305A
3. CONCRETE UNDERGROUND STRUCTURES AS PER CW2160
4. ANY DAMAGE MADE TO THE SPORT COURT SURFACING DURING CONSTRUCTION SHALL BE REPAIRED WITH THE SAME PRODUCT AND COLOUR

Drawing Title:

TENNIS/PICKLEBALL NET POST CONCRETE PILE DETAIL

Drawing No:

SCD-301**TENNIS NET ELEVATION**

SCALE 1:100

DIMENSIONS SHOWN ARE IN MILLIMETRES UNLESS OTHERWISE SPECIFIED

Revision: 3
 DATE: June 2025
 SCALE: N.T.S.
 DRAWN BY: MK

The City of Winnipeg
 Planning, Property and Development Department
 Planning and Land Use Division
 Unit 15 - 30 Fort Street, Winnipeg, MB, R3C 4X5

