

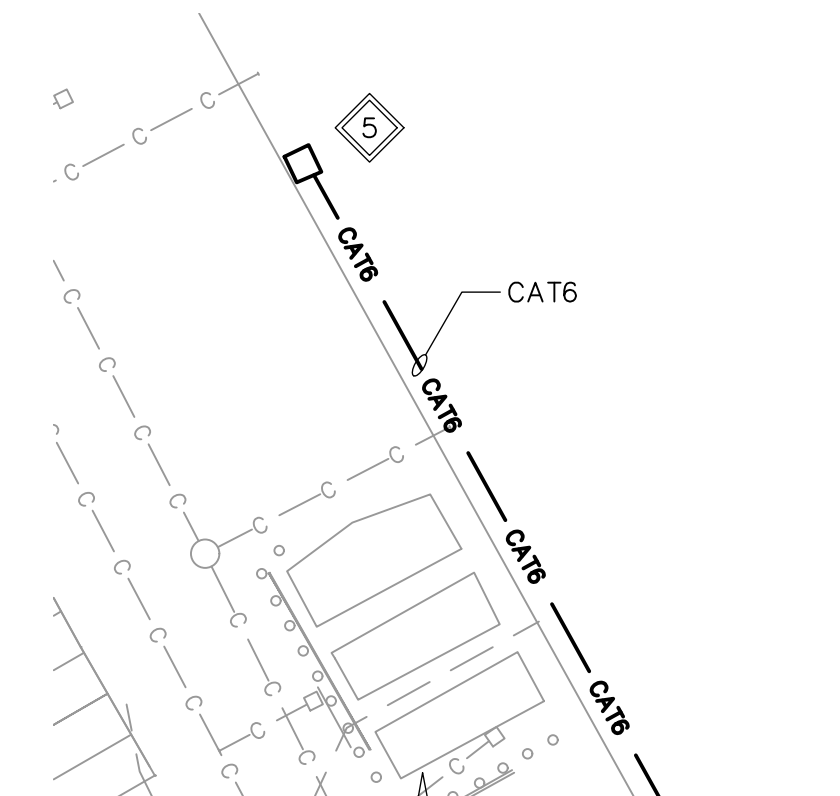
CONTINUED ON THE LOWER RIGHT

GENERAL NOTES:

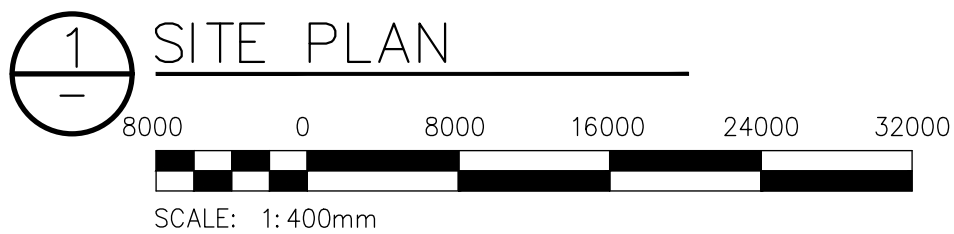
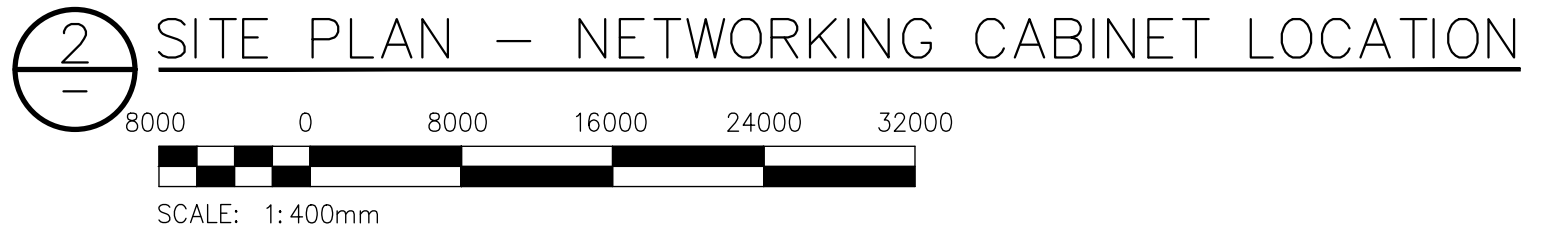
1. CONTRACTOR TO PERFORM LOCATES PRIOR TO ANY UNDERGROUND WORKS. NOT ALL UNDERGROUND UTILITIES AND STRUCTURES ARE SHOWN.
2. REFER TO CIVIL DRAWING C03 FOR ADDITIONAL INFORMATION.
3. HAZARDOUS AREA CLASSIFICATION AND ELECTRICAL DESIGN OF HYDROGEN FUELLING SKID IS BY OTHERS. REFER TO AZOLLA DRAWINGS FOR MORE INFORMATION.

KEYNOTES:

- 1 EXISTING ELECTRICAL TO BE RELOCATED ONE STALL NORTH OF CURRENT POSITION. EXTEND CABLING AS REQUIRED.
- 2 DEMOLISH, CUT BACK, AND MAKE SAFE EXISTING ELECTRICAL WITHIN FOOTPRINT OF NEW HYDROGEN FUELING STATION.
- 3 CABLE ENTRY TO UTILITIES SKID TO BE ON EAST WALL AND MINIMUM 5M FROM DISPENSER. COORDINATE CABLE ENTRY WITH AZOLLA ELECTRICAL WORKS. WALL PENETRATIONS NOT PERMITTED WITHIN EXTENT OF HAZARDOUS AREA. REFER TO AZOLLA DRAWINGS FOR MORE INFORMATION.
- 4 INSTALL NEW GROUND BUS IN UTILITY BUILDING AND TERMINATE GROUNDING CABLES FROM DP-2 AND DP-4. BONDING OF EQUIPMENT WITHIN NEW HYDROGEN FUELING FACILITY BY OTHERS.
- 5 EXISTING SWITCH LOCATED IN BAY 37. COORDINATE CONNECTION OF INTERNET TO HYDROGEN FUELLING SKID WITH TRANSIT IT. CAT6 TO BE RUN IN CONDUIT BOTH WITHIN BUILDING AND IN TRENCH.
- 6 DEMOLISH, CUT BACK, AND MAKE SAFE EXISTING ELECTRICAL ASSOCIATED WITH RECEPTACLES ON REMOVED SECTION OF PARKING RAIL.
- 7 EXISTING PARKING LOT LUMINAIRE AND ASSOCIATED POLE-MOUNTED CAMERA TO BE RELOCATED TO NEW LOCATION AS SHOWN. EXTEND CABLING AS REQUIRED. ALL ELECTRICAL WORKS RELATING TO THE RELOCATED POLE ARE NOT PERMITTED WITHIN THE HAZARDOUS AREAS. REFER TO AZOLLA DRAWINGS AND COORDINATE LOCATION.
- 8 MOUNT PANEL ON WEST SIDE OF PARKING RAIL. SUPPLY AND INSTALL ADDITIONAL BRACING TO SUPPORT PANEL AS REQUIRED, SIMILAR TO EXISTING INSTALLATION.
- 9 PROVIDE CABLING IN DEDICATED CONDUIT TO CONNECT DISCRETE ALARM SIGNAL FROM AZOLLA SKID TO EXISTING FIRE ALARM PANEL. UPDATE FIRE ALARM PANEL PROGRAMMING FOR NEW INPUT.



CONTINUED FROM UPPER LEFT



10	—	—
9	—	—
8	—	—
7	—	—
6	—	—
5	—	—
4	—	—
3	—	—
2	—	—
1	24-0107-004_E03	ELECTRICAL — DETAILS
NO.	DRAWING NUMBER	REFERENCE DRAWING TITLE
REFERENCE DRAWINGS		



B.M. ELEV.			
CONSTRUCTION COMPLETION DATE: YYYY MM DD			
0	ISSUED FOR CONSTRUCTION	2025 07 08	
NO.	REVISIONS	DATE	BY

KGS GROUP			
DESIGNED BY	CLR	CHECKED BY	
DRAWN BY	DIS	APPROVED BY	
SCALE:	AS SHOWN	RELEASED FOR CONSTRUCTION	
DATE	2024 07 22	DATE	

ENGINEER'S SEAL
CONSULTANT DRAWING NUMBER
24-0107-04_E02

	THE CITY OF WINNIPEG	
	TRANSIT DEPARTMENT ENGINEERING DIVISION	
	WINNIPEG TRANSIT – FORT ROUGE FACILITY HYDROGEN REFUELLING STATION ELECTRICAL SITE PLAN	
CITY DRAWING NUMBER	465-2025-E0002	SHEET 1 OF 1