

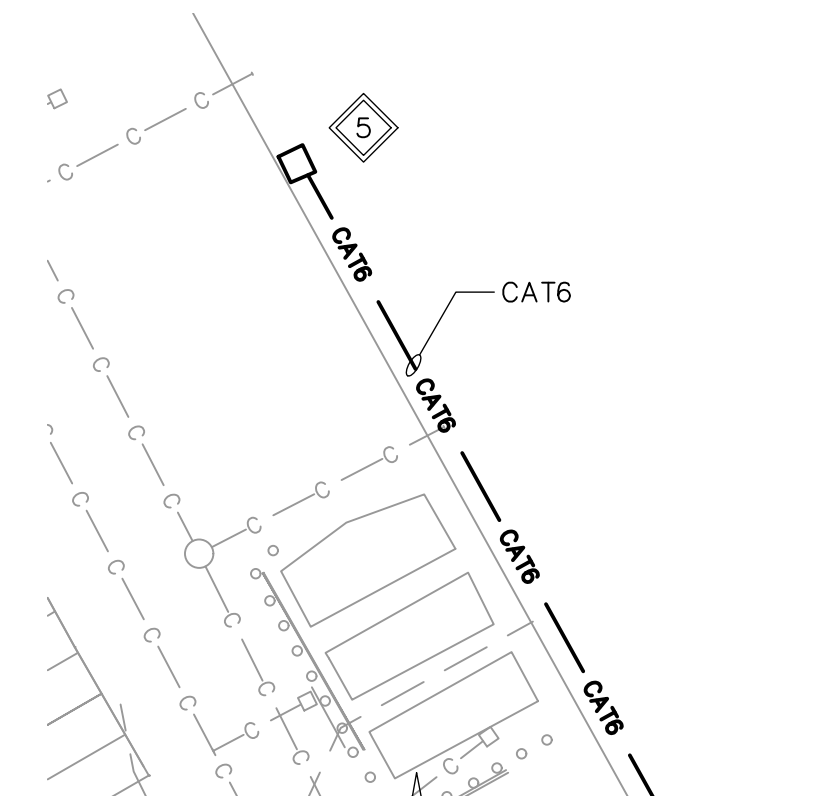
CONTINUED ON THE LOWER RIGHT

GENERAL NOTES:

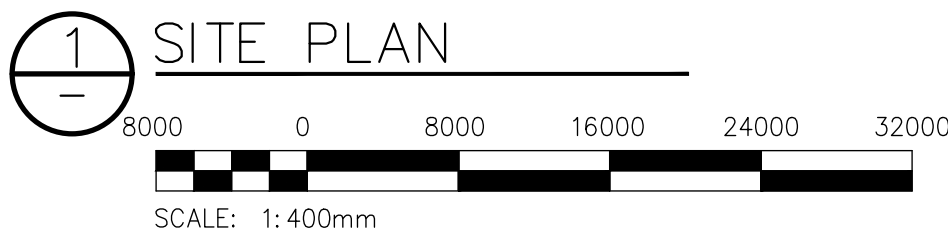
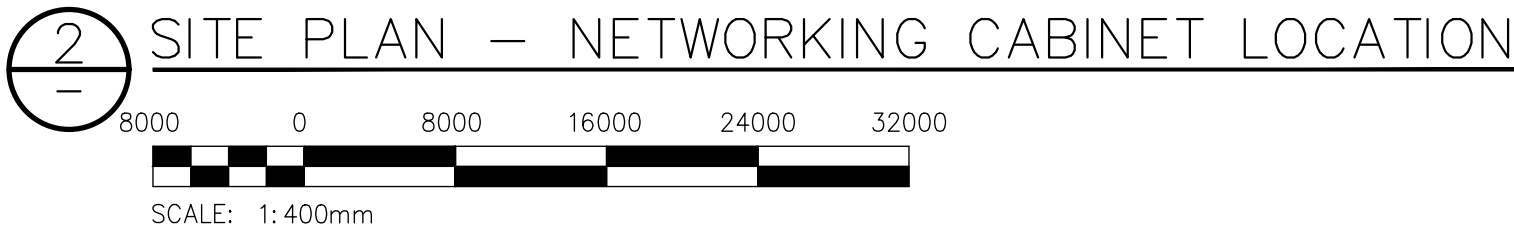
1. CONTRACTOR TO PERFORM LOCATES PRIOR TO ANY UNDERGROUND WORKS. NOT ALL UNDERGROUND UTILITIES AND STRUCTURES ARE SHOWN.
2. REFER TO CIVIL DRAWING C03 FOR ADDITIONAL INFORMATION.
3. HAZARDOUS AREA CLASSIFICATION AND ELECTRICAL DESIGN OF HYDROGEN FUELLING SKID IS BY OTHERS. REFER TO AZOLLA DRAWINGS FOR MORE INFORMATION.

KEYNOTES:

- 1 EXISTING ELECTRICAL TO BE RELOCATED ONE STALL NORTH OF CURRENT POSITION. EXTEND CABLING AS REQUIRED.
- 2 DEMOLISH, CUT BACK, AND MAKE SAFE EXISTING ELECTRICAL WITHIN FOOTPRINT OF NEW HYDROGEN FUELING STATION.
- 3 CABLE ENTRY TO UTILITIES SKID TO BE ON EAST WALL AND MINIMUM 5M FROM DISPENSER. COORDINATE CABLE ENTRY WITH AZOLLA ELECTRICAL WORKS. WALL PENETRATIONS NOT PERMITTED WITHIN EXTENT OF HAZARDOUS AREA. REFER TO AZOLLA DRAWINGS FOR MORE INFORMATION.
- 4 INSTALL NEW GROUND BUS IN UTILITY BUILDING AND TERMINATE GROUNDING CABLES FROM DP-2 AND DP-4. BONDING OF EQUIPMENT WITHIN NEW HYDROGEN FUELING FACILITY BY OTHERS.
- 5 EXISTING SWITCH LOCATED IN BAY 37. COORDINATE CONNECTION OF INTERNET TO HYDROGEN FUELLING SKID WITH TRANSIT IT. CAT6 TO BE RUN IN CONDUIT BOTH WITHIN BUILDING AND IN TRENCH.
- 6 DEMOLISH, CUT BACK, AND MAKE SAFE EXISTING ELECTRICAL ASSOCIATED WITH RECEPTACLES ON REMOVED SECTION OF PARKING RAIL.
- 7 EXISTING PARKING LOT LUMINAIRE AND ASSOCIATED POLE-MOUNTED CAMERA TO BE RELOCATED TO NEW LOCATION AS SHOWN. EXTEND CABLING AS REQUIRED. ALL ELECTRICAL WORKS RELATING TO THE RELOCATED POLE ARE NOT PERMITTED WITHIN THE HAZARDOUS AREAS. REFER TO AZOLLA DRAWINGS AND COORDINATE LOCATION.
- 8 MOUNT PANEL ON WEST SIDE OF PARKING RAIL. SUPPLY AND INSTALL ADDITIONAL BRACING TO SUPPORT PANEL AS REQUIRED, SIMILAR TO EXISTING INSTALLATION.
- 9 PROVIDE CABLING IN DEDICATED CONDUIT TO CONNECT DISCRETE ALARM SIGNAL FROM AZOLLA SKID TO EXISTING FIRE ALARM PANEL. CABLE TO BE 18/2 FT4 "SECUREX" FIRE ALARM CABLE OR APPROVED EQUIVALENT. SUPPLY, INSTALL, AND CONNECT MONITORING MODULE TO MATCH EXISTING FIRE ALARM MANUFACTURER. WIRE IN FAIL SAFE CONFIGURATION. UPDATE FIRE ALARM PANEL PROGRAMMING TO INCORPORATE NEW CONNECTION AND PERFORM VI.



CONTINUED FROM UPPER LEFT



|                    |                 |                         |
|--------------------|-----------------|-------------------------|
| 10                 | —               | —                       |
| 9                  | —               | —                       |
| 8                  | —               | —                       |
| 7                  | —               | —                       |
| 6                  | —               | —                       |
| 5                  | —               | —                       |
| 4                  | —               | —                       |
| 3                  | —               | —                       |
| 2                  | —               | —                       |
| 1                  | 24-0107-004_E03 | ELECTRICAL — DETAILS    |
| NO.                | DRAWING NUMBER  | REFERENCE DRAWING TITLE |
| REFERENCE DRAWINGS |                 |                         |



|  |                            |            |     |
|--|----------------------------|------------|-----|
| B.M.<br>ELEV.                            |                            |            |     |
| CONSTRUCTION COMPLETION DATE: YYYY MM DD |                            |            |     |
|  |                            |            |     |
|  |                            |            |     |
|  |                            |            |     |
| 1  | RE-ISSUED FOR CONSTRUCTION | 2025 07 29 |     |
| 0  | ISSUED FOR CONSTRUCTION    | 2025 07 08 | CLR |
| NO.                                      | REVISIONS                  | DATE       | BY  |

|                  |            |                           |      |
|------------------|------------|---------------------------|------|
| <b>KGS GROUP</b> |            |                           |      |
| DESIGNED BY      | CLR        | CHECKED BY                | TB   |
| DRAWN BY         | DIS        | APPROVED BY               | CLR  |
| SCALE:           | AS SHOWN   |                           |      |
| DATE             | 2024 07 22 | RELEASED FOR CONSTRUCTION | DATE |

|                           |  |
|---------------------------|--|
| ENGINEER'S SEAL           |  |
| CONSULTANT DRAWING NUMBER |  |
| 24-0107-04_E02            |  |



THE CITY OF WINNIPEG  
TRANSIT DEPARTMENT  
ENGINEERING DIVISION  
WINNIPEG TRANSIT – FORT ROUGE FACILITY  
HYDROGEN REFUELLING STATION  
ELECTRICAL  
SITE PLAN

CITY DRAWING NUMBER  
465-2025-E0002  
FILE PATH: R:\Projects\2024\24-0107-004\Elec\24-0107-004\_E02.dwg  
FILE NAME: 24-0107-004\_E02.dwg

SHEET 1 OF 1

BID OPPORTUNITY: 465-2025  
CONTRACT NUMBER: -

PLOT DATE: 2025 07 29