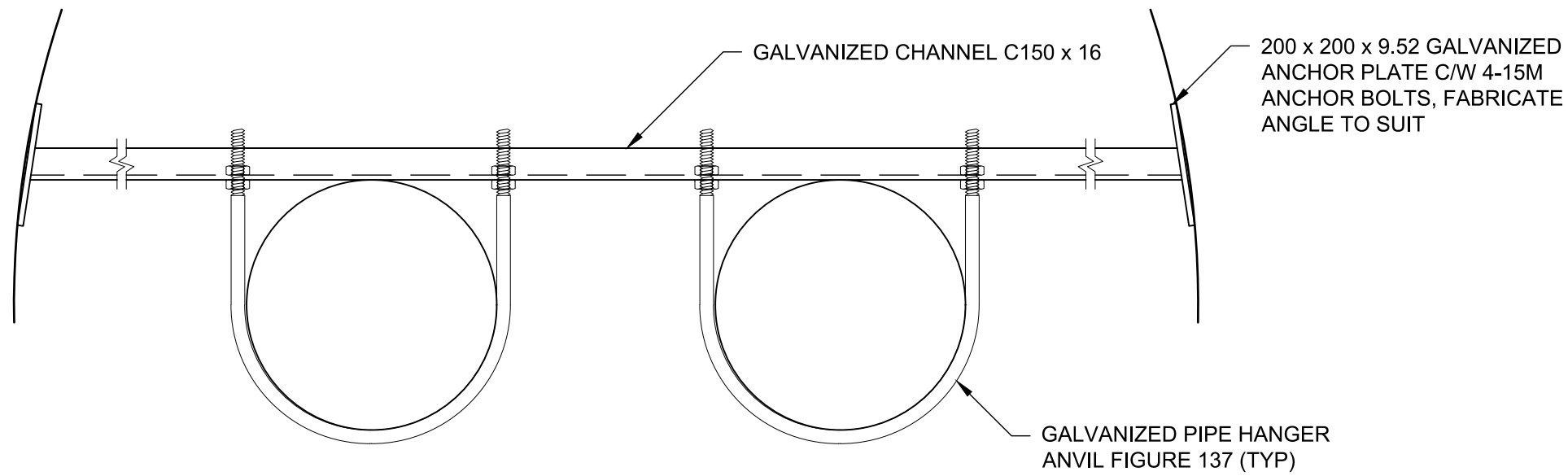
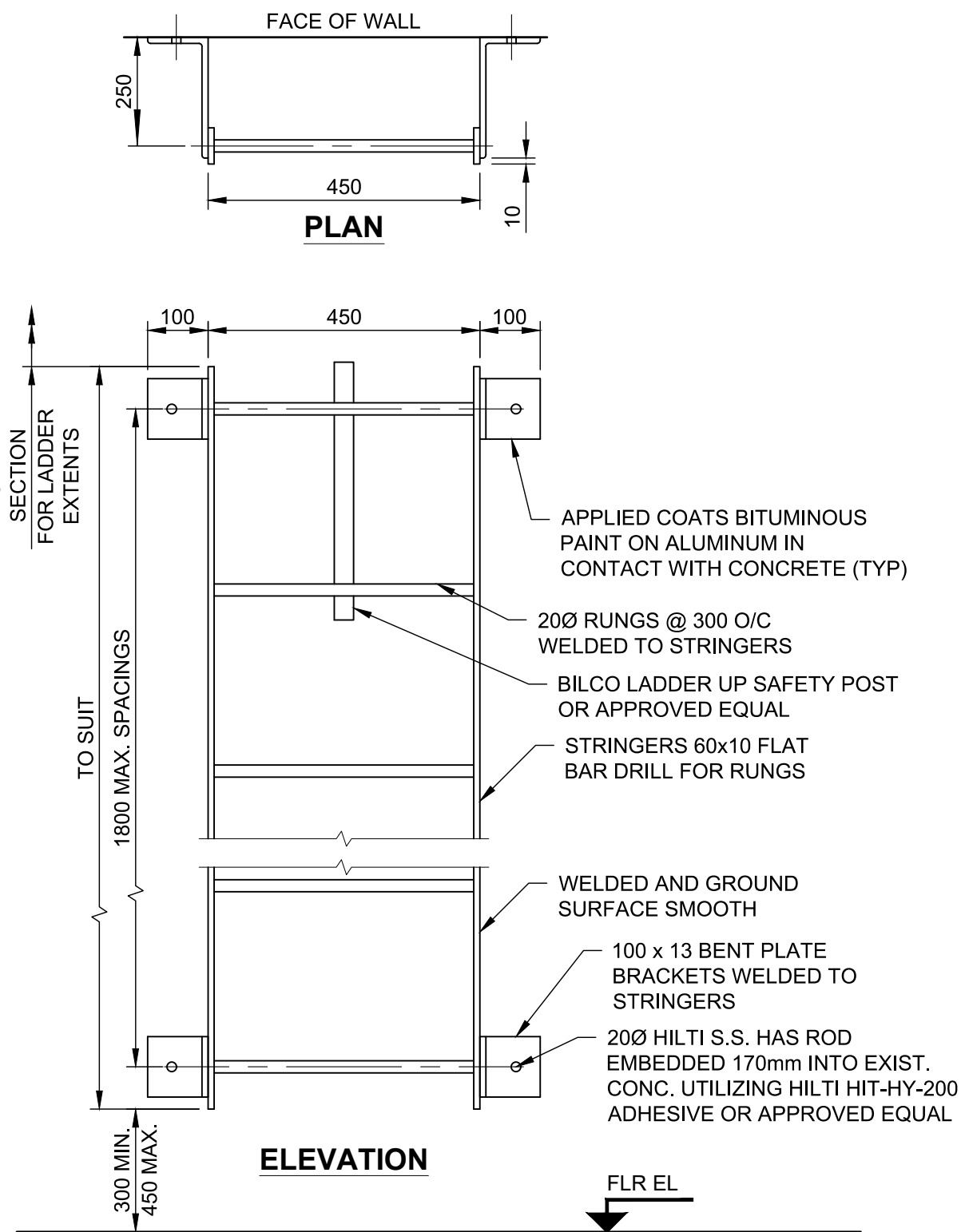


4 | DETAIL
AIR GAP MONITOR



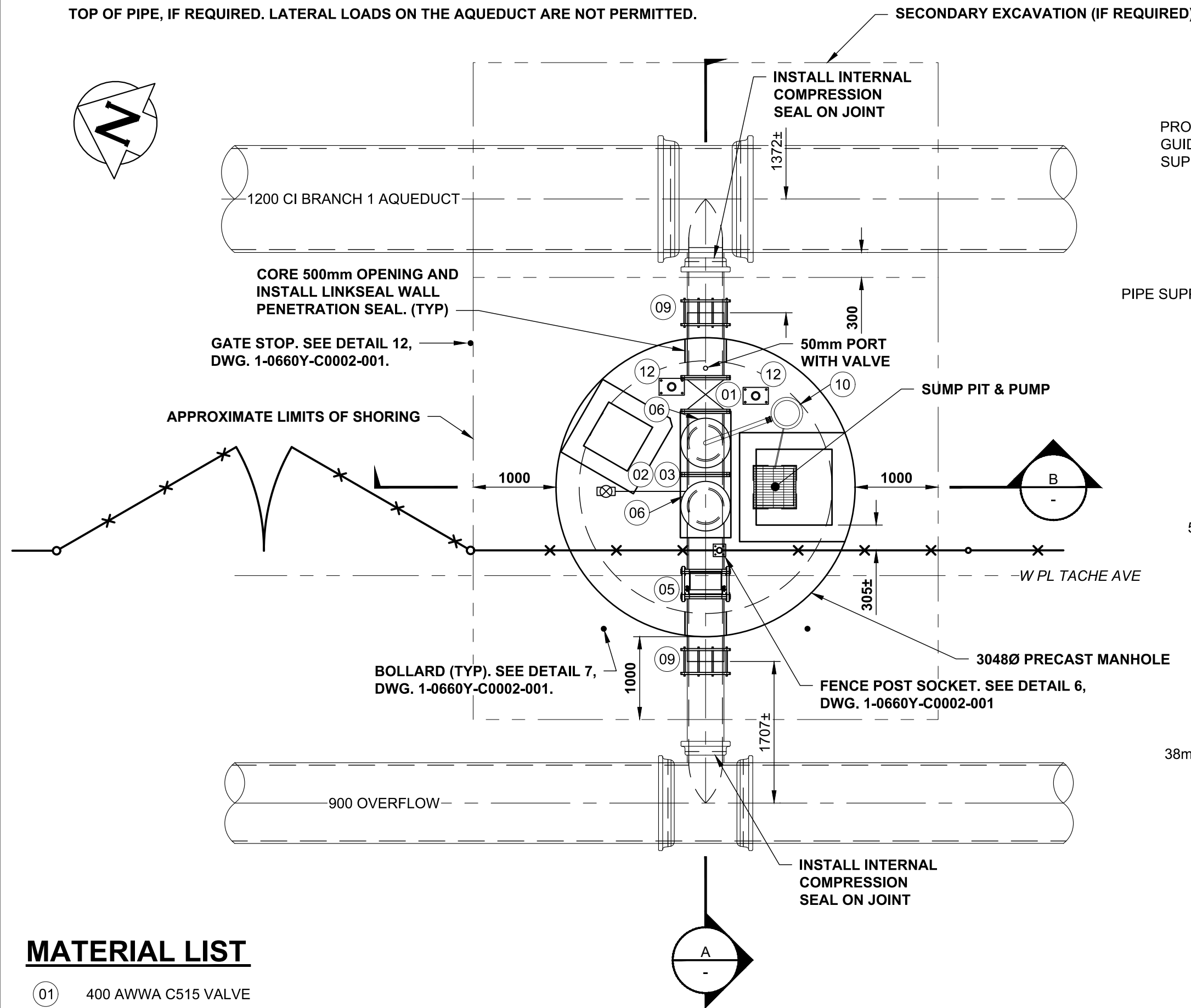
2 | DETAIL
PIPE SUPPORT



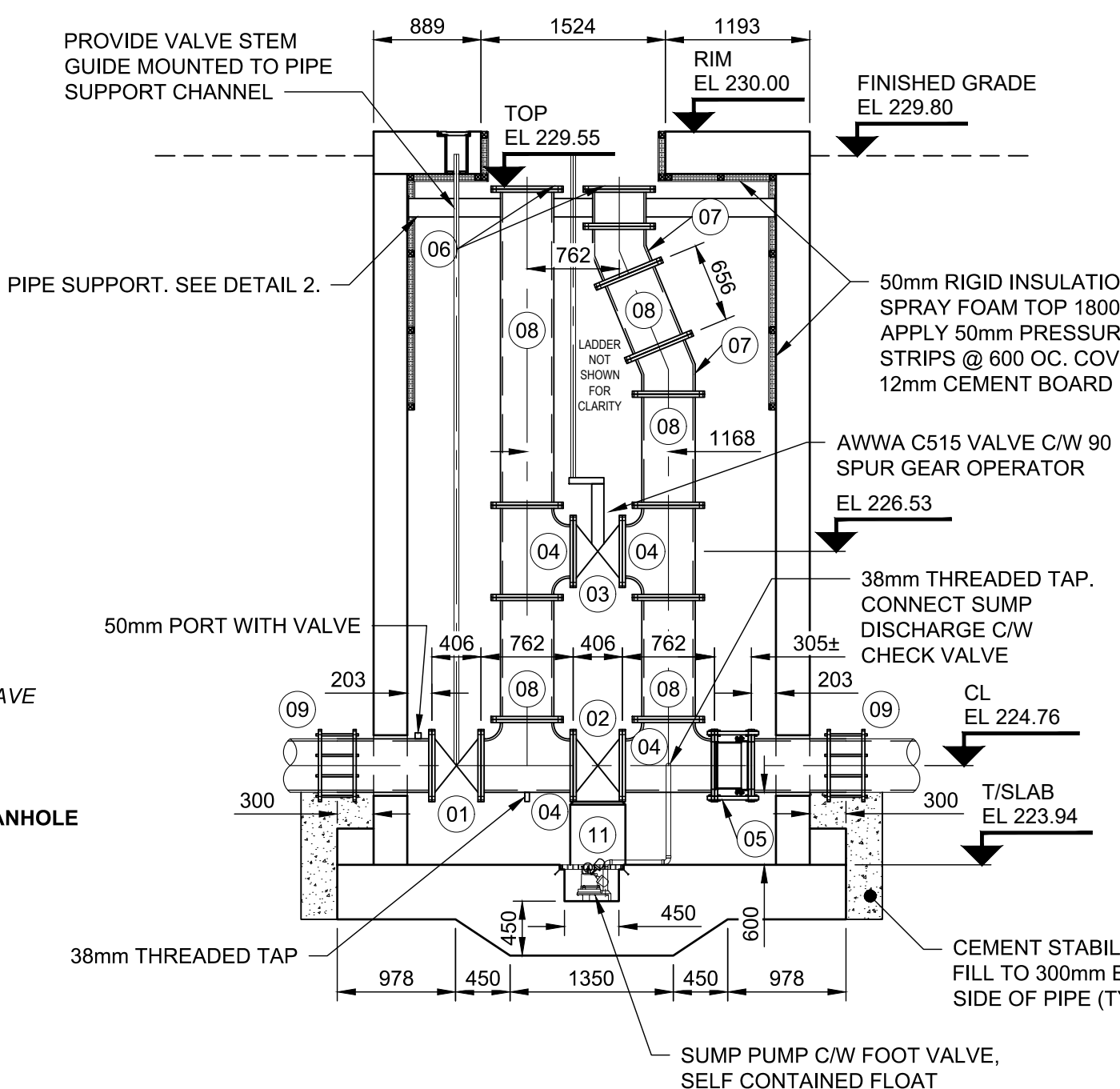
3 | DETAIL
ALUMINUM LADDER

EXCAVATION AND SHORING NOTES:

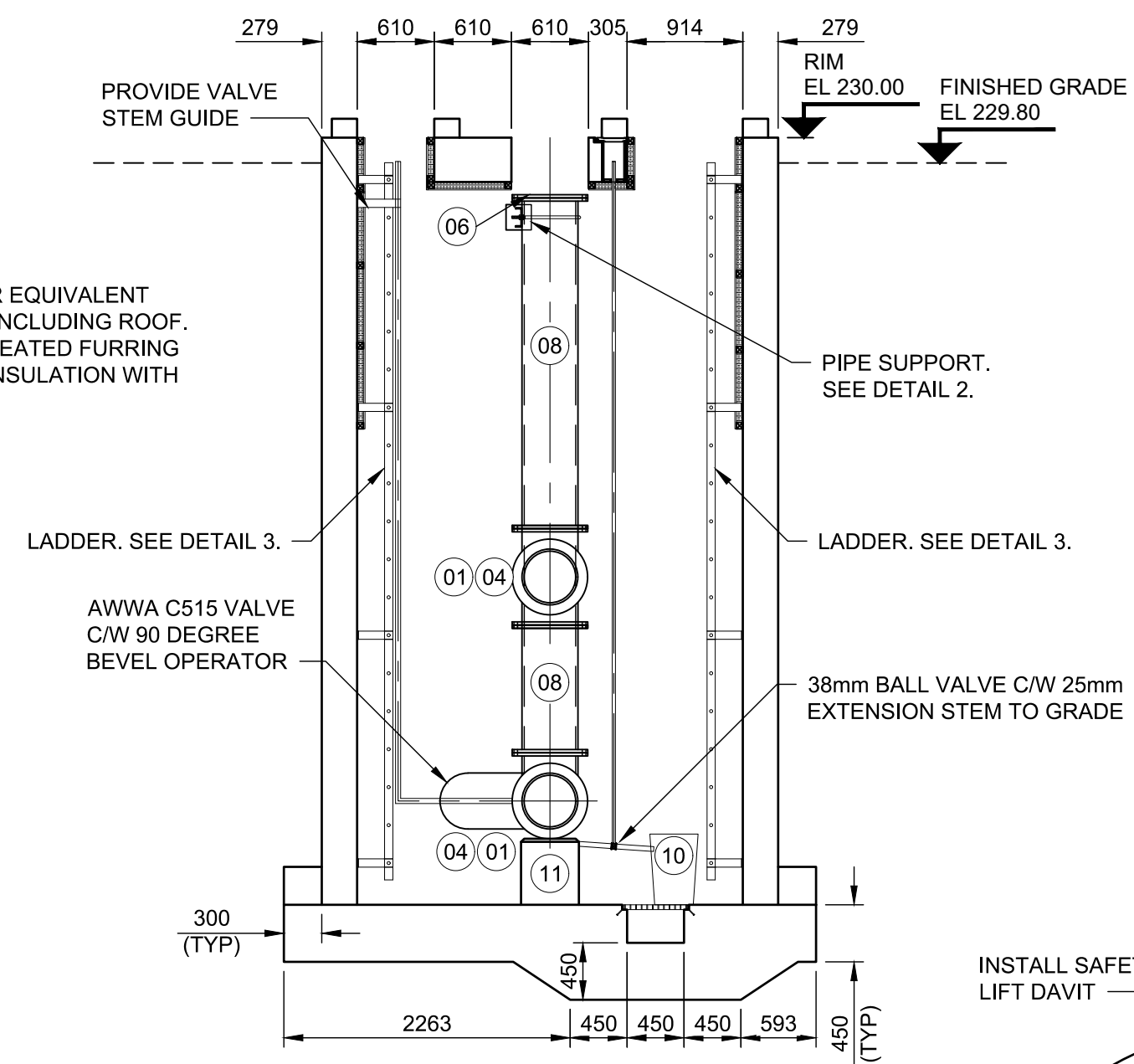
1. EXPOSE SIDES OF PIPELINES BY HYDRO EXCAVATION PRIOR TO INSTALLING PILES
2. PRE BORE PILES TO BELOW INVERT OF PIPELINES
3. MINIMUM OFFSET FROM CLOSEST EDGE OF PILE/SHORING TO PIPELINES IS 300mm
4. SECONDARY EXCAVATION IS PERMITTED ABOVE AQUEDUCT TO WITH 1.0m ABOVE TOP OF PIPE, IF REQUIRED. LATERAL LOADS ON THE AQUEDUCT ARE NOT PERMITTED.



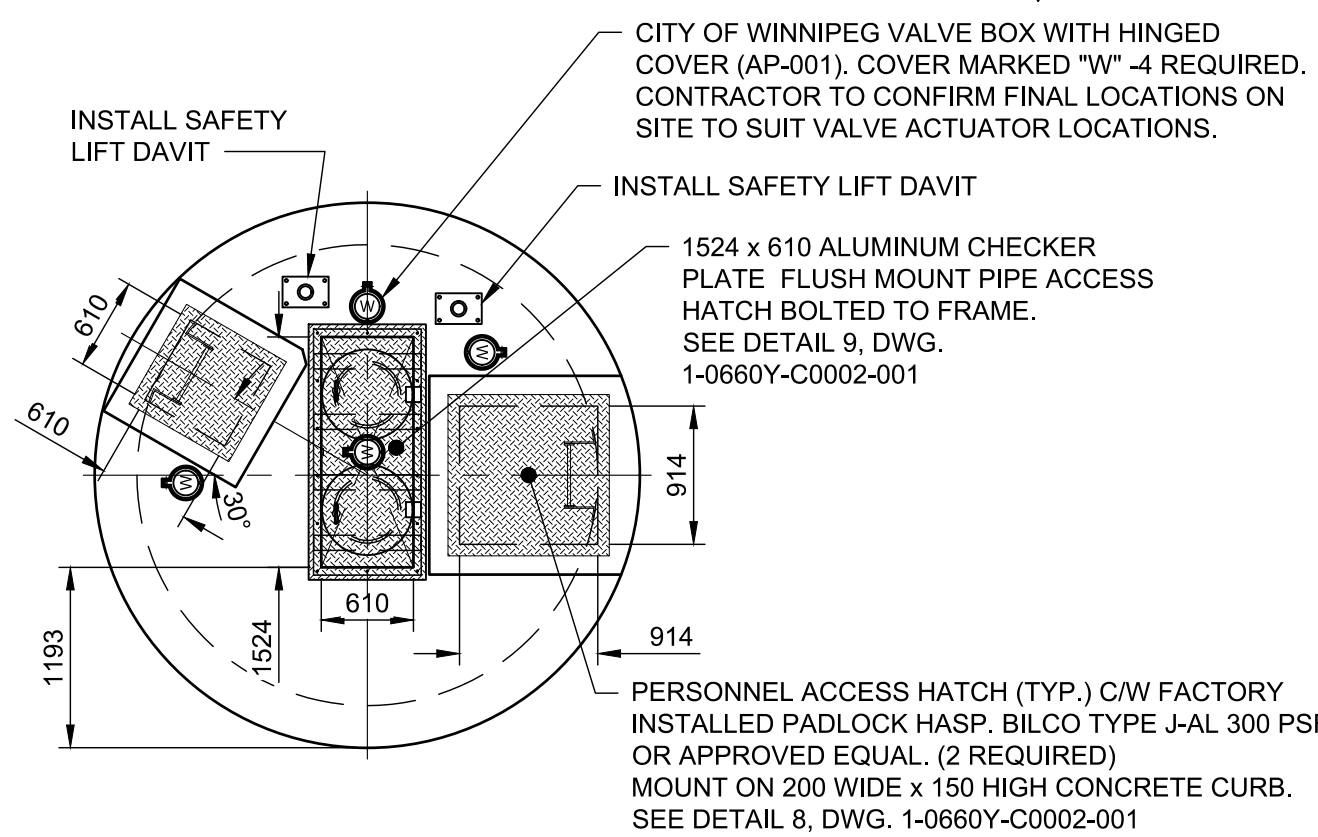
1 | DETAIL
PLAN



A | SECTION



B | SECTION



DETAIL
ROOF PLAN

MATERIAL LIST

- | | |
|----|---|
| 01 | 400 AWWA C515 VALVE |
| 02 | 400 AWWA C515 VALVE C/W BEVEL GEAR OPERATOR |
| 03 | 400 AWWA C515 VALVE C/W SPUR GEAR OPERATOR |
| 04 | 400x400x400 AWWA C110 CAST IRON TEE (FLxFLxFL) |
| 05 | 400 DISASSEMBLY COUPLER |
| 06 | AWWA C115 BLIND FLANGE CL 150 |
| 07 | 22.5" BEND |
| 08 | SPOOL PIECE (FLxFL LENGTH TO SUIT) |
| 09 | SLEEVE COUPLER (AWWA C219) |
| 10 | AIR GAP MONITOR (SEE DETAIL 4) |
| 11 | VALVE BASE BLOCK (SEE DETAIL 5, DWG. 1-0660Y-S0001-001) |
| 12 | SAFETY LIFT DAVIT (CONTRACTOR TO CONFIRM FINAL LOCATIONS ON SITE) |

METRIC
WHOLE NUMBERS INDICATE MILLIMETRES
DECIMALIZED NUMBERS INDICATE METRES

**ENGINEERS
GEOSCIENTISTS
MANITOBA**
Certificate of Authorization
AECOM Canada ULC
No. 4671

**FOR INDEX SEE
1-0660Y-D0002-001**

LOCATION APPROVED UNDERGROUND STRUCTURES		B.M. ELEV.		DESIGNED BY MK/MGM		CHECKED BY JAT		ENGINEER'S SEAL 		THE CITY OF WINNIPEG WATER AND WASTE DEPARTMENT ENGINEERING SERVICES DIVISION	
SUPV. U/G STRUCTURES COMMITTEE		CONSTRUCTION COMPLETION DATE: YYYY MM DD		DRAWN BY ADL		APPROVED BY KF		CONSULTANT DRAWING NUMBER C-4001		TACHE BOOSTER PUMPING STATION AQUEDUCT DRAIN CHAMBER SECTIONS & DETAILS	
NOTE: LOCATION OF UNDERGROUND STRUCTURES AS SHOWN ARE BASED ON THE BEST INFORMATION AVAILABLE BUT NO GUARANTEE IS GIVEN THAT ALL EXISTING UTILITIES ARE SHOWN OR THAT THE GIVEN LOCATIONS ARE EXACT. CONFIRMATION OF EXISTENCE AND EXACT LOCATION OF ALL SERVICES MUST BE OBTAINED FROM THE INDIVIDUAL UTILITIES BEFORE PROCEEDING WITH CONSTRUCTION.		0 ISSUED FOR TENDER		25/07/22 ADL		RELEASED FOR CONSTRUCTION M. Skinner		2025 07 22		SHEET 04 OF 07	
NO.		REVISIONS		DATE		BY		DATE		CITY DRAWING NUMBER 1-0660Y-C0001-001	