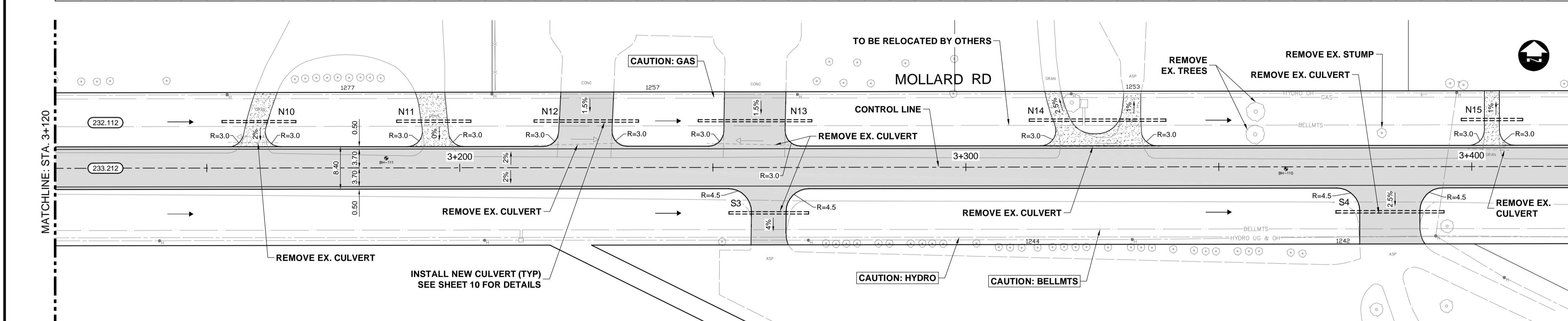
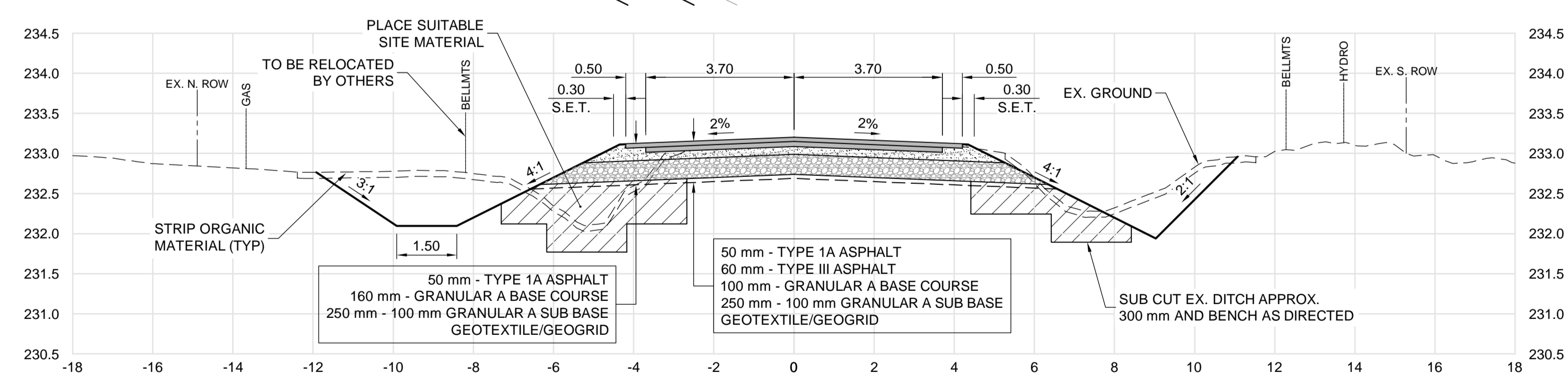


- CONSTRUCTION NOTES:**
- ALL WORK AND MATERIALS TO BE IN ACCORDANCE WITH LATEST REVISION OF THE CITY OF WINNIPEG STANDARD CONSTRUCTION SPECIFICATIONS.
 - LEGAL PLAN AND UNDERGROUND INFORMATION FROM CITY OF WINNIPEG LBIS. CONTRACTOR TO VERIFY ALL UNDERGROUNDS IN THE FIELD.
 - CONTRACTOR TO TAKE PRECAUTIONARY STEPS TO AVOID DAMAGE FROM CONSTRUCTION ACTIVITIES TO TREES WITHIN THE LIMITS OF CONSTRUCTION.
 - LOCATION OF EXISTING SERVICES TO BE CONFIRMED IN THE FIELD BY THE CONTRACTOR.
 - HYDRO POLES AND ANCHORS THAT REQUIRE TEMPORARY SUPPORT, REMOVAL OR REPLACEMENT, TO BE DONE SO AT THE EXPENSE OF THE CONTRACTOR, AS NECESSARY.
 - LIMITS OF WORK FOR CLEARING AND GRUBBING, RESTORATION OF APPROACHES AND LANDSCAPING TO BE DETERMINED BY THE CONTRACT ADMINISTRATOR.
 - IF POWER EQUIPMENT OR EXPLOSIVES ARE TO BE USED FOR EXCAVATION ON THIS PROJECT THE CONTRACTOR MUST NOTIFY THE GAS COMPANY OF THE PROPOSED LOCATION OF EXCAVATION, TAKE PRECAUTION TO AVOID DAMAGE TO GAS COMPANY INSTALLATIONS (SEE PROVINCIAL REGULATION 21072 FOR DETAILS) AND OBTAIN EXCAVATION PERMITS PRIOR TO CONSTRUCTION.



- ABBREVIATIONS:**
- | | | | |
|------|----------------|-------|-------------------|
| CONC | CONCRETE | HYDRO | HYDRO MANHOLE |
| ASP | ASPHALT | TEL | TELEPHONE MANHOLE |
| TYP | TYPICAL | WV | WATER VALVE |
| EX | EXISTING | MH | MANHOLE |
| MH | MANHOLE | WV | WATER VALVE |
| WV | WATER VALVE | EL | ELEVATION |
| EL | ELEVATION | CB | CATCH BASIN |
| CB | CATCH BASIN | CP | CATCH PIT |
| CP | CATCH PIT | CI | CURB INLET |
| CI | CURB INLET | CL | CONTROL LINE |
| CL | CONTROL LINE | SL | STREET LIGHT |
| SL | STREET LIGHT | TS | TRAFFIC SIGNAL |
| TS | TRAFFIC SIGNAL | | |
- SYMBOLS:**
- | | |
|---|--------------------------|
| ○ | HYDRO MANHOLE |
| ○ | TELEPHONE MANHOLE |
| ○ | TRAFFIC SIGNAL SPICE PIT |
| ○ | WATER VALVE |
| ○ | HYDRANT |
| ○ | CURB STOP |
| ○ | GAS VALVE |
| ○ | HYDRO POLE |
| ○ | HYDRO POLE WITH LIGHT |
| ○ | STREET LIGHT |
| ○ | TRAFFIC SIGNAL |
| ○ | SIGNAL CONTROL BOX |
| ○ | BELLMTS PEDESTAL |
| ○ | TREE |
| ○ | IRON PROPERTY BAR |
| ○ | HYDRO GUY ANCHOR |

METRIC
WHOLE NUMBERS INDICATE MILLIMETRES
DECIMALIZED NUMBERS INDICATE METRES



SECTION - STA. 3+150
SCALE: H = 1:100, V = 1:50

150 WM	WATERMAIN	150 WM	CONCRETE ROAD	PROFILE	UNDERGROUND STRUCTURES	B.M. 654537 (SW CORNER OF MOLLARD AND KING EDWARD) ELEV. 233.128	DESIGNED BY TJH		ENGINEER'S SEAL M.R. DOUCEA Member 22306 2025/02/28		CITY DRAWING NUMBER
300 LDS	LAND DRAINAGE SEWER	300 LDS	ASPHALT ROAD	NORTH/WEST GUTTER	SUPV. U/G STRUCTURES	DATE	DRAWN BY TJH		2025 LOCAL STREET RENEWAL (25-R-10) MOLLARD ROAD RECONSTRUCTION		SHEET 6 OF 16
250 WWS	WASTE WATER SEWER	250 WWS	CONC ROAD W/ASP OVERLAY	SOUTH/EAST GUTTER			CHECKED BY MRD		PLAN-PROFILE - STA. 3+120 TO 3+420		CONSULTANT DRAWING NUMBER
HYDRO	HYDRO	BELLMTS	CONCRETE SIDEWALK	NORTH/WEST MED. GUTTER			APPROVED BY TJP		RELEASED FOR CONSTRUCTION		
BELLMTS	BELLMTS	100 GAS	ASPHALT PATH	SOUTH/EAST MED. GUTTER			HOR. SCALE 1:500	CONSULTANT PROJECT NUMBER 24-9201			
T.S.	TRAFFIC SIGNALS	S.L.	LANDSCAPING FEATURE	NORTH/WEST DITCH			VERTICAL 1:20				
S.L.	STREET LIGHTS		GRASS/SOD	SOUTH/EAST DITCH							
○	MANHOLE	●	ELEVATION (232.000)	NORTH/WEST SIDEWALK							
○	CATCH BASIN	■	PROPERTY LINE	SOUTH/EAST SIDEWALK							
○	CATCH PIT	▼	CURB RAMP								
○	EXISTING	○	DETECTABLE TILE								
○	LEGEND-PLAN	○	PROPOSED	EXISTING	LEGEND-PROFILE	PROPOSED					

C:\w\working_directory\projects_2024\dillon_400jh\dms87268\249201-CT-CON-MOLLARD.dwg