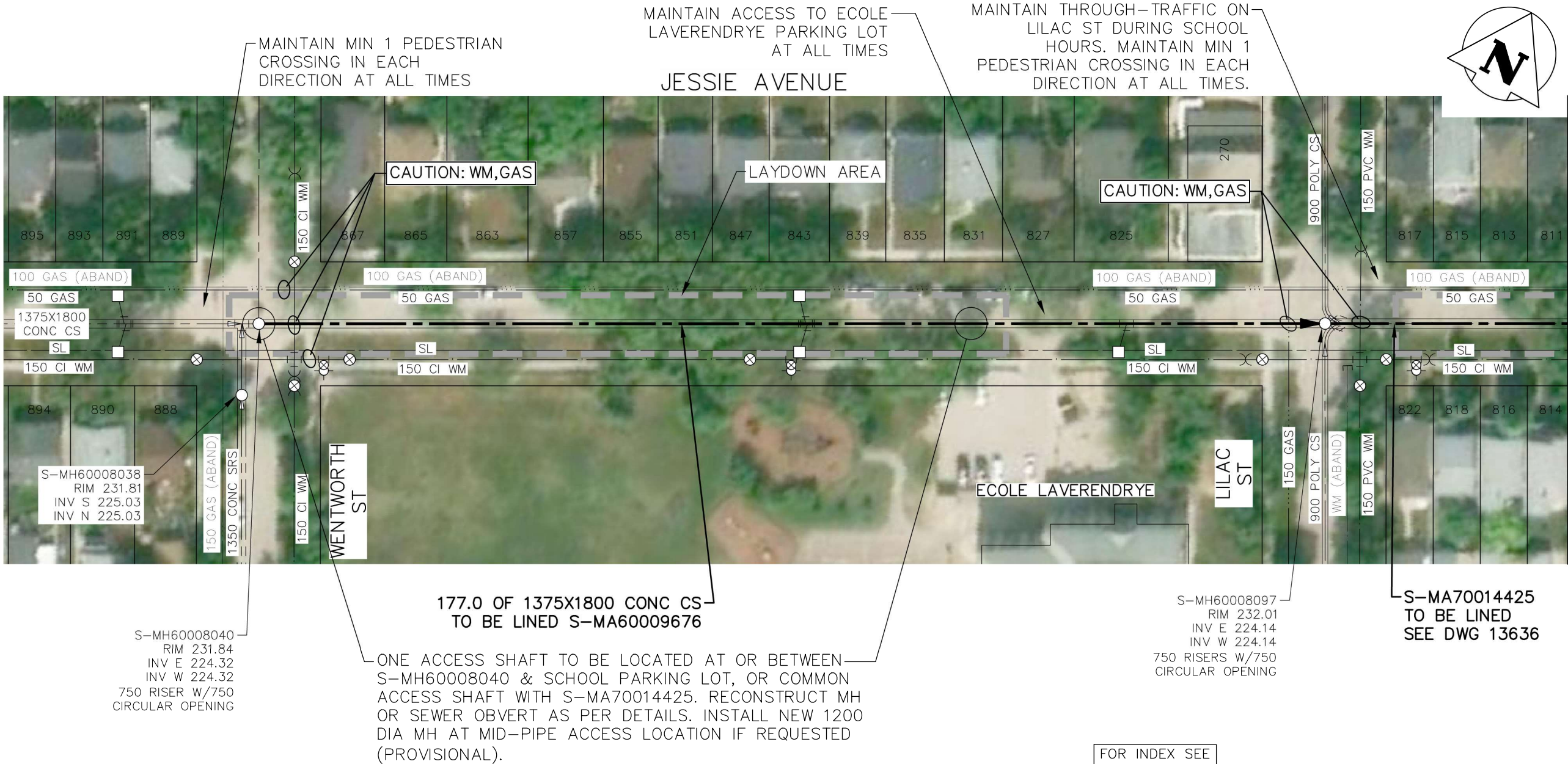


\\CA0050-PPFSS01\shared_projects\133600066\09. CAD\07 Sheets\02_civil\00066c-101.dwg



FOR CONTINUATION
SEE DWG. 13636

| SEWER JUNCTION INFORMATION FROM SEWER VIDEO INSPECTION | | |
|---|----------|-------|
| SEWER ID S-MA60009676 | | |
| DISTANCE FROM MH ID S-MH60008040 | | |
| DISTANCE | DIAMETER | CLOCK |
| 12.8 | 150 | 1:00 |
| 26.0 | 150 | 11:00 |
| 27.5 | 150 | 2:00 |
| 27.5 | 150 | 10:00 |
| 42.2 | 150 | 2:00 |
| 42.2 | 150 | 10:00 |
| 57.9 | 150 | 10:00 |
| 61.8 | 150 | 10:00 |
| 73.1 | 150 | 3:00 |
| 73.1 | 150 | 9:00 |
| 79.2 | 150 | 10:00 |
| 88.7 | 150 | 2:00 |
| 88.7 | 150 | 10:00 |
| 92.1 | 150 | 3:00 |
| 92.1 | 150 | 9:00 |
| 103.9 | 150 | 2:00 |
| 103.9 | 150 | 10:00 |
| 104.0 | 150 | 11:00 |
| 118.7 | 150 | 2:00 |
| 118.7 | 150 | 10:00 |
| 134.6 | 150 | 2:00 |
| 134.6 | 150 | 10:00 |
| 135.0 | 150 | 11:00 |
| 146.2 | 150 | 1:00 |
| 149.1 | 150 | 11:00 |
| 150.6 | 150 | 1:00 |
| 165.5 | 150 | 3:00 |
| 165.5 | 150 | 9:00 |

SEWER REHABILITATION NOTES (S-MA60009676):

- CIPP OR GRP LINING MAY BE USED
- EXISTING SEWER DETERIORATION STATE: PARTIALLY DETERIORATED
- GRP LINING: INSTALL LINER SYSTEM THROUGH MANHOLE S-MH60008097 TO PROVIDE A CONTINUOUS LINER BETWEEN S-MA60009676 AND S-MA70014425. REINSTATE MANHOLE ACCESS AT S-MH60008097.
- CIPP LINING: TERMINATE CIPP LINERS AT MANHOLE INTERFACE AS PER DETAIL 3 ON DWG. 13639
- SEE PIPELINE CLOSURE AND MANHOLE RECONSTRUCTION DETAILS ON DWG 13638.

FOR INDEX SEE
13633

TENDER NO. 741-2025

**ENGINEERS
GEOSCIENTISTS
MANITOBA**
Certificate of Authorization
Stantec Consulting Ltd.
No. 1301



METRIC

WHOLE NUMBERS INDICATE MILLIMETRES
DECIMALIZED NUMBERS INDICATE METRES

WARNING

IF POWER EQUIPMENT OR EXPLOSIVES ARE TO BE USED FOR EXCAVATION ON THIS PROJECT THE CONTRACTOR MUST:
1) NOTIFY THE GAS COMPANY OF THE PROPOSED LOCATION OF EXCAVATION.
2) TAKE PRECAUTION TO AVOID DAMAGE TO GAS COMPANY INSTALLATIONS.
SEE PROVINCIAL REGULATION 140/92 FOR DETAILS

LOCATION APPROVED
UNDERGROUND STRUCTURES

SUPV. U/G STRUCTURES COMMITTEE DATE

NOTE:

LOCATION OF UNDERGROUND STRUCTURES AS SHOWN ARE BASED ON THE BEST INFORMATION AVAILABLE BUT NO GUARANTEE IS GIVEN THAT ALL EXISTING UTILITIES ARE SHOWN OR THAT THE GIVEN LOCATIONS ARE EXACT. CONFIRMATION OF EXISTENCE AND EXACT LOCATION OF ALL SERVICES MUST BE OBTAINED FROM THE INDIVIDUAL UTILITIES BEFORE PROCEEDING WITH CONSTRUCTION.

B.M.
ELEV.

| | | | |
|-----|-------------------------|----------|-----|
| | | | |
| | | | |
| | | | |
| | | | |
| | | | |
| 00 | ISSUED FOR CONSTRUCTION | 25.10.29 | NJK |
| NO. | REVISIONS | DATE | BY |



Stantec

311 Portage Avenue, Winnipeg, Manitoba
Tel 204-489-5900 Fax 204-453-9012

DESIGNED BY NJK

CHECKED BY ADB

DRAWN BY MR

APPROVED BY ADB

HOR. SCALE: 1:750
VERTICAL:

RELEASED FOR CONSTRUCTION: STACY COURNOYER, P. ENG

DATE 25.01.16

DATE 25.10.15



CONSULTANT DRAWING NO.
C-102



THE CITY OF WINNIPEG
WATER AND WASTE DEPARTMENT

2024 TRENCHLESS REHABILITATION OF NON-CIRCULAR COMBINED SEWERS

CONTRACT 4

"SITE 2" JESSIE AVENUE

MANHOLE AT WENTWORTH STREET TO
MANHOLE AT LILAC STREET

SHEET OF
04 08

CAD FILE DRAWING NUMBER
00066c-101.dwg

CITY DRAWING NUMBER
13635