

\\CA0050-PPFSS01\shared_projects\133600066\09. CAD\07 Sheets\02_civil\00066c-104.dwg

NOTE:
THIS SITE IS A DESIGNATED
RIGHT-OF-WAY OWNED BY
THE PROVINCE OF MANITOBA.
STORAGE OR STAGING OF
MATERIALS WITHIN 107
METERS OF REGULATED
SUMMER RIVER LEVELS IS
NOT PERMITTED. THE
CONTRACTOR SHALL APPLY
FOR A WATERWAYS PERMIT
FOR TEMPORARY
CONSTRUCTION PROVISIONS
PRIOR TO CONSTRUCTION.

S-MH20004695
MH IS PIPED THROUGH
AND NOT AVAILABLE FOR
BYPASS DISCHARGE.
RIM 236.07
INV E 233.90
INV W 233.84

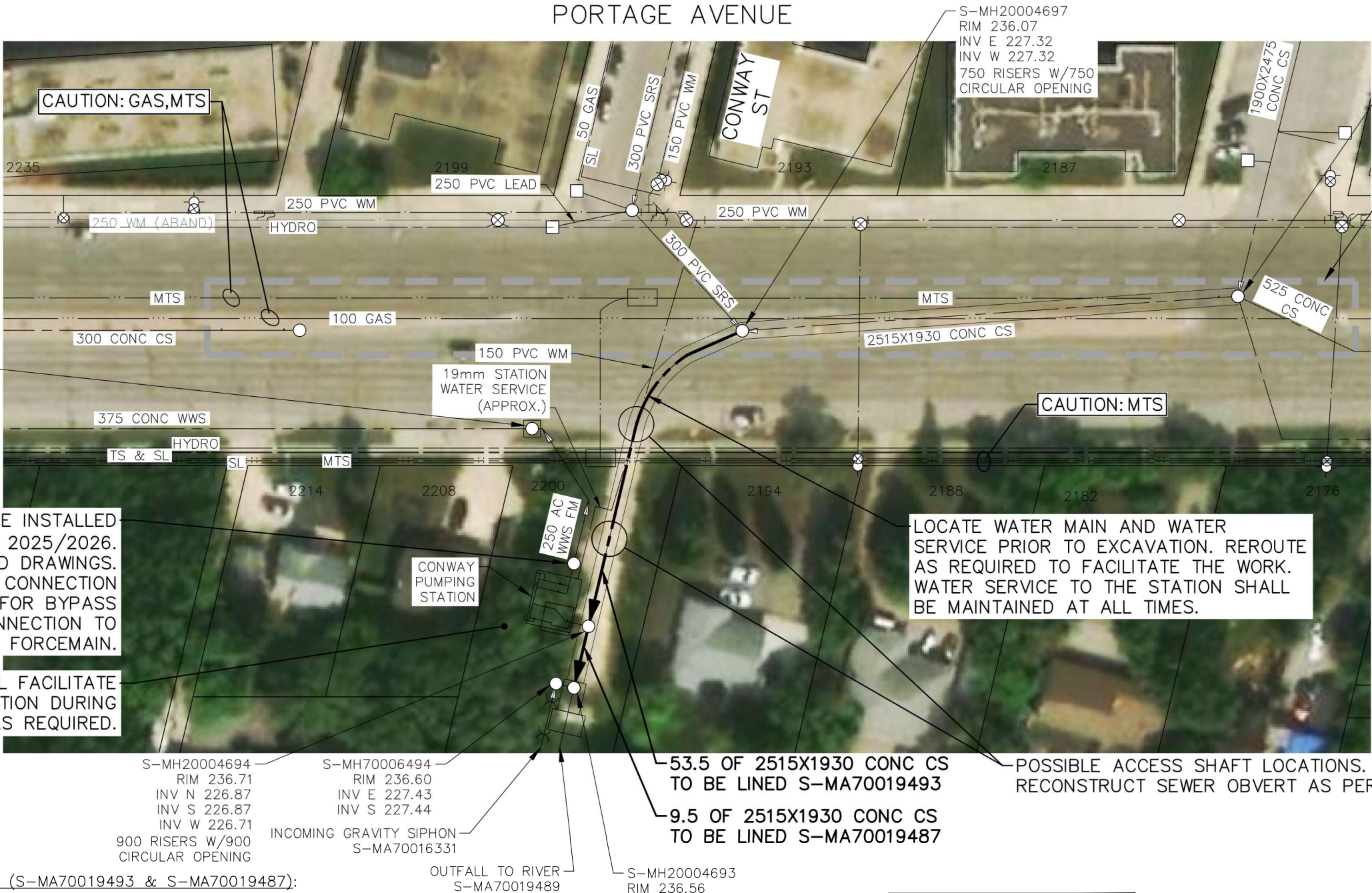
NEW BYPASS MH TO BE INSTALLED
DURING STATION WORK IN 2025/2026.
REFER TO RECORD DRAWINGS.
EXISTING 250 FLANGED CONNECTION
MAY BE UTILIZED FOR BYPASS
PUMPING DISCHARGE CONNECTION TO
EXISTING FORCEMAIN.

CONTRACTOR SHALL FACILITATE
ACCESS TO THE STATION DURING
CONSTRUCTION AS REQUIRED.

SEWER REHABILITATION NOTES (S-MA70019493 & S-MA70019487):

- GRP LINING TO BE USED
- EXISTING SEWER DETERIORATION STATE: PARTIALLY DETERIORATED – EXTENSIVE INVERT DETERIORATION NOTED THROUGHOUT BOTH ASSETS
- INSTALL LINER SYSTEM THROUGH MANHOLE S-MH20004694 TO PROVIDE A CONTINUOUS LINER BETWEEN S-MH20004697 & S-MH20004693. REINSTATE ACCESS AT S-MH20004694.
- INSTRUMENTATION AND CABLING BETWEEN S-MH20004693 & DOWNSTREAM OF S-MH20004694 TO BE TEMPORARILY REMOVED AND REINSTATED AFTER LINING.
- SEE PIPELINE CLOSURE AND MANHOLE RECONSTRUCTION DETAILS ON DWG 13638.

PORTAGE AVENUE



S-MH20004685
RIM 235.28
INV N 227.16
INV E 227.90
INV S 227.16
INV W 227.16

EASTBOUND AND WESTBOUND
MEDIAN LANES MAY BE USED FOR
LAYDOWN AREA.
MAINTAIN MIN 2 LANES OF TRAFFIC
IN EACH DIRECTION AT ALL TIMES

SEWER JUNCTION INFORMATION FROM SEWER VIDEO INSPECTION		
SEWER ID S-MA70019493		
DISTANCE FROM MH ID S-MH20004694		
DISTANCE	DIAMETER	CLOCK
42.5	150	12:00
44.3	150	12:00

SEWER JUNCTION INFORMATION FROM SEWER VIDEO INSPECTION		
SEWER ID S-MAS-MA70019487		
DISTANCE FROM MH ID S-MH20004693		
DISTANCE	DIAMETER	CLOCK
NO SERVICE JUNCTIONS		

LOCATE WATER MAIN AND WATER
SERVICE PRIOR TO EXCAVATION. REROUTE
AS REQUIRED TO FACILITATE THE WORK.
WATER SERVICE TO THE STATION SHALL
BE MAINTAINED AT ALL TIMES.

CAUTION: MTS

CAUTION: GAS, MTS

S-MH20004694
RIM 236.71
INV N 226.87
INV S 226.87
INV W 226.71
900 RISERS W/900
CIRCULAR OPENING

S-MH70006494
RIM 236.60
INV E 227.43
INV S 227.44
INCOMING GRAVITY SIPHON
S-MA70016331

OUTFALL TO RIVER
S-MA70019489

53.5 OF 2515X1930 CONC CS
TO BE LINED S-MA70019493
9.5 OF 2515X1930 CONC CS
TO BE LINED S-MA70019487

S-MH20004693
RIM 236.56
INV N 227.32
INV S 226.65
INV W 227.41
WEIR 227.41

POSSIBLE ACCESS SHAFT LOCATIONS.
RECONSTRUCT SEWER OBVERT AS PER DETAILS.



METRIC

WHOLE NUMBERS INDICATE MILLIMETRES
DECIMALIZED NUMBERS INDICATE METRES

WARNING

IF POWER EQUIPMENT OR EXPLOSIVES ARE TO BE USED
FOR EXCAVATION ON THIS PROJECT THE CONTRACTOR
MUST:
1) NOTIFY THE GAS COMPANY OF THE PROPOSED LOCATION
OF EXCAVATION.
2) TAKE PRECAUTION TO AVOID DAMAGE TO GAS COMPANY
INSTALLATIONS.
SEE PROVINCIAL REGULATION 140/92 FOR DETAILS

LOCATION APPROVED
UNDERGROUND STRUCTURES

SUPV. U/G STRUCTURES DATE
COMMITTEE

NOTE:
LOCATION OF UNDERGROUND STRUCTURES AS
SHOWN ARE BASED ON THE BEST INFORMATION
AVAILABLE BUT NO GUARANTEE IS GIVEN
THAT ALL EXISTING UTILITIES ARE SHOWN OR
THAT THE GIVEN LOCATIONS ARE EXACT.
CONFIRMATION OF EXISTENCE AND EXACT
LOCATION OF ALL SERVICES MUST BE
OBTAINED FROM THE INDIVIDUAL UTILITIES
BEFORE PROCEEDING WITH CONSTRUCTION.

B.M. ELEV.			
00	ISSUED FOR CONSTRUCTION	25.10.29	NJK
NO.	REVISIONS	DATE	BY

311 Portage Avenue, Winnipeg, Manitoba
Tel 204-489-5900 Fax 204-453-9012

DESIGNED BY	NJK	CHECKED BY	ADB
DRAWN BY	MR	APPROVED BY	ADB
HOR. SCALE:	1:750	RELEASED FOR CONSTRUCTION:	STACY COURNOYER, P. ENG
VERTICAL:		DATE	25.10.15
DATE	25.01.16	CONSULTANT DRAWING NO.	C-104

ENGINEER'S SEAL
PROVINCE OF MANITOBA
N. J.
KEHLER
Member
30100
REGISTERED PROFESSIONAL ENGINEER
2025-11-03

CONSULTANT DRAWING NO.
C-104

THE CITY OF WINNIPEG
WATER AND WASTE DEPARTMENT

2024 TRENCHLESS REHABILITATION OF NON-CIRCULAR COMBINED SEWERS
CONTRACT 4
"SITE 4" PORTAGE AVENUE
MANHOLE AT CONWAY STREET (E OF CL) TO
2ND MANHOLE S OF PORTAGE AVENUE (CL)

SHEET OF
06 08
CAD FILE DRAWING NUMBER
00066c-104.dwg
CITY DRAWING NUMBER
13637